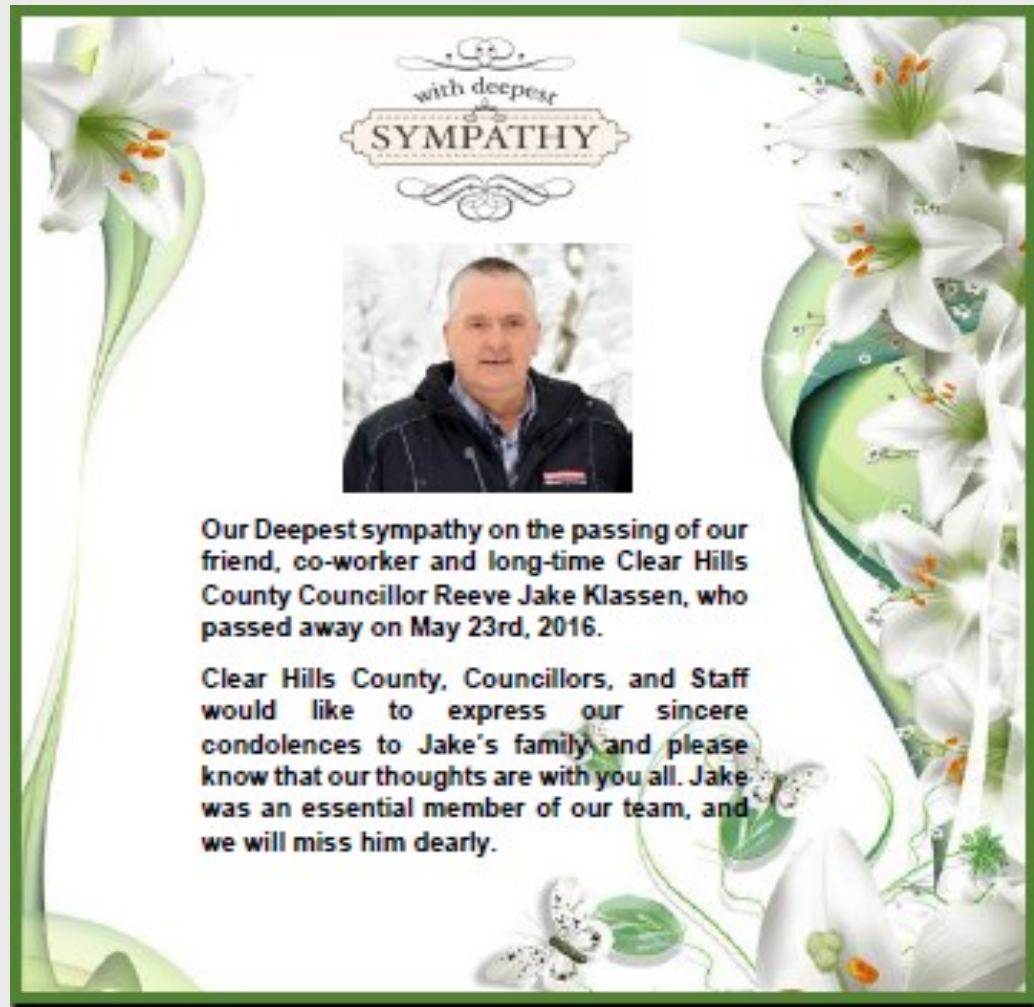


# Clear Hills County


C L E A R L Y   A N   A R E A   O F   O P P O R T U N I T Y

## INSIDE THIS ISSUE:

Council Minutes	2
Stars of Alberta	9
Protecting Seniors	10
2016 Inspiration Awards	12
Fire Fighter Awards	14
Worsley Pioneer Days	15
Save the Date!	16
2016 Census	17
Japanese Knotweed	18
Worsley Health Center	20
Community Bulletin	21
Community Contacts	22
Community Calendar	23
County Info	24

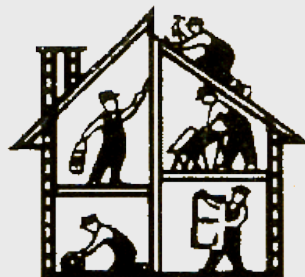


with deepest  
**SYMPATHY**



**Our Deepest sympathy on the passing of our friend, co-worker and long-time Clear Hills County Councillor Reeve Jake Klassen, who passed away on May 23rd, 2016.**

**Clear Hills County, Councillors, and Staff would like to express our sincere condolences to Jake's family and please know that our thoughts are with you all. Jake was an essential member of our team, and we will miss him dearly.**



### Did you know?

All residential development requires a development permit. If you are planning new development, or have development questions, please contact the County's Development Officer.

**MINUTES OF CLEAR HILLS COUNTY  
SPECIAL COUNCIL MEETING  
COUNTY COUNCIL CHAMBERS  
June 24, 2016**

<b>PRESENT</b>	<p>Jason Ruecker Charlie Johnson Miron Croy Dan Fletcher Lee Svederus Peter Frixel</p>	<p>Deputy Reeve Councillor Councillor Councillor Councillor Councillor</p>
<b>ABSENT</b>		
<b>ATTENDING</b>	<p>Allan Rowe Audrey Bjorklund Ron Jensen Bonnie Morgan</p>	<p>Chief Administrative Officer (CAO) Community Development Manager (CDM) Public Works Manager (PWM) Executive Assistant (EA)</p>
<b>CALL TO ORDER</b>	Deputy Reeve Ruecker called the meeting to order at 9:30 a.m.	
<b><u>ACCEPTANCE OF AGENDA</u></b> C361-16(06/14/16)	RESOLUTION by Councillor Croy adopt the agenda governing June 24, 2016, Special Council Meeting, as presented. CARRIED.	
<b><u>DELEGATION:</u></b> MLA, Honorable Margaret McCuaig-Boyd, Dunvegan Central Peace-Notley	<p>MLA, Honorable Margaret McCuaig-Boyd, Dunvegan Central Peace-Notley will be in attendance at 10:00 a.m. to have a general discussion regarding pertinent items.</p> <p>Deputy Reeve Ruecker recessed the meeting at 11:03 a.m. Deputy Reeve Ruecker reconvened the meeting at 11:15 a.m.</p>	
<b>C362-16(06/14/16)</b>	RESOLUTION by Councillor Fletcher to receive the delegation from MLA, Honorable Margaret McCuaig-Boyd, Dunvegan Central Peace-Notley for information and bring back the requested Minister meetings for the 2016 Fall AAMDC Convention to the July 19, 2016 Regular Council meeting. CARRIED.	
<b><u>NEW BUSINESS:</u></b> <b><u>COUNCIL</u></b> Draft Land Use Bylaw	Council requested a discussion regarding the draft Land Use Bylaw.	
<b>C363-16(06/14/16)</b>	RESOLUTION by Councillor Frixel to bring back the discussion regarding the draft Land Use Bylaw to Tuesday, June 28, 2016 Regular Council Meeting. CARRIED.	

**SPECIAL COUNCIL MEETING      Page 2 of 2**  
**FRIDAY, JUNE 24 2016**

**ADJOURNMENT**

Deputy Reeve Ruecker adjourned the June 24, 2016, Regular Council Meeting at 11:49 a.m.

\_\_\_\_\_  
 DATE

\_\_\_\_\_  
 REEVE

\_\_\_\_\_  
 DATE

\_\_\_\_\_  
 CHIEF ADMINISTRATIVE OFFICER



**Fairview & Area Seniors Check In Line**

**Pilot Project for Seniors**

We are a group of local residents who have formed a Non Profit Society operating in Fairview & Area with the goal to support the lives of local seniors.

The objective of this program is to enable seniors to live independently with the security of knowing someone local is available for daily telephone contact. If you or someone you know is interested in this service please contact the following people for more information.

Connie @ 780-835-8873

Kathleen @ 780-835-2476

Betty @ 780-835-3859



**S U M M E R   D R I V E W A Y**

Clear Hills County provides Summer Driveway Grading for Senior Citizens, once per season, during the summer months. To sign up, you must be 65 years of age, sign a waiver and provide proof of age. For more information or to request a form please contact the Public Works Department at Clear Hills County office at 780-685-3825.

**MINUTES OF CLEAR HILLS COUNTY  
REGULAR COUNCIL MEETING  
COUNTY COUNCIL CHAMBERS  
June 28, 2016**

<b>PRESENT</b>	Jason Ruecker Charlie Johnson Miron Croy Dan Fletcher Lee Svederus Peter Frixel	Deputy Reeve Councillor Councillor Councillor Councillor Councillor
<b>ABSENT</b>		
<b>ATTENDING</b>	Allan Rowe Audrey Bjorklund Bonnie Morgan	Chief Administrative Officer (CAO) Community Development Manager (CDM) Executive Assistant (EA)
<b>CALL TO ORDER</b>	Deputy Reeve Ruecker called the meeting to order at 9:30 a.m.	
<u><b>ACCEPTANCE OF AGENDA</b></u> C364-16(06/28/16)	<b>RESOLUTION</b> by Councillor Svederus to adopt the agenda governing June 28, 2016, Regular Council Meeting, with the following addition 7.a.2. Land Use Bylaw amendments. <b>CARRIED.</b>	
<u><b>APPROVAL OF MINUTES</b></u> Previous Meeting Minutes		
C365-16(06/28/16)	<b>RESOLUTION</b> by Councillor Croy to adopt the minutes of June 14, 2016, Regular Council Meeting, as presented. <b>CARRIED.</b>	
<u><b>NEW BUSINESS: COUNCIL Management Team Activity Report</b></u>	Council reviewed the most recent Management Team Activity Report.	
C366-16(06/28/16)	<b>RESOLUTION</b> by Councillor Fletcher to accept the June 14, 2016, Management Team Activity Report, as presented. <b>CARRIED.</b>	
Land Use Bylaw Amendments	Following up on the delegation with the NRCB at the June 14th meeting, and the follow-up discussion on CFO setbacks from water ways and residences at the June 24th special meeting Council requested that this item be brought back to the table for further consideration.	
C367-16(06/28/16)	<b>RESOLUTION</b> by Councillor Johnson to table the Land Use Bylaw amendments until later in the meeting. <b>CARRIED.</b>	
	Deputy Reeve Ruecker recessed the meeting to allow for the Public hearing for Bylaw 206-16 and Bylaw 207-16 at 10:00 a.m.	

REGULAR COUNCIL MEETING Page 2 of 6  
 TUESDAY, JUNE 28, 2016  
 Deputy Reeve Ruecker reconvened the meeting at 10:03 a.m.

CORPORATE  
 SERVICES

Accounts Payable  
 (June 15, 2016, to  
 June 28, 2016)

A list of expenditures for Clear Hills County for the period of June 1, 2016, to June 31, 2016, is provided for Council's review.

C368-16(06/28/16)

RESOLUTION by Councillor Croy that Council receives for information the Accounts Payable report for Clear Hills County for the period of June 15, 2016 to June 28, 2016 for a total of \$1,103,285.95 (one million one hundred and three thousand two hundred and eighty five dollars and ninety five cents). CARRIED.

DELEGATION:  
 Fairview Day Care &  
 Playschool Society

Representatives of the Fairview Day Care & Playschool Society will be in attendance at 10:15 a.m. to present their plans for securing a new facility to house the day care and funding request.

Deputy Reeve Ruecker recessed the meeting at 10:33 a.m.  
 Deputy Reeve Ruecker reconvened the meeting at 10:41 a.m.

Worsley Early  
 Childhood Education  
 Foundation

Worsley Early Childhood Education Foundation representatives will be in attendance at 10:30 a.m. to review the 2015 Worsley preschool program that received Family and Community Support Services (FCSS) funding, and to present the 2016 program for FCSS funding consideration.

Peace River School  
 Division

Representatives of the Peace River School Division will be in attendance at 10:45 a.m. to review the 2015 Student Councillor program that received Family and Community Support Services (FCSS) funding, and to present the 2016 program for FCSS funding consideration.

C369-16(06/28/16)

RESOLUTION by Councillor Fletcher to accept delegation from Danielle Gadruck and Nicole Peppler from the Fairview Day Care & Playschool Society for the construction of a new facility, for information and approve funding of \$150,000.00 (one hundred and fifty thousand dollars) in the form of a grant with funds to be allocated from the rate stabilization reserve. CARRIED.

C370-16(06/28/16)

RESOLUTION by Councillor Svederus to accept for information the Worsley Early Childhood Education Foundation delegation that provided a review of their 2015 program that received Family & Community Support Services funding from the county and their proposed 2016 program. CARRIED.

## REGULAR COUNCIL MEETING Page 3 of 8

TUESDAY, JUNE 28, 2016

C371-16(06/28/16)

RESOLUTION by Councillor Croy to accept for information the Peace River School Division delegation that provided a review of their 2015 program that received Family & Community Support Services funding from the county and their proposed 2016 program. CARRIED.

Deputy Reeve Ruecker recessed the meeting at 11:30 a.m.

Deputy Reeve Ruecker reconvened the meeting at 12:03 p.m.

COMMUNITY  
SERVICES

FCSS

Five applications have been received for the Family and Community Support Services (FCSS) Grant and are presented for Council's consideration.

C372-16(06/28/16)

RESOLUTION by Councillor Johnson to approve disbursement of the 2016 FCSS grant to applicants as follows: additional funds to be allocated from the Rate Stabilization Reserve

Youth Enhancement Society – Y.E.S. program	\$45,000.00
Jeanne Lawrence – Mommy and Me	\$8,000.00
Worsley Early Childhood Education Foundation	\$16,000.00
Peace River School Division – Youth Support Worker	\$65,00.00
Hines Creek Playschool Society	\$10,000.00
Total	\$144,000
	CARRIED.

C373-16(06/28/16)

RESOLUTION by Councillor Croy to raise the Land Use Bylaw amendment discussion off the table. CARRIED.

C374-16(06/28/16)

RESOLUTION by Councillor Frixel to direct amendments as presented to 9.4 (8) of the Land Use Bylaw changing the wording of (f)(ii) "Grimshaw Gravel Aquifer and any identified aquifers within the County". CARRIED.

C375-16(06/28/16)

RESOLUTION by Councillor Croy to accept for information that all private Sewage systems must comply with Alberta Standards of Practice. CARRIED.

C376-16(06/28/16)

RESOLUTION by Councillor Frixel to accept for information the discussion regarding wetlands. CARRIED.

Public Hearing  
Advertising Costs

Council is provided with a report on public hearing advertising costs for the two public hearings being held today for information; as this is the first time the blanket advertising for a bylaw amendment affecting the entire County has been triggered, and also the first time for notification by registered mail to landowners within a 5 miles radius of a property being rezoned.

	REGULAR COUNCIL MEETING Page 4 of 8 TUESDAY, JUNE 28, 2016
C377-16(06/28/16)	RESOLUTION by Deputy Reeve Ruecker to accept for information the Public Hearing Advertising Cost report, as presented. CARRIED.
Land Use Bylaw Amendment-Bylaw 206-16	Council is presented with Bylaw 206-16 to amend Land Use Bylaw 107-08 by repealing Bylaw 202-16 that rezoned a portion of NW 17-85-5-W6M from "Agricultural District 1 (AG-1)" to "Rural Industrial District (R-M)".
C378-16(06/28/16)	RESOLUTION by Councillor Fletcher to give second reading to Bylaw 206-16 a Bylaw to repeal Bylaw 202-16, including the attached Schedule A, thereby rezoning a 4.05 hectare (10 Acre) parcel of NW 17-85-5-W6M back to "Agricultural District-1 (AG-1)" from "Rural Industrial (R-M)". CARRIED.
C379-16(06/28/16)	RESOLUTION by Councillor Svederus to give third and final reading to Bylaw 206-16 a Bylaw to repeal Bylaw 202-16, including the attached Schedule A, thereby rezoning a 4.05 hectare (10 Acre) parcel of NW 17-85-5-W6M back to "Agricultural District-1 (AG-1)" from "Rural Industrial (R-M)". CARRIED.
Land Use Bylaw Amendment-Bylaw 207-16	Council is presented with Bylaw 207-16 to amend Land Use Bylaw 107-08 with additional advertising procedures for land use bylaw amendments.
C380-16(06/28/16)	RESOLUTION by Councillor Johnson to gives second reading to Bylaw 207-16 to amend Land Use Bylaw 107-08 with additional advertising procedures for land use bylaw amendments. CARRIED.
C381-16(06/28/16)	RESOLUTION by Councillor Croy to gives third and final reading to Bylaw 207-16 to amend Land Use Bylaw 107-08 with additional advertising procedures for land use bylaw amendments. CARRIED.
Emergencies and Communication Options	Following up on feedback from the public on the lack of public information on the wildfire that crossed from BC into Alberta Council directed staff to look into public communication options for future emergency events. Options are provided for Council's consideration.
C382-16(06/28/16)	RESOLUTION by Councillor Croy to bring back opportunities to update the County Website on Emergency situations, to a future Council Meeting. CARRIED.
Rotary House Funding Request	On behalf of the Rotary House, the Town of Peace River is requesting a contribution of \$200,000 for the Rotary House project that is will be

## REGULAR COUNCIL MEETING Page 5 of 8

TUESDAY, JUNE 28, 2016

built adjacent to the Peace River Community Health Centre. The Rotary house is modelled after the "Sorrentino's Compassion House" and the "Ronald MacDonald House" where patients (and family) are able to access living accommodations while receiving medical treatments.

C383-16(06/28/16)

RESOLUTION by Councillor Johnson to not approve the request of \$200,000 for the Rotary House project in Peace River, AB.  
CARRIED.

PUBLIC WORKS

Proceed to Tender  
Sidewalk Repairs

Council to proceed to tender the repair and/or replacement of the sidewalks in the Hamlet of Worsley and around the County administration building.

C384-16(06/28/16)

RESOLUTION by Councillor Fletcher to proceed to tender for the repair and/or replacement of the sidewalks in the Hamlet of Worsley and around the County administration building.  
CARRIED.

WRITTEN REPORTS

COUNCIL  
COMMITTEE &  
MANAGERS

Council Reports

Council submits the meetings attended in the previous month and a report, if applicable.

C385-16(06/28/16)

RESOLUTION by Councillor Johnson to have the process that the Government implements for new legislation added to the Zone 4 Reeve and CAO meeting on June 30, 2016. CARRIED.

Chief Administrative  
Officer's Report

The Chief Administrative Officer report was reviewed.

C386-16(06/28/16)

RESOLUTION by Councillor Croy to receive the information provided in the Chief Administrative Officer report for June 28, 2016, for information, as presented. CARRIED.

Community  
Development  
Manager's Report

There was nothing to report.

Corporate Service  
Manager's Report

There was nothing to report.

Public Works  
Manager's Report

The Public Works Managers report was reviewed.

C387-16(06/28/16)

RESOLUTION by Deputy Reeve Ruecker to receive the information provided in the Public Works Managers report for June 28, 2016, for information, as presented. CARRIED.

REGULAR COUNCIL MEETING Page 6 of 6  
TUESDAY, JUNE 28, 2016

COUNCIL  
INFORMATION

Council was presented with the correspondence of pertinent information that has been received.

C388-16(06/28/16)

RESOLUTION by Councillor Fletcher to receive for information the correspondence presented at the June 28, 2016 Regular Council Meeting. **CARRIED.**

CALENDARS

Council and Administration reviewed the upcoming months' calendars for Councillor Boards and Committee scheduled meetings, to assist Administration with record keeping and Council with a reminder.

C389-16(06/28/16)

RESOLUTION by Councillor Croy to receive for information the, June, July and August 2016, calendars, as presented.

Meeting	Date	Member
PRED A	Sept 1 & 2	Frixel
		<b>CARRIED.</b>

ADJOURNMENT

Deputy Reeve Ruecker adjourned the June 28, 2016, Regular Council Meeting at 1:28 p.m.

\_\_\_\_\_  
DATE

\_\_\_\_\_  
REEVE

\_\_\_\_\_  
DATE

\_\_\_\_\_  
CHIEF ADMINISTRATIVE OFFICER

## ***Stars of Alberta Volunteer Awards 2016***

The search is on for Alberta's outstanding volunteers as nominations for the Stars of Alberta Volunteer Awards are now open. From students to seniors, volunteers are the backbone of our communities and you can help to recognize their selfless generosity.

Think about those remarkable people who are making a difference in your community through their volunteer service. Now consider their names forward for the 2016 Stars of Alberta Volunteer Awards.

Six awards, two each for youth, adult and seniors are presented annually on December 5 International Volunteer Day.

Deadline for the Stars of Alberta Volunteer Awards 2016 is September 20, 2016.

For more information please visit: [www.culture.alberta.ca/voluntarysector/stars](http://www.culture.alberta.ca/voluntarysector/stars)

# Protecting seniors from financial abuse and investment fraud



## THE FACTS:

- Ⓢ According to the Alberta government, financial abuse is one of the most frequently reported forms of elder abuse in Alberta<sup>1</sup>.
- Ⓢ The issue of financial abuse among elders is expected to get worse as Alberta's population continues to age. As of March 2011, there were about 410,000 seniors in Alberta. By 2031, when the last of the baby boomers reach 85 years of age, it is projected that there will be more than 823,000 seniors – meaning approximately one in five Albertans will be a senior<sup>2</sup>.
- Ⓢ Among Albertans who reported that they were approached with investment fraud, the highest number of incidences occurred among males 55+<sup>3</sup>.
- Ⓢ As a person ages, changes in their ability to make important decisions and difficulties with memory loss can increase their vulnerability and exposure to financial exploitation. They are more likely to be taken advantage of and approached with investments that are unsuitable for their circumstances.
- Ⓢ Financial loss for seniors is magnified because they generally don't have the means or time to recover from their losses.



## COMMON TYPES OF SCAMS TARGETED AT SENIORS:

**Affinity fraud:** A fraudulent opportunity is introduced by a family member, friend or a member of a community organization (such as a church or a curling club) and exploits the trust built in these types of relationships by exposing seniors to fraudulent investment opportunities.

**Online advertising:** Online ads are designed to lure seniors in, with promises of "easy money" and "high return, low risk" investments. Pop-up ads appear on various websites that seniors may visit, such as lottery and investing sites and social media sites such as Facebook. Clicking on the ad will lead to the fraudster's website, which contains more misleading information on their company and/or investment opportunity. Contact information is provided, and once seniors engage in conversation with a company representative is when they risk losing their money to a scam.

**Cold calls:** Persistent sales people use aggressive sales tactics over the phone to pitch genuine-sounding investment opportunities.

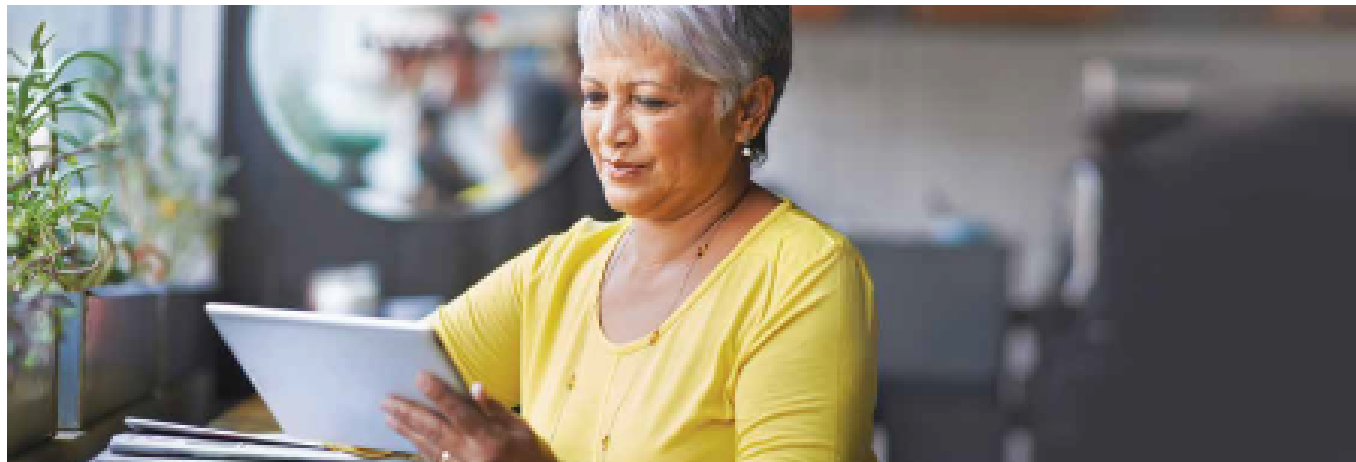
**Investment seminars:** Seniors are lured into an educational seminar, which often includes a free lunch or coffee. The seminars are usually sales pitches for "exciting" and "lucrative" investment opportunities. Seniors often feel obligated and pressured to invest because they have accepted the lunch or coffee.

**Charity scams:** Scam artists will take advantage of seniors' generosity by convincing them to donate their money to a non-existent charity or for a cause that could be related to a current event, such as a fire or a flood.



1. Source: [www.seniors.alberta.ca/seniors/elder-abuse.html](http://www.seniors.alberta.ca/seniors/elder-abuse.html)  
 2. Source: <http://www.seniors.alberta.ca/seniors/aging-population.html>  
 3. Source: ASC 2016 Alberta Investors Study

## PROTECTING SENIORS FROM FINANCIAL ABUSE AND INVESTMENT FRAUD



## SIGNS THAT A SENIOR MAY BE AT RISK:

- ⊕ They become socially isolated, depressed or lonely. Fraudsters will often develop relationships with their victims and prey on their need for conversation.
- ⊕ They mention the name of someone more frequently, a new friend or a family member that they were previously not close with.
- ⊕ They complain about being short on money or have suddenly become secretive or defensive about their finances. Unopened mail, especially bills and invoices start to pile up.
- ⊕ They complain that they cannot get in touch with the adviser or broker they have investments with and have trouble remembering the details of their investments.
- ⊕ Care of their home and personal hygiene has declined, which may be a sign that they cannot independently handle their finances anymore.



## IF YOU BELIEVE A SENIOR MIGHT BE AT RISK:

- + **Be proactive.** Engage the senior in conversations about money. Seniors who discuss their finances are more likely to take preventative measures against financial abuse.
- + **Bring up the topic in a calm, casual way, don't lecture.** Ask them for their opinion on what they would do if they were in a similar situation. Emphasize a news article on the topic and/or share a friend's experience. Explain how the incident had an impact on others and that it is important to speak up and report fraud if it happens to them.
- + **Listen and be empathetic.** Seniors are often embarrassed once they realize they have fallen victim to investment fraud. Many seniors also fear that their independence will be taken away if they speak up. If they are a victim of affinity fraud, it can be much more difficult for them to speak up against someone they know and trusted.
- + **Keep close tabs on their social circles.** Have they acquired any questionable new friends lately, or are they seeing anyone who's giving them advice, financial or otherwise?
- + **Speak up and report it.** Contact the ASC ([inquiries@asc.ca](mailto:inquiries@asc.ca) or 1-877-355-4488) if you suspect that a senior in your life may be a victim of investment fraud. We offer free, unbiased information to help Albertans recognize and avoid investment fraud. Reporting helps to protect other investors from becoming victims.

## 2016 Inspiration Awards—Call for Nomination!

### ***Nominations are now open for the 5th Annual Inspiration Awards.***

Join us in celebrating the contributions and achievements of Albertans who demonstrate leadership in family and community safety.

### ***Nominate someone today!***

Do you know someone who has made a difference in preventing family violence or building healthy relationships, and deserves to be recognized?

Please take the time to nominate a friend, co-worker, client, employee, business or employer whose accomplishments should be acknowledged. We look forward to sharing their inspirational stories.

We are accepting nominations, in the following categories, to those showing leadership in preventing and/or responding to:

- Family Violence
- Sexual Abuse
- Child Abuse
- Bullying

Two additional awards also given out are:

- Emergency excellence (recognizing people 24 years of age and younger); and
- Lifetime Achievement award

We will be celebrating the achievements of these inspiring Albertans during the 30th Anniversary of Family Violence Prevention Month this November in Edmonton.

Nomination packages are available online [humanservices.alberta.ca/inspirationawards](http://humanservices.alberta.ca/inspirationawards) or by calling Alberta Human Services at 780-422-5916 (accessed toll-free in Alberta by first dialling 310-0000).

**Deadline for 2016 nominations is 4:00 p.m., Friday, September 16, 2016.**



**CALL FOR  
NOMINATIONS**

# **INSPIRATION AWARDS**

**Leadership in Family and Community Safety**

Building healthy relationships and preventing family violence, sexual violence, child sexual abuse and bullying

**DEADLINE FOR NOMINATIONS**  
**4 p.m. on Friday, September 16, 2016**

Nomination packages:

[humanservices.alberta.ca/inspirationawards](http://humanservices.alberta.ca/inspirationawards)

780.422.5916 (toll-free in Alberta by first dialing 310.0000)

*Alberta* 

Congratulations to the Hines Creek and Worsley Volunteer Fire Fighters Long Service Award recipients and thank you to all the Volunteer Fire Fighters for your dedication and commitment to our community!

30 Years	Ernie Brauer	Hines Creek Fire Department
12 Years	Paul Heasley	Hines Creek Fire Department
9 Years	Lynn Muters	Hines Creek Fire Department
6 Years	Richard Carleton	Worsley Fire Department
6 Years	Miguel Cordeiro	Worsley Fire Department
6 Years	Frank Peters	Worsley Fire Department
3 Years	Amos Driedger	Worsley Fire Department
3 Years	Benjamin Peters	Worsley Fire Department
3 Years	Abraham Zacharias	Worsley Fire Department
3 Years	George Clutton	Hines Creek Fire Department
3 Years	Bradley Gross	Hines Creek Fire Department
3 Years	Corey Gross	Hines Creek Fire Department
3 Years	Markus Gross	Hines Creek Fire Department

### TENDER PACKAGES

Clear Hills County will have tender packages available for pickup at 9:00 a.m. Thursday, August 4, 2016 for the following:

1. Sidewalk repair and replacement within the Hamlet of Worsley and the Clear Hills County Administration Building.
2. Roof replacement for the old Fire Hall Building.

Please see details in the August 3rd & 10th edition of the Fairview Post.



## HERITAGE DAY IN ALBERTA

In 1974 the Alberta Government declared the first Monday of August an annual holiday to recognize and celebrate the varied cultural heritage of Albertans.

Alberta's Heritage Day must not be confused with Family Day, which falls on the third Monday of February in parts of Canada such as Alberta, Ontario and Saskatchewan. The Yukon also celebrates Heritage Day. The Heritage Canada Foundation also refers to Family Day as Heritage Day,

which it established in 1973. It has long advocated adopting the third Monday of February as a national holiday.

Canadians use the long weekend to go on out-of-town trips to spend time with family and friends. Activities include camping trips, hiking tours or quiet retreats. Many families and tourists plan to visit museums such as Fort Calgary, which celebrates Alberta's Heritage Day with interpretive tours, movies, crafts, face paintings, a treas-

ure hunt and genealogy presentations.

Heritage Day is an optional holiday in Alberta. This means that businesses can choose whether or not to recognize the day as a general holiday. Museums may be open with special activities focused around the event.



# Worsley Pioneer Days

## August 13, 2016

### Parade at Noon

Line Up at Barn at 11:00 am

Judging at 11:30 am

Prizes for: ~Best Kid's Bike

~ Business Float

~ Antique Float

### Afternoon of Fun Activities

Potluck Supper

Threshing

Bingo

Kid's Games

Bannock Making

Lawnmower Races

## SAVE THE DATE! WHOLE FARM WATER PLANNING WITH JESSE LEMIEUX

Looking for innovative ways to store or control runoff water on your farm? Want to be prepared for drought years to come? Join us at a location near you to learn from and engage with Jesse Lemieux of Pacific Permaculture!

Date: August 3rd & August 4th

Time: 10:00 a.m. registration

Place: August 3rd in Woking area at Rick & Lorinda Thomes'

August 4th in Hines Creek area at Kim & David Kuntz

For directions to Thomes' or Kuntz's farms, please call Peace Country Beef and Forage Association at 780-835-6799

Cost: \$15/member, \$20/non-member—Lunch included!

# Whole Farm Water Planning Day

## with Jesse Lemieux of Pacific Permaculture



Looking for innovative ways to store or control water on your farm?

Want to be prepared for drought years to come?

Join us at a location near you to learn from and engage with  
Jesse Lemieux of Pacific Permaculture!

<b>10am Registration</b> <b>Cost: \$15/member,</b> <b>\$20/non-member</b> <b>Lunch Included</b>	<b>August 3 Woking @ Rick &amp; Lorinda Thomes'</b> (please call PCBFA for directions)
	<b>August 4 Hines Creek @ Kim &amp; David Kuntz's</b> (please call PCBFA for directions)


For more information or to register, call Jen or Kaitlin with the Peace Country Beef & Forage Association at 780-835-6799 or email [jallen@gprc.ab.ca](mailto:jallen@gprc.ab.ca) or [kmclachlan@gprc.ab.ca](mailto:kmclachlan@gprc.ab.ca)



Brought to you in collaboration with:

PACIFIC PERMACULTURE



 <p><b>YOUR CENSUS. YOUR NEIGHBOURHOOD. YOUR FUTURE.</b></p>	<p><b>VOTRE RECENSEMENT. VOTRE VOISINAGE. VOTRE AVENIR.</b></p>
---	---

### Haven't completed your questionnaire?

You may contact the Census Help Line at 1-855-700-2016 to complete your questionnaire with an agent. Users of TTY (a telecommunications device for people who are deaf) can call 1-866-753-7083.

Starting June 1, 2016 census staff will follow up, by phone or in person, with households whose questionnaires have not yet been received.

### Pas encore rempli votre questionnaire?

Vous pouvez communiquer avec l'Assistance téléphonique du recensement en composant le 1-855-700-2016 afin de remplir votre questionnaire avec l'aide d'un agent. Les personnes qui utilisent l'ATS (un appareil de télécommunications pour personnes sourdes) peuvent composer le 1-866-753-7083.

À partir du 1<sup>er</sup> juin 2016, le personnel du recensement effectuera des suivis, par téléphone ou en personne, auprès des ménages dont les questionnaires n'ont pas encore été reçus.



**2016 Census reminder**  
Complete it today—it's free!  
C'est le moment de le compléter, c'est gratuit.

**Rappel: Recensement de 2016**  
Remplissez-le dès maintenant — c'est la loi.  
Les ménages qui n'ont pas encore de questionnaire à leur disposition.

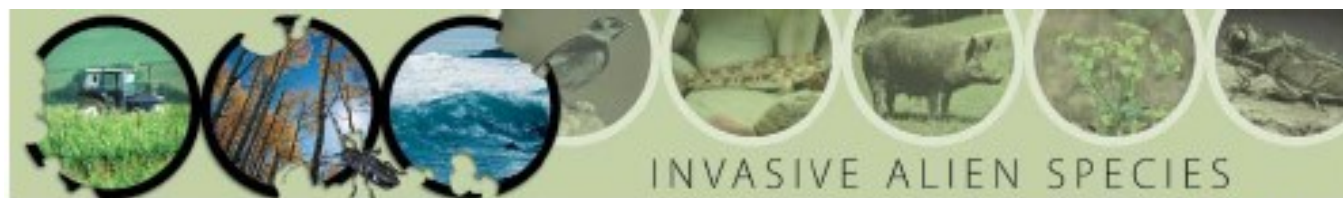
**2016 Census reminder**  
Complete today—it's free.  
Écrivez le questionnaire dès maintenant, c'est gratuit.

**INFORMATION SEULEMENT**

FOR INFORMATION ONLY

[www.census.gc.ca](http://www.census.gc.ca)

[www.recensement.gc.ca](http://www.recensement.gc.ca)



Last updated 05 Feb 2012

# Japanese knotweed

(*Polygonum cuspidatum* syn. *Fallopia japonica*, *Reynoutria japonica*)

aka Japanese bamboo, Mexican bamboo, fleeceflower

**Provincial Designation:** Prohibited Noxious

## Overview:

Japanese knotweed is a shrub-like perennial, native to Japan, which was introduced as ornamental and for landscape screening. It also has been used to stabilize soil in coastal areas.<sup>2</sup> It reproduces both by seed and vegetatively by rhizomes, but the primary means of spread is by rhizomes. Japanese knotweed forms dense stands which shade and crowd out other vegetation<sup>2</sup> – loss of native vegetation alters wildlife habitat. The canes die back over the winter leaving sloping ground susceptible to erosion. Rhizome and shoot growth can damage foundations, walls, pavement and drainage works.<sup>3</sup> A rhizome may extend as deep as 3m and as far away as 7m from the parent plant.<sup>2</sup> Rhizomes are knotty and brown, usually with a dark orange central core and an orange to yellow outer ring.<sup>2</sup>



Photo by:  
Richard Old  
www.richardold.com

PHOTO: Richard Old, XDS Services, Inc., Ripwood.org



PHOTO: Richard Old, XDS Services, Inc., Ripwood.org

## Habitat:

Japanese knotweed needs sufficient moisture and therefore grows in coastlands, riparian areas, and wet grasslands. It grows in a variety of soil types; silt, loam, sand,<sup>2</sup> and tolerates soil pH's from 3 to 8.<sup>2</sup> It generally prefers open areas but can grow in shade.

## Identification:

**Stems:** Stems are numerous, erect, growing to 1-2 m tall, and often have red or purple spots.<sup>1</sup> Shoots first appear coloured red to purple but turn green as they grow, and mature canes are hollow.<sup>2</sup> The stems may be branched nearer the tips.<sup>4</sup>

**Leaves:** Leaves are broadly elliptic with straight edges, the bases are broadly rounded, leaf tips are pointed,<sup>1</sup> and are borne on a 1-2 cm

petiole. The leaves are arranged alternately on the stems, are dark green, and smooth (hairless).<sup>4</sup>

**Flowers:** Numerous small white or greenish flowers are borne in a panicle of only male or female flowers, however both bear vestigial organs of the other sex.<sup>4</sup> The seeds are 2.5 mm long, triangular, shiny,<sup>2</sup> enclosed in a winged calyx,<sup>4</sup> and wind dispersed.

## Prevention:

Never purchase or grow Japanese knotweed. Soil containing rhizome pieces can contribute to spread – fragments as small as 7 g fresh weight can regenerate if a node is present.<sup>2</sup> Seeds have no dormancy requirement, germinate easily and have high viability,<sup>4</sup> so control efforts on stems with mature flowers will result in weed spread.

continued next page

## Japanese knotweed (*continued*)



PHOTO: Chris Green, River to River CMAA, [Invasive.org](http://Invasive.org)



Infestation

PHOTO: Randy Westra, U.S. Geological Survey, [Invasive.org](http://Invasive.org)



Fruit

PHOTO: Jill Swenson, USF National Park Service, [Invasive.org](http://Invasive.org)



Root with new shoot



Foliage

PHOTO: Linda J. Mair, University of Connecticut, [Invasive.org](http://Invasive.org)

### Control:

**Grazing:** It is considered palatable to sheep, donkeys, goats, cattle, and horses.<sup>1</sup> Invasive plants should never be considered as forage.

**Mechanical:** Cutting, mowing, and hand pulling are effective with repetition over several years. Cutting alone is ineffective and may increase lateral spread.<sup>2</sup> Re-growth is very rapid. Hand-pulling is very effective for small, initial populations,<sup>2</sup> and mowing every two weeks has eliminated some patches.<sup>2</sup> Digging is unlikely to succeed because of Japanese knotweed's high rhizome densities and the difficulty of removing all underground material.<sup>4</sup> All plant debris should be disposed of in landfill-bound garbage – careless handling of root pieces will result in new infestations.

**Chemical:** Currently there are no herbicides registered for use on Japanese knotweed.

Always check product labels to ensure the herbicide is registered for use on the target plant in Canada by the Pesticide Management Regulatory Agency. Consult your local Agricultural Fieldman or Certified Pesticide Dispenser for more information.

**Biological:** A Japanese sap-sucking insect, *Aphalara itadori*, has been test released in the UK and Wales.<sup>5</sup>

### REFERENCES

1. Flora of China, [www.efloras.org](http://www.efloras.org)
2. Global Invasive Species Database, *Phytolacca capitulata*, [www.iiasg.org](http://www.iiasg.org)
3. Delivering Alien Invasive Species Inventories for Europe, *Aphalara japonica*, [www.europe-allies.org](http://www.europe-allies.org)
4. Pennsylvania Department of Conservation and Natural Resources, Japanese Knotweed and Giant Knotweed, [www.dcnr.state.pa.us/wcnp/2/groups/public/documents/document/dcnr\\_002281.pdf](http://www.dcnr.state.pa.us/wcnp/2/groups/public/documents/document/dcnr_002281.pdf)
5. CABI, News & Media, Press release 13 June 2011, [www.cabi.org/Type/431/Detail/170](http://www.cabi.org/Type/431/Detail/170)



Seedlings

PHOTO: Ohio State Forest Archival, The Ohio State University, [Invasive.org](http://Invasive.org)

## Worsley Health Centre

# August

# 2016

Sund	Monday	Tuesday	Wednesday	Thursday	Friday	Satu
31	1	2	3	4	5	6
	Closed	NP clinic call for appointment 9-12 1-4	NP clinic call for appointment 9-12 1-4	NP clinic call for appointment 9-12 1-4	EMS 9-12	
7	8	9	10	11	12	13
	EMS 9-12	Immunization Clinic call for appointment Tiny Teeth Clinic By appointment	EMS 9-12	EMS 9-12	EMS 9-12	
14	15	16	17	18	19	20
	EMS 9-12	Immunization Clinic call for appointment	EMS 9-12	EMS 9-12	EMS 9-12	
21	22	23	24	25	26	27
	EMS 9-12	Immunization Clinic call for appointment	EMS 9-12	EMS 9-12	EMS 9-12	
28	29	30	31			
	EMS 9-12	Immunization Clinic call for appointment	EMS 9-12			

**Always call the Health Centre before coming in as schedule is subject to change**

**Worsley Health Centre 780-685-3752**

**Fairview Public Health 780-835-4951**

**Fairview Medical Clinic 780-835-4255**

**Fairview Hospital 780-835-6100**

**Emergency 911**

**Health Link 811**

# Bulletin Board

## Events & Announcements

### Cleardale Riders

#### Event Schedule

August

7th - Gymkhana

21st - Gymkhana

September

3rd & 4th - Final Day

Please remember to update your

### End of Steel Museum

Located at the junction of HWY 64 and HWY 685 at the southern of the two exits for the Village of Hines Creek. It is open from mid May to mid September, Monday to Saturday 10:00 a.m.—6:00 p.m., Sunday 1:00 p.m.—6:00 p.m., last tours at 4:30 p.m. "Bringing the homesteading history of Hines Creek to life." Our museum has three furnished homes, a Lutheran and an Anglican church, a one room school house, historic community hall, NAR caboose, trapper's cabin, contemporary log building with wildlife and forestry exhibits, an old store, a District Nurse's examination room and much more. Our staff offer informative and interesting tours and our inviting grounds are the perfect place to picnic. Farmers' Market Saturdays 10:00 a.m. –1:00 p.m., amazing cinnamon buns. Phone: Curator, Jean Young 780-834-6538 (Wed.– Sat.) or Nancy Van Herk 780-835-7827.

Email: [hinescreekmuseum@gmail.com](mailto:hinescreekmuseum@gmail.com)

Website: [endofsteelmuseum.weebly.com](http://endofsteelmuseum.weebly.com)

### Red Cross Swimming

#### Lessons in Worsley

July 25th—August 5th

August 15th– August 26th

Please Register soon by phoning 780-685-3965.

\$50 registration



Piece Friends Quilt invites you to  
Summer's End Festival Quilt Show

August 27th

10:00 a.m.—5:00 p.m.

Fairview Curling Rink

Admission by donation

Toonie Tea will be served

Vendor Booths at show

Quilters are from Worsley, Hines Creek, Fairview &  
Brownvale

# Community Groups & Organizations, Facilities & Contacts

## Worsley & District Library

780-685-3842    [www.worsleylibrary.ab.ca](http://www.worsleylibrary.ab.ca)  
Worsley & District Library, housed in Worsley Central School, offers library services to the public the following days:

### Tuesdays & Fridays-8:00 am to 4:00 pm

The library is also opened before school and at noon hour on Mondays, Wednesdays and Thursdays. Please call ahead to confirm that the library is open.

As this is a school, we ask that patrons check in at the school office prior to coming into the library.

Your opinion matters to us. If you have read a book that you found particularly interesting and would like to promote it, why not drop us a line [awidlib@hotmail.com](mailto:awidlib@hotmail.com) and tell us the book title, author, and what you found enjoyable about the book. Your comments will be included on our library webpage at the address as well as on our Facebook page at [www.facebook.com/worsleylibrary](http://www.facebook.com/worsleylibrary).

We gratefully accept donations of gently used books and magazines.

### Hines Creek Municipal Library

Tuesday, Wednesday, & Thursday

10:00 am–6:00 pm

Located in the Village of Hines Creek office building.

780-494-3879

### Bear Point Community Library Hours

Monday through Thursday

10:00 am–3:00 pm

## Worsley Pioneer Club

The Worsley Pioneer Club hosts a Seniors Social every Wednesday afternoon from 1-4 pm.

Activities include: card games, floor curling, and more.

Join us for coffee and conversation!

## Hines Creek Arts & Craft Meeting Room

To book the room call Gail at 780-494-3290 or 780-772-1155

## Hines Creek Senior's Drop in Rental

For bookings call: 780-835-1397 or 780-494-2333

## Hines Creek Golf & Country Club

- \* 9 Hole Green Grass
- \* Rental Carts/ Full Kitchen/ Mini Pro Shop
- \* Private Campsites & Public Campsites
- \* Open Tee Times Every day from May to September
- \* Book Tee Times for Private Functions: Company staff parties, family reunions, etc.

Clubhouse: 780-494-2217

Email: [hinescreekgolf@gmail.com](mailto:hinescreekgolf@gmail.com)

## Church Services

### Worsley Baptist Church

Sunday School - 10:00 am

Sunday Services -11:00 am & 7:00 pm

Wednesday Night Service - 7:00 pm

### Worsley United Church

No Regular Services

Contact: Delores Hudak 780-685-3862

### Cleardale Gospel Chapel

Sunday Service - 11:00 am

### Immaculate Heart of Mary Parish Catholic Church

Sunday Service 1:00 pm

### All Saints Ukrainian Catholic Church

every second Sunday 2:30 pm

### Lighthouse Fellowship

Sunday Service 11:00 am

Pastor Mike Ansley

### Mighty Peace Cowboy Church

Every 1st and 3rd Tuesday Service 7:00 p.m

At the Eureka River Hall

Pastor Gary Henderson

# August 2016

PAGE 23

SUN	MON	TUE	WED	THU	FRI	SAT
	1 County Office Closed <b>Heritage Day</b>	2	3	4	5	6
7	8 ASB Mtg. 10:00 a.m.	9	10	11	12	13
14	15 Hines Creek Fire Mtg. 7:00 p.m.	16 Council Mtg. 9:30 a.m.	17	18	19	20
21	22 Worsley Fire Mtg. 7:00 p.m.	23	24	25	26	27
28	29	30	31		August 1st Cont. Hines Creek Fire Mtg. 7:00 p.m.	August 8th Cont. Worsley Fire Mtg. 7:00 p.m.

VOLUME 14, ISSUE 8



Box 240  
Worsley, AB T0H 3W0

Phone: 780-685-3925  
Fax: 780-685-3960  
Email: [info@clearhillscounty.ab.ca](mailto:info@clearhillscounty.ab.ca)

**Allan Rowe**  
Chief Administrative Officer  
**Lori Jobson**  
Corporate Services Manager  
**Ron Jensen**  
Public Works Manager  
**Audrey Bjorklund**  
Community Development Manager

**WE'RE ON THE WEB**  
[www.clearhillscounty.ab.ca](http://www.clearhillscounty.ab.ca)

## COUNCIL CONTACT INFORMATION

[council@clearhillscounty.ab.ca](mailto:council@clearhillscounty.ab.ca)

### Division #1— Miron Croy

Box 1315, Fairview, AB T0H 1L0  
Phone: 780-596-2187

### Division #2—Peter Frixel

Box 552, Hines Creek, AB T0H 2A0  
Phone: 780-494-2467

### Division #3—Lee Svederus

Box 37, Eureka River, AB T0H 1K0  
Phone: 780-685-2117

### Division #4—Jason Ruecker, Deputy Reeve

Box 205 Worsley, AB T0H 3W0  
Phone: 780-685-2144

### Division #5—David Janzen

### Division #6—Dan Fletcher

Box 53, Cleardale, AB T0H 3Y0  
Phone: 780-835-0658

### Division #7—Charles Johnson

Box 22, Cherry Point, AB T0H 0T0  
Phone: 780-595-2294  
Fax: 780-595-2332

## Agricultural Service Board Members

Brian Harcourt—Chairperson  
780-494-2231  
Baldur Ruecker – Deputy Chair  
780-685-2546  
Stan Logan—Member at Large  
780-685-3323  
Charlie Johnson—Councilor  
780-685-2584  
Garry Candy—Member at Large  
780-494-2055  
MacKay Ross—Member at Large  
780-835-0356

## Fire Trailer Locations

**Bear Canyon**—Water Plant  
NW 22 83 12 W6M

**Cleardale**—Water Plant  
SW 11 85 10 W6M  
780-685-3670

**Clear Prairie**—Jim Evans  
SW 34 87 10 W6M  
780-685-2610

**Deerhill**—Ken Knoepfli  
NW 9 84 2 W6M  
780-596-2259

**Eureka River**—Lee Franklin  
NE 24 86 6 W6M  
780-834-6080

**Royce**—Melvin Worobetz  
SE 16 83 6 W6M  
780-494-3420

**Whitelaw**—Bill Wald  
SW 28 83 1 W6M  
780-596-2121

**Montagneuse Valley**  
Percy Stephenson yard  
SE 36 85 5 W6M  
Jim 780-494-2458

## County Transfer Site Hours—May 1st to September 30th

All Transfer Sites are closed on Sunday

Transfer Site	Monday	Tuesday	Wednesday	Thursday	Friday	Saturday
<b>Bear Canyon</b>	12:00 pm 8:00 pm	closed	closed	closed	closed	closed
<b>Clear Prairie</b>	closed	closed	closed	4:00 pm 8:00 pm	closed	closed
<b>Cleardale</b>	closed	11:00 am 3:00 pm	closed	closed	closed	12:00 pm 8:00 pm
<b>David Thompson</b>	closed	closed	closed	closed	12:00 pm 8:00 pm	closed
<b>Eureka River</b>	closed	closed	12:00 pm 8:00 pm	closed	closed	closed
<b>Hines Creek</b>	closed	closed	closed	closed	closed	8:00 am 5:00 pm
<b>Royce</b>	closed	closed	closed	12:00 pm 8:00 pm	closed	closed
<b>Whitelaw</b>	closed	closed	closed	closed	closed	12:00 pm 8:00 pm
<b>Worsley</b>	closed	4:00 pm 8:00 pm	closed	closed	12:00 pm 8:00 pm	closed