

**AGENDA**  
**CLEAR HILLS COUNTY**  
**AGRICULTURAL SERVICE BOARD MEETING**  
**March 9, 2015**

---

The Agricultural Services Board meeting of Clear Hills County will be held immediately after the Organizational meeting on Monday, March 9, 2015 in the Council Chambers of the County Office, Worsley, Alberta.

1. CALL TO ORDER
2. AGENDA
3. ADOPTION OF PREVIOUS MINUTES  
January 12, 2015 ..... 2
4. BUSINESS ARISING
5. OLD BUSINESS
  - a. Activity Report ..... 6
  - b. Date, Time and Place of Board Meetings ..... 8
6. NEW BUSINESS
  - a. Portable Weed Incinerator ..... 9
  - b. Field Report Visit ..... 10
  - c. Genetically Modified Organisms (GMO) ..... 22
  - d. Water Management ..... 24
  - e. 2015 Agricultural Service Board Summer Tour ..... 30
7. REPORTS
  - a. Community Development Manager Report ..... 43
  - b. Agricultural Fieldman Report ..... 48
  - c. Board Reports ..... 61
9. INFORMATION & CORRESPONDENCE ..... 72
10. CONFIDENTIAL
11. ADJOURNMENT

**MINUTES OF CLEAR HILLS COUNTY  
AGRICULTURAL SERVICE BOARD MEETING  
COUNTY COUNCIL CHAMBERS  
January 12, 2015**

PRESENT

Brian Harcourt	Chair
Mackay Ross	Member
Leslie Davis	Member
Jake Klassen	Council Representative
Stan Logan	Member

IN ATTENDANCE

Aaron Zylstra	Agricultural Fieldman
Audrey Bjorklund	Community Development Manager
Sarah Hayward	Community Development Clerk
Randy Perkins	Alberta Agriculture

IN REGRET

Baldur Ruecker	Deputy Chair
----------------	--------------

CALL TO ORDER

Chair Harcourt called the meeting to order at 10:45am.

AGENDA

**AG01 (01/12/15)**

**RESOLUTION by Deputy Reeve Klassen that this Agricultural Service Board adopts the agenda governing the January 12, 2015 Regular Agricultural Service Board Meeting with the following additions and deletions:**

**Delete: 5.b. Date, Time and Place of Board Meetings  
Add 6. b. Meat inspectors CARRIED.**

MINUTES

**AG02 (01/12/15)**

**RESOLUTION by Member Davis that this Agricultural Service Board adopts the minutes of the November 10, 2014 Agricultural Service Board Meeting as presented. CARRIED.**

OLD BUSINESS

Activity Report

The Board was presented with the Agricultural Service Board Activity Report.

**AG03 (01/12/15)**

**RESOLUTION by Member Ross that this Agricultural Service Board accepts the January 12, 2015 Agricultural Services Board Activity Report as presented. CARRIED.**

Large Animal Composting

The Board directed the large animal composting topic be brought back to a future ASB meeting.

**AG04 (01/12/15)**

**RESOLUTION by Member Davis that this Agricultural Service Board accept for information the large animal composting report from Member Logan. CARRIED.**

**AG05 (01/12/15)**

**RESOLUTION by Member Ross that this Agricultural Service Board to arrange for two large animal composting demonstration sites. CARRIED.**

Veterinary Services  
Incorporated

The Board directed that the County's and the Veterinary Services Incorporated (VSI) Municipal partners' service agreements be brought to the January Agricultural Service Board Meeting for review.

**AG06 (01/12/15)**

**RESOLUTION by Deputy Reeve Klassen that this Agricultural Service Board accept for information the review Veterinary Services Incorporated service agreement. CARRIED.**

Holistic Management  
Course

The Board directed attendance to the Holistic Management by Don and Bev Campbell on January 15-17<sup>th</sup>, 2015 & 22-24, 2015 be tabled to the January Agricultural Service Board Meeting.

**AG07 (01/12/15)**

**RESOLUTION by Member Ross that this Agricultural Service Board accept for information that a Holistic Management Course is being held on January 5-17 and 22-24, 2015 at the Watehole Hall. CARRIED.**

NEW BUSINESS

Provincial Agricultural  
Service Board  
Conference

The Provincial Agricultural Service Board Conference will be held at the Fantasyland Hotel in Edmonton on January 20-23, 2015.

**AG08 (01/12/15)**

**RESOLUTION by Member Ross that this Agricultural Service Board authorize the attendance of Chair Harcourt, Deputy Reeve Klassen, Member Logan, Member Davis and Deputy Chair Ruecker to attend the Provincial Agricultural Service Board Conference on January 20-23, 2015 in Edmonton, Alberta. CARRIED.**

Meat Inspectors

Member Davis requested that this item be added to this Agenda.

**AG09 (01/12/15)**

**RESOLUTION by Member Ross that this Agricultural Service Board direct administration to investigate the current number of meat inspectors assigned to the north part of the province and bring the information on meat inspector numbers and inspection processes to a future ASB meeting. CARRIED.**

Chair Harcourt Recessed for lunch at 11:51 a.m.

Chair Harcourt reconvened at 12:30 p.m.

**AG10 (01/12/15)**

**RESOLUTION by Member Logan that this Agricultural Service Board withdraw Resolution 16, Preventing Licensing of Tolerant Wheat from the Provincial ASB conference. CARRIED.**

REPORTS

Agricultural  
Fieldman's Report

The Agricultural Fieldman had the opportunity to present his report.

AG11 (01/12/15)

**RESOLUTION by Member Ross that the Agricultural Service Board accepts the January 12, 2015 Agricultural Fieldman report for information. CARRIED.**

Board Reports

At this time the Board members will have an opportunity to present their reports.

-Member Logan: Attended the Western Canadian Grazing Conference on December 9- 11 in Edmonton, AB.

-Member Davis: Attended Cattle Days on December 3, 2014 and the Western Canadian Grazing Conference on December 9 – 11, 2014 in Edmonton, AB

- Member Ross: Attended the Western Canadian Grazing Conference on December 9 – 11, 2014 in Edmonton, AB

- Deputy Chair Harcourt: Attended the Alberta Financial Services customer appreciation day on November 14, 2014 in Fairview, AB.

AG12 (01/12/15))

**RESOLUTION by Member Davis that this Agricultural Service Board accepts the Board members' written or verbal reports of January 12, 2015 for information. CARRIED.**

INFORMATION &  
CORRESPONDENCE

The following information and correspondence was provided to the Board:

1. Low Stress Handling Clinic with Dylan Biggs – Poster – (63-02-02)
2. Winter Watering System – Poster – (63-02-02)
3. Young Cattlemen's Days – Poster – (63-02-02)
4. Peace Country Agronomy Update – Poster – (63-02-02)
5. Peace Country Beef and Forage Association – Newsletter – (63-02-02)
6. Peace Country Beef and Forage Association Winter Water – Newsletter – (63-02-02)
7. Peace Country Beef and Forage Association – Job Listing – (63-02-02)
8. Chris Warkentin – Response Letter – (63-02-02)
9. 2015 Wheat Midge Forecast – Report and Map – (63-02-02)
10. Peace Country Crop Production Workshop – Poster – (63-02-02)

AG13 (01/12/15)

**RESOLUTION by Member Ross that this Agricultural Service Board approve the attendance of Member Davis and Chair Harcourt of the Winter Watering System tour on January 31, 2015 in Silver Valley, Alberta. CARRIED.**

AG14 (01/12/15)

**RESOLUTION by Deputy Reeve Klassen that this Agricultural Service Board approve attendance of all Agriculture Service Board members who can attend the Peace Agronomy Update on January 15, 2015 in Fairview, Alberta. CARRIED.**

- AG15 (01/12/15)** RESOLUTION by Member Ross that this Agricultural Service Board approve attendance of all Agriculture Service Board members who can attend the Peace Country Beef and Forage Association Annual General Meeting February 20, 2015. CARRIED.
- AG16 (01/12/15)** RESOLUTION by Member Logan that this Agricultural Service Board approve attendance of all Agriculture Service Board members who can attend the Peace Country Crop Production Workshop on February 12, 2015 in Spirit River. CARRIED.
- AG17 (01/12/15)** RESOLUTION by Member Ross that this Agricultural Service Board approve attendance of Member Logan and Deputy Reeve Klassen who can attend the Alberta Farm Animal Care Conference at the Calgary Stampede grounds on March 26 and 27, 2015. CARRIED.
- AG18 (01/12/15)** RESOLUTION by Member Ross that this Agricultural Service Board receives the information & correspondence of January 12, 2015 as presented. CARRIED.
- ADJOURNMENT Chair Harcourt adjourned the Agricultural Service Board meeting at 1:21 p.m.

---

CHAIRPERSON

---

AGRICULTURAL FIELDMAN

# Clear Hills County

## Request For Decision (RFD)

Meeting:	Agricultural Service Board
Meeting Date:	March 9, 2015
Originated By:	Aaron Zylstra, Agricultural Fieldman
Title:	<b>ACTIVITY REPORT</b>
File:	63-10-02

### DESCRIPTION:

The board is presented with the Agricultural Service Board Activity Report.

### BACKGROUND:

The Activity report is helpful to administration and the board for tracking the status of resolutions and directions from the board. Items will stay on the report until they are completed. Items that are shaded indicate that they are completed and will be removed from the list once presented at the current Agricultural Service Board meeting.

### ATTACHMENTS:

- Agricultural Service Board Activity Report

### RECOMMENDED ACTION:

RESOLUTION by \_\_\_\_\_ that this Agricultural Service Board (ASB) accepts the March 9, 2015 ASB Activity Report as presented.

Initials show support - Reviewed by: Manager: *ABj* AgFieldman: *R*



## Senior Management Team Agricultural Service Board

### Activity Report for March 9, 2015 Page 1 of 2

Budget Items:

CAO = Chief Administrative Officer

DO= Development Officer

EA = Executive Assistant

Completed Items:

CSM = Corporate Services Manager

AF = Ag. Fieldman

CDM = Community Development Manager

**MOTION          DATE          DESCRIPTION          DEPT          STATUS**

REGULAR AGRICULTURAL SERVICE BOARD MEETINGS				
<b>February 10, 2014</b>				
AG29	(02/10/14)	RESOLUTION by Deputy Reeve Klassen that this Agricultural Service Board approve the 2014 Farm Family to Pieter and Nancy van Herk and family and direct administration to purchase a gate sign to a maximum of \$300 to be presented at the County's Agricultural Trade Show banquet on April 12th, 2014.	AF	DONE
<b>November 10, 2014</b>				
AG154	(11/10/14)	RESOLUTION by Member Davis that this Agriculture Board recommend to Council to control Foxtail Barley on County roadsides.	AF	Developing inventory of infestation, options and cost estimates for 2016 budget
<b>January 12, 2015</b>				
AG05	(01/12/15)	RESOLUTION by Member Ross that this Agricultural Service Board To arrange for two composting demonstration sites for large animal composting.	AF	In the works
AG09	(01/12/15)	RESOLUTION by Member Ross that this Agricultural Service Board to investigate the current number of meat inspectors assigned to the north part of the province and bring the information on meat inspector numbers and inspection processes to a future ASB meeting.	AF	In AF report DONE

# Clear Hills County

## Request For Decision (RFD)

Meeting:	Agricultural Service Board
Meeting Date:	March 9, 2015
Originated By:	Audrey Bjorklund Community Development Manager
Title:	<b>DATE, TIME AND PLACE OF BOARD MEETINGS</b>
File:	63-10-02

### DESCRIPTION:

The Agricultural Service Board meets every month except April and August. The Board will now select the day of the month and the commencement time for the monthly meetings. All members must be present to change the date, time and place of the meetings.

### BACKGROUND:

AG147 (11/10/14) RESOLUTION by Member Ross that this Agricultural Service Board willtable the date, time and place of board meetings, until a meeting when all board members are present. CARRIED.

Procedure 6301-01(3.2) states that the Board will meet every second Wednesday of the month except for April and August and that Regular meetings commence at 10:00 a.m., unless an earlier start time is selected to deal with special issues.

AG22(02/11/13) RESOLUTION by Councilor Klassen that this Agricultural Service Board authorize that ten (10) regular meetings be held the second Monday of every month at 10:00 a.m., with the exception of April and August. At the call of the Chair, special meetings shall be posted 48 hours in advance. CARRIED.



The board may change the day and time of meetings by resolution if the second Wednesday and 10:00 a.m. start time are not acceptable to the members.

### OPTIONS:

1. Set ASB meetings for the second Monday of each month except April and August at a selected time.
2. Set ASB meetings for an alternate day of each month except April and August at a selected time.
3. Table the date, time and place of Board meetings until all members are present.

### RECOMMENDED ACTION:

RESOLUTION by \_\_\_\_\_ that this Agricultural Service Board authorize that ten (10) regular meetings are to be held the **second** Monday of each month at **10:00 a.m.**, with the exception of April and August. At the call of the Chair, special meetings shall be posted 48 hours in advance.

Initials show support - Reviewed by:	Manager: 	AF: 
--------------------------------------	---	---



# Clear Hills County

## Request For Decision (RFD)

Meeting:	<b>Agricultural Service Board Meeting</b>
Meeting Date:	March 9, 2015
Originated By:	Aaron Zylstra, Agricultural Fieldman
Title:	<b>PORTABLE WEED INCINERATOR</b>
File Code:	63-40-02

### DESCRIPTION:

The Agricultural Service Board is requested to review options for incinerating weeds.

### BACKGROUND:

In researching specifications and manufacturers for portable incinerators, administration found the following:

1. An air curtain designed burner. This burner uses air flow to contain smoke and ashes in the firebox and at the same time it 'stokes' the fire to create a hotter more complete burn. The firebox does not have a lid and is fueled by wood and other similar debris. Manufactured in the USA it would cost around \$75,000 CDN.
2. A two stage diesel fired incinerator. Sold in Canada. The combustion chamber can handle about 3 garbage bags. The approximate cost is around \$55,000.
3. An oilfield rental company that rents out incinerators. Diesel fired; portable incinerator can be delivered or picked up. The cost is \$60/day, \$150 to \$250/hr for delivery. Estimated annual cost for 7 days use would be \$2,000.

Administration is recommending that we rent the incinerator as needed for the next 2 – 3 years and re-evaluate the necessity of purchasing an incinerator. At the current rates and prices it would take 25 years of renting to equal the cost of purchasing.

The 2015 capital budget included \$60,000 for the purchase of a weed disposal incinerator.

C47-15(01/13/15) RESOLUTION by Councillor Fletcher to tender for a Portable Weed Disposal Incinerator, as approved in the 2015 Capital Plan. CARRIED.

### OPTIONS:

1. Recommend Council to rescind the previous motion to proceed to tender.
2. Recommend Council move the incinerator to the 2018 capital budget after staff has had time to evaluate the process of renting an incinerator.

### RECOMMENDED ACTION:

RESOLUTION by \_\_\_\_\_ that this Agricultural Service Board recommend to Council to rescind motion C47-15(01/13/15) regarding the tender for a Portable Weed Disposal Incinerator.

RESOLUTION by \_\_\_\_\_ that this Agricultural Service Board recommend to Council to move the purchase of an incinerator to the 2018 capital budget after staff has had time to evaluate the process of renting a weed incinerator.

Initials show support - Reviewed by:

Manager:

*ABj*

AF:

*AZ*

# Clear Hills County

## Request For Decision (RFD)

Meeting:	<b>Agricultural Service Board Meeting</b>
Meeting Date:	March 9, 2015
Originated By:	Aaron Zylstra, Agricultural Fieldman
Title:	<b>FIELD REPORT VISIT</b>
File Code:	63-10-02

### DESCRIPTION:

The Board is presented with the Clear Hills County Field Visit report from the July 3, 2014 site visit by the Agricultural Service Board Program Manager.

### BACKGROUND:

### ATTACHMENT:

- Clear Hills County Field Visit Report

### OPTIONS:

### RECOMMENDED ACTION:

RESOLUTION by \_\_\_\_\_ that this Agricultural Service Board direct an implementation plan for the recommended action contained in the Agricultural Service Board Program Manager's Clear Hills County Field Visit report of July 3, 2015 be prepared for review at the next meeting.

Initials show support - Reviewed by:

Manager:

*ABj*

AF:

*AR*

February 13, 2015

**RECEIVED**

**MAR - 2 2015**

**CLEAR HILLS COUNTY**

Mr. Stan Logan  
ASB Chairman  
Clear Hills County  
Box 240  
Worsley, AB T0H 3W0

Dear Mr. Logan:

Please find enclosed the report from the field visit we conducted with Clear Hills County in 2014.

The ASB Team members appreciated the opportunity to visit with the ASB members and Agricultural Fieldman to learn about the County's programs related to the ASB Grant.

Please contact me directly if you have questions regarding the field visit report. I can be reached at (780) 644-4432.

Yours truly,



Maureen Vadnais  
Program Manager  
Agricultural Service Board Program

Enclosure

cc: Allan Rowe, CAO  
Aaron Zylstra, Agricultural Fieldman

RECEIVED

MAR - 2 2015

CLEAR HILLS COUNTY

# Clear Hills County Field Visit July 3, 2014

---



## INTRODUCTION

The Agricultural Service Board (ASB) Program conducts field visits annually to ensure that ASB Grant dollars are being used appropriately to support the objectives of the ASB Grant Program. Information gathered from field visits is used to assist other ASBs in the development and delivery of programs related to the ASB Grant and to provide evidence to the Office of the Auditor General that ASB Grant dollars are being used effectively and efficiently to support programs related to the ASB Act and environmental extension and awareness.

Alberta Agriculture and Rural Development (ARD) visited 18 municipalities in 2014 for the field visit program. Six municipalities from the South Region were chosen to receive a field visit in 2014 as ARD would like to have visited all 70 ASBs by the end of 2015. The following municipalities were visited in 2014:

South	Central	Northwest	Northeast	Peace
M.D. of Acadia	Camrose County	Westlock County	M.D. of Bonnyville	Clear Hills County
Cypress County	Ponoka County	Woodlands County	Lamont County	Mackenzie County
County of 40 Mile	County of Wetaskiwin	Yellowhead County	County of Two Hills	County of Northern Lights
Special Area 2				
Special Area 3				
Special Area 4				

ASBs were primarily randomly selected to receive field visits. ARD did put priority on visiting municipalities where an agricultural fieldman had been recently appointed in some instances in order to meet the new agricultural fieldman and allow him the opportunity for individual training on the ASB Program. Once one municipality is chosen for a region, ARD reviews its records to determine if adjacent municipalities have been visited. Adjacent municipalities are often chosen, especially when there are partnerships in place under the Environmental Funding Stream, to allow ARD to gain a broader perspective of how municipalities are working together to ensure the ASB Grant requirements are being met.

## EXECUTIVE SUMMARY

Maureen Vadnais, Agricultural Service Board Program Manager, attended the field visit for Clear Hills County on July 4, 2014. I met with the agricultural fieldman, Aaron Zylstra, and reviewed examples of various components of the ASB Grant Program that Clear Hills has implemented using funding received from the Legislative and Environmental Funding Streams of the Grant.

Clear Hills County was able to demonstrate programs put into place for the Legislative Funding Stream but did not have the opportunity to visit any projects related to the Environmental Funding Stream at the time of the field visit. This indicates that ASB Grant dollars are being used effectively to support activities related to the Legislative Funding Stream but we are unable to make an assessment at this

time as to the effectiveness of dollars allocated under the Environmental Funding Stream. Clear Hills County works with the M.D. of Fairview and Peace Country Beef and Forage Association to deliver the Environmental Funding Stream so further follow up is required in 2015 to adequately assess whether Environmental Funding Stream dollars are being used effectively. The ASB Grant Program will be conducting a field visit in 2015 in the neighbouring municipality of Fairview and will review programs related to the Environmental Funding Stream of this grant at that time.

## **FIELD TOUR SITES**

- Met with Aaron Zylstra, agricultural fieldman, and Andrea (weed inspector) and toured office and shop
  - Saw samples gathered from seed cleaning plant inspections
  - Has form 7 certification
  - MRF program being used for weed inspection program
  - Rental equipment
  - Spray boom that Aaron designing to help with roadside spraying program
  - Inspectors trucks have spray rack in them and is an authorized assistant
  - Saw example of inspector identification with joint authority for Hines Creek
- Baseball diamond to look at possible sulphur cinquefoil, saw Floodman's thistle
- Field where notice had been previously issued for Canada thistle infestation
  - The farmer that the notice was issued to has rented some of his land and kept some under his control – land that is rented is "clean" while land under his control is infested and looks like nothing has been seeded in those quarters
- Area where caraway has been controlled – could see areas where sprayer couldn't reach
- Mowing program example along roadside
- Hines Creek
  - Concrete dump site to look at spraying done for yellow toadflax infestation – plants looked injured
  - Ox eye daisy and Himalayan balsam infestation – landowner has been working with County to destroy
- Sewage lagoon – example of spraying program
- George Lake campground

## **OBSERVATIONS**

- Agricultural fieldman is very innovative in finding solutions to address problems within program i.e. development of an extendable boom for roadside spraying program, use of the MRF program
- Primary focus of program appears to be on the *Weed Control Act*. Did not see examples of inspections or control work done under the *Agricultural Pests Act* or *Soil Conservation Act*. Agricultural fieldman did have his Form 7 certificate indicating he was aware of duties related to the *Agricultural Pests Act*.

- Mowing appears to be primary method used for weed control for roadside program
- Weed control program appears to be effective – right of ways were fairly free of noxious weed infestations
- Like that they are using MRF program for inspection program – program seems limited at this time as it doesn't allow the inspectors to add disease inspections into it
- Did not appear to have a process in place for duties related to the *Animal Health Act*.
- Lots of rental equipment available to farmers. Some of the equipment is unique to Clear Hills County, such as the Rotowipers.

## RECOMMENDATIONS

- More focus needs to be placed on duties related to the *Agricultural Pests and Soil Conservation Acts*.
  - Recommend that municipality surveys some fields every year for the presence of clubroot, virulent blackleg and fusarium
  - Inspections for the *Soil Conservation Act* are completed on an "as needed" basis
- Ensure independent appeal committees are appointed annually under the *Agricultural Pests and Weed Control Act*
- Work with local veterinarians to ensure that there is a process put into place for reporting of reportable and notifiable diseases
- May want to look at an emergency response plan in the event of a large scale animal disease outbreak
- Continue with research and innovation within program – solutions that are being investigated show potential to make program more effective and efficient

# APPENDIX



# *Agricultural Pests Act Programs*

Form 7 Certification



# Weed Control Act Programs

## MRF Program



Hines Creek: Mapping Weed Infestation



## Inspection Reports



**Clear Hills County**  
 Box 240, Worsley, Alberta T0H 3A0 Phone: (780) 685-2925  
 Report ID: SW\_5\_81\_9\_6

### PARCEL INSPECTION REPORT

Legal Land Description: SW-5-84-9-6 Report prepared by: Andrea Ruether

Current Name: PRATT STANLEY & SANGENGLER	Inspector's Name:
Address: ECR 05	Address:
City: HINES CREEK	City: Prussia
Parcel Code: TOP 240	Parcel Code:
Telephone Number:	Telephone Number:

#### Location of Weeds



12

### PARCEL INSPECTION REPORT

Report ID: SW\_5\_81\_3\_6

#### Weed Inspection for area: A

Has the Owner been contacted? Yes  No  Has the Occupant been contacted? Yes  No

Inspection on: Jul 2, 2014

Inspected by: Andrea Ruether

Time of entry to property: Jul 2, 2014 5:23 PM

Time out to property: Jul 2, 2014 6:23 PM

Weed Type	Redtop, Canada (Redtop)		
Habitat	Crop		
Growth Stage	Flowering: Budding		
Abundance	Many plants		

#### Comments:

Fewer than here. Looks like field was worked up last year. This is coming up again.

#### Weed Inspection for area: B

Has the Owner been contacted? Yes  No  Has the Occupant been contacted? Yes  No

Inspection on: Jul 2, 2014

Inspected by: Andrea Ruether

Time of entry to property: Jul 2, 2014 5:21 PM

Time out to property: Jul 2, 2014 6:21 PM

Weed Type	Redtop, Canada (Redtop)		
Habitat	Crop		
Growth Stage	Flowering: Budding		
Abundance	Field infestation		

#### Comments:

Whatever growing in field. This is very thick almost everywhere. Looks like nothing was done last year.

22



**Clear Hills County**  
 Box 240, Worsley, Alberta T0H 3W0 Phone: (780) 685-3925  
 Report ID: 14197\_SV\_1\_24\_3\_6  
**WEED INSPECTION REPORT**

Legal Land Description: **5W-1-24-3-6** Report prepared by: **Andrea Ruelter**  
 Has the Owner been contacted? Yes  No  Has the Occupant been contacted? Yes  No

Owner Name: <b>PROSEBY, JOSEPH &amp; TRISHA ASAY</b>		Occupant Name:	
Address: <b>RD# 151</b>		Address:	
City: <b>FARVIEW</b>	Province: <b>AB</b>	City:	Province:
Postal Code: <b>T0H 1L0</b>	Telephone Number:	Taxal Code:	Telephone Number:

Location of Weeds:



102

**WEED INSPECTION REPORT**  
 Report ID: 14197\_SV\_1\_24\_3\_6

Inspection on: **Jul 2, 2014**  
 Inspected by: **Andrea Ruelter**  
 Time of entry to property: **Jul 2, 2014 3:47 PM** Time out to property: **Jul 2, 2014 3:47 PM**

Weed Type	<b>dry, weeds (browns)</b>		
Habitat	<b>Yard</b>		
Growth Stage	<b>Flowering</b>		
Abundance	<b>patchy infestation</b>		

Comments:  
 large patch along west side by road, smaller patches along driveway

Picture 1: Data Picture Taken: 2014-07-02 15:50:01 Location: 5W-1-24-3-6



Description: **dry in yard, taken from road**

202

**Seed Cleaning Plant Inspection Samples**



**Inspector's Truck w/ Spray Unit**

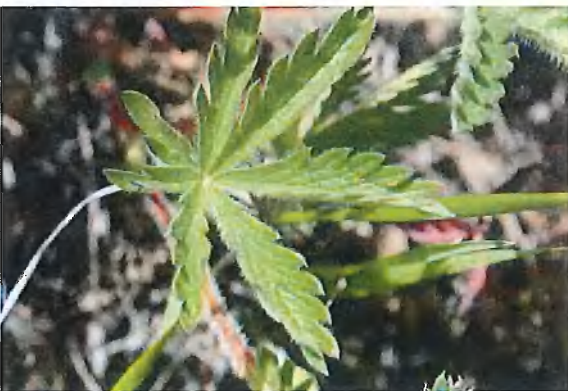


**Extendable Spray Boom**





Ball Diamond: Sulphur Cinquefoil



Hines Creek: Toadflax control



Himalayan Balsam Eradication Project



# Other Programs: Rental Equipment



# Clear Hills County

## Request For Decision (RFD)

Meeting:	<b>Agricultural Service Board Meeting</b>
Meeting Date:	March 9, 2015
Originated By:	Chair Harcourt
Title:	<b>GENETICALLY MODIFIED ORGANISMS (GMO)</b>
File Code:	63-10-02

### DESCRIPTION:

Chair Harcourt has requested the Board be provided with the attached article on Genetically Modified Organisms for discussion purposes.

### BACKGROUND:

### ATTACHMENTS:

- Debunking 5 Common myths about GMO'S article

### OPTIONS:

### RECOMMENDED ACTION:

RESOLUTION by \_\_\_\_\_ that this Agricultural Service Board...

Initials show support - Reviewed by:	Manager: <i>ABj</i>	AF: <i>A</i>
--------------------------------------	---------------------	--------------

# Debunking 5 common myths about GMOs

## News Canada

We're all inundated with information every day and with so many conflicting stories in the media and on the Internet about genetically modified organisms (GMOs), it's no wonder some people are confused. Let's dig a little deeper into some common misconceptions about GMOs.

**Misconception #1:** If it's extra-large, seedless, looks weird, tastes bad, and feels squishy – it must be a GMO.

Just because your watermelon is extra-large doesn't mean it's been genetically modified. In fact, in Canada there are only four GM crops commercially available – corn, soybeans, canola and sugar beets.

**Misconception #2:** GMOs aren't safe.

GM crops are among the most thoroughly tested in history. Trillions of meals containing GM

ingredients have been consumed worldwide without a single credible case of harm. Before any new GMO makes it to market, it must be extensively tested to ensure it is safe for people, animals and the environment.

Many independent scientists and organizations around the world have endorsed the safety of these crops – including the United Nations Food and Agriculture Organization, the World Health Organization, the American Medical Association and, here in Canada, Health Canada.

**Misconception #3:** There is animal DNA in GMOs.

There are no commercial GM crops on the market today that have been genetically engineered using animal genes.

**Misconception #4:** GMOs have pesticides injected into them.

Some crops, like corn and cotton, have been genetically modified to

resist pests that are otherwise controlled through pesticides. These seeds contain a protein called *Bacillus thuringiensis* (Bt), which is naturally found in the soil, and allows them to fend off very specific pests. Bt is not toxic to humans and has been used in organic farming as a spray for a century.

**Misconception #5:** GMO companies force farmers to grow their crops.

Farmers are savvy business people who choose to grow the seeds that work best on their farms – this can include GM crop varieties and organic, hybrid and conventional seeds. Canadian farmers have access to many different types of seeds and often grow a combination of different types of seed on their farms.

For more information on GMOs visit [www.gnoanswers.com](http://www.gnoanswers.com).

[www.newsCanada.com](http://www.newsCanada.com)



# Clear Hills County

## Request For Decision (RFD)

Meeting:	<b>Agricultural Service Board Meeting</b>
Meeting Date:	March 9, 2015
Originated By:	Member Davis
Title:	<b>WATER MANAGEMENT</b>
File Code:	63-10-02

### DESCRIPTION:

Member Davis has requested that water management and the protection of aquifers be included in the agenda.

### BACKGROUND:

### ATTACHMENTS:

- Grimshaw Gravels Aquifer information

### OPTIONS:

### RECOMMENDED ACTION:

RESOLUTION by \_\_\_\_\_ that this Agricultural Service Board...

Initials show support - Reviewed by:

Manager:

*ABj*

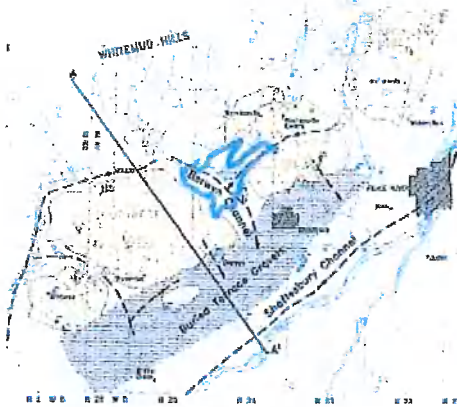
AF:

*dg*




[Home](#)
[Municipal District Office](#)
[Residents](#)
[Events & Attractions](#)

## Grimshaw Gravels Aquifer



The Grimshaw Gravels Aquifer Management Advisory Association is inviting residents who live within the boundaries of the Grimshaw Gravels Aquifer, and have private working wells, to participate in an ongoing water quality monitoring program. Participants are requested to test your water well up to twice per year and forward the data sheet, along with your well depth, to the M.D. of Peace No.135 office in Berwyn. The purpose of this program is to ensure the long-term health of our Aquifer. Sample bottles can be picked up at the Public Health Office in Peace River or Fairview. If you require more information, please contact the M.D. of Peace office at 780-338-3845 or email [mdpeace@wispernet.ca](mailto:mdpeace@wispernet.ca).

### Gravels Aquifer Management Advisory Association

In June of 1993, Hugh Bailey from PFRA called a meeting of interested parties to address the following:

1. can the aquifer sustain present use?
2. to be pro-active in protecting against contamination of the aquifer due to sump holes, borrow pits, gravel pits and abandoned wells, which may allow pesticides to drain into the aquifer.

The committee representatives were from the Municipalities of M.D. of Clear Hills No. 21, M.D. of Fairview No. 136, M.D. of Peace No. 135, M.D. of Northern Lights No. 22, the Town of Grimshaw, the Village of Berwyn and



### Latest News

- [Virulent Blackleg & Club Root Workshop](#)  
February 6, 2015
- [SITUATIONAL ANALYSIS OF RECREATION ACTIVITIES, INFRASTRUCTURE & SERVICE DELIVERY](#)  
January 26, 2015
- [Winter Hours at Griffin Creek Landfill](#)  
November 5, 2014
- [Wild Boar at Large Bounty Program](#)  
November 5, 2014
- [For Rent: Grain Bag Roller](#)  
September 16, 2014

### Quick Links

- [Bill Payment](#)
- [Contact](#)
- [Road Bans](#)
- [Development Permit Application](#)
- [Grant Funding Application Form](#)
- [Lac Cardinal Hall Rental](#)
- [MD Tent](#)
- [Landfill Site](#)
- [MMSA - Subdivision Agency](#)
- [Mighty Peace Tourist Association](#)
- [Peace River Museum](#)
- [Alberta One Call](#)
- [Electronic Recycling Association](#)

### Upcoming Events

- [Alberta Pond Hockey Championships](#)

representatives from the Water Cooperatives of Griffin Creek, Weberville and East Grimshaw. The technical advisors were from PFRA, Alberta Agriculture and Alberta Environment. The Mackenzie Regional Planning Commission provided secretarial services. The committee agreed to develop a community focused management plan for the Grimshaw Gravels Aquifer.

March 13 2015 -

• [North Peace Stampede](#)

July 31 2015 -

General Location plan – The aquifer is present in the four rural municipalities with users of aquifer also including Grimshaw and Berwyn.

The Committee's goal was to develop an aquifer management plan that stressed the wise use of groundwater and to encourage practises that will protect the groundwater from contamination.

From time to time, other technical representatives from Alberta Labour and Public Health attended the meetings to provide information on sewage disposal regulations and the effects that may have on the aquifer.

Local municipalities provided locations of active and inactive gravel pits, municipal, provincial and private public wells, sewage lagoons and landfill sites.

Each municipality surveyed landowners with property located above the aquifer to determine their usage of water. The questionnaire contained questions on well data, depth, static water level, diameter, active or inactive, usage, and location of wells in relation to buildings, corrals, and sewage systems.

Landowners were asked for opinions on water quality, quantity, safety of the drinking water, taste, odour, scaling or corrosion of water pipes and to indicate what they felt were potential sources of water contamination.

The landowners were also asked to indicate what type of information would be useful to them in managing their own farm/residential water supply. In 1994/95 a consultant prepared a hydrogeology study.

Using the information, as well as technical and statistical information existing in provincial government departments, the Committee decided to produce a technical report on the aquifer which would provide the Committee with the information needed to make informed decisions on aquifer related issues with the goal of ensuring sustainable development. **The Technical Report is available online at the bottom of this screen as a file that can be opened. There is also a file below with the maps that are contained in the Technical Report.**

There are four lobes in the aquifer – each unique and for management purposes can be considered separate units. Shallow Cardinal Lake and adjacent wetlands are considered part of the aquifer system.

The aquifer is an excellent and reliable source of groundwater. The average capacity of the aquifer is 1,342 gallons of water per hour per square mile of aquifer (32,208 gallons per day, per square mile). As the aquifer is approximately 182 square miles, the potential yield is 5.8 million gallons of water per day.

The Earth Sciences Division of PFRA, Regina, developed the report commencing in September 1996, with a Final report issued in April, 1998.

In 1999 the six municipalities agreed to an annual contribution of fifty cents per capita for their residents located within the Aquifer nodes to fund the operation of the committee. This raised about \$3,400 and with financial assistance from PFRA, Alberta Agriculture and Alberta Environment, 200 copies of the report were published. At this time in 2000, the Committee was incorporated as a non-profit Society to provide legal identity with the six municipalities each having one elected official as a voting member, secretarial support to be provided by the Chairman's municipality.

Technical support continues from PFRA, Alberta Agriculture and Alberta Environment and from municipal staff.

The report identified several areas to consider when developing an aquifer management plan:

1. Public Participation & Awareness program
2. Existing Data Base
3. Delineation of Well Capture Zones
4. Aquifer vulnerability mapping
5. Ongoing monitoring
6. A planning and review process
7. Aquifer Management Policies

## **1. Public Participation and Awareness Program**

The Grimshaw Gravels Aquifer Management Advisory Association has utilized several procedures to raise public awareness:

- a. Developed a display board which is used at local trade shows
  - o Display material includes fact sheets and pamphlets and the "Water Wells That Last for Generations" workbook.
  - o Prizes at trade shows include water saver units for toilets and promotional items.
- b. Prepared signs, which were installed along highways, that noted the location of the aquifer nodes.
- c. Prepared weather proof maps of the aquifer, which were installed at community wells, the local U.F.A. Store and two local museums.
- d. Linked to the Technical report on PFRA Website through the Town of Grimshaw website
- e. Education of the Grades 3 to 6 students through a "Trade Show" format held at the Fairview College for two years. This was organized by the Agricultural Fieldman in conjunction with her Ag in the Classroom

These community involvement ideas have raised awareness within the region to the point that many newcomers to the area visit the local municipal offices to enquire about the aquifer and how it relates to their newly purchased property.

The Association has attempted to demonstrate proper well abandonment procedures; however, due to costs have not been able to meet this goal. The

Association Board will continue to lobby for a Provincial Program in this area.

## **2. Existing Data Base**

The existing database remains at Alberta Environment.

To date, this database is not updated or used at the local level to make water management decisions.

## **3. Delineation of Well Capture Zones**

Some municipalities are measuring water well level elevations on a consistent basis while others are unable to do so due to pitless adapters.

There has been minimal success in having local residents measure water well levels although two measuring units were purchased and are available.

Information on recharge areas is limited at this time.

## **4. Aquifer Vulnerability Mapping**

The drift cover map in the report indicates areas where the aquifer is most sensitive to contamination; however, the additional information on the physical characteristics of drift cover such as permeability and fracturing, has not been gathered.

The well capture zones and the drift cover maps have been used to prepare amendments to the Municipal District of Peace General Municipal Plan and Land Use Bylaw to direct C.F.O.s away from sensitive areas.

## **5. Ongoing Monitoring**

There are some existing monitoring wells. As stated previously, the Association has not been able to enlist the help of sufficient residents to measure water well levels to the point that data is useful.

Water samples for water quality are done for all community wells as well as analysis for some minerals and nitrates. Alberta Environment has tested some of the observation wells, which indicates some small increase in nitrate levels.

## **6. Planning and Review Process**

To date, the Association has not developed a protocol for ongoing assessment of water quality and quantity in the aquifer.

## **7. Aquifer Management Policies**

The Association has not developed any aquifer management policies, other than to ask each municipality to add the location map of the Grimshaw Gravels Aquifer to their Land Use Bylaw map for awareness when dealing with development proposals.

## Conclusions

- Successful in raising awareness of our valuable water resource, the Grimshaw Gravels Aquifer, in the region's population

## Future Challenges

- Development of a working plan and a relationship with gravel pit owners to ensure they are aware of and are willing to comply with procedures to prevent contamination of the aquifer through their operations.
- Development of a working plan and procedures to ensure contaminants do not enter the aquifer through borrow pits during and following their use.
- Ensure that the oil and gas drilling and seismic operations will not contaminate the aquifer through their actions.
- Ensure that the agricultural producers do not develop new drainage wells and that existing drainage wells are sealed off.
- Ensure that several wells in the area are tested at least every 2 years to determine changes in contaminate levels.
- Develop aquifer management policies and protocols and have them adopted by the Municipalities for implementation.

Municipal District of Peace No. 135  
P.O. Box 34  
5239 – 52 Avenue  
Berwyn, Alberta, Canada T0H 0E0

Email: [info@mdpeace.com](mailto:info@mdpeace.com)  
Phone: [780-338-3845](tel:780-338-3845)  
Secondary: [780-338-3846](tel:780-338-3846)  
Fax: 780-338-2222

# Clear Hills County

## Request For Decision (RFD)

Meeting:	<b>Agricultural Service Board</b>
Meeting Date:	March 9, 2015
Originated By:	Aaron Zylstra, Agricultural Fieldman
Title:	<b>2015 AGRICULTURAL SERVICE BOARD SUMMER TOUR</b>
File:	63-10-02

### DESCRIPTION:

The Agricultural Service Board Summer Tour will be held in Grande Prairie, Alberta on July 14-17, 2015.

### BACKGROUND:

C787-14(11/12/14) RESOLUTION by Councillor Fletcher to include \$500.00 (five hundred dollars) in the 2015 Operating Budget as sponsorship for the 2015 Provincial Agricultural Service Board Summer Tour on July 14-17th, 2015 in the County of Grande Prairie. CARRIED.

Registration fees are \$475 with additional fees ranging from \$25 to \$100 for banquet tickets, country fair concert, golf tournament and tours.

### ATTACHMENTS:

- 2015 Provincial Agricultural Service Board Summer Tour registration information.

### OPTIONS:

1. Approve the attendance of...
2. Accept for information

### RECOMMENDED ACTION:

RESOLUTION by \_\_\_\_\_ that this Agricultural Service Board...

Initials show support - Reviewed by:	Manager: <i>abj</i>	AF: <i>AF</i>
--------------------------------------	---------------------	---------------

**2015 ASB SUMMER TOUR**



**2015 Provincial  
Agricultural Service Board  
Summer Tour  
July 14 – 17, 2015**



*Back to our Roots*



**Registration Information**

# Greetings from the ASB

On behalf of the Agricultural Services Board, we hope you are able to join us for the 2015 ASB Summer Tour in the Grande Prairie region. As a longtime resident, I have witnessed the County of Grande Prairie and region go through a lot of changes over the past few decades. This exciting growth we have experienced has enabled the County of Grande Prairie to provide more amenities, services, programs and opportunities to residents.

While this growth and prosperity allows us to enjoy these fruits of our labour, we will always remember that it began when the pioneers and early entrepreneurs settled in this area and brought success and prosperity through agriculture on our rich prairie land. This leads into our theme "Back to Our Roots" for the 2015 ASB Summer Tour.

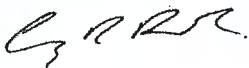
During this Tour, the County of Grande Prairie will show you how it keeps the Agriculture sector strong in our communities. You will notice that we have a well-balanced blend where we are progressive while taking great pride in our heritage. You will get to see the innovation practiced in farming and agriculture throughout the County of Grande Prairie including tours to our Biobed; invasive species demonstration area; crop trial area; the National Bee Diagnostic Centre; and much more.

We will also be venturing out to many historical sites such as the South Peace Centennial Museum and the Philip J. Currie Museum that help tell the story of our rich rural heritage along with pre-historic times when the dinosaurs roamed the Peace Country.

There are several other activities planned that strike the interests of everyone and keep everyone on their toes including a Youth Tour.

Take advantage of this trip to the Peace Country and see what we have to offer. If time permits, be sure to enjoy our long, summer days whether it's a trek out to one of our beautiful sites such as Saskatoon Mountain Park, Kleskun Hills Park, Pipestone Creek Campground, or Red Willow Park. The remainder of this registration package provides a list of several other enticing events, activities and attractions such as rodeos and festivals taking place throughout our communities before, during and after the Tour.

The ASB Board, County of Grande Prairie staff, many contributors and volunteers are working hard to ensure the 2015 Summer Tour is a resounding success full of learning experiences, networking opportunities, and a variety of entertainment. We hope to see you all, familiar and new faces at the Tour this summer.



Corey Beck

ASB Chair



Thank-you to our sponsors to date:





# Greetings from the County of Grande Prairie

On behalf of the County of Grande Prairie Council and residents, we look forward to welcoming all 2015 Agricultural Services Board (ASB) delegates and guests to the Grande Prairie Region. It is such a great pleasure to be the host community for the 2015 ASB Summer Tour.

Over the past decade, the County of Grande Prairie has faced tremendous growth due to successes in many economic industries including Oil & Gas, Forestry, Construction and Agriculture. Amidst this growth, we maintained our strong rural traditions and values that we were founded upon all while seizing opportunities that drive progress, diversity and long-term sustainability.

We are truly excited to show you around our community. During your time here, you will be able to witness firsthand how busy and vibrant our region is. While our region offers big city amenities, services and opportunities, you will sense our small town friendliness and feel. The theme of this year's tour is "Back to Our Roots," where we will showcase our agricultural diversity and innovation, while honouring and reflecting on the pioneers who paved the way.

You will also have the opportunity to visit other unique sites that show the broad diversity of economy in the County including the Evergreen Centre for Resource Excellence & Innovation; Weyerhaeuser Mill; Natural Gas Processing Plant; Broken Tine Orchard; and the many local stores and restaurants sprouted throughout the County and City of Grande Prairie.

You will get to go back in time and experience the region's heritage during our visit to the South Peace Centennial Museum. For those interested in going even further back in time, you will have the opportunity to visit the Pipestone Creek Dinosaur Bonebed – one of the world's most dense areas containing dinosaur bones dating back to over 365 million years old, and the Philip J. Currie Dinosaur Museum which will uncover, display and tell the story of these ancient riches.

For those who are interested in sports and recreation activities, you will have the opportunity to go on an exciting jet boat trip of the Wapiti River; and golf your heart out at the beautiful Dunes Golf & Winter Club.

We highly encourage you to venture out this way, extend your stay in the region, and do some of your own exploring outside of the Tour. There are many attractions worth visiting. We hope you are able to attend our Tour and partake in the wonderful attractions our region offers during your stay.



Reeve Leanne Beaupre  
County of Grande Prairie



Thank-you to our sponsors to date:



**NORTHERN SUNRISE  
COUNTY**

**Main Venue**

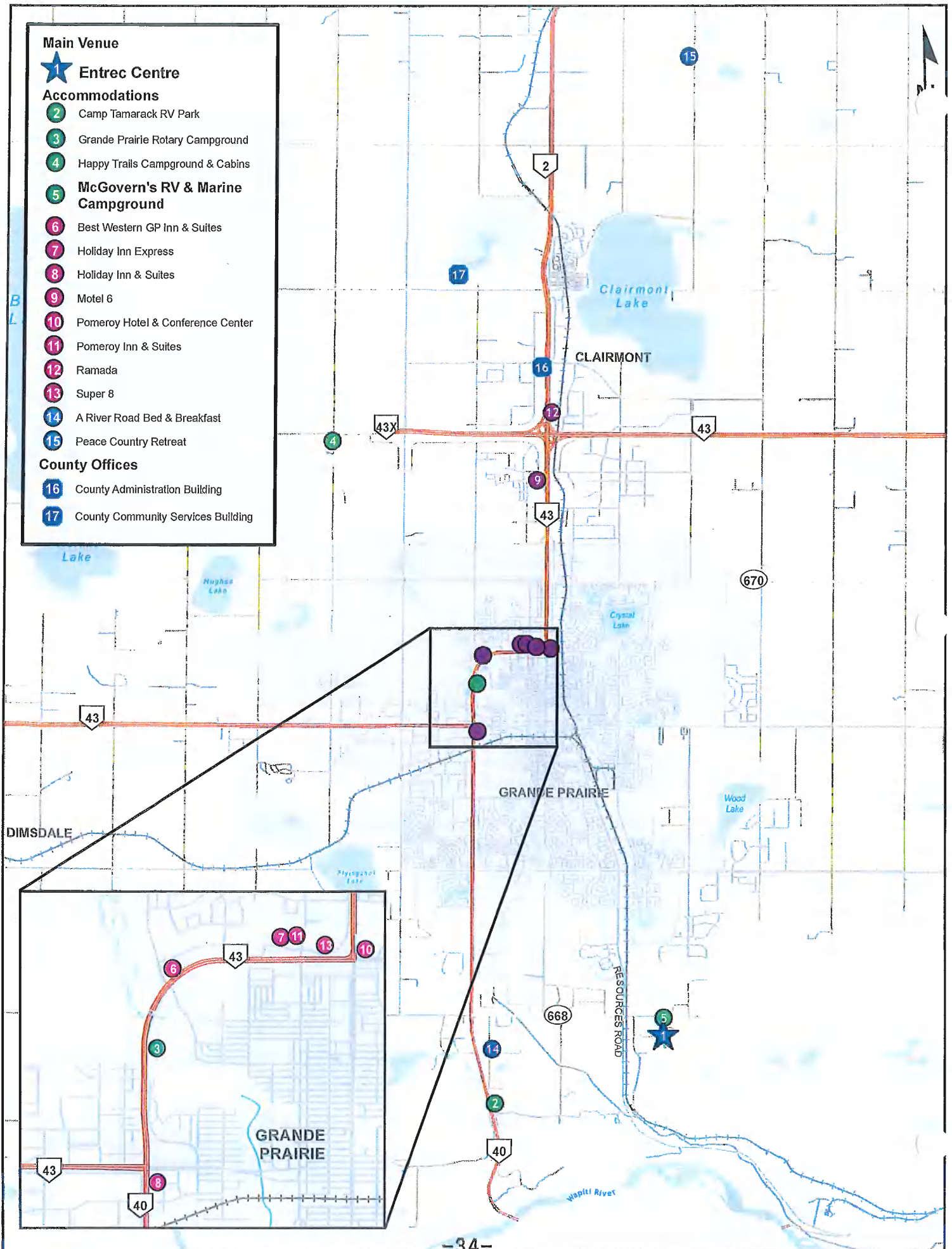
**★ Entrec Centre**

**Accommodations**

- 2** Camp Tamarack RV Park
- 3** Grande Prairie Rotary Campground
- 4** Happy Trails Campground & Cabins
- 5** **McGovern's RV & Marine Campground**
- 6** Best Western GP Inn & Suites
- 7** Holiday Inn Express
- 8** Holiday Inn & Suites
- 9** Motel 6
- 10** Pomeroy Hotel & Conference Center
- 11** Pomeroy Inn & Suites
- 12** Ramada
- 13** Super 8
- 14** A River Road Bed & Breakfast
- 15** Peace Country Retreat

**County Offices**

- 16** County Administration Building
- 17** County Community Services Building



# Welcoming Events

## **The Dunes Golf & Winter Club Golf Tournament**

Tuesday, July 14, 2015 starting at 11:00 a.m. Registration at 10:00 a.m. Located on Resources Road, 4 km south of Grande Prairie city limits, spend the day on lush fairways complemented by immaculate greens that offer stunning views. Cost: \$85 per participant  
Please provide your own transportation.



## **Grande Prairie River Rats River Boat Tour**

Tuesday, July 14, 2015 from 10:00 a.m. – 4:00 p.m.  
Suitable for the hale, hearty and adventurous! Enjoy an action filled day on the Wapiti and Smoky Rivers with a scenic trip to the remote River Rat cabin. Cost: \$100 per participant  
Busing from the Entrec Centre will be provided.



## **National Bee Diagnostic Centre**

Tuesday, July 14, 2015 from 1:00 p.m. – 3:00 p.m.  
Come and tour this state-of-the-art facility which is Canada's first and only comprehensive laboratory providing diagnostic services for the honey industry including pests, diseases and parasites of honeybees. Cost: \$25 per participant  
Busing from Entrec Centre will be provided.



## **Weyerhaeuser Pulp Mill Tour**

Tuesday, July 14, 2015 from 1:00 p.m. – 3:30 p.m.  
Come and tour Weyerhaeuser's Grande Prairie Pulp Mill, located on Resources Road 10 km south of Grande Prairie. See how they process softwood into kraft pulp for the tissue towel market. Cost: \$25 per participant  
Busing from the Entrec Centre will be provided.



## **Natural Gas Processing Facility**

Tuesday, July 14, 2015 from 1:00 p.m. – 3:30 p.m.  
Come and tour one of the largest producers and operators in the Deep Basin. The Elmworth Processing Plant, which has been in operation for over 35 years, is the largest ConocoPhillips sweet gas facility in Canada, with a capacity of 12,735 cubic metres per day. Cost: \$25 per participant  
Busing from Entrec Centre will be provided.



## **Broken Tine Orchard Haskap Berry Orchard**

Tuesday, July 14, 2015 from 11:00 a.m. – 2:00 p.m.  
The orchard is part of a fourth generation farm that grows canola, wheat and barley. The Alde's take pride in locally grown food and sustainable agricultural practices. Come and sample berries from a northern orchard! Cost: \$25 per participant  
Busing and bag lunch from Entrec Centre will be provided.



Limited seating available for all events, please pre-register by June 15, 2015.

\*Closed toe footwear is required for all Welcome Events.

# Tour Information

## ALL TOURS

Our tours kick off on Wednesday, July 15, 2015 with a hot breakfast from 7:00 a.m. – 8:00 a.m. at the Entrec Centre at Evergreen Park. The badge identification received at the Tuesday registration will get you into the tour sites as well as all special events. Snack and beverage breaks will be provided mid-morning and mid-afternoon along the route. Please note, some listed tours may be subject to change.

## EVENING EVENTS

**Welcome Gala** – Tuesday, July 14, 2015 from 7:00 p.m. – 10:00 p.m.

“Flavours of the Peace” evening features local produce and merchandise. There’ll be appetizers to try, a farmers market to shop at and sponsor booths. Enjoy the opening “Dance of the Champions” performance by the Bluebird Native Dance Troupe.

**Country Carnival & Outdoor Concert** – Wednesday, July 15, 2015 from 5:00 p.m. – 10:00 p.m.

Come enjoy an outdoor pig roast and chicken barbecue. The carnival features roving entertainment, wagon rides and a performance by local Country artist, Tenille.

**Banquet Evening** – Thursday July 16, 2015 at 6:00 p.m. – 10:00 p.m.

The formal banquet at the Entrec Centre will feature a “Round the Campfire” theme. Hugh McLennan and the Western Spirit Band, Bluebird Dance Troupe, and the Metis Jiggers will perform.



# Delegate Tours

## WEST DELEGATE TOURS – July 15 & 16, 2015

### Problem Wildlife Control Initiatives

- Increase awareness of problem wildlife issues within the County.
- Best practices and techniques for predator control.
- Techniques for dam removal with explosion demonstration.



### Water Hub Resource (WHR) Encana

- Leading example of industry water management technologies.
- Surface water use reduction.
- Transport water through a pipeline network to lined pits.



### South Peace Centennial Museum

- Preserving the past for the future.
- Lunch at the largest agricultural museum in the Peace Region.
- Walk the grounds, admire the gardens, and browse the buildings.

### Beaverlodge Research Farm

- Specializes in research and development of technologies for improved agricultural production systems.
- Presentations will include Apiculture, Forage Seed Production & Integrated Pest Management (IPM) Programs.
- Leave with an informed perspective of production issues and how northern research continues to affect prairie-wide agriculture.



## Centre for Resource Excellence & Innovation

- This guided tour at Evergreen Park was developed as a collaborative effort between industry and government to showcase innovative resource solutions and inspire others to implement these best practices. (eg: pipeline and water crossing strategies).
- Government and industry can, research, develop and test solutions that contribute to feasible economic growth & environmental sustainability.



## EAST DELEGATE TOURS – July 15 & 16, 2015

### County Infrastructure

- Crosslink County Sportsplex
- Administration Building
- Community Services Building
  - Bio-bed
  - Invasive Species demonstration Area



### Viterra

- Tour Viterra's high throughput terminal near Sexsmith, the largest grain handler in Canada with historic formative roots in prairie grain-handling.
- Stores 30,000 tonnes of grain, manages 104 rail cars in one loading.
- Learn how Viterra efficiently handles, processes, distributes and transport grains and oilseeds.



### Philip J. Currie Dinosaur Museum

- Get a sneak peek of the soon-to-be opened Philip J. Currie Dinosaur Museum, a research and education centre named after Canada's most prominent paleontologist.
- PCL Construction received the 2014 Alberta Construction Award for the Philip J. Currie Museum.
- Teeple Architect received recognition when the museum was listed in Azure magazine, as one of the top 10 architectural projects of 2014.
- Globe and Mail has listed Wembley, where the dinosaur museum is located, as one of "2015's Top 10 destinations" for suggested world travel.



### Kleskun Hills Bison Ranch

- Tour this well laid out cow/calf facility where the bison have the rare opportunity to roam in native grassland.
- This 5,000 acre ranch is home to 1,000 head of bison whose rangeland borders the Kleskun Hills Park, a provincial natural area.



# Partner Tours

## WEST PARTNER TOUR – Wednesday, July 15, 2015

**County Gardens Tour** - Take advantage of this opportunity to wander inside three private country gardens. Prepare to be impressed and inspired!

**Norris Garden** - Stroll about this warm and welcoming site featuring a stunning country garden full of vibrant colours and charming crafted art pieces including an arched footbridge over a pond with fountain. It's a favourite when the County takes residents on tour.

**Bildson Garden** - A stunning Wapiti River vista! You will be intrigued by the unique topography and sandy soil type. This yard has been strategically created to enhance a microclimate favourable to many diverse plantings. Edible landscaping thrives.

**Kenney Garden** - Nestled in the trees at the end of a winding driveway, this restored Northern Alberta Railway (NAR) train station has been converted into a charming old-fashioned farm house. Every nook and cranny features an element of whimsy, simplicity and creativity.

**Fairy Garden Workshop at Dunvegan Gardens & The Old Barn Store and Tea House** - Learn how to make your own fairy garden at this family owned greenhouse and business. Browse the Old Barn Store and Tea House and enjoy quality products, and friendly, personalized service.



## EAST PARTNER TOUR – Thursday, July 16, 2015

**Back yard Alpacas** - The Pellerin Family welcomes you to their back yard. They are active alpaca owners who take pride in bringing the best genetics and fleece to market. From showing to shearing to after sale alpaca products, they are happy to share the alpaca experience.

**Village of Sorkenville** - With a strong passion to preserve Peace Country history, Orval and Betty Sorken welcome you to Sorkenville which borders the Teepee Creek Stampede grounds. Wander through the historical buildings, take a wagon ride, and watch heritage food demonstrations hosted by a food blogger and local food editor.



# Youth Tours

## EAST YOUTH TOUR – Wednesday, July 15, 2015

### Equine Facilitated Learning & Wellness (EFLW) Peace Area Riding for the Disabled (P.A.R.D.S.)

Groom and saddle your own horse and go for a trail ride in the pines. Experience the brand new 40,000 square foot arena and barn with a therapeutic centre, unique to our community at Evergreen Park.



### Camp Tamarack Wilderness Teepee Site

Share a teaching around a wilderness teepee with an Elder. Try some tasty bannock cooked over hot coals and build awareness and interest in Aboriginal culture.



### Crosslink County Sportsplex

This state-of-the-art recreation complex is home for arena sports, outdoor sports and an indoor track. Join us in a soccer clinic at the Fieldhouse. Have some fun while sharpening your skills with assistant coach from the Grande Prairie Regional College (GPRC) Wolves soccer team.



### Sexsmith Spray Park

Spray Parks are sprouting up all over! The best way to cool off at the end of the day! Have some summer fun!



## WEST YOUTH TOUR – Thursday, July 16, 2015

### Grande Prairie & Area Safe Communities

Youth are given a chance to practice farm safety skills in the M4 Farm Safety program - Machines, Mammals, Mud & More. The program includes six hands on safety stations: chemicals, grain, small machinery, sun, dugout, and animals.



### Pipestone Creek Park Dinosaur Bone Bed

Hike 2.5 km to the world famous *Pachyrhinosaurus lakustai* bone bed. See casts and real dinosaur bones, examine fossils and learn the different types of dinosaurs found in the Peace Country.



### Philip J. Currie Dinosaur Museum

Get a sneak-peek of the new world class Dinosaur Museum to open in the fall of 2015 and meet with a paleontologist!

# Schedule at a Glance



TUESDAY, JULY 14	WEDNESDAY, JULY 15	THURSDAY, JULY 16	FRIDAY, JULY 17
<b>Golf Tournament</b> 10:00 a.m.	<b>Breakfast</b> 7:00 a.m. - 8:00 a.m.	<b>Breakfast</b> 7:00 a.m. - 8:00 a.m.	<b>Breakfast</b> 7:00 a.m. - 8:30 a.m.
<b>WELCOME EVENTS</b> (Optional)	<b>DELEGATES EAST &amp; WEST TOURS</b>	<b>DELEGATES EAST &amp; WEST TOURS</b>	Explore the Peace Region!
River Boat Tour 10:00 a.m. - 4:00 p.m.	8:15 a.m. - 4:00 p.m.	8:15 a.m. - 4:00 p.m.	
National Bee Diagnostic Centre 1:00 p.m. - 3:30 p.m.	<b>PARTNERS WEST TOUR</b>	<b>PARTNERS EAST TOUR</b>	
Weyerhaeuser Mill Tour 1:00 p.m. - 3:30 p.m.	8:30 a.m. - 3:00 p.m.	8:30 a.m. - 4:00 p.m.	
Natural Gas Plant 1:00 p.m. - 3:30 p.m.	<b>YOUTH EAST TOUR</b>	<b>YOUTH WEST TOUR</b>	
Broken Tine Orchard 11:00 a.m. - 2:00 p.m.	8:30 a.m. - 4:00 p.m.	8:30 a.m. - 4:00 p.m.	
<b>REGISTRATION</b> 4:00 p.m. - 6:00 p.m.	<b>COUNTRY CARNIVAL &amp; OUTDOOR CONCERT</b>	<b>BANQUET</b> 6:30 p.m. - 10:00 p.m.	
<b>WELCOME GALA</b> 7:00 p.m. - 10:00 p.m. Entrec Centre, Evergreen Park	6:00 p.m. - 10:00 p.m. Evergreen Park, Parking Lot A	Cocktails 6:00 p.m. Entrec Centre, Evergreen Park	

## Accommodations

<p><b>Special rate hotels:</b> When booking hotels ask for the <b>2015 ASB</b> rate.</p> <p>Ramada 7201 – 99<sup>th</sup> St, Clairmont (Hwy 2 &amp; Hwy 43) 780-814-7448</p> <p>Motel 6 15402 – 101 St, Grande Prairie 780-830-7744</p> <p>Holiday Inn Hotel &amp; Suites 9816 – 107<sup>th</sup> St, Grande Prairie 780-402-6886 (Special rate for ASB guests at Mirage Holistic Spa)</p> <p>Best Western GP Inn &amp; Suites 10745 – 117<sup>th</sup> Ave, Grande Prairie 780-402-2378</p> <p>Super 8 10050 – 115<sup>th</sup> Ave, Grande Prairie 780-532-8288</p> <p>Pomeroy Hotel &amp; Conference Centre 11633 – 100<sup>th</sup> St, Grande Prairie 780-532-5221</p> <p>Holiday Inn Express 10226 – 117<sup>th</sup> Ave, Grande Prairie 780-814-9446</p>	<p>Pomeroy Inn &amp; Suites 11710 – 102 St, Grande Prairie 780-831-2999</p> <p>*Mention ASB Rate at L Spa &amp; Wellness Centre for discounted prices. Contact 780-830-0302 for information.</p> <p><b>Bed &amp; Breakfast:</b> A River Road Bed &amp; Breakfast 780-831-4353</p> <p>Peace Country Retreat 780-567-2226</p> <p><b>Grande Prairie &amp; area campgrounds:</b> McGovern's RV &amp; Marine (at venue) 780-532-4568 Happy Trails Campground &amp; Cabins 780-814-6919 GP Rotary Campground 780-532-1137 Camp Tamarack RV Park 780-532-9998</p>	<p><b>County of Grande Prairie campgrounds:</b> Pipestone Creek Campground Located on the Wapiti River, 16 km south of Wembley 780-766-2391</p> <p>Bear Lake Campground Located on the north shore of Bear Lake, 23 km northeast of Grande Prairie 780-567-4105</p> <p>Kleskun Hill Campground Located off Hwy 43, 15 minutes east of Grande Prairie 780-567-3685</p> <p>Hommy Campground Located on the north bank of the Beaverlodge River, near Beaverlodge 780-354-8039</p>
---	--	---

### Come early, stay late:

July 9 - 12, 2015: 99<sup>th</sup> Annual Teepee Creek Stampede. For more information visit [www.tpstampede.ca](http://www.tpstampede.ca).

July 17 - 19, 2015: 15<sup>th</sup> Annual GP International Street. For more information visit [www.gpstreefest.com](http://www.gpstreefest.com).

July 17 - 19, 2015: Grande Prairie East Coast Garden Party. For more information visit [www.eastcoastgardenparty.com](http://www.eastcoastgardenparty.com).

July 19 - 20, 2015: Pioneer Days South Peace Centennial Museum Performers Festival. For more information visit [www.spcm.ca](http://www.spcm.ca).



# Registration Options

## OPTION 1 (MAIL)

Mail or courier the enclosed registration form to:  
Agricultural Service Board  
County of Grande Prairie  
10001 – 84<sup>th</sup> Avenue  
Clairmont, Alberta T0W 0W0

## OPTION 2 (EMAIL)

Email scanned copy of the registration form to:  
[asbtour2015@countygp.ab.ca](mailto:asbtour2015@countygp.ab.ca)

## OPTION 3 (FAX)

Faxed the enclosed registration form to:  
780-567-5589

**Registration deadline is June 15<sup>th</sup>, 2015.** Please pre-register for the golf and welcoming events by June 15<sup>th</sup>, 2015. Registrations received after the deadline will be subjected to a late registration fee of an additional \$50.00/registrant.

Cheques should be made payable to: County of Grande Prairie

**Participants will not be registered until full payment is received.**

## Registration Check-in Time

The registration desk will be located at the Evergreen Park Entrec Centre in the County of Grande Prairie.

The registration desk will be open:

- Tuesday, July 14<sup>th</sup> from 4:00 p.m. – 8:00 p.m.
- Wednesday, July 15<sup>th</sup> from 7:00 a.m. – 9:00 a.m.

Watch for ASB discounts and a coupon booklet in your registration package!

**Cancellations** – Cancellations up until June 15 will be fully refunded. All refund requests made between June 15 and July 1 will be reimbursed at 50 per cent. No tour refund requests will be accepted after July 1, 2015.

## Shuttle Services

Morning and afternoon shuttle services to and from selected accommodations to the Entrec Centre will be offered daily.

Evening shuttle services to and from selected accommodations to the Country Carnival at the Entrec Centre will be available.

Evening shuttle services to and from your selected accommodations to the Formal Banquet at the Entrec Centre will be available. Watch the ASB website for shuttle scheduling and locations.

[www.asbtour2015.ca](http://www.asbtour2015.ca)





## 2015 PROVINCIAL AGRICULTURAL SERVICE BOARD TOUR (JULY 14 – 17, 2015) REGISTRATION FORM – COUNTY OF GRANDE PRAIRIE



Municipality: \_\_\_\_\_  
 Contact Name: \_\_\_\_\_  
 Address: \_\_\_\_\_  
 City/Town: \_\_\_\_\_ Postal code: \_\_\_\_\_  
 Phone: \_\_\_\_\_ Fax: \_\_\_\_\_  
 Email: \_\_\_\_\_

- ❖ Registration deadline is June 15, 2015
- ❖ A late registration fee of \$50 per registrant will be applied to registrations received after June 15, 2015.
- ❖ Cheques should be made payable to: County of Grande Prairie
- ❖ Participants will not be registered until full payment is received
- ❖ You **must** pre-register for Welcoming Tours due to limited space available.

Option 1 – Mail in registrations to: **Option 2 – Email to: [asbtour2015@countyp.ab.ca](mailto:asbtour2015@countyp.ab.ca)**  
 County of Grande Prairie  
 2015 ASB Summer Tour  
 10001 - 84 Avenue  
 Clairmont, AB T0H 0W0

**Option 3 – Fax to: 780-567-5589**

Name of Registrant	Tour:		Additional Banquet Tickets		Additional Country Fair Concert Tickets		Golf Tournament		Welcome Tour Option 1		Welcome Tour Option 2		Welcome Tour Option 3		Welcome Tour Option 4		Welcome Tour Option 5		Late fee	TOTAL Per Registrant	
	Delegate (\$475)	Partner (P) \$300	Youth (Y) \$75(50% discount)	Meals (B) \$50	D, P or Y	#	Total cost	Monday July 13 <sup>th</sup>	\$85 per participant	(see notes 4 & 5)	Rental Equip.	Ability Level	Total cost	Bees	Diagnostics	Weyernauser Tour	Natural Gas Plant	Haskap Berry Orchard			Max. 50
TOTAL: Payable to the County of Grande Prairie																					
<b>SPECIAL DIETARY REQUIREMENTS (Allergies, etc) please specify what and for whom:</b>																					

GST is included in all registration amounts. Please include registration form with payment. No invoice will be issued. GST Registration No: R106988793

**NOTES:**

1. **Youth Tour** – Tour planned for children 6-15. Registrations will not be accepted for children under the age of six. **Complete and attach the 2015 ASB Tour Emergency Contact and Waiver Form.**
2. **Meals** – Breakfast only on Wednesday through to Friday morning (for family members not attending tours).
3. **Banquet/Concert tickets** – One ticket is included with each registration. Indicate if additional tickets are required.
4. **Golfing Ability** – Indicate golfing ability: Low Handicap (LH), High Handicap (HH), Beginner (B), Intermediate (I), Advanced (A)
5. **Golf Club rental** – Indicate if you require golf club rentals (at your expense) with an R.
6. **Welcome Tours** – Due to limited spaces we are offering several tours. If you are participating in the golf tournament, this will not allow you to take part in the other welcoming tours.

**Collection and Use of Personal Information**

Personal information is collected in accordance with Section 3 of the Municipal Government Act and Section 33c of the Freedom of Information and Privacy Act (FOIP). It will be used to process your registration, notify you of tour cancellations or changes and support your participation in this tour. If you have any questions about the collection and use of the information, contact the Ag Tour Coordinator at 780-882-5941.

**Questions?**

Call 780-532-9727, email: [asbtour2015@countyp.ab.ca](mailto:asbtour2015@countyp.ab.ca), or visit us at [www.asbtour2015.ca](http://www.asbtour2015.ca)

# Clear Hills County

## Request For Decision (RFD)

Meeting:	Agricultural Service Board Meeting
Meeting Date:	March 9, 2015
Originated By:	Audrey Bjorklund, Community Development Manager
Title:	<b>CDM REPORT</b>
File:	63-02-02

**DESCRIPTION:**

At this time the Community Development Manager will have an opportunity to report on Community Development topics.

**BACKGROUND:**

**Agriculture:** Attached are the letters from the Federal Agriculture & Agri-Food Minister and Alberta Agriculture and Rural Development Minister responding to the County's letter of concern regarding the lack of inspectors for fertilizer efficacy and quality. Also attached is a copy of the original letter that was sent to the Minister. This letter was also sent to the National Manager of Fertilizer Safety, Ewa Madley.

**Agriculture: Pest & Predation Control**

<b>Beavers:</b> to March 2,	2015	39 tails	\$1,170
	2014	188	\$5,460
<b>Wolves:</b> to March 2,	2015	9 wolves	\$ 2,250
	2014	58	\$14,500
	2013	78	\$19,500
	2012	118	\$49,550
	2011	93	\$44,750
	2010	46	\$22,250

**ATTACHMENTS:**

- Minister Ritz response letter re: fertilizer inspectors
- Minister Olson response letter re: fertilizer inspectors
- Original letter to Minister Ritz re: fertilizer inspectors

**RECOMMENDATION:**

RESOLUTION by \_\_\_\_\_ to accept the Community Development Manager's report to March 9, 2015 as presented.

**Initials show support - Reviewed by:**

**Manager:**

*ABj* • *AF:* *AK*



ALBERTA  
AGRICULTURE AND RURAL DEVELOPMENT

Office of the Minister  
MLA, Wetaskiwin-Camrose

RECEIVED

JAN 28 2015

CLEAR HILLS COUNTY

Mr. Charlie Johnson  
Reeve, Clear Hills County  
PO Box 240  
Worsley, AB T5K 2B6

Dear Mr. Johnson:

*Charlie*

Thank you for your November 6, 2014, letter regarding federal fertilizer efficacy inspectors. I appreciate the opportunity to respond.

As you may be aware, the Canadian Food Inspection Agency (CFIA) released an Industry Notice on May 8, 2013, advising of changes made to the federal *Fertilizer Regulations*. The primary change was that the CFIA is no longer regulating the efficacy and quality of fertilizer products. Instead, the CFIA is focusing on doing safety assessments to examine all ingredients in fertilizers and supplements to ensure their safety for humans, plants, animals, and the environment; and also verifying that fertilizer products are properly labelled to avoid product misrepresentation in the marketplace.

This means, of course, that the responsibility of verifying the efficacy and quality of fertilizer has been transferred to the manufacturers and suppliers. As stated in the Notice, this change is intended to strengthen industry's leadership role in quality assurance and verification, and provide industry with greater flexibility, reduced costs, and less red tape. The Government of Alberta has accepted the change in legislation implemented by the CFIA.

The Canadian Fertilizer Institute (CFI) is considering what mechanisms can be put in place across Canada that will enable fertilizer companies to self-regulate, ensuring producers get meaningful information to determine the products that best meet their individual needs. To help the agriculture sector utilize fertilizers properly, the federal Agriculture Greenhouse Gas Program provided \$700,000 over four years (ending in March 2016) to the CFI. The funds were provided for the promotion of 4R Nutrient Stewardship (i.e. Right product, Right rate, Right time, and Right placement) across Canada.

.../2

*Alberta*

Mr. Charlie Johnson  
Page Two

RECEIVED  
JAN 28 2015  
CLEAR HILLS COUNTY

In March 2013, Alberta's Climate Change Emissions Management Corporation also provided one-time funding of \$200,000 to the CFI for intensive 4R extension and capacity building, including orientation to Alberta's approved Nitrous-oxide Emission Reduction Protocol (NERP). Agriculture and Rural Development (ARD) continues to encourage producers to explore the use of NERP (more information on NERP is available at [www.agric.gov.ab.ca](http://www.agric.gov.ab.ca)). In the interim, ARD continues to support the efforts of the CFI as they work with the fertilizer industry to adjust to this new way of doing business.

Thank you again for taking the time to write. I hope the above information will help provides some insights that your Agriculture Service Board may use to help producers in the region move forward in this less regulated environment.

Sincerely,



Verlyn Olson, Q.C.  
Minister

cc: Mr. Chris Warkentin, Member of Parliament for Peace River  
Mr. Hector Goudreau, MLA, Dunvegan-Central Peace-Notley

Minister  
of Agriculture and  
Agri-Food



Ministre  
de l'Agriculture et de  
l'Agroalimentaire

Ottawa, Canada K1A 0C5

RECEIVED

FEB 26 2015

CLEAR HILLS COUNTY

FEB 19 2015

Quote: 208217

Mr. Charlie Johnson  
Reeve  
Clear Hills County  
Box 240  
Worsley, Alberta T0H 3W0


Dear Mr. Johnson:

Thank you for your letter in which you express concerns about monitoring and verification of fertilizer efficacy and quality in Alberta and the rest of Canada.

Fertilizers and supplements imported into or sold in Canada are regulated under the *Fertilizers Act* and *Fertilizers Regulations*, which are administered and enforced by the Canadian Food Inspection Agency (CFIA). As of April 2013, the efficacy and quality of fertilizers and supplements are no longer regulated under the *Fertilizers Act* and *Fertilizers Regulations*. The CFIA's fertilizer program is now focused on product safety, including risks to human, plant and animal health and the environment, thus providing Canadian producers with access to safe and innovative agricultural inputs. Marketplace monitoring of fertilizer and supplement quality, including verification of label guarantees, is therefore no longer conducted by the CFIA. As with all products, the manufacturer is responsible to its customers regarding providing quality products that meet customer expectations.

I trust that this information is helpful to you. Again, thank you for writing.

Sincerely,



Gerry Ritz, PC, MP



**CLEAR HILLS COUNTY**

---

File No. 63-10-02

November 6, 2014

Honorable Gerry Ritz  
Minister of Agriculture and Agri Food  
1341 Baseline Road  
Ottawa, ON  
K1A 0C5

**RE: Fertilizer Efficacy Inspectors**

---

Dear Minister Ritz,

At the October 20, 2014 Clear Hills County Agricultural Service Board meeting the Board discussed the April 2013 amendments to the Fertilizer Regulations.

Clear Hills County is concerned with the lack of inspectors for fertilizer efficacy and quality. As you know fertilizer is integral to current farming operations and producers need to be assured that they are receiving the product that they are paying for. The Board made motion AG131 (10/20/14) recommending the Canadian Food Inspection Agency have no less than one inspector in Alberta testing for fertilizer efficacy and quality.

Clear Hills County is requesting that you appeal to the Federal Ministers responsible for regulating efficacy and quality of fertilizer products used in Alberta and Canada.

We thank you in advance for your consideration on the importance of having adequate inspectors to ensure quality fertilizers are being sold to agricultural producers.

Sincerely,

Charlie Johnson  
Reeve

Cc: Chris Warkentin, MP  
Hector Goudreau, MLA

# Clear Hills County

## Request For Decision (RFD)

Meeting:	<b>Agricultural Service Board Meeting</b>
Meeting Date:	March 9, 2015
Originated By:	Aaron Zylstra, Agricultural Fieldman
Title:	<b>AGRICULTURAL FIELDMAN REPORT</b>
File No:	63-10-02

### DESCRIPTION:

At this time the Agricultural Fieldman will have an opportunity to present his report.

### BACKGROUND / PROPOSAL:

### ATTACHMENTS:

- Agricultural Fieldman Report
  - Meat Inspection Fees Regulation
  - Canadian Food Inspection Agency Response
  - How ALUS Works
- Agricultural Fieldman February Report

### RECOMMENDED ACTION:

RESOLUTION by \_\_\_\_\_ that the Agricultural Service Board accepts the March 9, 2015 Agricultural Fieldman report for information.

Initials show support - Reviewed by: Manager: *ABj* AgFieldman: *AZ*



# Clear Hills County Agricultural Fieldman Report

---

**March, 2015**

**Aaron Zylstra**

## **Pest Control**

- The County is co-hosting a Clubroot, Virulent Blackleg and Fusarium information session in Fairview on March 19<sup>th</sup>.

## **Trade show (April 11<sup>th</sup>)**

- Exhibitor booths booked – 32
- Sponsors – 5 (\$2,950)

## **Rental Program**

- Rock picker repairs are complete
- Grain extractor gearbox has been replaced on warranty
- Rental equipment summary is attached to this report.
- I've ordered some of the parts for the portable toilets trailer.
- Advertising for rental equipment, shop, and yard maintenance person will begin in March for employment beginning in April.
- I am recommending postponing the purchase of a weed incinerator until I've had time to evaluate the effectiveness of renting an incinerator. Purchasing portable weed storage bins will be recommended for the 2016 operating budget.

## **Weed Program**

- Developing a Foxtail Barley control plan for roadsides and right of ways to bring to the 2016 budget discussions in the fall.
- Advertising for summer positions will begin in March.
- 

## **Other Topics**

- The deadline for ordering shelterbelt trees through the County was March 2nd
- The County is co-hosting a shelterbelt tree information session and EFP workshop on March 10<sup>th</sup> at the Eureka River Hall
- **MEAT INSPECTORS RESEARCH** motion AG09(01\12\15)
  - **In Alberta,**
    - Meat Inspection Fees regulation is attached. This specifies the charges imposed on meat facilities for the inspectors.

- Alberta has 150 establishments (65 poultry, 50 red meat, 35 mobile). 60 inspectors service these establishments.
  - The Peace Region has 2 colony slaughter facilities, 1 other red meat facility and 1 more red meat facility opening up soon. There is also 1 mobile facility not regulated, because it's only for custom cutting and on-farm slaughter.
  - All inspectors are appointed by government. Even vets need to be trained to be *meat inspectors*.
  - Every animal is inspected before and after slaughter.
  - Meat can only be sold in Alberta.
- **In Canada,**
  - They are obligated to provide inspectors to every registered establishment.
  - CFIA has not responded to the rest of my questions. Probably due to the most recent case of BSE.
  - Attached is the response I received from CFIA.
- **ALTERNATIVE LAND USE SERVICES (ALUS)**
  - See attached sheet for how the program works.
  - 3 Alberta municipalities are involved in this program. Red Deer County, Parkland County, and County of Vermilion River. I've talked with all of them to see how their municipalities are involved.
  - Parkland County
    - Program started in 2012;
    - All staffing is internal, except for the occasional contract (ie. Environmental Sensitive Areas study)
    - Their annual budget has been \$33,000(excl. staff) to match the Delta Waterfowl contribution
    - They help producers access Growing Forward 2(GF2) grants and other grants available from ESRD and ARD
    - They have 3 projects for 2015, a total of 100ac.
  - Red Deer County
    - Started in 2013; had environmental conservation staff for 7 years prior to being involved with ALUS
    - 2 full time staff in the environmental services
    - Completed an environmental sensitivity study about 10 years ago. It has not been used to develop a strategy.
    - Annual payments are funded from outside agencies, not from the County.
    - In 2013 & 2014, 9 people participated, a total of 185ac.
    - Their partnership advisory committee(PAC) consists of an ALUS representative and their ASB.
    - The County budget is about \$40,000 annually to assist in establishment costs.
  - County of Vermilion River
    - Work with Joan Gabrielson, ALUS representative, to contact and negotiate with producers.

- An annual budget of \$40,000 includes labor, tech support, mapping assistance and financial assistance
- Their PAC consists of producers, Ducks Unlimited, Fish & Wildlife, Cows & Fish, and several others
- The County has 20 projects, a total of 2000ac.



Province of Alberta

## MEAT INSPECTION ACT

# FEES REGULATION

**Alberta Regulation 116/2009**

Extract

© Published by Alberta Queen's Printer

Alberta Queen's Printer  
5<sup>th</sup> Floor, Park Plaza  
10611 - 98 Avenue  
Edmonton, AB T5K 2P7  
Phone: 780-427-4952  
Fax: 780-452-0668

E-mail: [qp@gov.ab.ca](mailto:qp@gov.ab.ca)  
Shop on-line at [www.qp.alberta.ca](http://www.qp.alberta.ca)

### **Copyright and Permission Statement**

Alberta Queen's Printer holds copyright on behalf of the Government of Alberta in right of Her Majesty the Queen for all Government of Alberta legislation. Alberta Queen's Printer permits any person to reproduce Alberta's statutes and regulations without seeking permission and without charge, provided due diligence is exercised to ensure the accuracy of the materials produced, and Crown copyright is acknowledged in the following format:

© Alberta Queen's Printer, 20 \_\_.\*

\*The year of first publication of the legal materials is to be completed.

### **Note**

All persons making use of this document are reminded that it has no legislative sanction. The official Statutes and Regulations should be consulted for all purposes of interpreting and applying the law.

(no amdt)

**ALBERTA REGULATION 116/2009**

**Meat Inspection Act**

**FEES REGULATION**

**Licence fees**

**1** The fees payable on the issue of a licence under section 11 of the *Meat Inspection Regulation* (AR 42/2003) are

- (a) if licensed to operate a meat facility, \$100, and
- (b) if licensed to operate as a mobile butcher, \$100.

**Inspection fees**

**2** The fees payable by the operator of an abattoir for an inspection required under section 4 or 5 of the *Meat Inspection Act* are, per work station where an inspector carries out an inspection, as follows:

- (a) \$40 per hour or part of an hour in the case of an inspection under a special arrangement made under section 41(5) of the *Meat Inspection Regulation* (AR 42/2003);
- (b) in any other case,
  - (i) \$4 per hour or part of an hour for the first 7 1/4 hours in any day, and
  - (ii) \$40 per hour or part of an hour for any time in excess of the first 7 1/4 hours in any day.

## CANADIAN FOOD INSPECTION AGENCY RESPONSE – MARCH 2, 2015

Aaron, here are the answers to your questions,

**1. Could you please tell me the number of slaughter facilities (red meat, poultry) in the Peace Region of Alberta and the Peace River Regional District of BC, that are federally regulated?**

There are no federally inspected red meat or poultry establishments in the regions you've asked about. As previously provided you can view the list of federally and provincially registered establishments on-line at the following link on our external site. <http://www.inspection.gc.ca/active/scripts/meavia/reglist/reglist.asp> There is an option to download the entire list or select by province, location, type of slaughter etc.

**2. Could you please tell me the number of inspectors that are available for inspecting slaughter facilities and slaughtered animals in the regions mentioned above?**

See the answer to question 1.

During the registration process for new federally inspected establishments the Regional Chief Inspector works with the establishment to create a "work shift agreement". When agreed upon this outlines staffing levels at the establishment and the Agency staffs as needed to fulfill its mandate.

**3. Do inspectors need to inspect every carcass? If not, what is the minimum inspection requirements?**

This is dependent on the market access the company is interested in. Different export markets require different levels of oversight and it also varies based on product type.

**4. What costs for the inspection process are borne by the slaughter facilities? What costs are borne by the government?**

Information regarding this question may be found here <http://www.inspection.gc.ca/about-the-cfia/acts-and-regulations/fees-notice/meat-products/eng/1306469511290/1307762809360>

Actual fees to be paid depends on the type of operation and number of prescribed inspection stations required (as a result of the species and type of operation) Information on the details of these fees can be found at the following link. <http://www.inspection.gc.ca/food/meat-and-poultry-products/manual-of-procedures/chapter-1/eng/1331537399462/1331561685699?chap=6#s9c6>

Note fees capture a fraction of the real costs associated with performing the inspection. No exact figure can be placed on a ration due to differences in operations but the real cost to the Agency is complicated by a variety of factors including geography, hours of operation, and export markets (some countries require different levels of inspection to maintain eligibility to export.

**5. How many slaughter facilities in the regions mentioned above, butcher for more than 8 hours per day of slaughtering?**

See the answer to question 1.

**6. Does the Federal government collaborate with the Alberta government in any way with regards to inspection of slaughter facilities or carcasses?**

The CFIA and the Province of Alberta collaborate on a number of programs related to meat inspection including, but not limited to: Cattle ID, Disease control and reporting, and the control and management of waste and Specified Risk Material (SRM).



Alternative Land Use Services  
*Growing a healthier environment*

## How ALUS Works

*“Farmer and ranchers know best what parts of their land can produce food and fiber, and what lands can produce ducks, wildlife, cleaner air and water, and other public benefits.”*

*—Jonathan Scarth, Senior VP, Delta Waterfowl*





ALUS is a community-developed, farmer-delivered program that provides support to farmers and ranchers to enhance and maintain nature's benefits. ALUS has a simple goal: create a healthy working landscape that sustains agriculture, wildlife and natural spaces for all Canadians.

ALUS pays farmers to retain and reconstruct natural areas such as wetlands, grasslands, riparian areas and trees. It rehabilitates life-support processes, such as water filtration and purification, nutrient cycling and carbon sequestration, and helps restore declining biodiversity. Natural benefits include habitat for fish and wildlife including waterfowl, species at risk and native pollinator insects, cleaner air and water, and sustainable food production on working landscapes.

ALUS arose out of lengthy discussions with the agricultural community to try and address shortcomings in traditional approaches to conservation. Those discussions gave rise to the following core principles common to :

- **Community-developed:** Developed by local communities to be flexible and respect local agricultural and environmental priorities.
- **Farmer-delivered:** Farmers and ranchers are in the best position to deliver nature's benefits on their land.
- **Targeted:** Select marginal and ecologically sensitive parcels of land are managed in a different manner to produce nature's benefits.
- **Market Driven:** Benefits from nature produced by project activities have economic value.
- **Voluntary:** Farmers and ranchers choose to participate and have flexible agreements that suit their operation.
- **Integrated:** Delivery will complement existing conservation programs including federal and provincial government policy frameworks.
- **Accountable:** Projects are independently monitored and audited.
- **Science-based:** Social, economic and environmental sciences guide program development and implementation.

*[taken from <http://alus.ca/how-alus-works/>]*

# Clear Hills County Agricultural Fieldman Report

---

**February , 2015**

**Aaron Zylstra**

## **Pest Control**

### **Rental Program**

- We have revised the Equipment Rental Agreement (attached). The new form includes an equipment check list pre-rental and post rental. It also includes a few more terms & conditions listed on the reverse side. Including the damage deposit refund information should reduce administration time and paper work.
- The grain extractor is being repaired for a broken gearbox.
- Additional 4 inch discharge hose has been ordered & received. We are working on getting quotes for building an additional 13 hose reels.
- We're receiving quotes and moving toward purchasing parts for the new portable toilets trailer.
- Council approved the removal of the RFID tag readers, the bale sampler, the livestock ultrasound, and the magpie traps from the rental program.
- Rental equipment summary is attached to this report.

### **Weed Program**

- MRF is in the process of updating the FieldGIS Weed inspection program for 2015.
- Developing a Foxtail Barley control plan for roadsides and right of ways.

### **Other Topics**

#### Peace Agronomy Update:

This update is organized by NPARA and held in Fairview. There were some excellent presentations covering a broad range of aspects from plant health to Wheat Midge to the market outlook. Tom Jensen, International Plant Nutrition Institute, showed how proper nutrition can reduce crop disease and pests. He also gave some indicators of crop nutrient deficiencies, such as purplish, cupped leaves may indicate sulfur deficiency.

Patrick Fabian, Fabian Seed Farms, described his first-hand experience with introducing a new crop to the seed farm. Patrick found that soybeans were moderately simple to and to cropping rotation, and they have some very unique characteristics. Soybeans are a highly hairy plant that fixes tremendous amounts of nitrogen in the soil. The pods are highly resistant to shattering and the plants do not lodge easily. The key to a good soybean crop is the double inoculant process that Patrick said is necessarily to get the most out of the seed.

Scott Meers, Alberta Agriculture Entomologist, presented on the wheat midge life cycle and some challenges the Pest Surveillance Branch had with forecasting the Wheat Midge populations in the Peace Region, specifically the Falher area. The populations appeared to have peaked twice in 2014, which is contrary to what commonly happens with this insect. More work is being done to understand this insect in the northern Alberta climate.

Errol Anderson, Pro Market Communications, was the final speaker of the day. He presented his outlook on the future pricing of commodities. He predicted the feeder cattle prices to drop, the high is over but it looks to be a soft landing/decline.

#### Provincial ASB Conference:

The Central Region AF hosted an excellent conference with several young aspiring presenters. Technology appeared to be the key topic throughout the conference.

Simon Anderson, Futurist, presented some real plausible outlooks on the future of agriculture with technology. Unmanned aircraft providing pesticide applications, robots in the field that weed, spray, till on their own under the power of solar energy are on the cutting edge of agriculture equipment. Vertical farming, desert reclamation, and in home plant incubator will be the status quo in the future.

Lyndsey Smith, RealAgriculture.com, presented on the cultural and emotional side of food. The connection between people and what they eat is not always a logical choice. People associate food and eating with family time, friends, value, habits and numerous other ideas other than what the nutrition label says. Social media plays a huge role in the determination of what food is 'right' for the consumer.

Brad Stelfox, presented on relationship between energy use and land use. The growth of urban centres is a significant factor of agricultural land use. Brad's statistics said that in Alberta every 8 hours 10 hectares are given to cities, 72 ha are forested, 4,105 tonnes of garbage is produced, 87 people are added to the population, and 39 million miles are driven.

Les Kletke brought a different perspective to the expanding agricultural world and global land base. He said that Brazil has opened 100 million acres (mostly from rain forest) and they can grow 3 crops a year. Also the second most used language on the internet is Portuguese, the language of Brazil.

Candace Vanin, Agriculture and Agri-Food Canada, talked about understanding development pressures. Land use tends to follow economics, and development is the natural result of growth. Agriculture land reserves have been adopted by 3 provinces including BC in 1973, Quebec in 1978 and Ontario in 2005.

Steve Savage, spoke to navigating food industry marketing and the current trends in consumer demands. The food industry has moved into a culture of 'marketing of non-existence', such as 'fat-free', 'no trans-fat', and 'gluten free'. In 1996, a biotech potato was produced to resist potato beetles, which meant less demand for pesticides. The outcry was so great against genetically modified food that Frito-Lay and McDonalds banned any use of this type of potato. The current consumer culture is that true

knowledge is overwhelmed by 'information'. There is a general fear of conspiracy theories and ultimately leading to the 'death of authority'.

The Ministers' Forum was very engaging and covered a wide range of issues including, the Pest Act review, controls of flood areas, provincial government airplanes, diesel fuel prices, MSI funding, urban sprawl, ag plastics, public transportation, rural schools, and many more. The ministers had opportunity to communicate with Agricultural Service Board members and to hear their concerns and ideas.

**Events:**

- March 10<sup>th</sup>, shelterbelt tree information session and EFP workshop
- Virulent Blackleg & Clubroot 5X workshop in Fairview on March 19, 2015.
-

# Clear Hills County

## Request For Decision (RFD)

Meeting:	<b>Agricultural Service Board Meeting</b>
Meeting Date:	March 9, 2015
Originated By:	Aaron Zylstra, Agricultural Fieldman
Title:	<b>BOARD REPORTS</b>
File No:	63-10-02

### DESCRIPTION:

At this time the Board members will have an opportunity to present their reports.

### BACKGROUND / PROPOSAL:

At this time the Board members will have an opportunity to report on meetings attended and other agricultural related topics.

### ATTACHMENTS:

- Chair Harcourt's report
- Member Davis

### RECOMMENDED ACTION:

RESOLUTION by \_\_\_\_\_ that this Agricultural Service Board accepts the Board members' written or verbal reports of March 9, 2015 for information.

Initials show support - Reviewed by: Manager: *ABj* AgFieldman: *AK*

Winter Watering Workshop - January 31<sup>st</sup>, 2015

Brian Harcourt

When building a system mathematical calculations can help you match line size to the rise, distance and number of cattle you are watering. In our area Shawn Elgert can be reached at 780 674 8215.

There is no such thing as a maintenance free system. you will always have to check it regularly for freeze ups and failures.

An ideal system balances reliability and affordability. No perfect or ideal system has been developed yet. Yours could be the first.

Make sure you talk to an ESRD person before developing any system on existing natural water bodies.

Options and Suppliers are available check them all before deciding on your final choice.

Frost-free Nose pumps are a real option.

Geothermal Heat-Assisted Troughs...Little Red Feeders---Innisfail, AB 403 227 2750.

Thermosinks do not use electricity (except for the supply pump in your home). Call UFA for more details.

Batteries...Get the biggest and the best and keep them warm.

Harcourt.

Peace Agronomy Update – January 15, 2015

Brian Harcourt

Dr. Tom Jensen....International Plant Nutrition Tech.

Nutrition problems can become pest problems. Publications are available at [www.IPNI](http://www.IPNI).

Potassium deficiency causes many problems, weak stock, small shorter roots, kernel weight, stem strength, stress tolerance.

K2O increases protein content and yield, helps reduce winterkill in forage crops, 100 pounds per acre was suggested. Top six inches is needed for soil testing.

If anyone is interested in trying Soybeans you could give Patrick Fabian –Seed Farms Inc..403 633 9999 or [www.fabianseedfarms.com](http://www.fabianseedfarms.com)...

-Scott Meers—Insect Management Specialist...Subject was the Orange Wheat blossom Midge. Control this fly by crop rotation, early varieties, early seeding, increase seeding rate, no spraying after anthesis of the head...for more info go to [www.midgetolerantwheat.ca](http://www.midgetolerantwheat.ca)....and to speak to Scott call 1 403 362 1366.

-Errol Anderson...ProMarket Communications....Stock market analyst..Jan 15 2015..he predicted Can \$ to 80 cents, oil to \$35.00, barley to \$4.50 by spring...He will give anyone his opinion on just about anything! Contact him at 403 275 5555.

Harcourt.

Agricultural Service Board Provincial Conference – January 20<sup>th</sup>-23rd, 2015

Brian Harcourt

Simon Anderson...is a professional futurist and emerging technology and trends consultant.

Some quotes...technology doubles every 48 hours...farming practices becoming increasingly automated...consumer needs ever changing...why own when you can just access...alternatives to traditional foods...meat replacement to "FURKY"...hamburger to Beast burger...watch for

“Soylent” no sugar!...urban ag vertical farming-40% less power, 80% less waste,90% less water...more powerful solar panels and greater storage capacity...an Audi car driven 800 ks from los angels to los Vegas NO DRIVER!!!!

Harcourt.

Dr. Stelfox... established Forem Technologies and the ALCES (A Landscape Cumulative Effects Simulator) a program which explores the issues between landscapes, land uses,forestry, oil and gas, mining, human populations, tourism, and transport  
-ation sectors.

Some quotes...Ag. history 100 years ago rural population was 80% urban 20%, today its the opposite...8 million hectares of farm land in Alberta. 77% is used for energy in some form...Population increase is 1.5 to 2% per year, available farm land decreases by the same %, not really noticeable year for year.

If you had 2 minutes with the Premier what would you say to him or ask of him?

Recreation is fastest growing land use sector in AB...

In 40 years if we continue our course we will be a net importer of food!

Harcourt.

Les Kletke...Conference Chair...

Some quotes...You can't go broke making money!...keep good records, ie the cost of production...Brazilians produce twice as much food as almost every country...down to .003 cents per pound of production....The average Indian (from India) has 3 cell phones..When a new weed is discovered he makes a call to a central lab where where top of the line techs what to do about it...A water usage “dry” gene has been developed for corn, wheat could be next....Glyphosate “boiler cleaner” takes the metal out of grains and weeds...The world is going to get fed one way or another...Sugar is cheaper than health food...

One in two people in the USA are diabetic or on the edge...India produces more Doctors than Canada puts out university graduates...For the people who knows their numbers there many more potentials to make a very good living...Farms today are to large, off farm jobs don't cut it anymore nor does marrying a nurse or a teacher....Decisions on farm are made because of the current tax rules...Marriage insurance may be an essential option.

The end of the conference was the Bear Pit Session...Many good questions were put foreword but the answers were as the same “no money and or the program is being reviewed” This year there was only three ministers, last conference I was at there was fifteen ministers!

Harcourt.

	Minutes of the first Peace Region A.S.B. Chairmen meeting held at the Fantasyland Hotel, 7:30 pm January 20 <sup>th</sup> , 2015
	Meeting was called to order by Peace Region A.S.B. Provincial Committee representative Corey Beck. In attendance were representatives from most of the Peace Region A.S.B.'s :
	Saddle Hills County; Ken Titford and Elaine Armagost, Agricultural Fieldman Mackenzie County; Joe Peters and Grant Smith, Agricultural Fieldman Clear Hills County; Brian Harcourt County of Grande Prairie; Corey Beck and Sonja Raven Agricultural Fieldman M.D. of Greenview; Bill Smith and Quentin Bochar, Agricultural Fieldman M.D. of Fairview; Bev Wieben M.D. of Peace; Veronica Bliska M.D. of Smoky River; Robert Brochu and Normand Boulet, Agricultural Fieldman M.D. of Spirit River; Tony Van Rootselaar and Kelly Hudson, CAO/Acting Fieldman Birch Hills County; Ken Hansen Northern Lights County; Cheryl Anderson Northern Sunrise County; Doug Dallyn M.D. of Big Lakes; Maureen Vadnais, A.S.B. Program Coordinator AARD
Recording Secretary	Introductions were made round table, a volunteer to take minutes was requested, Normand Boulet Agricultural Fieldman with the M.D. of Smoky River agreed to take minutes at the meeting.
Agenda motion 2015-01-01	Doug Dallyn from Northern Sunrise County moved to adopt the agenda as presented, seconded by Cheryl Anderson from Northern Lights County. <p style="text-align: right;">CARRIED</p>
	This being the first ever meeting of the group, there were no minutes from past meetings to review.
	A discussion surrounding who should chair this committee took place, Veronica Bliska supported having Corey Beck the Peace Region Provincial A.S.B. Committee representative act as chair, consensus was that Mr. Beck should be Chairman.
	Maureen Vadnais explained how the other three Regional A.S.B. Committee's operate, and the constructive work they have accomplished including the review and recommending responses to the Resolution Grading as well as vetting of Resolutions through the Committee.



Terms Of Reference	<p>The Terms Of Reference (TOR) for the NE Region's ASB Chair Committee was reviewed and discussed with the following highlights:</p> <ul style="list-style-type: none"> <li>• Individuals attending are paid expenses by their own municipality, lunch and hosting rotates through each municipality alphabetically</li> <li>• AARD can provide teleconference assistance if meeting in person is not necessary or possible</li> <li>• One meeting a year is minimum (to discuss Resolution Responses) and other meetings for Regional issues may be held as needed</li> <li>• Meetings to coincide with the Peace Region AAAF could be attempted to save travel costs, however having both meetings last approx. the same amount of time would be an issue</li> </ul>
TOR Motion 2015-01-02	<p>Doug Dallyn moved to adapt the Terms Of Reference from the NE Region for our use, to be done by Corey Beck, Sebastien Dutrisac and Sonja Raven.</p> <p style="text-align: right;">CARRIED</p>
Regional Representative Report	<p>Peace Region A.S.B. Provincial Committee representative Corey Beck reported on a meeting which had taken place that day with AARD Minister Olson and ESRD Minister Fawcett, highlights were:</p> <ul style="list-style-type: none"> <li>• ESRD appeared to appreciate the opportunity to discuss the issues which are jointly AG/ESRD. Minister Fawcett was open to meeting annually with the Provincial Committee</li> <li>• The WCA/CN Jurisdiction issue was discussed and it was thought the legal opinion should be available to ASB's</li> <li>• The issue of invasive species on waterways and other ESRD properties may be improved through a closer working relationship</li> <li>• The Alberta Game Management Assoc. is interested in having ASBs represented on their Predator Compensation working group</li> </ul>
New Business	<p>a) &amp; b) For the upcoming resolutions sessions, in particular the NSC sponsored Fusarium emergent resolution it was hoped the Boards of the Peace would be supportive and ready to speak to the issue</p>
	<p>b) Discussion took place on the possibility of developing regional policies to ensure consistency on certain issues ie. Cleaning of equipment to prevent clubroot entry into the region, or minimum requirements for fusarium inspections</p>
Information Dissemination	<p>An updated contact list of all Peace Region Chairmen is needed. It was noted that the TOR could include a requirement to update the list at each Regional Conference.</p>
Next Meeting	<p>The next meeting would be held to discuss the resolutions response grading. Possible dates were brought forward, following the Provincial ASB Summer Tour was considered the best choice.</p>
Nest Meeting Motion	<p>Veronica Bliska of M.D. of Peace moved that the next meeting take place Friday July 17th following breakfast at the Provincial ASB Summer Tour.</p>

2015-01-03		CARRIED
Motion to Adjourn 2015-01-04	Ken Hansen of Birch Hills County moved to adjourn the meeting at 8:40 pm.	CARRIED

TOM JENSEN

PLANT NUTRITION

POTASSIUM 0-0-60

Better roots, stem strength, Disease resistance  
better grain yield, Potassium added to Alfalfa increase  
life from 6 years to 9 years. Good for Matt Berky,  
and all crops

Most crops grow better with N+P+K+Sulphur.  
plants need 14 different nutrients.

Patrick FABIAN

Soybean Production - roundup Ready.

60 lbs. per acre

All soybeans needs to be inoculated

1" tall in plant put 10N into soil

sowing at 10°C at 10:00 AM - SOIL TEMPERATURE

Depth - 1" to 1 1/2" in soil

PUT NO PHOSPHATE WITH SEED

Soybeans builds N in your soil, growing  
season maybe not long enough in our  
Area

Wheat Midge  
Scott Myers

\* Wheat susceptible until awns on top of head.

To Control

1. Early seeding
2. Increase seeding rates
3. Crop rotation
4. Early Maturity
5. Variety Resistance

Chemical controls in evening  
Chlorpyrifos kills adults + eggs.

## Wheat Midge

The Wheat Midge is found in most areas of the world. Wheat Midge can reduce crop yields and lower grade of harvested grain. Crop damage occurs during the larval stage.

The life cycle of wheat midge has four stages.

Adult - orange fly 2 to 3mm long.

Eggs - Soil temperature greater than 15°C, 8:30pm <sup>open</sup> and wind speed less than 10 km/h for egg laying.

Larvae - Upon hatching, the orange larvae move from the soil surface into the seed to feed.

Pupae - Once temperature and soil conditions end, over-wintering period, become active move to soil surface.

Wasp and other parasites parasite, chemical control. Seeding dates control wheat midge. Other controls increase seeding rates, crop rotation, Early Maturing, Variety Resistance.

A.S.B. CONFERENCE

The A.S.B. conference was based on land use and food sectors

Water sheds, food, oil & gas, wind energy.  
Power lines, highways, forestry, hunt properties  
- Food Safety #1 coalition in World

Canada Population growing faster of G-8 Countries  
80% of Canada's farmland is on the prairie

50% of Canada's Dairy products come from Quebec  
Losing farm land in Alberta between Calgary & Edmonton every 8 hours lose 10 HA. 6% of farmers only farm, 20% are farmers working out in Alberta. Farmers will need social media & new technology for selling crops, buying parts, tank mixing, security etc.

What is Environmental Management System

land use framework

Water for life

Adaptive Management (Goals & Vision & Costs)

\* Lacombe County has an environmental plan

Canada is no longer bread basket of the world, Brazil is. Brazil grows 3 crops a year, Canada will have to be more competitive at growing crops, cheaper foods & GMO's etc. Only 4% of the world use G.M.O.

Winter water systems

- They use a 12 VOLTS SYSTEM - NO POWER  
 MODEABLE - submersible pump 12 VOLTS  
 - SOLAR PANELES  
 - 5 HOLE STOCK TANK - INSULATED

Pump is into blougout about 3 feet below surface. Piping from Pump to tank is up hill. so water will drain back, so it willnt freeze up. That is in a sealed compartment, floating in light oil.

TOTAL COST \$4500-  
 24 volt system is cheaper

U. F. A. Watering system

2 Hole system - NO heat.  
 float in middle compartment, sealed, in mineral oil underground line from his house.

TOTAL COST of watering system is \$1900-  
 plus trenching

Heated Pump House

Water tank (trough) in side off Pump House.  
 2 Holes in Wall at trough for cows to drink. Holes are covered (2' x 2') plywood when cow push in to get a drink (NOT A Good system). NO Power, A 12 Volt system

# Clear Hills County

## Request For Decision (RFD)

Meeting:	<b>Agricultural Service Board Meeting</b>
Meeting Date:	March 9, 2015
Originated By:	Aaron Zylstra, Agricultural Fieldman
Title:	<b>INFORMATION &amp; CORRESPONDENCE</b>
File No:	63-02-02

### DESCRIPTION:

The board is presented with correspondence for review.

### BACKGROUND:

Attached are documents for the Board's information:

### ATTACHMENTS:

- V.S.I Services (1980)Ltd. – Letter – (63-10-40)
- Don Thomas – Letter – (63-10-20)
- Happy Harvest – Article – (63-10-02)
- Bertha Armyworm 2014 – Map – (63-10-02)
- Alberta Grasshopper Forecast for 2015 – Map – (63-10-02)
- The Pest Insider – Article – (63-10-02)
- Peace Country Beef and Forage Association – Newsletter – (63-10-02)
- 2015 Peace Agronomy Update – Poster – (63-10-02)
- Safe Farm – Newsletter – (63-10-02)
- 21<sup>st</sup> Century Homesteading Permaculture in the Peace Country – Poster – (63-10-02)
- Producer Learning Day – Poster – (63-10-02)
- Alberta Invasive Species Conference March 12<sup>th</sup> – Poster – (63-10-02)
- Peace Country Ag Classic – March 12<sup>th</sup> to 14<sup>th</sup> – Poster – (63-10-02)
- Dugout Workshop March 17<sup>th</sup> – Poster – (63-10-02)
- Clubroot, Blackleg, Fusarium March 19<sup>th</sup> – Poster – (63-10-02)
- Smoky River Trade Show March 19<sup>th</sup> to 21<sup>st</sup> – Agenda – (63-10-02)
- Willow Harvesting Field Day April 22<sup>nd</sup> – Agenda – (63-10-02)
- Seeding the BioEconomy – Agenda – (63-10-02)
- Agroforestry and Woodlot Extension Society – Article – (63-10-02)
- Malathion Re-evaluation – Letter – (63-10-02)
- *Alberta Invasive species Council -Newsletter (63-10-02)*

### RECOMMENDED ACTION:

RESOLUTION by \_\_\_\_\_ that this Agricultural Service Board receives the information & correspondence of March 9, 2015 as presented.

Initials show support - Reviewed by 7 Manager: *Alby* AgFieldman: *AR*



# V.S.I. SERVICES (1980) LTD

A nonprofit organization providing veterinary care in Alberta

BOX 202

FAIRVIEW, AB T0H 1L0  
PH 780 835 4531

January 28, 2015

Mr. Allan Rowe, CAO  
Clear Hills County  
Box 240  
Worsley, AB T0H 3W0

Dear Allan

Enclosed is your 2015 VSI requisition in the amount of \$32,500.

Total VSI administrative costs, for 2014, including G.S.T. were approximately \$40,632. Your jurisdiction accounted for 358 (8.2%) of the 4,364 claims processed thus your share of administrative costs was deemed to be \$3,332.

Total investment income, for 2015, was \$4,004.55. The total cost of your claims, as per your fourth quarter report, which was sent to [aaron@clearhillscounty.ab.ca](mailto:aaron@clearhillscounty.ab.ca) and [sarah@clearhillscounty.ab.ca](mailto:sarah@clearhillscounty.ab.ca) was \$26,149. This was 6.1% of total claims expenditures of \$428,363 thus your share of the interest was deemed to be \$244.

The 2015 VSI fee schedule was increased 2.5% and a 10% contingency was added. As a result your **2015 requisition is equal to your 2014 claims plus a 12.5% increase plus your estimated net administrative costs for 2014** rounded to the nearest \$500.00. (Net administrative costs = administrative costs minus investment income)

Following is an estimate of your current VSI balance after adding 2014 administrative costs and investment income:

	Claims	Payments	Balance
Jan. 1, 2014			\$<3,157>
Payments in 2014		\$33,100	29,943
2014 Claims	\$26,149		3,794
Share of 2014 Expenses	3,332		462
Share of 2014 Interest		244	706

The amount in your **contract** was based on the actual cost of claims for **Nov 1, 2013 to Oct. 31, 2014 plus an estimate of administrative costs**. The amount of your **requisition is based on the actual cost of claims for 2014 plus an estimate of net administrative costs**. This explains the difference between your requisition of \$32,500 and the \$32,000 in your contract.

Please feel free to contact me if you detect any errors or if you have any questions.  
Thank you for your continuing support of VSI.

Yours sincerely

\_\_\_\_\_  
J. M. Henderson, Manager

cc Aaron Zylstra  
Sarah Hayward

# V.S.I. SERVICES (1980) LTD

A nonprofit organization providing veterinary care in Alberta

BOX 202

FAIRVIEW, AB T0H 1L0

PH 780 835 4531

January 28, 2015

Clear Hills County  
Box 240  
Worsley, AB T0H 3W0

## INVOICE

2015 VSI Requisition	\$32,500.00
Less Equity Dec. 31, 2014	700.00
<b>Balance Owning</b>	<b>31,800.00</b>

Note: The VSI Board of Directors approved a 2.5% cost of living allowance, increase in fees for 2015. They also recommended that the 2015 requisition should include a 10% contingency to help ensure that participating jurisdictions don't have to deal with additional requests for funds after their budgets have been finalized.

As a result of these two decisions your 2015 requisition is 12.5% higher than your total claims for 2014 plus an amount for net administrative costs equal to what these costs were for 2014. Your requisition has been rounded to the nearest \$500.00 and your equity balance has been rounded to the nearest \$100.

Although this requisition is not due until March 31<sup>st</sup> earlier payment would be appreciated.

Thank you,

---

J. M. Henderson DVM  
Manager





# HAPPY HARVEST

## PRICEY TECHNOLOGY COULD BENEFIT CANADIAN FARMERS

BREANNE TIDEMANN HOPES A new method of controlling herbicide-resistant weeds from Australia takes off in Canada before the problem becomes severe.

The method requires the use of the \$120,000 Harrington Seed Destructor (HSD), a tow-behind machine attached to a combine that collects weeds and grinds their seeds at harvest. Tests in Australia have shown the HSD is able to crush 92 to 98 per cent of weed seeds.

“We’re hoping Canadian producers can use the Harrington Seed Destructor to manage weeds before herbicide-resistance gets really bad,” said Tidemann, a University of Alberta graduate student. “The machine would be an add-on to conventional herbicide methods.”

As part of her PhD research, Tidemann is working with a team of researchers at Agriculture and Agri-Food Canada (AAFC) looking at the seed retention of weed species like volunteer canola, wild oats and cleavers.

Researchers in Western Canada will test the machine in fall 2015 after the data on weed-seed retention is complete, Tidemann said.

“It looks like cleavers will be a good fit because they hold seeds long into harvest, and produce high in the canopy. Volunteer canola is a good target. But wild oats seem to lose their seeds early on before harvest.”

Despite these first findings, more trials need to be done to be sure the machine is a good match for Canadian weeds, Tidemann added.

Positive Australian results prompted Canadian researchers to take a closer look.

In fact, 70 per cent of Western Australian growers are using a harvest weed-seed system due to high rates of herbicide resistance, according to Michael Walsh of the University of Western Australia, who has worked closely on HSD trials.



Photo: de Bruin Engineering

Pulled by a combine, the Harrington Seed Destructor grinds weed seeds left over late into harvest.

High rates of herbicide resistance developed due to the predominant use of conservation cropping systems and the complete reliance on herbicides for weed control, which delivered high frequencies of herbicide resistance, Walsh explained.

“Herbicide resistance in the dominant weed species is expanding at a dramatic rate,” he said. “There is a need to add additional weed control options into weed management programs.”

Herbicide-resistant weeds affect 40 per cent of cropland in Canada, according to estimates from Bob Blackshaw, weed scientist at AAFC. And herbicide use is a major method to tackle weed populations, he added.

“I think it’s important to have new methods that control weed seeds,” he said. “We don’t do much to get rid of weed seeds at harvest, although some farmers use pre-harvest herbicide applications.”

Methods like tillage, crop rotation and growing crops that “choke” weeds are instrumental when controlling weed populations at other times of the year, Blackshaw added.

Canadian farmers have largely balked at the machine’s price tag, but Blackshaw said the weed-population in Canada has worsened over the last 25 years, meaning new methods may need to be implemented.

“In the late ’80s and early ’90s, we’d see wild oats in 10 per cent of the fields we’d look at. Now, that rate is at 50 per cent,” Blackshaw explained. “Every year, wild oat populations get a bit worse, but we still have some time to establish other methods of controlling weed seeds on the Prairies.”

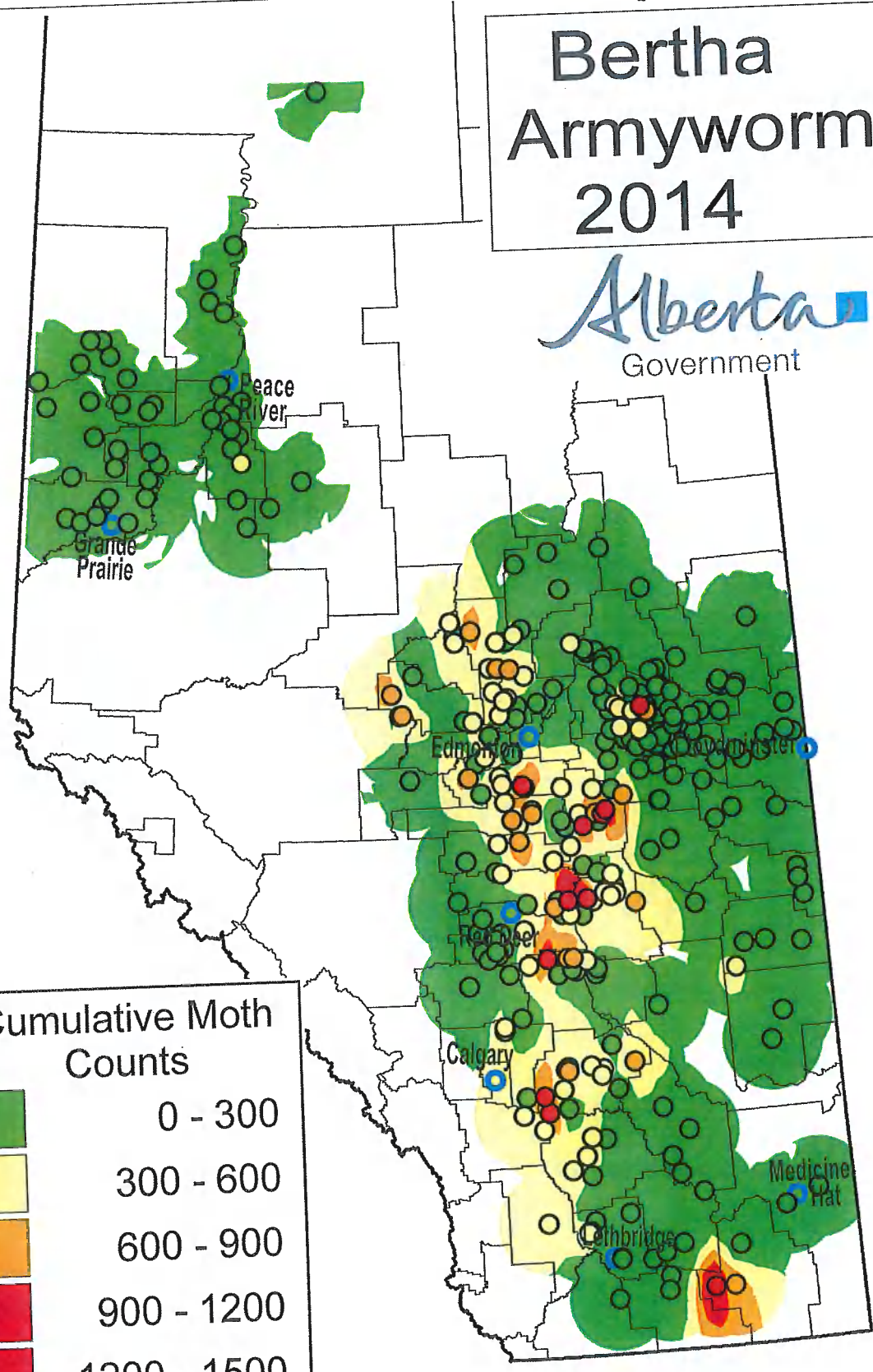
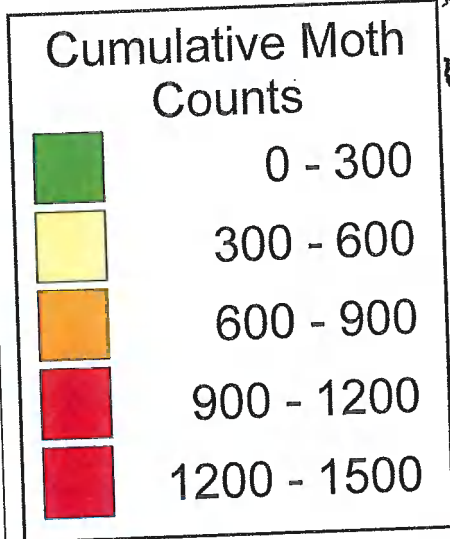
“We haven’t seen a new herbicide come to the market in the last 15 to 20 years, and we can’t continue to rely on new herbicides to solve the problem. We have to see what other methods are available.”

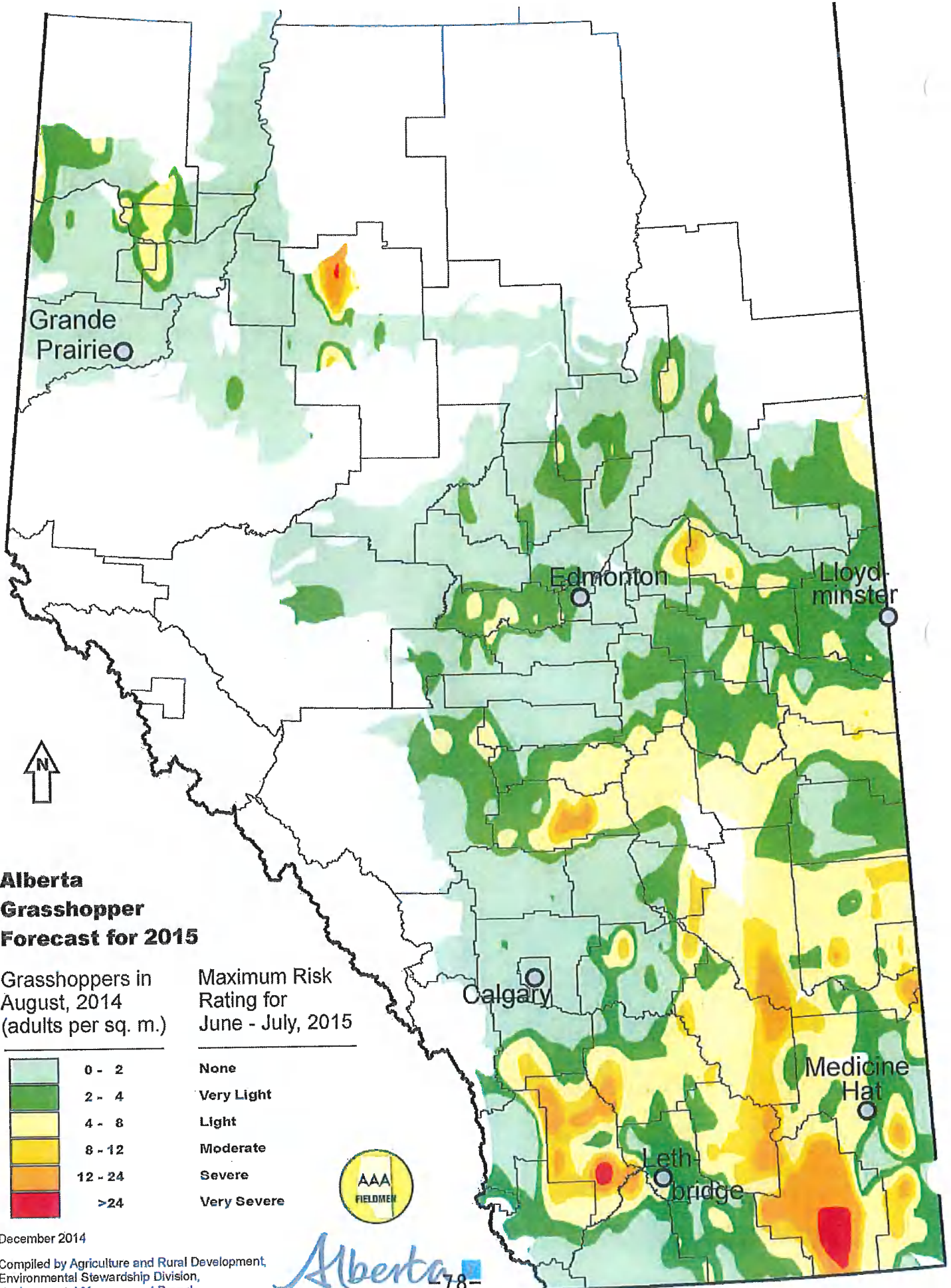
Tidemann said it’s incredibly important to ensure farmers can continue to produce high-quality, high-yielding crops.

“We’re not in a state right now where adoption of harvest weed-seed control practices are absolutely necessary, but we don’t want to get to that point,” she said. “By starting the work now we’ll have the answers for when producers need them to aid in the management of their weeds.”

# Bertha Armyworm 2014

Alberta  
Government





**Alberta  
Grasshopper  
Forecast for 2015**

Grasshoppers in  
August, 2014  
(adults per sq. m.)

Maximum Risk  
Rating for  
June - July, 2015

0 - 2
2 - 4
4 - 8
8 - 12
12 - 24
>24

None
Very Light
Light
Moderate
Severe
Very Severe



December 2014

Compiled by Agriculture and Rural Development,  
Environmental Stewardship Division,  
Environmental Management Branch.  
Map by AAFC.



# THE PEST INSIDER

Pest Control Officer Newsletter

January 2015

## Availability of 2% Liquid Strychnine Concentrate (LSC)

Agrium has announced they will discontinue sale of Pest Control Products in 2015.

Agrium holds the only registration for strychnine manufacturing concentrate in Canada. This registration enabled Agrium to manufacture LSC for sale to Alberta's municipalities for control of Richardson Ground Squirrels (RGS). Currently there is no stocked supply of strychnine concentrate or 2% LSC in Canada.

The Health Canada Pest Management Regulatory Agency (PMRA) has changed its requirements for registration of raw strychnine. Agrium's existing registration was obtained prior to the new standards for lab data and new compound testing, and so was not required to include all the components for a new registration.

Agriculture and Rural Development (ARD) is aware of at least one company that has applied to the PMRA for a registration for a strychnine manufacturing concentrate, but to date has been unsuccessful in their application.

ARD is working with industry and the PMRA to try and resolve the situation. If no one in the industry obtains a strychnine manufacturing concentrate registration, there could be no 2% LSC available in Alberta this spring and into the future for RGS control.

## Rats on South Georgia Island

An interesting article was recently published on the GlacierHub website, about rats on South Georgia island. Glacier melting has meant that rats can reach bird nests on the island, which is north of Antarctica and east of the Falklands. The reportedly biggest island-based rat-killing operation in history is under way in South Georgia, which was once one of the richest seabird-breeding territories in the world. Scientists are working to eradicate the rats before glaciers that currently serve as natural barriers between the rodents and remaining bird populations melt. You can read the entire article, "**Killing Rats to Save Birds as Glaciers Recede**" by Paul Chakalian, on the GlacierHub website here: <http://ow.ly/FC701>

## In This Issue

- 2% Liquid Strychnine
- Wolf and Coyote Concerns
- Rabies Control Skunk Vector Program
- Bait Stations
- Rat update, New and Noteworthy

## Wolf and Coyote Concerns

Wolf predation has increased and can be a big concern in areas with heavy bush cover in the northern part of the Province. Alberta Environment and Sustainable Resource Development (ESRD) is responsible for wolf predation control.

This winter coyote numbers don't seem abnormally high. High fur prices are forecast which should significantly reduce coyote numbers this spring. Some areas are reporting coyote concerns but most Counties are fairly silent. If you're in an area of concern and need to reduce

coyote predation, remember that the best time to lower the coyote population and hence the predation risk is after the coyote breeding season in Feb. and prior to spring thaw.

Removing coyotes at this time ensures maximum effect of your control. Taking adult coyotes in February through April reduces the breeding population and this control has the greatest effect on the coyote population in 2015.

Pups are born around the first part

of May so an extraordinary amount of food is required due to the large amount of energy used to raise the young. It is at this time that predation pressure on domestic stock is greatest.

Controlling coyotes after May requires more effort and predation risk is lowered as the calving season is ending.

Sheep are at risk during and after lambing so predation risk remains high for any sheep on pasture from lambing until the lambs are weaned.

## Rabies Control – Skunk Vector Program



Alberta Agriculture and Rural Development's (ARD's) rabies surveillance program continued in the counties along the United States (U.S.) border this year. Funding for this program is shared between the participating counties.

In April 2014, the Canadian Food Inspection Agency (CFIA) stopped providing some rabies-control program activities. The Alberta government has taken over responsibility for most aspects of what was previously the national rabies control program with the exception of testing of the samples collected. The diagnostic testing is still done

by CFIA at the Animal Disease Research Institute (ADRI) laboratory in Lethbridge.

ARD has hired a new public health veterinarian, Dr. Darcia Kostiuk, to co-ordinate the rabies program for the Province.

While there has not been an incident of rabies in skunks for more than 14 years, the counties in southern Alberta have continued this program because they can still recall the concerns and problems of local rabies outbreaks.

Sampling occurs along the U.S. and Saskatchewan borders. ARD staff, assisted by agricultural fieldmen in the southern region, continue to act as resource contacts for training in the delivery of this program.

Alberta's Central Rabies Control Committee (CRCC) still recognizes the counties of Cardston, Cypress, Forty Mile, Taber, Brooks, and Warner as possible participants of the program. The CRCC in partnership with these counties continue to monitor rabies in that area.



The following table provides general information on registered use areas for commercial class rodenticides.

**NOTE**

For any specific active ingredient, registered use areas may vary among product labels. The user is responsible for reading and following all label directions on all pest control products.

**TIER 3 Bait Stations:** used for the placement of rodenticide bait indoors, not in locations accessible to pets or livestock must have the following characteristics:

- (1) be constructed of high-strength material (e.g., metal or injection molded plastic) and resistant to destruction by children.
- (2) have an entrance designed so that children cannot reach the bait.
- (3) have internal structure which prevents bait from being shaken loose.
- (4) have an access panel that fastens securely and locks (e.g., metal screw or padlock).
- (5) bear the product name, active ingredient, guarantee, registration number, "WARNING POISON", and the skull and crossbones symbol.

**TIER 2 Bait Stations:** used for the placement of rodenticide bait indoors, in locations accessible to pets or livestock must have the following characteristics, in addition to those outlined above for tier 3 bait stations:

- (1) resistant to destruction by non-target animals.
- (2) have an entrance designed so that non-target animals cannot reach bait.

**TIER 1 Bait Stations:** used outdoors, above-ground, in locations accessible to children, pets and non-target wildlife must have the following characteristics, in addition to those outlined above for tier 2 and 3 bait stations:

- (1) be resistant to destruction or weakening by elements of typical non-catastrophic weather (such as, snow, rain, extremes of temperature and humidity, direct sun shine, etc.).
- (2) be within 15 M of a building in a tier 1 bait station, or within 100 M of a building if the bait is placed along a fence-line and in a bait station secured to a surface.

Bait applied outdoors and above-ground **MUST** be placed in tamper resistant bait stations. Placing of bait in feed bale stacks without bait stations is permitted if labeled with product name, active ingredient, guarantee, registration number, "WARNING POISON", and the skull and crossbones symbol on a flag.

# RAT UPDATE

In the Rat Control Zone this year, the Sibbald area had two infestations found at separate producers four miles apart. Also there was a small infestation of two rats with babies found at a bin in the middle of a field about ten miles North from either infestation.

Late October 2014, a rat blitz with eight PCO's was set up to ensure no rats were making the Sibbald area a home for winter. No further rat activity was found in the area in Alberta, but a large rat infestation two miles into Saskatchewan was found at a wooden granary half full of oats in the middle of a field. Larry Mann the PCO from Milton is working on controlling those rats.

In the province in 2014 we have had five single rats in Calgary, two single rats in Edmonton, one nest of six mature rats (2 carcasses found, 4 reported killed) in Redcliff at a machinery recycling plant, one rat found at the Youngstown landfill, single rat made its way to Ft. McMurray and a single rat was located on Okotoks.

This is more than usually found outside the rat control zone in one year.

# NOTEWORTHY

Liqua-tox water bait is no longer available in Canada as Bell Labs decided to not offer the product anymore. They will be letting their registrations lapse. Now it appears it is not the lack of a registration for the product, but a lack of available product. Another company that manufactures a liquid bait Motomco does not have a Canadian registration. ARD has contacted the company to inquire if they would consider supplying Canada with a liquid bait.

# UPCOMING EVENTS

70th Agricultural Service Board Convention at West Edmonton Mall January 20 to 23, 2015.

Feeder Association of Alberta (FAA) convention Tradeshow at the Sheraton in Red Deer on January 23 and 24, 2015.

AgriVisions in Lloydminster, February 17 to 19, 2015.

Alberta Association of Municipal Districts and Counties (AAMDC) Tradeshow at the Shaw Conference Centre in Edmonton on March 16, 2015.

## Contacts

**310-RATS (7287)**

**310-FARM (3276)**

### Vaughn Christensen

Unit Manager  
Inspection Branch  
Work: 403-507-4064  
Cell: 403-896-1617  
Email:  
[Vaughn.Christensen@gov.ab.ca](mailto:Vaughn.Christensen@gov.ab.ca)

### Phil Merrill

Provincial Rat and Pest  
Specialist  
Work: 403-381-5856



[Link to ARD webpage](#)

Visit us on the web at  
[www.agriculture.alberta.ca](http://www.agriculture.alberta.ca)

On the thanksgiving weekend, a pest control officer (PCO) in Ft. McMurray received a call from Air Canada, regarding a live rat in the cockpit on an inbound plane from Vancouver B.C. As passengers and luggage were being unloaded, no rat was seen by Air Canada staff. As the plane was getting cleaned for the next flight, the ground crew saw a little figure on the tarmac – it was the rat! Off they went with a broom and shovel in hand to capture the rodent. After a lengthy chase, the rodent was captured alive in a cardboard box and put into a five-gallon bucket. The PCO was advised to pick it up anytime, as it was now deceased. When the PCO removed the lid, the rat was observed out of the box, alive and appeared to be tame. The rat was recaptured, and it was eventually euthanized.

# International Year of Soils

## 2015 has been Declared the International Year of Soils

by Stacy Pritchard

2015 has been declared the *International Year of Soils (IYS)* by the 68<sup>th</sup> UN General Assembly. The Food & Agriculture Organization (FAO) of the United Nations will be working within the framework of the Global Soil Partnership to implement IYS 2015. It has been determined by the FAO that “the current rate of soil degradation threatens the capacity to meet the needs of future generations”. The primary goal of IYS 2015 is to “increase awareness and understanding of the importance of soil for food security and essential ecosystem functions” ([www.fao.org/soils-2015](http://www.fao.org/soils-2015)).

The FAO identifies that “soils constitute the foundation for agricultural development, essential ecosystem function and food security and hence are key to sustaining life on Earth.”

There are several specific objectives that the FAO has set for IYS 2015:

- \* Raise awareness among society & decision makers
- \* Educate the public
- \* Support effective policies and actions for the protection of soil resources
- \* Promote investment in sustainable soil management activities
- \* Strengthen initiatives in connection with the Sustainable Development Goals (SDG) process and Post-2015 agenda
- \* Advocate for rapid capacity enhancement for soil information collection and monitoring at all levels.

Over the past few years, PCBFA has done a lot of work promoting soil health by bringing experts like Gabe Brown and Dr. Christine Jones and with the introduction of practices like cover cropping. We will also be a part of the ARECA team organizing The Western Canadian Soil Health Conference to be held in Edmonton Dec 8, 9 & 10, 2015. Planning for this conference is well underway, with 2 international speakers already confirmed; Gabe Brown of North Dakota and Peter Donovan of the Soil Carbon Coalition.

PCBFA also has a number of soil health events in the works, including a workshop on measuring soil carbon with Peter Donovan, and Dr. Christine Jones will be back this summer after her successful visit in November. Both Jones and Donovan will be touring the province, doing events with several ARECA groups.

PCBFA and ARECA’s role in IYS 2015 will be to deliver IYS 2015 programming, focussing on education and advocating for soil health.

Please visit FAO International Year of Soils (<http://www.fao.org/soils-2015/en/>) for more information on IYS 2015 and soil health in general.



2015  
International  
Year of Soils

healthy soils for a healthy life

### PROTECT OUR SOILS

Our soils are in danger because of expanding cities, deforestation, unsustainable land use and management practices, pollution, overgrazing and climate change.

The current rate of soil degradation threatens the capacity to meet the needs of future generations.

The promotion of sustainable soil and land management is central to ensuring a productive food system, improved rural livelihoods and a healthy environment.

### WE DEPEND ON SOILS



Healthy soils are the basis for healthy food production.



Soils are the foundation for vegetation which is cultivated or managed for food, fibre, fuel and medicinal products.



Soils support our planet's biodiversity and they host a quarter of diversity.



Soils help to combat and adapt to climate change by playing a key role in the carbon cycle.



Soils store and filter water improving our resilience to floods and droughts.



Soils are a non-renewable resource, its preservation is essential for food security and our sustainable future.

### SPECIFIC OBJECTIVES OF THE YEAR



Raise awareness among civil society and decision makers.



Educate the public.



Support effective policies and actions for the protection of soil resources.



Promote investment in sustainable soil management activities.



Strengthen institutions in connection with the Sustainable Development Goals (SDG) process and Post-2015 agenda.



Advocate for rapid capacity enhancement for soil information collection and monitoring at all levels.

# The Role of Soils —

As ranchers and farmers, we likely know more about soil than most. But as I've learned since starting with PCBFA, there is a lot more to soil than making up the ground we walk on or where we grow our crops. Understanding the role soil plays in supporting our operations can help us to manage soil to increase production and profitability.

So what role does soil play? To put it broadly, they are the basis for production in a wide variety of industries including food, fuel, fibre and medicine. But looking at soil as merely a commercial product used in the manufacture of these products is a mistake. Soil is a living part of the ecosystem that contributes to successful production systems.

Getting into a little more detail:

- \* Soils contribute to food security
- \* Soils manipulate water; they store and filter water to help us survive both floods and droughts
- \* Soils regulate plant nutrient cycles (N, P, K, Ca, Mg).
- \* Soils exchange gasses with the environment (CO<sub>2</sub>, O<sub>2</sub>, methane, water vapor).
- \* Millions of organisms call soil home (bacteria, fungi, worms and more) and soil supports this biodiversity
- \* Soil helps disperse and distribute seeds for the plant life it supports and is the foundation for terrestrial vegetation
- \* Soil is also the foundation for our homes, towns and cities.
- \* Finally, soil has the greatest store of terrestrial organic carbon which helps to combat and adapt to climate change



[www.soilcarboncoalition.org](http://www.soilcarboncoalition.org)

As we can see, soil plays a much bigger role than simply being dirt.

So where do we start? Well, if we define soil health as “the capacity of soil to function as a living system” we can begin to understand why some soils are less productive. Soil must be living in order to be healthy, and healthy soil is productive soil. There are three main components to healthy soil according to Cornell Soil Health (<http://soilhealth.cals.cornell.edu>); physical, chemical and biological. The chemical components are nutrients and pH, and these characteristics have been analyzed by scientists and have been utilized by farmers for many years. The physical components include things like compaction and water infiltration. The biological components are the least understood, and there is a lot of research going into how biological components including bacteria, mycorrhizal fungi, earthworms and other soil microbes work to build healthier soil.

We've talked a lot about the biological component of soil health in both the October and December 2014 issues of *Forage Facts*. Based on the teachings of both Gabe Brown and Dr. Christine Jones we have learned that “Diversity of plants above ground = Diversity of microbes below ground”. The carbon provided to the soil from plants above ground supports the microbial activity in the soil. This increased activity by soil microbes can improve soil structure, increase nutrient availability as well as increase infiltration and water holding capacity. So we can see that by improving the biological component of our soil, we can impact the chemical and physical components as well.

Soils play an important role in contributing to food security. This is a key reason why protecting our soils is so important. The vast majority (95%) of our food can be directly and indirectly produced by soil, therefore producing healthy food for a growing population depends heavily on healthy soils.

It is the physical characteristics of soil that can help us during both droughts and floods. Characteristics like soil compaction and soil structure impact how soils manipulate water.

**Find us online!**

[www.peacecountrybeef.ca](http://www.peacecountrybeef.ca)



@pcbfa

@pcbfa\_crops



<https://www.facebook.com/groups/pcbfa/>

# More Than The Ground We Walk On

By: Stacy Pritchard

When soils are compacted and have poor soil structure and little stability water cannot infiltrate into the soil, and instead it will run off the surface and not be available to the biology in the soil. But when soil is loose, has a stable structure and is porous, water will infiltrate. Vegetation also helps with water manipulation by slowing down the flow of water so it has the chance to infiltrate the soil. Even the best and healthiest soils can only hold so much water, so once soil is saturated, some water drains into the groundwater, but the rest stays in the soil to be used by soil biology or is evaporated. Infiltration rate is typically expressed in inches/hour and is a characteristic that is impacted by land management. By minimizing soil disturbance and compaction and using high residue crops to increase soil organic matter, the soil infiltration rates can be improved.

The chemical characteristics of soil are what we are most familiar with, especially the role of soil in nutrient cycling. This is a biogeochemical process in which soils store, release and cycle nutrients. This nutrient cycle needs to be balanced in order to support plant and microbial life. Agricultural practices can deplete the nutrients in the soil by converting them into food or feed when used in intensive production systems. We can artificially supplement nutrients by applying fertilizers to restore this balance to get the most out of our crops, but there may be a healthier way to balance the nutrients in our soil with better land management.

As we can see, the characteristics of soil work together to improve the function of soil. As we move forward with IYS 2015, we should think about the role soils play and how increased soil health leads to increased soil function.

A few of the many soil health resources available are:

- \* USDA Natural Resources Conservation Service: Soils
- \* FAO International Year of Soils 2015
- \* Cover Crop Innovators Video Series

## LIVING SOIL VS. DEAD SOIL

### WHY SOIL MATTERS TO FARMERS AND THE ENVIRONMENT

An entire world that feeds us lives beneath our feet. Healthy soil holds a wealth of organic matter made up of worms, good bacteria, fungi and other microorganisms that work together to help crops thrive. When soil life is disturbed or unprotected, it becomes difficult for these natural soil builders to be productive and for farmers to grow their crops. Building rich, diverse, and healthy soil ecosystems is a critical life-giving farming practice. Luckily, caring for soil is one of the most effective time-tested ways farmers can increase crop yields while protecting our natural resources.



### LIVING SOIL

**EARTHWORMS** - create vital water channels as they burrow through the soil. These channels allow rain to soak into the soil, where it can help crops grow. Earthworms also add important nutrients to the soil.

**RESIDUE** - or stubble from previous crops, acts like a garden mulch. It helps soil retain moisture, suppresses weeds, and prevents erosion and contaminated runoff and reduces flooding.

**MICROORGANISMS** - such as bacteria and fungi, help to filter contaminants and stabilize the soil to prevent erosion. They help form the glue that keeps soil intact.

**COVER CROPS** - are grown for the purpose of improving soil health. Cover crops deliver natural fertilizer to the soil, prevent erosion, and increase biodiversity. Their roots also create pores in the soil for better water infiltration.

### DEAD SOIL

**BARE SOIL** - without any residue or cover is unprotected from the elements. As a result, it cracks and turns hard and dusty, more like concrete than soil. Water cannot reach the crops' roots to grow effectively. Instead, the chalky dirt becomes runoff that flows right off the field.

**EROSION** - is more likely to occur from unhealthy and unprotected soils. When soil from fields runs off into nearby streams, it can cause health problems and harm fish and other wildlife.

**INCREASED CHEMICALS** - like dangerous fertilizers and pesticides are notorious inputs that crops from unhealthy soils now rely on to grow. These chemicals can cause serious health and environmental problems if they contaminate water.

**PESTS** - such as insects or weeds, are more likely to invade fields when the soil ecosystem is too weak to defend itself.

### Contact us for:

- Project Ideas
- Feed Testing
- Environmental Farm Plans
- Growing Forward 2 Assistance
- Ration Formulation Help
- Past Project Information

# Upcoming Events!

Thanks  
to our  
Sponsors!



A proud  
member of



## Producer Learning Day Shelterbelts, Growing Forward 2 & Environmental Farm Plans

- \* March 10, 2015
- \* Eureka River Hall
- \* 9:30am-3pm
- \* Hear from the Agroforestry & Woodlot Extension Society about the benefits of Shelterbelts
- \* Get an update on Growing Forward 2
- \* Environmental Farm Plan Workshop
- \* And PCBFA staff will be on hand for assistance with Growing Forward 2 applications

## Dugout Workshop

- \* March 17, 2015
- \* Valleyview Ag Society Hall
- \* 1pm - 4pm
- \* Join us to learn from Alberta Agriculture Water Specialists
- \* Dugout design, construction & aeration
- \* Dugout biology & water quality troubleshooting
- \* In-house treatment of surface water
- \* Growing Forward 2 Programs

## Environmental Farm Plan Open House Days

<u>Debolt</u>	<u>High Prairie</u>
March 27, 2015	March 31, 2015
1-4pm	1-4pm
Community Centre	PCBFA Office Prov. Bldg

Sit down with PCBFA staff for an EFP workshop to either get one started for your farm, or to complete your EFP

## Land Acquisition & Planning for the Future

- \* March 13, 2015 at the Peace Country Classic
- \* 9:45am Registration
- \* 10am Start and Wrap-up by 11:45am
- \* Fred Mertz from *Farming for Freedom*
- \* Learn about land acquisition and tax planning—aiming to help young farmers set up their business to succeed!

## Don't Forget to Renew Your PCFBA membership for 2015!!!

Mail your \$30 Membership fee to:  
Peace Country Beef & Forage Association  
Box 2803  
High Prairie, AB T0G 1E0

Include any contact information changes.



There are 3 kinds of men  
The one that learns by reading.  
The few who learn by observation.  
The rest of them have to pee on the  
electric fence for themselves.  
~ Will Rogers

[www.horsemansjingle.com](http://www.horsemansjingle.com)

For more information or to register for PCBFA events please call Stacy at  
780-835-6799 or 780-772-0277!

Monika Benoit  
Manager  
High Prairie, AB  
780-523-4033  
780-536-7373

Akim Omokanye  
Research Coordinator  
Fairview, AB  
780-835-6799  
780-835-1112

Stacy Pritchard  
Extension & ASB Coordinator  
Fairview, AB  
780-835-6799  
780-772-0277

Kaitlin McLachlan  
Crop Program Coordinator  
Fairview, AB  
780-835-6799  
780-523-0443



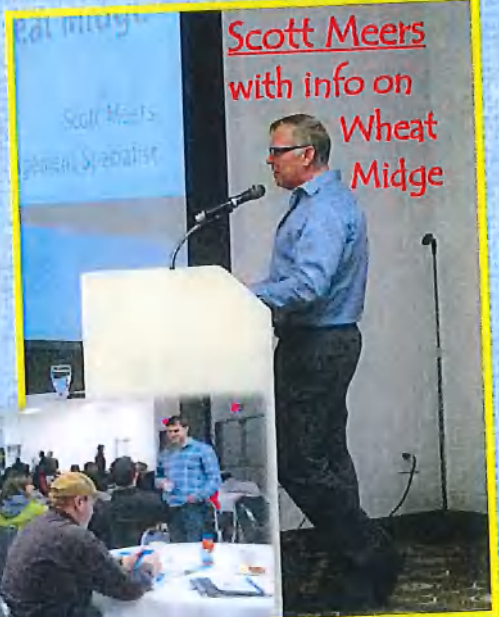
# Successful 2015 PEACE AGRONOMY UPDATE

Great information exchange with 90+ folks in attendance.

Errol Anderson  
giving his market  
outlook



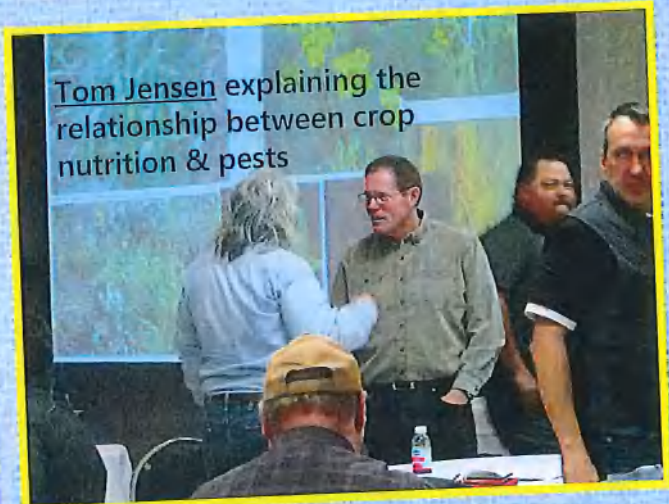
Scott Meers  
with info on  
Wheat  
Midge



Patrick Fabian  
discussing soybean  
production



Tom Jensen explaining the  
relationship between crop  
nutrition & pests



*Thank you for your support & sponsorship of the -*  
**2015 PEACE AGRONOMY UPDATE**



## In this issue

**Working in cold weather..... 1**

**Cold weather safety tips ..... 2**

**Shift work: getting enough sleep and physical activity..... 2**

**Carbon monoxide at the worksite ..... 3**

**Risk management in winter conditions.... 6**

**Contact ..... 6**

## Working in cold weather

*Source: Canadian Centre for Occupational Health and Safety*

Many farms are operational year-round, which means workers are exposed to all weather conditions that Alberta has to offer. These temperatures include the hazardous implications of extremely cold temperatures and bone-chilling wind.

A cold environment challenges the worker in three ways: by air temperature measured in degrees Celsius (°C); air movement (wind speed), measured in metres per second (m/s), kilometres per hour (km/h) or miles per hour (mph); and humidity. In order to work safely, these challenges have to be counterbalanced by proper insulation (layered protective clothing), physical activity and controlled exposure to cold (work/rest schedule).

### What is wind-chill temperature?

At any temperature, you feel colder as the wind speed increases. The combined effect of cold air and wind speed is expressed as “equivalent chill temperature” (ECT) or simply “wind chill” temperature in degrees Celsius. It is essentially the air temperature that would feel the same on exposed human flesh as the given combination of air temperature and wind speed. It can be used as a general guideline for deciding

clothing requirements and the possible health effects of cold.

In some parts of Canada the term “wind chill factor” is used. This is a measurement of a heat loss rate caused by exposure to wind and it is expressed as the rate of energy loss per unit area of exposed skin per second.

### What can be done to help prevent the adverse effects of cold?

For continuous work in temperatures below the freezing point, heated



*Workers should dress according to temperature and wind chill factors when working outside in the winter.*

*Continued on page 3*



## Cold-weather safety tips

- ❖ Plan to take lots of breaks depending on the severity of the weather you are working in. Consider this guide:
  - ❖ One work break per four-hour period for temperatures down to -28°C with up to 8 km/h wind.
  - ❖ Two to three work breaks per four-hour period for temperatures between -29°C and -31°C and wind up to 16 km/h.
  - ❖ Three to four work breaks per four-hour period for temperatures between -32°C and -34°C and wind up to 16 km/h.
  - ❖ Four to five work breaks per four-hour period for temperatures between -35°C and -37°C and wind up to 16 km/h.
  - ❖ Non-emergency work should cease for temperatures lower than -42°C.
- ❖ Keep your body nourished and hydrated during cold weather work. This will increase your body's ability to respond to extreme temperatures and combat fatigue.
- ❖ Monitor for severe winter weather in your area through Environment Canada or one of the many applications available on smart phones and tablets.
- ❖ Stockpile emergency materials. Have a standby electric generator in case of a power outage, and keep a supply of sandbags, a shovel and road salt or ice melt available.
- ❖ Develop an emergency plan for water and feed resources. Obtain emergency supplies of forage and grain, identify emergency resources for water and have a list of suppliers, truckers and people that can help in case of an emergency.

## Shift work: getting enough sleep and physical activity

Source: [healthyalberta.com](http://healthyalberta.com)

Workers doing physically demanding jobs need to have the balance, energy and strength to work safely.

This article suggests ways to get enough sleep and physical activity to help you feel at your best throughout your busy shift schedule.

### Shift work in Canada

About 25 per cent of workers in Canada do rotational shift work. Shift workers don't work from "nine to five" on weekdays. These workers rotate between day and night shifts or may only work nights.

Some people work 12-hour shifts rather than an eight-hour work day. Many people enjoy shift work, as it allows them longer periods of time off to be with their families or to pursue other interests.

For others, shift work is just part of their job. For example, shift workers often do critical work in hospitals, policing, emergency response, farming, and the oil and gas industry (to name a few areas). In these settings, round-the-clock service (24/7) is needed.

In some cases, if life gets out of balance, shift work can affect workers' health and safety.

### Sleep and shift work

Most shift workers don't get enough sleep. They often work when other people sleep and sleep when the rest of the world is awake.

The human body has a 24-hour

cycle of wakefulness and sleepiness regulated by an internal clock. This cycle means that we are naturally wakeful in the morning when it gets light and naturally sleepy when it gets dark at night.

When you're tired because you didn't get enough sleep, you may think and move slowly, make more mistakes and have difficulty remembering things. So, getting a good sleep is important for safety and other reasons.

Getting more physical activity and eating right can be a good strategy for getting a better sleep.

The National Sleep Foundation has lots of helpful tips for staying alert on the job and for sleeping. Here are some of their suggestions:

- Try to exercise during breaks.
- Talk with co-workers while you work.
- Try to work with a "buddy."
- Take short breaks throughout your shift to use the employee lounge, take a walk, shoot hoops in the parking lot or climb stairs.
- Try to eat three normal meals per day. Eat healthy snacks, avoiding foods that may upset your stomach.
- If you consume caffeine (coffee, tea, soda, energy drinks, gum, mints), do so early in the shift, such as before 3 a.m. for the night worker.
- Don't leave the most tedious or boring tasks to the end of your shift when you will probably feel the most sleepy.



## Carbon monoxide at the work site

Source: Alberta Jobs, Skills, Training & Labour

Farm work often consists of many hazards, most of which are quite obvious. However, sometimes farm workers are at risk of dealing with a hazard they can't see or smell. Such is the case with the deadly carbon monoxide. Unless there is a carbon monoxide detector in every building, the only defense is to know the conditions that create this poisonous gas and take measures to eliminate exposure.

Carbon monoxide is a colourless, odourless gas. It is usually formed from the incomplete combustion of fuels such as coal, coke, wood, oil and gasoline. Most of the carbon monoxide released into the atmosphere comes from internal combustion engines.

Carbon monoxide is a flammable gas. Mixtures of 12 to 75 per cent carbon monoxide in air can catch fire

and explode when there is a source of ignition present. Also, when heated to high temperatures, carbon monoxide can react violently with oxidizing agents such as oxygen, ozone, peroxides and chlorine.

### Sources of carbon monoxide at the work site

There are many potential sources of carbon monoxide at the work site. These include emissions from:

- internal combustion engines
- kilns
- furnaces and boilers
- welding
- moulding of plastics
- forging, ceramic, petroleum, steel and waste management industries,
- space heaters and improperly adjusted oil or gas burners
- fires and explosions
- cigarette smoking. ■



Ensure there is adequate ventilation for any indoor job where carbon monoxide is being created.

### Working in cold weather *continued from page 1*

warming shelters such as sheds, barns or shops should be available. The work should be paced to avoid excessive sweating. If such work is necessary, proper rest periods in a warm area should be allowed and employees should change into dry clothes. New employees should be given enough time to get acclimatized to cold and protective clothing before assuming a full work load.

#### Equipment Design

For work below the freezing point, metal handles and bars should be covered by thermal insulating material. Also, machines and tools should be designed so that they can be operated without having to remove mittens or gloves.

#### Emergency Procedures

Procedures for providing first aid and obtaining medical care should be clearly outlined. For each shift, at least one trained person should be assigned the responsibility of attending to emergencies.

#### Education

Workers and supervisors involved with work in cold environments should be informed about symptoms of adverse effect exposure to cold, proper clothing habits, safe work practices, physical fitness requirements for work in cold, and emergency procedures in case of cold injury. While working in cold, a buddy system should be used. Look out for one another and be alert for the symptoms of hypothermia.

#### What should I know about dressing for working in the cold?

Protective clothing is needed for work at or below 4°C. Clothing should be selected to suit the temperature, weather conditions, the level and duration of activity, and job design. If the work pace is too fast or if the type and amount of clothing are not properly selected, excessive sweating may occur. The clothing next to the body will become wet and the insulation value of the clothing will decrease dramatically. This increases the risk for cold injuries.

Some points to consider about dressing for work in cold weather:

- Clothing should be worn in multiple layers to provide better protection than a single thick garment.

*Continued on page 5*

## Shift work: getting enough sleep and physical activity *continued from page 2*

- Exchange ideas with your colleagues on ways to cope with the problems of shift work.
- It's a good idea to avoid exercising before going to bed, because exercise raises energy and your body temperature. You should exercise at least three hours before sleeping.

### Physical activity to feel better, physically and mentally

If you do shift work, you may benefit from physical activity because:

- Physical activity is refreshing and gives you energy.
- Physical activity increases alertness.

So, exercising before work is a good idea. Finding the time to be physically active may be difficult but is worthwhile even if you feel tired already. You may have more energy after you exercise than before!

Taking an active break during your shift can make you less sleepy and help you focus.

Often, we are more likely to be active with someone else or with a group of co-workers. Try getting your co-workers interested in going for a walk during your break rather than heading for the cafeteria.

### Working physical activity into your day

The key to regular physical activity is finding something you enjoy and can fit into your day and then making it a part of your life.

In larger towns, fitness centres are now open 24/7 to allow everyone to use them. Sports leagues can be flexible and allow for people to play

late at night or even during the day if enough people are available.

Some companies offer incentives for workers to be more active. For example, they may provide on-site equipment or facilities.



*Whether your shift is during the day or night hours, try to stay healthy and alert. This will reduce the risk of injury to you and those around you.*

Companies may also offer support (rebates, financial assistance or health spending accounts) for a fitness club membership, swimming pool passes or other physical activities.

Employers are becoming more aware of the link between fitness and productivity and are more open to helping workers exercise at work.

It helps to find a convenient location to be active on the way to or

from work. For example, some people leave early for work so they can stop in at the YMCA, swimming pool or recreation centre. Others stop off on the way home.

Sometimes, employers will help workers to be more active, especially if they see that this will improve their ability to work.

For many people, having a partner or group of friends to be active with can make a big difference to whether they actually do it. There may be someone else who works your shift who would also like to be more active and is open to doing something together.

A fast 30-minute walk outdoors every day is all you need to do to be active enough for health benefits. Walking with friends also allows for a visit.

Finding activities that you can do with your family will benefit all of you and help you spend time together.

Research has shown that wearing a pedometer is a good reminder to be active and that people who use them are more active than non-users.

Pedometers can be bought in drugstores and sports stores in your area.

Shift workers face challenges from living their lives on a different schedule than the rest of the world, but they also have time available to them when others do not.

By using some creativity and determination, it's possible to get enough sleep, eat in a healthy way, and enjoy physical activity in your day if you work on shift. ■

**Working in cold weather** *continued from page 3*

Having several layers gives you the option to open or remove a layer before you get too warm and start sweating or to add a layer when you take a break.

- The inner layer should provide insulation and be able to “wick” moisture away from the skin to help keep it dry.
- The additional layers of clothing should provide adequate insulation for the weather conditions. They should also be easy to open or remove before you get too warm to prevent excessive sweating during strenuous activity.
- For work in wet conditions, the outer layer of clothing should be waterproof. If the work area cannot be shielded against wind, an easily removable windbreak garment should be used. Under extremely cold conditions, heated protective clothing should be made available if the work cannot be

done on a warmer day.

- Almost 50 per cent of body heat is lost through the head. A wool knit cap, toque or hood can reduce excessive heat loss.
- Clothing should be kept clean since dirt fills air cells in fibres of clothing and destroys its insulating ability.
- Clothing must be dry. Moisture should be kept off clothes by removing snow prior to entering heated shelters. While the worker is resting in a heated area, perspiration should be allowed to escape by opening the neck, waist, sleeves and ankle fasteners or by removing outerwear.
- If fine manual dexterity is not required, gloves should be used below 4°C for light work and below -7°C for moderate work.
- Cotton is not recommended. It tends to get damp or wet quickly, and loses its insulating properties.

Wool and synthetic fibres, on the other hand, do retain heat when wet.

**Footwear**

Felt-lined, rubber-bottomed, leather-topped boots with removable felt insoles are best suited for heavy work in cold since leather is porous, allowing the boots to “breathe” and let perspiration evaporate. Leather boots can be “waterproofed” with some products that do not block the pores in the leather. However, if work involves standing in water or slush, the waterproof boots must be worn. While these protect the feet from getting wet from cold water in the work environment, they also prevent the perspiration to escape. The insulating materials and socks will become wet more quickly than when wearing leather boots and increase the risk for frostbite. ■

		<b>WIND CHILL CHART</b>								
		Ambient Temperature ( ° C )								
		4	-1	-7	-12	-18	-23	-29	-34	-40
Wind km/h	Velocity mph	Equivalent Chill Temperature ( ° C )								
<b>Calm</b>										
<b>0</b>	<b>0</b>	4	-1	-7	-12	-18	-23	-29	-34	-40
<b>8</b>	<b>5</b>	3	-3	-9	-14	-21	-26	-32	-38	-44
<b>16</b>	<b>10</b>	-2	-9	-16	-23	-30	-35	-43	-50	-57
<b>24</b>	<b>15</b>	-6	-13	-20	-28	-36	-43	-50	-58	-65
<b>32</b>	<b>20</b>	-8	-16	-23	-32	-39	-47	-55	-63	-71
<b>40</b>	<b>25</b>	-9	-18	-26	-34	-42	-51	-59	-67	-76
<b>48</b>	<b>30</b>	-16	-19	-22	-36	-44	-53	-62	-70	-78
<b>56</b>	<b>35</b>	-11	-20	-29	-37	-46	-55	-63	-72	-81
<b>64</b>	<b>40</b>	-12	-21	-29	-38	-47	-56	-65	-73	-82
Adapted from: Threshold Limit Values (TLV™) and Biological Exposure Indices (BEI™) booklet; published by ACGIH, Cincinnati, Ohio		Little danger in less than one hour exposure of dry skin			DANGER – Exposed flesh freezes within one minute			GREAT DANGER – Flesh may freeze within 30 seconds		
		Maximum danger of false sense of security								

# Risk management in winter conditions

By Nicole Hornett, ARD Farm Safety Coordinator

How do outdoor workers cope with cold weather? For farmers and ranchers, cold weather or extreme winter weather represents just another day on the job. Sometimes simply adding a layer of clothes just isn't enough.

Let's apply the hierarchy of control to discover some solutions for controlling an outdoor worker's exposure to cold temperatures (a.k.a. "the hazard"). The hierarchy of control is a systematic approach to put the strongest "line of defense" between the hazard and the worker.

## Can the hazard be eliminated or substituted?

Probably not: Livestock still need to eat and have their water sources inspected and de-iced. Workers still need to go outside to get to the barns or check the enclosures. Evaluate

the role of non-essential workers or observers (siblings, cousins, friends, etc.) – now is the time to focus on the task at hand, not to socialize.

## Which engineered controls could we put into place?

Do you use machinery to haul bales, check water and observe the livestock? Select the most reliable vehicle with a safe, dependable heating source to limit exposure to the cold temperatures. Ensure you and the vehicle are adequately equipped with emergency winter gear and a method of communication. What would you do if your tractor stalled at -40°C and you couldn't get it re-started?

## Are there administrative controls that could help?

Do you use a cold weather work/break schedule? It is a great example of an administrative control. It outlines how many warm-up breaks a worker should engage in depending on the air temperature and the speed of the wind (wind-chill value). Scheduling tasks and workers can

help to ensure no one is over-exposed to the hazard. Save non-critical outdoor tasks for warmer days and limit workers to only essential tasks when the temperature or wind-chill values drop. When it's dangerously cold, workers should utilize more frequent check-ins and be trained to detect and act on cold-related first aid emergencies.

## Is there personal protective equipment (PPE) we should wear?

In cold weather, PPE is best paired with engineered and administrative controls. Sending an unknowing worker out with only a warm jacket and good mittens is unsafe. Sending that same worker out with the right clothing and the knowledge to make good decisions about working in the cold is a much safer option. Supervisors and workers need to know their exposure limits and have ample opportunities to rest, rehydrate and warm up.

Having a good working knowledge about the challenges that come with working in cold temperatures or extreme winter weather is valuable. Evaluating those challenges and putting a safety plan into action is a great way to ensure everyone works safely through these upcoming winter months. ■



**Alberta Farm Safety**  
**Alberta Agriculture & Rural Development**  
 1201 10320 - 99 St.  
 Grande Prairie, AB T8V 6J4  
[agriculture.alberta.ca/farmsafety](http://agriculture.alberta.ca/farmsafety)

**Kenda Lubeck**, Editor  
 Farm Safety Coordinator  
 Grande Prairie  
 P: 780-538-5606  
 E: [kenda.lubeck@gov.ab.ca](mailto:kenda.lubeck@gov.ab.ca)

**Nicole Hornett**  
 Farm Safety Coordinator  
 Airdrie  
 P: 403-948-8524  
 E: [nicole.hornett@gov.ab.ca](mailto:nicole.hornett@gov.ab.ca)

**Laurel Aitken**  
 Farm Safety Coordinator  
 Leduc  
 P: 780-980-4230  
 E: [laurel.aitken@gov.ab.ca](mailto:laurel.aitken@gov.ab.ca)

**Raelyn Peterson**  
 Farm Safety Coordinator  
 Grande Prairie  
 P: 780-538-5633  
 E: [raelyn.d.peterson@gov.ab.ca](mailto:raelyn.d.peterson@gov.ab.ca)

**“Precaution  
 is better  
 than cure.”**

– Edward Coke

# 21<sup>st</sup> Century Homesteading Permaculture in the Peace Country

Continuing  
Education  
GPRC

**Come and hear from these speakers, as they share  
the knowledge of their fields!**

**KEYNOTE SPEAKER Kevin Kossowan** (Edmonton) will touch on his experiences with intensive urban gardening, operating an urban farm, foraging and other wild foods, urban hen keeping, bee keeping, root cellaring, home butchery, and so on. Kevin will also offer a session on reinventing the (urban) food system.

**Claudia Bolli** (Edmonton), Master Organic Gardener, teacher and owner of Wild Green Gardening Consulting will talk to us about the principles of Permaculture; a design method for a sustainable way of life, along with Johanne Kemp (Wembley) who will show us through pictures, the benefits of practical permaculture - the art of diversity and conservation.

**Ken Dies** (Fairview), avid amateur in the art of mushroom harvesting, will take us through a pictorial guide on how to Harvest Wild Mushrooms within the three prairie provinces.

**Wendy Smith** (Beaverlodge), owner of Heritage Farm Nursery, and editor of Rural Routes magazine. Learn how to grow your own food in the north with Wendy. In this hands-on session, you will plant a variety of HEIRLOOM tomatoes and herbs to take home.

**Eric Stromgren** (Instructor with Commercial Beekeeping Program, GPRC Fairview Campus). This too, will be a hands-on session where participants will learn how to take bees' wax and turn it into lip balm and/or hand cream!

**Cathy Newhook** (Beaverlodge) President of the West County Watershed Society. Cathy will discuss the importance of water management for your small farm or acreage.

**Don't miss this interesting & informative event!  
REGISTER TODAY!**

Questions? Contact Event Coordinator Kamie Currie

[kacurrie@gprc.ab.ca](mailto:kacurrie@gprc.ab.ca) • 780-251-0119

# *Producer Learning Day*

## Shelterbelts, Growing Forward 2 & Environmental Farm Plans

Join us in  
Eureka River  
Tuesday  
March 10, 2015  

---

9am – 3pm  
Eureka River  
Hall

\$25/member, \$40/pair  
\$35/non-member, \$50/pair  
~ Lunch Included ~

Call Stacy to RSVP  
780-835-6799

- \* Hear from the Agroforestry & Woodlot Extension Society about the benefits of Shelterbelts
- \* BSE Surveillance Program
- \* Environmental Farm Plan Workshop
- \* Get an update on Growing Forward 2, and PCBFA staff will be on hand for assistance with Growing Forward 2 applications





## 2<sup>nd</sup> Annual Conference & AGM

*Prevention Inspired; Alberta Protected*

**Thursday, March 12<sup>th</sup>, 2015**

**9:00 am – 4:00 pm** (registration opens 8:30 am)

Lacombe Memorial Centre (Centennial North)

5214 – 50 Ave, Lacombe AB

### Keynote

What makes invasive species initiatives successful?

Andre Asselin, Alberta Water Council

### Have you wondered?

Are Russian olive trees invasive?

Are there opportunities to work with industry?

What is the Alberta government doing about aquatic invasives?

Are there invasive fish?

Is there a place for drones?

When will we see new control options?

Are there North American programs targeting recreationists?

***REGISTER FOR THE CONFERENCE AND FIND OUT!!!***

***This Conference is a great opportunity to Learn,  
Network and Gain New Ideas!!!!***

**Register Now!!**

**Register by March 6<sup>th</sup> and SAVE.**

**Members: \$73.50**  
(\$70 + GST)

**Non-Members:**  
**\$94.50**  
(\$90 + GST)

**NO REGISTRATIONS  
AT THE DOOR**

After March 6<sup>th</sup>

Registration increases to

Members: \$95.55  
(\$91 + GST)

Non-Members: \$116.55  
(\$111 + GST)

Get your 2015 membership and save on all AISC events.  
([www.abinvasives.ca](http://www.abinvasives.ca))

Conference sponsorships available to promote your organization!!!!

Pesticide Applicator credits have been applied for.

For more information:  
[info@abinvasives.ca](mailto:info@abinvasives.ca)  
[www.abinvasives.ca](http://www.abinvasives.ca)

**Media:**

*This is a great opportunity to identify some interesting stories!! No need to register. Please attend!!*



**Alberta Invasive Species Council – 2<sup>nd</sup> Annual Conference and AGM**  
**Lacombe Memorial Centre, Lacombe Alberta, March 12<sup>th</sup>, 2015**

<b>Time</b>	<b>Min</b>	<b>Agenda</b>	<b>Presenter</b>
8:55	5	Opening & Welcome	
		<b>Session 1: Invasive Species Programs</b>	
9:00	45	Common elements of Success	Andre Asselin Alberta Water Council
	30	Stopping Aquatic Invasives in Alberta	Kate Wilson ESRD
10:15		<b>Session 2: Invasive species</b>	
	45	Invasive Fish	Dr. Brian Heise TRU
	45	Russian Olive Invasiveness	Liana Collette
12:00	45	<b>Lunch</b>	
12:45	60	AISC AGM	Oscar Anderson Chair
1:45		<b>Session 3: New Management Tools</b>	
	30	Herbicide research for invasive weed control	Don Hare DAS
	30	Using Drones	Steve Myshak Ventus Geospatial
2:45	15	<b>Coffee</b>	
3:15		<b>Session 4: Stopping the Spread</b>	
	30	Working with Industry to stop Baby's-breath	Sean Allen
	30	Play Clean Go; stop invasive species in your tracks	Kelly Cooley
4:00	5	<b>Wrap up</b>	

## SCHEDULE OF EVENTS

### THURSDAY MARCH 12

Show Hours: 10:00am – 5:00pm

10:00 a.m. – 5:00 p.m.:

Western Art Display "Artcetera" – Under Gordon Badger Stadium

10:00 a.m. – 5:00 p.m.:

Farm Safety Display in Keddies Korner

10:00 a.m. – 5:00 p.m.:

Petting Zoo – Drysdale Center

10:00 a.m. – 10:45 a.m. (Room 3):

BSE & Current Market Controls

10:00 a.m. – 11:00 a.m. (Room 2):

Addressing the elephant in the field - protecting the Peace Country from herbicide resistance - Bayer CropSciences

11:00 a.m. – 11:45 a.m. (Room 3)

Men at Risk with Tom Pura & Barb Campbell of the "Men at Risk" program at the Suicide Prevention Resource Centre in Grande Prairie

11:15 a.m. – 11:45 a.m. (Room 2)

Dealing with Overhead Powerlines - ATCO Electric

1:00 p.m. – 3:00 p.m. (Room 2)

Mobile Technologies in Farming with Peter Gredig

### FRIDAY MARCH 13

Show Hours: 10:00am – 5:00pm

10:00 a.m. – 5:00 p.m.:

Western Art Display "Artcetera" – Under Gordon Badger Stadium

10:00 a.m. – 5:00 p.m.:

Farm Safety Display in Keddies Korner

10:00 a.m. – 5:00 p.m.:

Petting Zoo – Drysdale Center

9:45 a.m. – 11:45 a.m. (Room 2):

Land Acquisition & Planning for the Future (Fred Mertz from "Farming for Freedom").

*Learn how to address the growing concern of young farmers accessing land and tax planning for farm business*

10:00 a.m. – 10:45 a.m. (Room 3):

Shelter Belts with Jeff Trenton

11:00 a.m. – 11:45 a.m. (Room 3):

Weed Control Techniques - Monsanto

1:00 p.m. – 2:45 p.m. (Room 2):

Canadian Grain Commission Discussion with Jim Smolik

2:00 p.m. – 2:45 p.m. (Room 2):

Farm Succession: Avoiding the Pitfalls (Jonathan Small/MNP) - Jonathan will

*describe the top five reasons why farm succession fails, and how to avoid those pitfalls.*

Jonathan Small, BSc, PAg

*Jonathan is a Farm management Consultant with MNP's Red Deer office. With over 33 years experience, Jonathan has worked internationally, from the UK to Canada. Jonathan's focus is on primary agriculture, the farming industry, and related areas, spending more than half his time working with farm families on their transition.*

3:00 p.m. – 3:45 p.m. (Room 2):

Tax Advantages of the Family Farm (Tracy Leishman/MNP). *This presentation will look at navigating the unexpected tax costs in a family farm.*

Tracy Leishman, CA

*Tracy is a partner with MNP's Taxation Services group for the Peace Region. Tracy has more than 17 years experience working with family owned and managed farm businesses in the areas of personal and corporate tax planning, business reorganizations and estate and succession planning.*

4:00 p.m. – 4:45 p.m. (Room 2):

Agristability and Agriinvest and MNP's Risk Management Projector (Dwayne Peters/MNP). *Dwayne will provide an overview of how recent changes to AgriStability and AgriInvest programs will impact your farm on a go forward basis. He will also introduce a product that MNP has developed to assess a farms tolerance to risk while employing risk management tools such as crop insurance, AgriStability and GARS*

Dwayne Peters, CA

*Dwayne is MNP's Regional Agriculture Leader for the Peace Region and the Farm Income Programs Provincial Service Leader for Alberta. He grew up on a farm in Southern Saskatchewan and has been practicing in agriculture for over 16 years.*

## 2014-2015 BOARD OF DIRECTORS

President

Ross Mather

*Agricultural Society Representative  
Horse Program Director*

Farm Family

Display

Cattle Program

Eric Stamp

Kurtis Nichiporik

Jason McQuaig

*(Committee Member) Mike Klassen*

Livestock

Education Program/Seminars

Sponsorship Director

Western Art Display

General Manager, Evergreen Park

Asst. General Manager, Evergreen Park

*(Committee Member) Tina Finch*

Neil LeClerc

Brad Haukedal

Laurel Mather

Dan Gorman

Denise Greenlaw

Past President

Dave Martin

Vice President

Kelvin Kirkham

*Advertising & Public Relations Education*

Horse Program

*(Committee Member) Mavis Cunningham*

Youth Program – Education

Jason Anderson

Youth Program – Director

Linda Ogden

Budget & Finance - Facilities

Clint Steele

Promotions & Program

Sonja Raven

*(Committee Member) Tracelle Hinze*

# Dugout Workshop

Tuesday, March 17, 2015

1pm-4pm

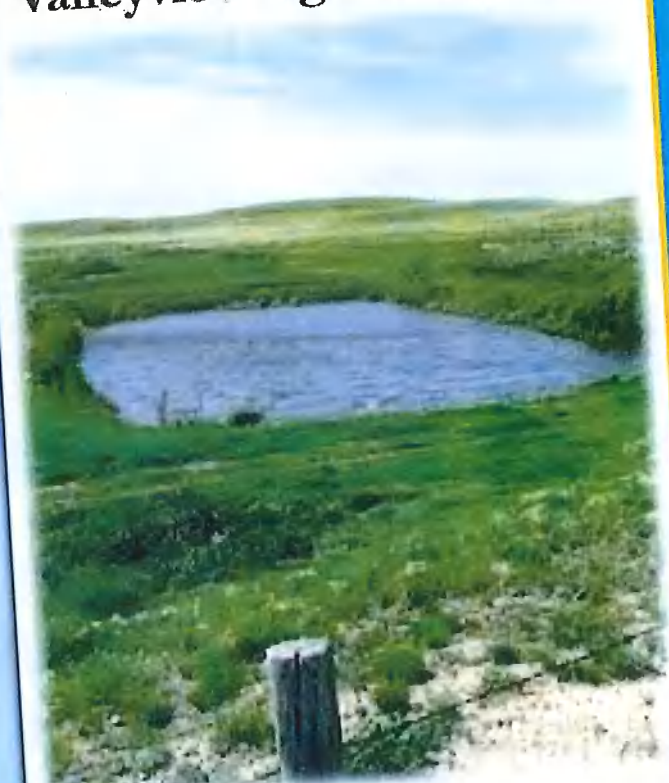
Valleyview Ag Society Hall

Join us to learn from  
Alberta Agriculture Water

Specialists on:

- ~ Dugout design,  
construction & aeration
- ~ Dugout biology
- ~ Dugout water quality  
troubleshooting
- ~ In-house treatment of  
surface water
- ~ Growing Forward 2 Programs  
for dugout projects

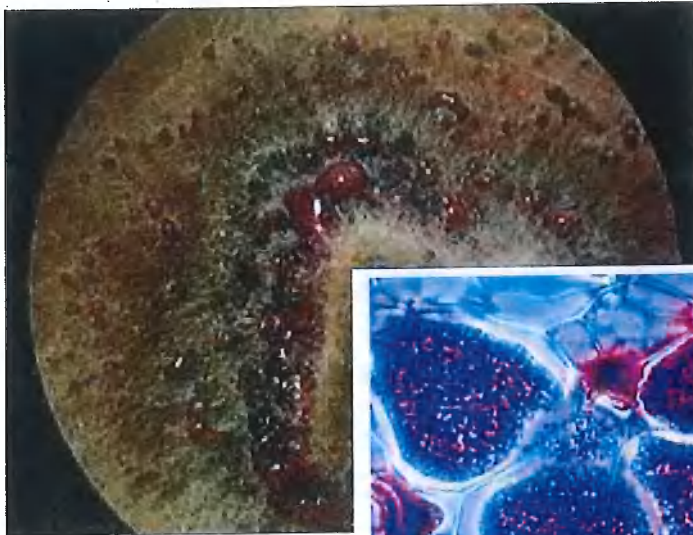
Plus an Update on Growing  
Forward 2 & PCBFA's Whole  
Farm System's Project!



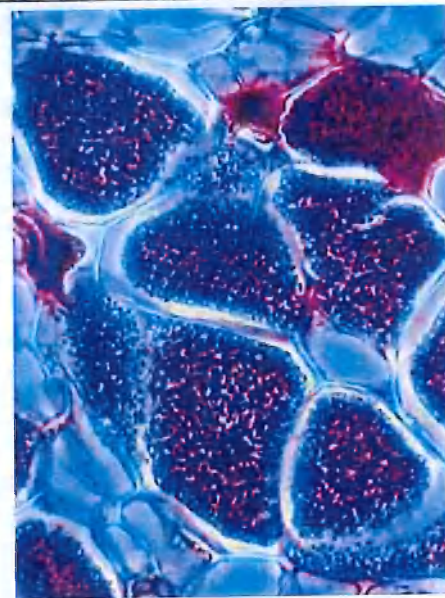
Cost:

- ~ \$10/member, \$15/farm pair
  - ~ \$15/non-member, \$25/farm pair
  - ~ Coffee & Snacks Included ~
- RSVP to Stacy @ 780-835-6799





Above: *Blackleg fungus* by Canola Council of Canada



Right: *Plasmodiophora brassicae* (Clubroot) by Molecular expressions

# MARCH 19 VIRULENT BLACKLEG AND CLUB ROOT

## Murray Hartman and Ralph Lange

Murray has been with Alberta Agriculture and Rural Development since 1993 and is the Provincial oilseed specialist, he is an agronomist specializing in Soil Fertility.

Ralph is a Program Leader with Alberta Innovates and offers expertise in controlling and finding solutions to blackleg.



A new strain of  
Clubroot was  
discovered in  
2013

Find out more  
about these pests

Protect your farm

Maintain  
productivity

## DUNVEGAN MOTOR INN

March 19 at 2:00 pm

For more information:

Clear Hills County  
780-685-3925  
MD of Peace #413  
780-338-3845  
MD of Fairview #136  
780-835-4903

**FREE**

# Information Seminars



Log Cabin

Thursday, March 19

At the Log Cabin

Time	Topic	Session Description	Sponsor & Speaker
12:45—2:00 pm	Improving Combine Capacity in Cereals and Canola	We will discuss new designs and concepts for harvesting with rotary combines and review the results of the PAMI test in October 2014. Also we will introduce a modular (box) system of concave and separator grates, as well as debunking some old myths on threshing.	Sunnybrook Welding Gerald Foster, Ag Engineer, President, Sunnybrook Welding
2:15—3:15 pm	Twister Bins and Grain Guard Aeration	Product Presentations: Features of Twister bins and Grain Guard Aeration	Agrowth International Rene Deschamps
3:45—4:45 pm	Soil and Plant health, through proper nutrition we can grow bigger and nor nutrient dense crops.	Terry will talk about soil health pH and the effects it has on crop nutrient uptake. I will also describe the differences in some granular and liquid fertilizers and why we should use some different fertilizers in different situations. I will also take questions and chat about specific soil challenges. <b>Bring your soil sample results with you</b>	ENR Distribution Terry Bonertz

**FREE**

# Information Seminars



Log Cabin

Friday Morning, March 20

At the Log Cabin

Time	Topic	Session Description	Sponsor & Speaker
8:30-9:45 am	Project N!	Farmers are building a nitrogen plant! Learn how you can participate in and profit from this project, while sourcing your fertilizer at whole sale prices. Find out why farmers across the country are getting on board. <b>Complimentary breakfast shall be served.</b>	Farmers of North America Terry Drabiq Allan Beaton
10:00-11:00 am	Elemental Sulfur in the Peace	Mr. Elston Solberg- M.Sc., Soil Science University of Alberta. B.Sc. Agronomy, University of Alberta. Elston brings over 25 years of Elemental Sulphur Research Expertise through his work as Head Cereal Specialist and Research Agronomist with Alberta Agriculture.	Bio-Cycle Nutrient Solutions LTD Mr. Elston Solberg, M.Sc., B.Sc
11:00—1:00 pm	Clubroot and Virulent Blackleg	Information Meeting with Ralph Lange of Alberta Innovates Technology Futures and Murray Hartman of Alberta Agriculture and Rural Development <b>Complimentary lunch shall be served.</b> <b>Pre-registration required. Phone 780-837-2221 ext115</b>	Peace Region ASB Ralph Lange Murray Hartman

**FREE**

# Information Seminars

Friday Afternoon, March 20

At the Log Cabin



Log Cabin

Time	Topic	Session Description	Sponsor & Speaker
1:15- 2:15 pm	Twister Bins and Grain Guard Aeration	Product Presentations: Features of Twister bins and Grain Guard Aeration	Agrowth International Rene Deschamps
2:30- 3:30 pm	Improving Combine Capacity in Cereals and Canola	We will discuss new designs and concepts for harvesting with rotary combines and review the results of the PAMI test in October 2014. Also we will introduce a modular (box) system of concave and separator grates, as well as debunking some old myths on threshing.	Sunnybrook Welding Gerald Foster, Ag Engineer, President, Sunnybrook Welding
3:45 -4:45 pm	Production Cost Insurance	We're a Western Canadian company, based in the heart of one of the country's largest agriculture communities. We know the industry and understand your business. We are here because you are.	Global Agrisksolutions Mark Gottselig
4:45 - 5:45 pm	Soil and Plant health, through proper nutrition we can grow bigger and nor nutrient dense crops.	Terry will talk about soil health pH and the effects it has on crop nutrient uptake. I will also describe the differences in some granular and liquid fertilizers and why we should use some different fertilizers in different situations. I will also take questions and chat about specific soil challenges. <b>Bring your soil sample results with you</b>	ENR Distribution Terry Bonertz

**FREE**

# Information Seminars

Saturday Morning, March 21

At the Log Cabin



Log Cabin

Time	Topic	Session Description	Sponsor & Speaker
9:45-10:45 am	Powerzone: Save money, reduce risk	PowerZone is a foundational toolset that requires a one time investment, and has a 10+ year lifespan. Come learn about this technology, how you can utilize it on your farm, and the 3:1 returns that growers are experiencing for an investment that is hard to say no to.	Agritrend Warren Bills, VP Geo Solutions – Agri-Trend
11:00 – 12:00 noon	Elemental Sulfur In the Peace	Mr. Elston Solberg- M.Sc., Soil Science University of Alberta. B.Sc. Agronomy, University of Alberta. Elston brings over 25 years of Elemental Sulphur Research Expertise through his work as Head Cereal Specialist and Research Agronomist with Alberta	Bio-Cycle Nutrient Solutions LTD Mr. Elston Solberg, M.Sc, B.Sc

**FREE**

# Information Seminars

Saturday Afternoon, March 21

At the Log Cabin



Log Cabin

Time	Topic	Session Description	Sponsor & Speaker
12:45-1:45 pm	Twister Bins and Grain Guard Aeration	Product Presentations: Features of Twister bins and Grain Guard Aeration	Agrowth International Rene Deschamps
2:00- 3:00 pm	Improving Combine Capacity in Cereals and Canola	We will discuss new designs and concepts for harvesting with rotary combines and review the results of the PAMI test in October 2014. Also we will introduce a modular (box) system of concave and separator grates, as well as debunking some old myths on threshing.	Sunnybrook Welding Gerald Foster, Ag Engineer, President, Sunnybrook Welding
3:15-4:15 pm	Impacts of the Modernization of Canada's Grain Industry Act	On December 9, 2014, the Government of Canada introduced the Modernization of Canada's Grain Industry Act. The bill will build on major reforms made to the Canada Grain Act in 2012. Among other things, the Bill will enhance producer protections and improve grain quality and grain safety assurance. This presentation will provide an overview of amendments to the Canada Grain Act and how they will impact Western Canadian producers.	Canadian Grain Commission Jim Smolik, Assistant Chief Commissioner, Canadian Grain Commission

# AROWRN Willow Harvesting Field Day (ARO01)

## Description

**Who?** Anyone interested in willow biomass production and applications (government, researchers, students, elected officials, industry service providers)

**Why?** Learn about fast growing woody biomass in the energy production chain. "Connecting the links in the fast growing woody biomass to energy production chain-growing the crop, environmental services and biomass end uses."

**Where?** Edmonton - Whitecourt - Camrose

- 7:30 am Bus leaves Northern Forestry Centre
- Introductions and updates en route
- 9:30 am Whitecourt Wastewater Treatment Plant Site
- Willow Harvesting Demonstration
- 11:00 am Travel to Camrose
- Presentations and lunch en route
- 2:00 pm Camrose Country Office
- Tour of boiler and chip system
- 4:00 pm Return to Edmonton
- 5:00 pm Tour ends - Northern Forestry Centre.

## Timetable

Dates	Times	Days	Cost	Instructor	Status	Campus
Apr 22 2015	7:30am-5:00pm	W	\$0.00	TBA	Available	Grande Prairie

[Register Now](#)

## Continuing Education

**Office:** M105  
**Phone:** 780-539-2975  
**Toll-free:** 1-866-378-WORK  
**Fax:** 780-539-2791  
**Email:** [ce@gprc.ab.ca](mailto:ce@gprc.ab.ca)  
**Web:** [Visit Homepage](#)

GPRC Grande Prairie  
10726 - 106 Ave  
Grande Prairie, Alberta

FB  
TW

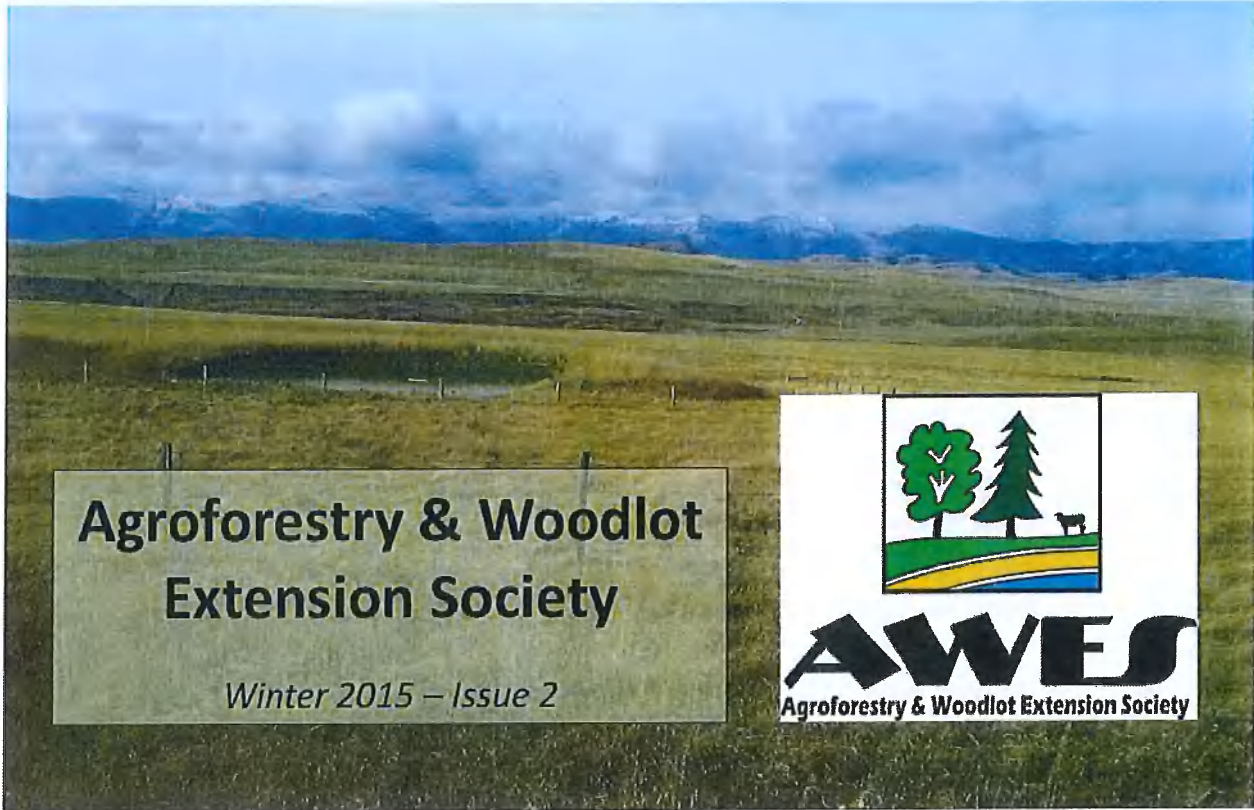




## Seeding the BioEconomy: Growing Alberta BioClusters

Event Program Thursday March 12, 2015	
Time	Activity
8 am	Registration
8:30 am	Welcome & Thanks
8:40 am	<b>Presentation from the Bio-Industrial Opportunities Branch</b> <i>David Fielder, Senior Scientist</i>
9 am	<b>Peter Laybourn, Chief Executive – National Industrial Symbiosis Program</b> <i>Delivering the Circular Economy with Industrial Symbiosis</i>
10 am	Networking Break
10:30 am	<b>Southern Alberta BioCluster Insight</b> Chris Perry, GrowTEC, Chin, AB
11:00 am	<b>Morley Kjargaard – Industrial Clustering Manager, Alberta Innovation and Advanced Education</b>
11:15 pm	<b>Innovator Showcase</b> Moderation by Wendy Schneider with Unstoppable Conversations
12 pm	Lunch
1:00 pm	<b>Alberta BioCluster Insights - Moderated Panel</b> Mike Duckett, Stemia, Chin, AB Elizabeth Huculak, Sustainability Resources, Wheatland County BioCluster Mike Szeman, Biocomposite Group Christian Felske, Edmonton Waste Management Centre
2:00 pm	<b>Economic Development via BioClusters</b> Brett Doney, President and CEO, Great Falls Development Authority
2:30 pm	Concluding Remarks
2:45 pm	Break to travel to Agri-Food Discovery Place
3 pm	Tour of Agri-Food Discovery Place
4:30 pm	Tours and seminar conclude

The following is a biannual, organizational newsletter for the Agroforestry and Woodlot Extension Society. If you are interested in receiving this newsletter in the future please do not respond to this message. If you would like to stop receiving this newsletter, please email [info@awes-ab.ca](mailto:info@awes-ab.ca) with the message "Unsubscribe." Thank you for your time and interest.



#### TABLE OF CONTENTS

- **President's Message**
- **Project Manager's Message**
- **Project Updates**
- **Continued Support: Our CIF-AWES Partnership**
- **A Word From a Happy Customer**
- **Finding Better Ways to Grow Natural Services**
- **Seeing Something Old in a New Way - A Story of Wild Bees in Alberta**
- **Board Meetings**

#### IN OTHER NEWS

#### Upcoming Events

## President's Message



### **AWES and the Benefits for Forestry in Alberta**

by Mikel Jackman, AWES President

Many forest companies in Alberta purchase wood from private woodlot owners either directly from the landowners, or at arm's length from logging contractors who purchase the wood from the landowners. While a significant volume of wood is harvested annually from private land, the reality is that very few woodlot owners in Alberta know what they have or have a plan to manage it.

Most of the timber harvested from private land in Alberta today is still to facilitate land conversion from forest to agriculture. While the intention of public land sales in Alberta to private ownership is exactly for that purpose, AWES, believes that agriculture and forestry can not only



### Shelterbelt Planning & Establishment

Where: Hazel Bluff Hall, Weststock County

When: February 26, 2015

Come out for a cup of coffee and learn about species selection, set design, plastic mulch, site preparation, tree pests and diseases. Click here to view the event poster!



### West-Central Forage Association AGM & Supper

Where: Entwisle Community Hall

When: March 5, 2015

Registration: \$30 a person

Event includes a social supper at Bully Food Truck Inc, and a round table discussion to end the evening. Click here for more details or to register!



occur on the same landscape, but with knowledge and proper planning, they can complement each other both ecologically and economically.

### Daishowa-Marubeni International Peace River Pulp Division

(DMI), the company that I represent, has purchased over 2 million m3 of private wood in Northwestern Alberta in the last decade to be processed at our pulp mill. While making cost effective pulp is our primary target, it is important to us that all of the fiber we utilize comes from lands that have been managed utilizing sound environmental practices that promote sustainability for the forest and farm resources.

Our goal as a company is to assist private woodlot owners in making informed decisions. By supporting AWES, we ensure that these land owners have access to an independent organization that can provide them with knowledge, tools and support to make sound management decisions regarding their woodlots. By participating in AWES, we benefit from the knowledge gained from other AWES members and partnerships that help our staff develop professionally as individuals, providing the best service for our company. and This relationship facilitates continual improvement on our management practices to better serve public interests that we are charged to manage.

### Project Manager's Message

by Jeff Renton, Project Manager

Welcome all to our second AWES newsletter! It sure has been an interesting and challenging time since we updated you last August.

We have had a strong year for our tree planting and extension programs, an increased awareness of our organization, and a completed strategic plan. With increased demand for our services and a turn in current economic issues, we have seen the need in diversifying our income sources with non-government grants in addition to our contracting services. You can rest assured that we have wasted no effort in these avenues, and of-course always encourage the board's input.



Since August, we have delivered a combination of 18 workshops, field tours, and E-Lectures. Our staff have been very busy working on both the tree planting and extension fronts. Our workshops covered topics including the importance of native pollinators, riparian planting, tree

## Peace Country Classic Agriculture Show

Where: Evergreen Park  
TEC Centre

When: March 12 -14,  
2015

Show hours:  
Thursday/Friday 10  
a.m. to 5 p.m. &  
Saturday 10 a.m. to 4  
p.m

Join us for one of the  
biggest show of the  
season at Evergreen  
Park! The Agri-Show  
features hundreds of  
companies that cater  
to the agricultural  
industry. For more  
information on this  
exciting event please  
click here.

## Firewood Workshop



Where: Dovercourt  
Community Hall

When: March 10, 2015  
10:00 a.m. – 3:30  
p.m.

Special note: You must  
pre-register for this  
workshop by March 6

This wood energy  
workshop will provide  
participants with the  
opportunity to interact  
with firewood/  
bioenergy experts on-  
site. It will include an  
outdoor component so

pruning, sawmilling, and establishing fruit harvesting  
operations spanning an area just north of the American  
border to Fort Mackenzie. For this reason I'm grateful for  
having our new staff (Curtis and Courtney) and the great  
power of the Internet. If you are interested in any of these  
subjects, and would like one held in your area, please let  
me know.

We have also been developing our tree planting projects for  
the upcoming planting season. Currently we have two  
different streams based on funding and mandate; riparian  
planting and upland planting, (see Riparian Planting Project  
Update). The two larger upland planting sites will be in  
**Parkland County**, one NCC property leased by the **Wildlife  
Rehabilitation Centre of Edmonton**, and the other, an  
ALUS project on the Mayatan Lake Complex near Highway  
770. Both of these projects have been an excellent  
opportunity to work with a variety of enthusiastic  
stakeholders and engage the public at large.

Also, as many of you may be aware, October was a big  
month for me, as I was given the **Prince of Wales Award  
for Sustainable Forestry** by Geraint Richards, Chief  
Forester for Prince Charles. I would like to thank all those  
for their congratulations. I hope to visit the Highgrove House  
in Gloucestershire someday, only after receiving a personal  
invitation by His Majesty. If such a foray were to happen, I  
would be most delighted to explore the mighty woodlot of  
the Highgrove Estate, which would surely be discussed in an  
AWES newsletter following shortly thereafter.

Lastly, all the aforementioned are made possible by strong  
partnerships and our membership. So I would like to thank  
everyone for their hard work and support in our past and  
future endeavours.

Our staff is always interested in hearing from both our  
members and partners, so please feel free to contact us on  
your interests, and perhaps an article idea that you may  
have for future newsletters articles or factsheets.

## Project Updates



### Riparian Planting Research Project

by Curtis Vieville,  
Technician

This past month I have  
been working feverishly  
to meet with potential

and current participants in the program, documenting new  
planting sites, and drawing planting plans. Now the second  
phase of the 2015-planting project will be starting soon,

please dress appropriately for warmth and safety. [Click here for more details or to register!](#)

## Articles & Factsheets

AWES, in collaboration with the Canadian Institute of Forestry, will be publishing new articles and factsheets focused on the importance of native pollinators, forest grazing and the retention of forests in pasturelands.

These documents will provide information on how to develop artificial habitat to preserve and restore existing areas, the significance of native pollinators to ecosystem health, agriculture, and private landowners and much more. To view these articles, or to read other factsheets like them, [click here](#).

## AWES Project Update Photo's



A group shot of all the amazing volunteers at the Nature Conservancy of Canada "Willow You One" volunteer event on November 15, 2014.

harvesting. We will be looking for partners in the coming months to help locate and harvest thousands of dormant willow and dogwood from stands in the counties we are operating in. Most of these cuttings will be kept here at CDC North in snow caches or the facility freezers.

We are aiming to plant at twelve locations this season. Most of which will be in the central Alberta area (Red Deer, Clearwater, Lacombe), and several areas northwest of Calgary and Grande Prairie. Each site will see the transplanting of willow, dogwood, or poplar, in conjunction with tree and shrub seedlings planted along streambanks and adjacent lowland areas.

Our plantings along waterbodies will provide clients with a 5-25m riparian forest buffer. These buffer sites host AWES research, demonstration and the enhancement of streambank areas for better ecological functionality.

In conjunction with planning logistics and developing planting design and technique, we are also actively connecting with other professionals in the field of riparian planting research for their information and advice. So far our planned methodology for preparing and planting willow cuttings is consistent with the planting practices of the three specialists we have conversed with. Our new connections include the NAIT Boreal Research Institute, the Canadian Wood Fibre Centre, and Chickadee Reclamation Services. Further research and networking is to be done in the next week before writing an operational guidelines document for field methodology in conducting this season's Riparian Planting Research Project.

In the next couple of months a report is going to be prepared to summarize the findings and lessons learned in the 2014 riparian planting season. A handful of sites still need to be assessed before the end of the dormant season to complete the spruce seedlings portion of the dataset. The report will be available before May of this year complementing the guidelines aforementioned.

Part of the funding for this project is set aside for riparian extension documents and workshops. I had the pleasure of leading three such workshops last fall. Two of which were on behalf of AWES and the other for our partners at Cows and Fish. These planting workshops have been directed towards youth and families consisting of groups of 15-40 people. The workshop consists of two parts, harvesting and planting. It can be completed in one to two hours depending on willow plant availability and soil density. An example of the AWES planting workshop can now be viewed on the Internet via Youtube.com, under "**RockyDocs - Wind in the Willows.**"



Curtis Vieville leading a demonstration at the "Explore More" environmental youth education day on November 20, 2014 at a Camrose elementary.

## Continued Support: Our CIF-AWES Partnership

by Dana Collins, *CIF Acting Executive Director*

Through the development of strong, successful partnerships, the Canadian Institute of Forestry (CIF) and its key affiliates have developed a successful record of implementing forest science, extension and knowledge exchange programs, products and services. While the application is consistently based on sound science that informs policy and improves planning and research, it is the network of maintained partnerships that enable for a stronger, local presence, and the ability to practically apply meaningful results at regional and national scales.

Shortly after connecting with AWES, it was immediately evident the relationship would be a long-term venture. With the 'right people', including a strong leader in Jeff backed by a competent staff, along with common goals and objectives in providing extension services to promote sustainability. Partnering with AWES was the perfect opportunity to learn together by sharing ideas, expertise, experience, and successes – after all, two heads are better than one!

To date, the joint extension and knowledge exchange programs developed between AWES and the CIF have seen great success on both ends. Last fall, the CIF partnered with AWES for a 6-week long electronic lecture series, entitled "Lots about Woodlots: The 'Tree-Ple' Threat". The average number of participants tuning in on a weekly basis ranged between 400-700 people! For the CIF, this validated the importance of our program in providing an accessible form of continuing education, professional development and competency training; for AWES and its partners, this project enabled for professionals dedicated to woodlots in forestry and agriculture to share their research and science to a broad, interdisciplinary, national audience.

One of the more long-lasting collaborative efforts between AWES and the CIF that has greatly enhanced extension work and knowledge exchange for both organizations has been a shared intern. The CIF has run a successful internship program for years – funding multiple one-year internships each fiscal year. With interns based in Northern Ontario, they are exposed to the interdisciplinary practices of forest science and directly engaging with industry, government, academia, and other not-for profits, which has allowed these young professionals to kick-start their careers in forestry and natural resources management.

The long-term strategy is to expand the scope of placement for this youth internship program beyond Ontario. The idea of a shared intern with AWES met all of the goals of this

program, both long- and short-term. Currently we have Courtney Bennett, who shares her time between the two organizations. Jeff and I keep Courtney busy working on everything ranging from hardwood challenges in eastern Canada, to tree-nurseries in Nepal, to native pollinators in Alberta. AWES and CIF are not the only major beneficiaries. These diverse experiences coupled with the increased opportunity for networking have resulted in incredible professional and personal growth in Ms. Bennett.

When done with the right people, partnerships have the ability to enhance mandates set by collaborating organizations and also the skills of people who work within them. Based on the past successes and the relationships that have been built, there is plenty to come from this AWES-CIF tag-team. At the CIF, we look forward to further engaging with the AWES membership, addressing challenges and opportunities, and increasing awareness of agroforestry and woodlot management in Alberta.

## **A Word From a Happy Customer**

by Stephanie Bennett, Cochrane High School Teacher

2014 marked the third annual Forest Cleanup held in Rocky View County, but instead of heading up into the foothills to remove dead woody material from old growth forest, students were led by AWES technician Curtis Vieville down into the lowlands to get their hands dirty replanting willow along the Grande Valley Creek. This event was part of the extension deliverables in-part of the AWES Riparian Planting Research Project.

Stephanie Bennett, Cochrane Highschool teacher (no relations with Courtney Bennett, but sister in-law with Heidi Bennett (our client). What a coincidence.) was reached by AWES to get a sense of the impact we have on providing these kinds of workshops to youth.

"I have been conducting a grade 11 remediation research project for the past three years. This year was unique in that we had a representative from the Agroforestry & Woodlot Extension Society, Mr. Curtis Vieville, with us. His presence and expertise gave much credibility to our method and observations [for our class lab project] with the remediation of a riparian ecosystem in the Grand Valley Creek, just north of Cochrane, AB. My students gained great insight in the skills of transplanting and [riparian restoration].

My goal is threefold; make their learning relevant, increase their sense of civic responsibility and to have them understand the science behind remediation. All three goals

were achieved with this field trip to the Grand Valley Creek including the help from AWES.”

Stephanie shared with us, two informational videos prepared by Rocky View Schools. The first **video** features our fieldtrip last fall at Grande Valley Creek and the second **video** is a presentation by one of Cochrane High School’s student groups to the School Division on Experiential Learning. Search the phrase “RockyDocs - Wind in the Willows.” in YouTube.

## Finding Better Ways to Grow Natural Services



by Ken Lewis, *Red Deer County Conservation / ALUS Coordinator, AWES Treasurer*

In 2014, Sheldon Burns took a small piece of his pastureland (southwest of Sylvan Lake) and planted it with white spruce and

willow cuttings. He decided that the land, which is sandwiched between a highway and a channelized stream, was to be part of an Alternative Land Use Service (ALUS) project.

Here’s the overall planting plan:

### AREA PLANTING PLAN

- 1 Plant white spruce in 2014, with different grass control methods (see below)
- 2 Plant white spruce in 2015
- 3 Plant white spruce (at higher, drier sites in 2014, with no grass control) and plant willow stakes in lower, wetter areas.
- 4 Plant willow stakes
- 5 Creek Corridor: plant willow stakes along and beside the creek banks

At the same time of the decided planting, Red Deer County was working with AWES on a project to find best practices for planting trees in riparian areas and adjacent pastureland. Seeing the potential in the ALUS project, AWES got involved with Sheldon’s project.

In the spring of 2014, we went out and cut locally growing willows, and AWES sourced some white spruce saplings adapted to Sheldon’s site. In May, Sheldon went into Planting Area 1, and applied glyphosate to randomly placed micro-sites to knock back the grass.

The spruce trees and willows were planted by professional



planters hired by AWES, in June, according to the plan described in the table above. In Planting Area 1, the planters put the spruce trees into the micro-sites that had been treated with glyphosate.

After the trees were planted, staff from Red Deer County went into Planting Area 1 and applied three different mulching treatments to some of the spruce trees: a) Bark Mulch only, b) Plastic Mulch only, and c) Bark Mulch and Plastic Mulch. The rest were left as being treated only with glyphosate, with no bark mulch.

Over time, we will monitor the survival and growth of these trees, to see the impacts of the five unique treatments (no grass control, grass control with glyphosate only, grass control with glyphosate + bark mulch, grass control with glyphosate + plastic mulch, and grass control with glyphosate + bark mulch + plastic mulch).

If you have questions about this project please contact me at [klewis@rdcounty.ca](mailto:klewis@rdcounty.ca).

## Seeing Something Old in a New Way - A Story of Wild Bees in Alberta

by Gary Bank, *Board Member*

It was roughly ten years ago when I heard my first presentation on native wild bees and that was the start of seeing the agricultural landscape in a different way. It was surprising to learn how the success of wild bees was so dependent on the size, quality and number of patches of non-cropped areas. The non-cropped areas included woodlots, shelterbelts; grassed ditches, willow rings and many other seldom recognized features in the agricultural landscape. Hearing this presentation, from an Agriculture Canada scientist, sent my work and that of a colleague off in a direction that previously hadn't been imagined.

Alberta has 299 species of bees that live in its prairie region and they all contribute to the richness and success of our ecosystems. While the wild bees spend a good portion of their lives in non-cropped areas they also spend hours and hours tirelessly pollinating adjacent agricultural crops. The agricultural crops – like canola, sunflowers and saskatoons – we depend on for food. Others, like alfalfa and clovers, are livestock forage. And still others flowering plants get pollinated, produce seed, and flourish in their own right and support wildlife and other ecosystem services we benefit from.

As we went about our study of wild bees, we spent lots of time in and near bee habitat, we had many chances to see interesting things and ask questions. We noticed that all

bees need flowers for the pollen and nectar they offer. They need those flowering trees, shrubs and forbs when they are actively foraging from their nests. For bumble bees (and honey bees), this extends from early April to well into September. Bees also need to be able to access the flowers. Here distance matters.

Bees forage most efficiently when they are nearest to their nests. The further they have to fly, the fewer eggs they will lay and be able to provision with pollen. For the most part, the bigger the bee, the further it will fly, but many species of native bees only fly a few hundred metres at most from their nests. So what is obvious is that as trees and other non-cropped habitats with flowering plants are removed to make fields larger and more "efficient", bees are dealt a double whammy. In fact, if a farmer grows a crop that benefits from insect pollination, or benefits from natural pest suppression services, he or she has a vested interest in the habitat that supports those services.

When seen in this way, field margins, shelterbelts, woodlots, willow rings and other riparian areas become rather than a nuisance, a treasure.... something worth protecting and even enhancing. All that is required is to see something old in a new way.

## **Board Meetings**

Below are the next scheduled AWES Board meeting with optional alternative dates. Note that all members are welcome and encouraged to attend to non-AGM meetings.

March 6, 2015 - 8:30am - 12:30pm, CDC North, Edmonton, AB

June 12, 2015 - 8:30am - 1:00pm, Location TBA, Red Deer County, AB

[Edit your subscription](#) | [Unsubscribe](#)

Agroforestry & Woodlot  
Extension Society  
17507 Fort Road  
Edmonton AB

## **Malathion Re-evaluation**

**From:** Robert P Martin [<mailto:robert.p.martin@hc-sc.gc.ca>] **On Behalf Of** PMRA INFOSERV  
**Sent:** Monday, March 02, 2015 3:42 PM  
**To:** Barry Yaremció  
**Subject:** From PMRA-Regarding Malathion-based Backrubbers for Use on Cattle

Hello Barry,

This serves as a follow up to my voice mail message. I'm writing to you from Health Canada's Pest Management Regulatory Agency (PMRA) which is responsible for the registration and regulation of pesticides in Canada. The PMRA is responsible for administering the Pest Control Products Act (PCPA) on behalf of the Minister of Health.

The term 'pesticides' refers to a multitude of pest control methods that include herbicides for weed control, fungicides for the control of plant diseases, insecticides and repellents to control insects, rodenticides to control rodents, electronic devices to control insects or rodents, sanitation products to control bacteria and viruses in pools and spas, special preservatives for wood, structural materials and other products, biochemicals and non-conventional products.

All pesticides must be registered with the PMRA before they can be imported, manufactured, sold or used in Canada. Registration under the PCPA requires a thorough scientific evaluation to determine that new pesticides are acceptable for a specific use and that registered pesticides remain acceptable for use once on the market. If Canadians choose to use pesticides, they can only use a pesticide registered by the federal government for the pests and treatment areas listed on the label, and use them according to the label directions.

The PMRA has established a re-evaluation program which uses current scientific approaches to examine the continued acceptability of older active ingredients and their associated end-use products. Under the PMRA's re-evaluation program, pest control products that were registered before January 1, 1995, are being reviewed to determine if their use continues to be acceptable under today's standards for health and environmental protection.

As a result of its re-evaluation, some uses of malathion were required for phase-out because they were not supported by the technical registrant. These uses were not included in the risk assessment: As a result, all malathion-based pesticides for direct application to livestock for food, including beef and dairy cattle, goats (non-milking), poultry, sheep and swine have been discontinued. I'm attaching the re-evaluation decision below:

*(See attached file: RVD2012-10-eng.pdf)*

In our Pesticide Label Database, I identified three of these pesticides that are of interest to you:

<b>Registration Number</b>	<b>Registrant Name</b>	<b>Product Name</b>	<b>Registration Status</b>
<u>18149</u>	INTERPROVINCIAL COOPERATIVE LIMITED	<u>CO-OP BACKRUBBER CONCENTRATE LIQUID INSECTICIDE</u>	REGISTERED

<u>23421</u>	AGRIUM ADVANCED TECHNOLOGIES RP INC.*	<u>FARM &amp; RANCH</u> <u>BRAND VET TEK</u> <u>BACKRUBBER</u> <u>CONCENTRATE</u> <u>OAK LAKE</u> <u>CATTLE</u>	REGISTERED
<u>27095</u>	LEWIS CATTLE OILER CO. LTD.*	<u>BACKRUBBER</u> <u>LIQUID</u> <u>CONCENTRATE</u>	REGISTERED

The last of sale for these pesticides is 2015-12-31 and the last day of use is 2018-12-31.

I trust this is helpful. Please contact me for further information.

Robert Martin  
Regulatory Information Officer / Agent d'information sur la réglementation  
Pest Management Regulatory Agency/Agence de réglementation de la lutte antiparasitaire  
2720 Riverside Drive  
Ottawa, ON, K1A 0K9  
1-800-267-6315 (Within Canada)  
613-736-3799 (Elsewhere)  
<http://www.hc-sc.gc.ca/cps-spc/pest/index-eng.php>

**Audrey Bjorklund**

---

**From:** Invasive Species (AISC) <info@abinvasives.ca>  
**Sent:** March 4, 2015 3:25 PM  
**To:** Audrey Bjorklund  
**Subject:** THE INVADER 2015 (volume 3)



## THE INVADER 2015 (volume 3)

March is here and the meeting season is in full swing!!! So you do not want to miss the 2nd Annual Conference and AGM of the Alberta Invasive Species Council.

### Prussian Carp Update

As a result of the article in THE INVADER 2015 (volume 2) published on February 3rd, it has been reported that Prussian Carp were discovered in Lake Diefenbaker in 2011. It is not to surprising since the Prussian carp discovered in Alberta were in the South Saskatchewan watershed (Bow River, Red Deer River). Lake Diefenbaker is fed by the South Saskatchewan river. It is disturbing that this invasive species is so wide-spread so quickly. Rivers are a very effective pathway for the spread of aquatic invasive species.

### Alberta Weed Control Act – 16 New Species Proposed for addition

Changes to the Prohibited Noxious and Noxious species in the Weed Control Act have been proposed. The proposal is with the Minister of Agriculture and could be approved at any time. There are 11 yellow hawkweeds proposed for addition. Whiplash hawkweed, Yellowdevil hawkweed, Kingdevil hawkweed, Smooth hawkweed, Common hawkweed, Spotted hawkweed, Wall hawkweed, Tall hawkweed, Queendevil hawkweed, European hawkweed and Showy hawkweed. AISC has fact sheets in development. Watch for them soon at [www.abinvasives](http://www.abinvasives). There are 5 other species being proposed including African Rue, Alkali Swainsonpea, Pale/European Swallow-wort (Dog Strangling Vine), Black Swallow-wort and Queen Anne's Lace (Wild carrot). Fact Sheets on these 5 species are already on the AISC website. **Check them out.** That will bring the total number of regulated invasive plants to 91. A handy feature of the AISC Fact Sheet web page is a search function that allows you to use either common name or scientific (Latin) name.

**Species  
Highlight**

Queen Anne  
Lace\*

## 2nd Annual AISC Conference & AGM

The Alberta Water Council completed a study of aquatic invasive species management programs and identified the characteristics of successful ones. Andre Asselin will provide insights into the things we can do to be successful. Can those learnings be applied to other invasive species management programs? Come, listen and answer that question yourself.

Liana Collette completed her Master of Science on Russian Olive. Russian Olive is a problem in the Western United States and is listed as noxious in 2 States. Little scientific investigation has been completed on the invasion potential or impact on Canadian ecosystems. Her study was designed to address those 2 issues. Come and find out what she discovered.

We are always looking for new and innovative tools for invasive species management. There has been lots of talk about using drones. Steve Myshak works with drones. Come and find out if this new tool has potential.

These are just a few of the speakers who will be at the Conference. Check out the final AGENDA.

## 2nd Annual AISC Conference & AGM – Early registration deadline extended to 5:00 pm on Monday, March 9th, 2015.

The AISC conference is a week away! REGISTER TODAY There are no registrations at the door!

## Alberta Invasive Species Council; How can you get involved???

Become a MEMBER

Sign up for the NEWSLETTER, follow us on Twitter and Facebook

Be informed about invasive species, check out the FACT SHEETS and RESOURCES on the website [www.abinvasives.ca](http://www.abinvasives.ca)

AISC is accepting nominations for 5 positions on the Board of Directors. The members, at the Annual General Meeting, vote on all Board positions. Fill out a NOMINATION FORM and send it to [info@abinvasives.ca](mailto:info@abinvasives.ca)

- Government of Alberta representation: There are two seats available. One seat is currently occupied by Martin Robillard (ESRD – Forest Health). He was appointed by the Board in 2014. This appointment must be confirmed by the membership at the AGM.
- Other Government (Federal, urban, rural, First Nations) representation: There is one seat available. That seat is currently occupied by Luc Rainville (National Energy Board). He was appointed by the Board in 2014. This appointment must be confirmed by the membership at the AGM.
- Industry representation: There is one seat available.
- Others (Individuals, NGOs, Academia) representation: There is one seat available.

## NEW Invasive Plant Brochure for Gardeners in Alberta

AISC exhausted supplies of the popular brochure Weed Wise Gardening in Alberta. So a new updated brochure has been developed and is at the printers now. The new brochure looks different and is different! The new title is Plant Wise, Grow Me Instead. It encourages gardeners to change behavior and

grown non-invasive native and ornamental alternatives. AISC is an active supporter of the Canadian Council on Invasive Species and their national horticulture plan. As a result, AISC adopted the slogan Grow Me Instead which is becoming widely used across Canada. AISC went a step further. If you look at the same brochure produced by the Invasive Species Council of British Columbia you will notice a very strong similarity in the title, wording and design. This was done intentionally. So many people travel or re-locate between Alberta and BC. Now the gardening brochure has a familiar title and design in both provinces. However the content of each brochure is unique to each province. We have different invasive plants to avoid and different alternatives to plant. The new brochure highlights Dame's Rocket, Purple Loosestrife, Himalayan Balsam, Common Baby's Breath, Yellow Clematis, Flowering Rush, Pale Yellow Iris, Bighead Knapweed and Salt Cedar. There is a special feature on "Wildflower" seed packets, with some strategies to avoid unintentionally planting the seeds of invasive plants. Check out the electronic version of the **GROW ME INSTEAD** brochure on the AISC website. Thanks to Nicole Kimmel from Alberta Agriculture & Rural Development, Daniel Laubhann from the City of Edmonton and Dave Hayman from the City of Calgary for their input. And special thanks to the Alberta Crop Industry Development Fund Ltd. for funding the printing of this new communications tool to stop the introduction and spread of invasive plants.

© Alberta Invasive Species Council | [Visit Website](#)  
[Click here to unsubscribe.](#)

