

**AGENDA
CLEAR HILLS COUNTY
AGRICULTURAL SERVICE BOARD MEETING
January 9, 2017**

The Agricultural Service Board meeting of Clear Hills County will be held on Monday, January 9, 2017 at 10:00 a.m. in the Council Chambers of the County Office, Worsley, Alberta.

1. **CALL TO ORDER**
2. **AGENDA**
3. **ADOPTION OF PREVIOUS MINUTES**
 - a. **December 12, 2016 Organizational Meeting 2**
 - b. **December 12, 2016 5**
4. **Delegation(s)**
5. **BUSINESS ARISING**
6. **OLD BUSINESS**
 - a. **Activity Report 10**
 - b. **Agricultural Service Board Business Plan 13**
 - c. **Date, Time and Place of Board Meetings..... 22**
 - d. **Municipal Weed Control 23**
7. **NEW BUSINESS**
 - a. **Events 28**
 - b. **Well Decommissioning Under Grow Forward 2 39**
8. **REPORTS**
 - a. **Agricultural Fieldman Report 58**
 - b. **Board Reports 64**
9. **INFORMATION & CORRESPONDENCE 73**
10. **CONFIDENTIAL**
11. **ADJOURNMENT**

**MINUTES OF CLEAR HILLS COUNTY
AGRICULTURAL SERVICE BOARD ORGANIZATIONAL MEETING
COUNTY COUNCIL CHAMBERS
December 12, 2016**

PRESENT

Brian Harcourt	Member
Charlie Johnson	Council Representative
Baldur Ruecker	Member
Mackay Ross	Member
Julie Watchorn	Member

IN ATTENDANCE

Audrey Bjorklund	Community Development Manager
Aaron Zylstra	Agricultural Fieldman
Greg Coon	Agricultural Fieldman
Sarah Hayward	Community Development Clerk

IN REGRET

Garry Candy	Member
-------------	--------

CALL TO ORDER

Community Development Manager Bjorklund called the meeting to order at 10:10 a.m.

AG123 (12/12/16)

RESOLUTION by Member Ruecker that this Agricultural Service Board adopts the agenda governing the December 12, 2016 Organizational Meeting. CARRIED.

VOTING
PROCEDURE

By resolution the Board shall determine if they wish to vote by secret ballot or show of hands, at the organizational meeting.

AG124 (12/12/16)

RESOLUTION by Member Ruecker that this Agricultural Service Board determine the voting of chairperson and deputy chairperson by show of hands. CARRIED.

ELECTION OF
CHAIR

As per Bylaw 177-13 annually at the first meeting following the Council Organizational Meeting, the Agricultural Service Board will appoint a Chairperson from among all voting members for the year.

A call will be made three times for nominations for the position of Chair. Following the third call, a request will be made for a motion for nominations to cease.

Audrey Bjorklund, CDM, called for nominations for Chair.

Councillor Johnson nominated Member Harcourt.
Member Harcourt accepted.

Audrey Bjorklund, CDM, called for nominations for Chair a second time.

AG125 (12/12/16)

Audrey Bjorklund, CDM, called for nominations for Chair a third and final time.

RESOLUTION by Member Ross that nominations for Chair cease.

Member Harcourt was declared Chair by acclamation.

Chair Harcourt took the chair.

**ELECTION OF
DEPUTY CHAIR**

Agricultural Service Board Administration Procedure 6301-01, states that the Agricultural Service Board annually, at the first meeting following the Council Organizational Meeting, appoint a Deputy Chairperson from among all voting members for the year.

A call will be made three times for nominations for the position of Deputy Chair. Following the third call, a request will be made for a motion for nominations to cease.

Chair Harcourt called for nominations for Deputy Chair.

Chair Harcourt nominated Member Ruecker.
Member Ruecker accepted.

Chair Harcourt called for nominations for Deputy Chair a second time.

Chair Harcourt called for nominations for Deputy Chair a third and final time.

AG126 (12/12/16)

RESOLUTION by Councillor Johnson that nominations for Deputy Chair cease. CARRIED.

Member Ruecker was declared Deputy Chair by acclamation.

**APPOINTMENT OF
VOTING MEMBERS**

As per Agricultural Service Board Administration Procedure 6301-01, annually, at the first meeting following the Council Organizational Meeting, the Agricultural Service Board selects voting delegates for the annual Provincial Agricultural Service Board Conference.

AG127 (12/12/16)

RESOLUTION by Member Ross that this Agricultural Service Board appoint Chair Ruecker and Deputy Chair be voting members and Councillor Johnson be the alternate voting member for the Agricultural Service Board Provincial Conference. CARRIED.

Signing Authorities

As per Agricultural Service Board Administration Procedure 6301-01(2.4) annually at the first meeting, following the Council Organizational Meeting, the Agricultural Service Board will appoint signing authority for grant applications.

AG128 (12/12/16)

RESOLUTION by Councillor Johnson That this Agricultural Service Board appoint Chair Harcourt and Deputy Chair Ruecker as the Agricultural Service Board grant signing authorities for 2016/2017. CARRIED.

DATE, TIME AND
PLACE OF BOARD
MEETINGS

The Agricultural Service Board currently meets every second Monday when the meeting will be held on the first Monday of the month and there are no meetings held in April or September. The Board now will select the day of the month and the commencement time for the monthly meetings.

AG129 (12/12/16)

RESOLUTION by Member Ross that this Agricultural Service Board will table the date, time and place of board meetings, until a meeting when all board members are present. CARRIED.

ADJOURNMENT

Chair Harcourt adjourned the Agricultural Service Board Organizational meeting at 10:20 a.m.

CHAIR

AGRICULTURAL FIELDMAN

**MINUTES OF CLEAR HILLS COUNTY
AGRICULTURAL SERVICE BOARD MEETING
COUNCIL CHAMBERS, Worsley, Alberta
December 12, 2016**

PRESENT

Brian Harcourt	Chair
Charlie Johnson	Council Representative
Mackay Ross	Member
Baldur Ruecker	Deputy Chair
Julie Watchorn	Member

IN ATTENDANCE

Sarah Hayward	Community Development Clerk
Aaron Zylstra	Agricultural Fieldman
Greg Coon	Agricultural Fieldman
Audrey Bjorklund	Community Development Manager

IN REGRET

Garry Candy	Member
-------------	--------

CALL TO ORDER

Chair Harcourt called the meeting to order at 10:20 a.m.

AGENDA

AG130(12/12/16)

RESOLUTION by Deputy Chair Ruecker that this Agricultural Service Board adopts the agenda governing the December 12, 2016 Agricultural Service Board meeting with the following additions:

- 7 E. 2017 Provincial Conference Resolutions
- 7 F. Farm Grid Tie Solar Workshop
- 7 G. AFSC

CARRIED.

AG131(12/12/16)

RESOLUTION by Member Watchorn that this Agricultural Service Board adopts the minutes of the October 17, 2016 Agricultural Service Board Meeting as presented. CARRIED.

DELEGATION

OLD BUSINESS

Activity Report

The Board is presented with the Agricultural Service Board Activity Report.

AG132(12/12/16)

RESOLUTION by Member Ross that this Agricultural Service Board accepts the December 12, 2016 Agricultural Service Board Activity Report as presented. CARRIED.

CombCut Selective Mower

The Board requested administration bring back further information on the CombCut Selective Mower as a potential rental equipment item.

AG133(12/12/16)

RESOLUTION by Member Watchorn that this Agricultural Service Board table the discussion around adding a CombCut Selective Mower to the rental equipment fleet and bring back information once the 5 year University of Saskatchewan field trial study is complete. CARRIED.

Veterinary Service
Incorporated (VSI)
Annual General
Meeting

Councillor Johnson updated the Board regarding matters discussed at the Annual General Meeting (AGM) of Veterinary Services Incorporated (1980) Ltd. that was held on Friday, November 4, 2016 in Peace River, Alberta.

AG134(12/12/16)

RESOLUTION by Member Ross that this Agricultural Service Board accept for information Deputy Reeve Johnson's update on the VSI Annual General Meeting outcomes. CARRIED.

NEW BUSINESS
Events

The Board is presented with events for their consideration.

AG135(12/12/16)

RESOLUTION by Deputy Chair Ruecker that this Agricultural Service Board authorize the attendance of all available Board members to attend the following events:

- Winter Watering Systems Tour on January 21, 2017 in Saddle Hills County, details to be announced.
 - 2017 Provincial Agricultural Service Board Conference on January 24-27, 2017 at the Westin Conference Centre in Edmonton, Alberta.
 - Back to Your Roots Soil Solutions Inc. on January 31 – February 1, 2017 at TCU Place in Saskatoon, Saskatchewan.
 - Organic Alberta Conference on February 17-18, 2017 in Lacombe, Alberta.
 - Peace Country Beef Congress on January 6-7, 2017 at the Lakota Center in Dawson Creek, BC.
 - ~~Farm Grid Tie Solar Workshop on December 13, 2016 at the Killiam Rec Centre~~
- CARRIED.**

Stock Trailer

The Board received a request to consider adding a 16' bumper pull stock trailer to the rental equipment fleet.

AG136(12/12/16)

RESOLUTION by Deputy Chair Ruecker that this Agricultural Service Board accept the discussion around adding a 16' bumper pull stock trailer to the rental equipment fleet for information. CARRIED.

AAMD&C Draft Guide
To Declaring Municipal
Agricultural Disasters

The Board is provided with the draft *A Guide to Declaring Municipal Agricultural Disasters in Alberta* from AAMD&C. The draft is being circulated to the Agricultural Service Boards for review and comments.

AG137(12/12/16)

RESOLUTION by Councillor Johnson that this Agricultural Service Board accept for information the discussion around the draft "A Guide for Declaring Municipal Agricultural

Agricultural Service Board Business Plan	<i>Disasters in Alberta.”</i> CARRIED.
AG138(12/12/16)	The Board is presented with the draft 2017-2019 Agricultural Service Board Business Plan for review. RESOLUTION by Member Ross that this Agricultural Service Board table further consideration of the 2017-2019 Agricultural Service Board Business Plan to the January Agricultural Service Board meeting. CARRIED. Chair Harcourt adjourned for lunch at 11:50 a.m. Chair Harcourt reconvened from lunch at 12:22 p.m.
2017 Provincial Conference Resolutions	The Board is presented with the Agricultural Service Board Provincial Conference Resolutions. The Conference is being held on January 24-27, 2017 at the Westin Conference Centre in Edmonton, Alberta
AG139 (12/12/16)	RESOLUTION by Councillor Johnson that this Agricultural Service Board accept for information the discussion around the 2017 Agricultural Service Board Conference being held on January 24-27, 2017 at the Westin Conference Centre in Edmonton, Alberta. CARRIED.
Farm Grid tie Solar Workshop	Member Ross requested this item be added to today’s agenda. This item was covered in the Events discussion. No further action required.
Agricultural Financial Services Corporation	Chair Harcourt requested this item be added to today’s agenda. Chair Harcourt felt this add-in was covered under AAMD&C Draft Guide to declaring Municipal Disasters. No further action required.
<u>REPORTS</u> Agricultural Fieldman Report	At this time the Agricultural Fieldman will have an opportunity to present his report.
AG140(12/12/16)	RESOLUTION by Member Ross that this Agricultural Service Board accepts the December 12, 2016 Agricultural Fieldman Report for information as presented. CARRIED.
Board Reports	At this time the Board members will have an opportunity to present their reports. <ul style="list-style-type: none">• Member Watchorn: Attended Water Resiliency Workshop on October 31, 2016 in Rycroft, Alberta, Regional Agricultural Service Board meeting on November 9, 2016 in Dixonville,

Alberta, Ration Balancing Workshop in Spirit River, Alberta on November 23, 2016, Farm Dugouts Workshop on November 24, 2016 in Grimshaw, Alberta and Cattle days in High Prairie on November 30, 2016

- Member Ross: Attended Holistic Management Workshop, Wetlands Management Rycroft on October 31, 2016, Regional Agricultural Service Board meeting on November 9, 2016 in Dixonville, Alberta, Water Resiliency Workshop on October 31, 2016 in Rycroft, Alberta, Ration Balancing Workshop in Spirit River, Alberta on November 23, 2016, Shelterbelts Workshop in Teepee Creek, Alberta, and Growing Forward in Hines Creek, Alberta on December 6, 2016
- Member Harcourt: Attended Water Resiliency Workshop on October 31, 2016 in Rycroft, Alberta, Regional Agricultural Service Board meeting on November 9, 2016 in Dixonville, Alberta, and Holistic Management Workshop
- Member Candy: Attended Water Resiliency Workshop on October 31, 2016 in Rycroft, Alberta and Alberta Beef Producers Meeting at the Dunvegan Motor Inn on November 4, 2016 in Fairview, Alberta
- Councillor Johnson attended Alberta Surface Rights meeting on November 24, 2016 in Lethbridge, Alberta.
- Deputy Chair Ruecker attended the Regional Agricultural Service Board meeting on November 9, 2016 in Dixonville, Alberta, and Water Resiliency Workshop on October 31, 2016 in Rycroft Alberta

AG141(12/12/16)

RESOLUTION by Councillor Johnson that this Agricultural Service Board accepts the Board members' written and verbal reports of December 12, 2016 for information. CARRIED.

AG142(12/12/16)

RESOLUTION by Councillor Johnson that this Agricultural Service Board request the County's extension programming partner, Peace Country Beef and Forage Association, organize a public information session regarding landowners surface and utility rights and invite Michele Del Colle, Land and Energy Specialist with the Farmers' Advocate to do the presentation. CARRIED.

**INFORMATION &
CORRESPONDENCE**

The Board is presented with correspondence to review.

1. Wheat Midge Forecast 2017 – (63-10-02)
2. Alberta Crop Report – Article – (63-10-02)
3. The Classroom Agricultural Program – Letter – (63-10-02)
4. Highlights from 2015 Market Based Solutions for Used Agricultural Plastics – Newsletter – (63-10-02)
5. Alberta Farm Animal Care – E Newsletter – (63-10-02)

6. Alberta Farm Animal Care – Article – (63-10-02)
7. The Pest Insider – Newsletter – (63-10-02)
8. Manure Management Update 2017 – Poster – (63-10-02)
9. Minutes of the Peace Region Agricultural Service Board Conference Resolutions Session – (63-10-02)
10. Association of Alberta Agricultural Fieldman – Response Letter – (63-10-02)
11. Association of Alberta Agricultural Fieldman – Response Letter – (63-10-02)
12. Forage Country – Newsletter – (63-10-02)

AG143(12/12/16)

RESOLUTION by Deputy Chair Ruecker that this Agricultural Service Board authorize the attendance of Member Ross and Deputy Chair Ruecker to attend the Manure Management Update 2017 being held on January 16, 2017 in Lethbridge, Alberta.

CARRIED.

AG144(12/12/16)

RESOLUTION by Councillor Johnson that this Agricultural Service Board receives the information and correspondence of December 12, 2016 as presented. CARRIED.

ADJOURNMENT

Chair Harcourt adjourned the meeting at 1:19 p.m.

CHAIR

AGRICULTURAL FIELDMAN

Clear Hills County

Request For Decision (RFD)

Meeting:	Agricultural Service Board
Meeting Date:	January 9, 2017
Originated By:	Aaron Zylstra, Agricultural Fieldman
Title:	ACTIVITY REPORT
File:	63-10-02

DESCRIPTION:

The board is presented with the Agricultural Service Board Activity Report.

BACKGROUND:

The Activity report is helpful to administration and the board for tracking the status of resolutions and directions from the board. Items will stay on the report until they are completed. Items that are shaded indicate that they are completed and will be removed from the list once presented at the current Agricultural Service Board meeting.

ATTACHMENTS:

- Agricultural Service Board Activity Report

RECOMMENDED ACTION:

RESOLUTION by _____ that this Agricultural Service Board (ASB) accepts the January 9, 2017 ASB Activity Report as presented.

Initials show support - Reviewed by: Manager:	AgFieldman:
--	--------------------



Senior Management Team Agricultural Service Board

Activity Report for, January 9, 2017 Page 1 of 2

Budget Items:
 CAO = Chief Administrative Officer
 DO= Development Officer
 EA = Executive Assistant

Completed Items:
 CSM = Corporate Services Manager
 AF = Ag. Fieldman
 CDM = Community Development Manager

MOTION	DATE	DESCRIPTION	DEPT	STATUS
REGULAR AGRICULTURAL SERVICE BOARD MEETINGS				
March 18, 2016				
AG48	(03/18/16)	RESOLUTION by Member Ross that this Agricultural Service Board direct administration to arrange an Alternative Land Use Services (ALUS) joint meeting with M.D. of Fairview No. 136 and M.D. of Peace No. 135 in October 2016.	AF	Planning for a January date. Determining ALUS rep availability.
June 13, 2016				
AG60	(06/13/16)	RESOLUTION by Deputy Chair Ruecker that this Agricultural Service Board requires all Agricultural Service Board members to attend the Clear Hills County Agricultural Trade Show and Farmers' Appreciation Banquet.	AF	
October 17, 2016				
AG109	(10/17/16)	RESOLUTION by Deputy Chair Ruecker that this Agricultural Service Board submit the following resolution to the Regional Agricultural Service Board Conference: WHEREAS glyphosate tolerant canola is not accepted by Japan, European Union and South Korea. WHEREAS glyphosate tolerant alfalfa is not accepted in Japan European Union, China and South Korea. THEREFORE BE IT RESOLVED THAT PEACE REGION AGRICULTURAL SERVICE BOARDS REQUEST that glyphosate tolerant wheat not be licensed for growing in Canada to protect our world market.	AF AZ	Review after 2017 Provincial Agricultural Service Board Conference. February 13 RFD
December 12, 2016				
AG129	(12/12/16)	RESOLUTION by Member Ross that this Agricultural Service Board will table the date, time and place of board meetings, until a meeting when all board members are present.	AF	January 9, 2017 RFD
AG138	(12/12/16)	RESOLUTION by Member Ross that this Agricultural Service Board table for further discussion of the 2017-2019 Agricultural Service Board Business Plan to the January meeting.	AF	January 9, 2017 RFD



Senior Management Team Agricultural Service Board

Activity Report for, January 9, 2017 Page 2 of 2

Budget Items:
 CAO = Chief Administrative Officer
 DO= Development Officer
 EA = Executive Assistant

Completed Items:
 CSM = Corporate Services Manager
 AF = Ag. Fieldman
 CDM = Community Development Manager

MOTION	DATE	DESCRIPTION	DEPT	STATUS
AG142	(12/12/16)	RESOLUTION by Councillor Johnson that this Agricultural Service Board set up a joint public workshop with the Peace Country Beef and Forage Association having speaker Michele Del Colle, Land and Energy specialist with the Farmers' Advocate Office.	AF	Future Date
Items in Waiting				
AG133	(12/12/16)	RESOLUTION by Member Watchorn that this Agricultural Service Board table the discussion around the CombCut Selective Mower and bring back information once the University of Saskatchewan field trial study is complete.		2020 OR 2021

Clear Hills County

Request For Decision (RFD)

Meeting:	Agricultural Service Board
Meeting Date:	January 9, 2017
Originated By:	Aaron Zylstra, Agricultural Fieldman
Title:	AGRICULTURAL SERVICE BOARD BUSINESS PLAN
File:	63-10-02

DESCRIPTION:

The Board tabled the draft 2017 - 2019 Agricultural Service Board Business Plan to this meeting for further consideration. The list of action items that require direction from the Board was circulated by email for the Board's review and feedback after the December meeting.

BACKGROUND:

The business plan is reviewed annually. The updated business plan is required for the ASB Grant Program through the Government of Alberta. The ASB Grant application deadline is January 31, 2017.

The board is requested to review and direct addition or deletions or amendments to the business plan.

ATTACHMENTS:

- Action Items List with follow up options
- 2017 – 2019 ASB Business Plan

OPTIONS:

1. approve 2017 – 2019 Agricultural Service Board Business plan as presented
2. approve the 2017 – 2019 Agricultural Service Board Business plan with the following amendments _____

RECOMMENDED ACTION:

That this Agricultural Service Board approve the 2017 – 2019 Agricultural Service Board Business plan with the following amendments:

Initials show support - Reviewed by: **Manager:**

ABJ

AgFieldman:

GC

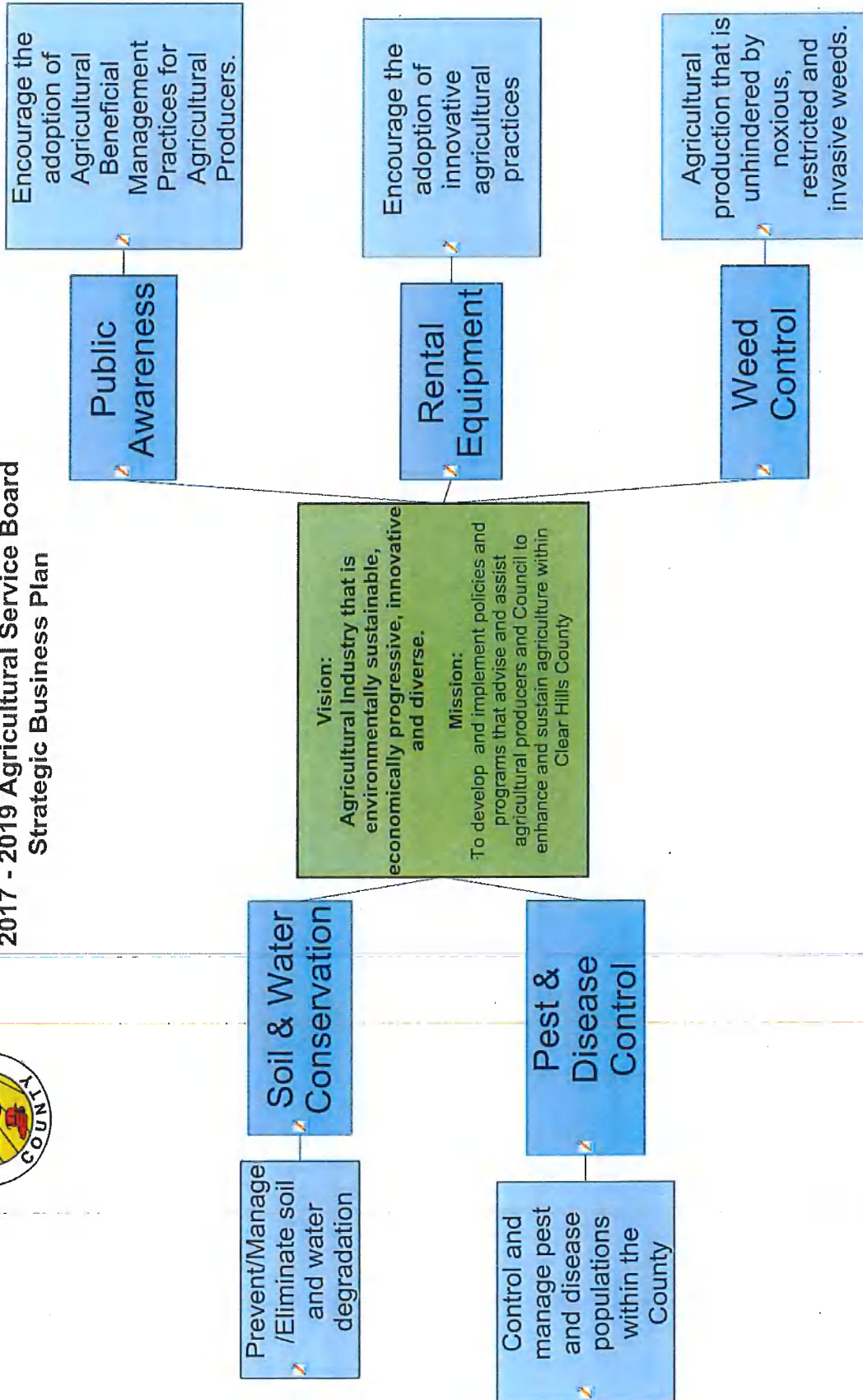
2017-2019 ASB Business Plan Action List

Public Awareness Strategy				
<u>Objective</u>	<u>Action</u>		<u>Status</u>	<u>Follow Up</u>
Provide demonstration plots, tour days, and seminars that are easily accessible to County Agricultural Producers	Partner with outside agencies to provide these services. Carcass disposal information session. Investigate potential for large carcass incinerator partnership with other municipalities or local private business that does small carcass incineration		Incomplete	Option 1- Continue investigating Option 2- Abandon action Option 3- Revise action
Provide demonstration plots, tour days, and seminars that are easily accessible to County Agricultural Producers	Reimburse registration fees for agricultural producer(s) to attend events that meet this goal to an annual budgetary maximum and require the producer(s) to provide written feedback to the ASB that may be published in the newsletter		Complete	Option 1- Continue to implement Option 2- Abandon action Option 3- Revise action
Host a successful trade show	Maintain cost recovery at 70% (2010-70% 2011-54% 2012-65% 2013-71% 2014-97% 2015-60% 2016-51%)(Avg over 7 years = 67%)		Complete	Option 1- Leave at 70% Increase percentage Option 3- Decrease percentage
Provide veterinary services in the region for livestock producers	Effective 2011 went with \$30 membership from \$20 and to 5 year term from lifetime term		Complete	Option 1- Leave as is Increase fee and/or term Option 3- Decrease fee and/or term
Increase the profile of farm safety	Annual Farm Safety diorama or poster contest Grades K-6		Limited Interest in the program	Recommend removing from business plan
Encourage youth into agricultural production as a career	Provide registration fees and travel costs for young farmers or potential young farmers interested in attending conferences, workshops, or seminars related to agriculture production and management		Not used in 2016	Option 1- Implement program Option 2- Abandon program Option 3- Revise program
Rental Equipment Strategy				
<u>Objective</u>	<u>Action</u>		<u>Status</u>	<u>Follow Up</u>
Recover capital costs and maintenance costs	50% cost recovery of the total annual operating cost of the rental program		Unknown	obtain cost recovery numbers and decide if this is realistic
Recover capital costs and maintenance costs	Recapture 50% capital costs per unit and 100% of maintenance costs over the life of the item		Unknown	obtain cost recovery numbers and decide if this is realistic
Provide satellite rental agent	Enter into agreements with interested agents to provide satellite yard rental services		Incomplete	Option 1- Continue with current policy of reducing rental rate by 1/2 day for users more than 50 kms from County office Option 2- Seek out agents to provide satellite yard rental services

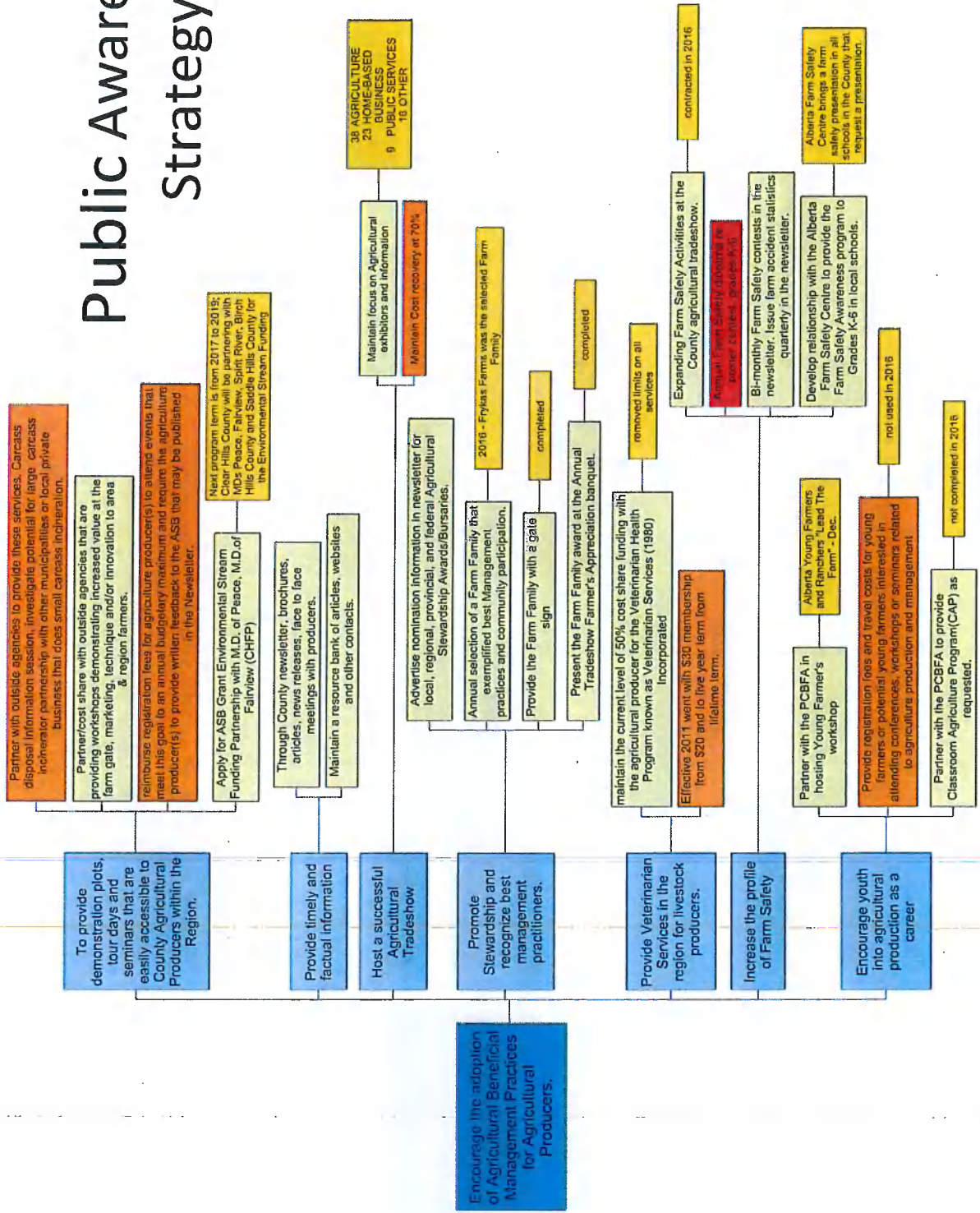
Weed Control Strategy				
Objective	Control noxious and restricted weeds on private land and municipal roadsides, property, landfills, and gravel pits			
Action	Implement roadside beautification program to encourage landowners to control weed infestations, undesirable vegetation growth and debris within roadside ditches adjacent to their property	Status	Incomplete	Follow Up Option 1- Continue working with not-for-profit groups to clean up roadsides that lead to landfills Option 2- Revise or expand the program
Pest & Disease Control Strategy				
Objective	Assist livestock industry to implement legislated requirements	Action	Offer 2 tag readers through the rental equipment program. Small damage deposit, No rental fee	Status
	Assist livestock industry to implement legislated requirements		Offer workshop on new regulation regarding animal health and wellness during hauling	1 reader at county office One given to PCBFA Provided by 3rd party organizations
	Assist livestock industry to implement legislated requirements		Utilize provincial funding to provide 3rd party traceability outreach for local producers	Complete?
Soil & Water Conservation Strategy				
Objective	Work within Alberta's Water For Life to create sustainable use of water resources. Help producers with drought management, riparian areas, flooding and water resources	Action	Support PCBFA developing a riparian action team for the Clear Hills watershed	Status
	Encourage the adoption of beneficial management practices for soil conservation		Facilitate a tree distribution program, including articles on importance of shelterbelts, tree maintenance	Partially complete
	Encourage the adoption of beneficial management practices for soil conservation		Provide access to mulch & mulch applicator for establishing windbreaks, on a cost recovery basis	Complete
	Encourage the adoption of beneficial management practices for soil conservation		Provide administrative services to distribute tree seedlings to ratepayers at discounted rates without additional administration fees or shipping costs	Complete
				Option 1- Continue program Option 2- Abandon program
				Option 1- Continue support of PCBFA Option 2- Review program with PCBFA
				Option 1- Continue program provide as needed from plan Option 2- Remove from plan
				Option 1- Continue program Option 2- Abandon program
				Option 1- Continue program Option 2- Abandon program
				Option 1- Continue program Option 2- Abandon program



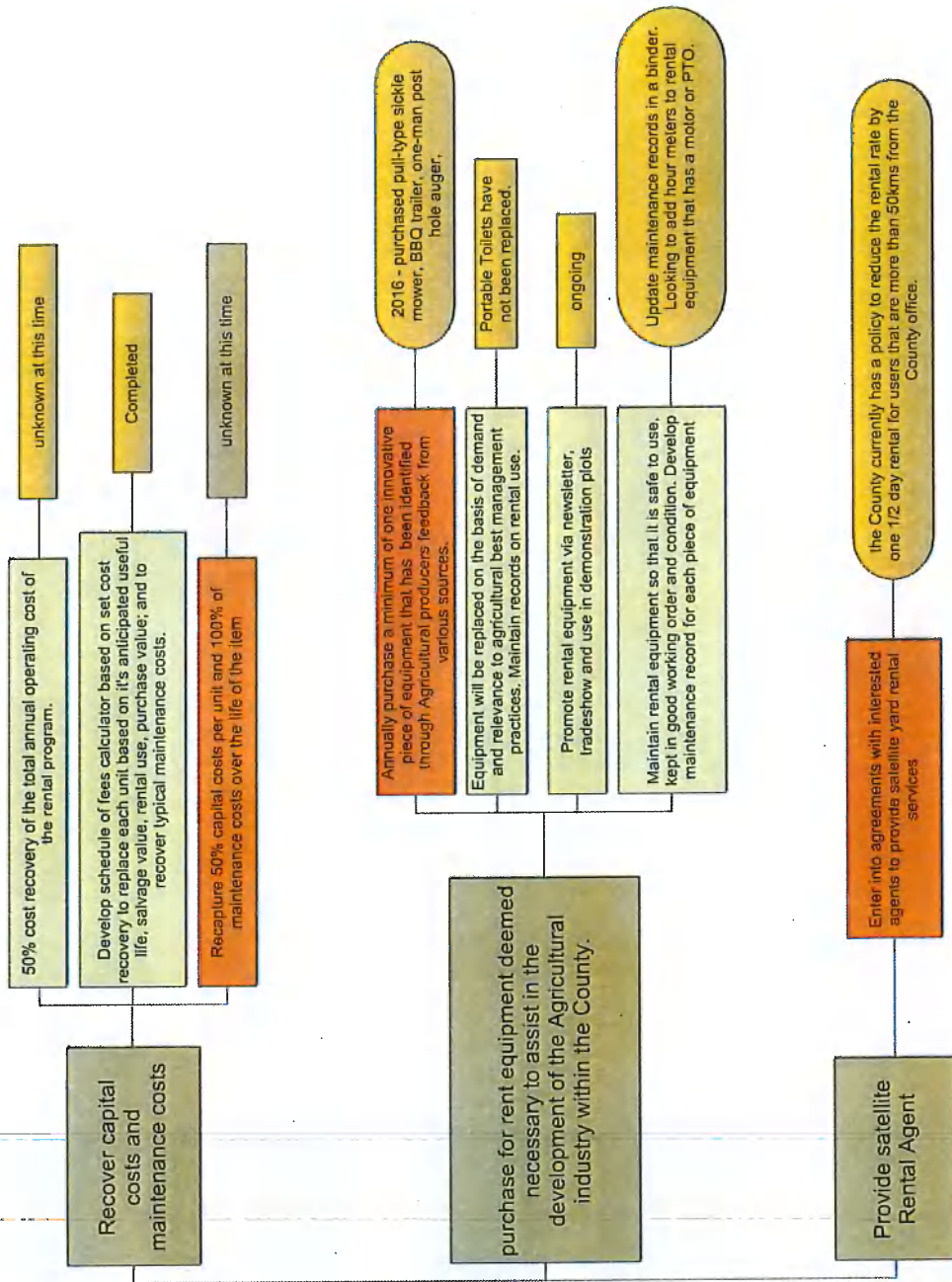
Clear Hills County
2017 - 2019 Agricultural Service Board
Strategic Business Plan



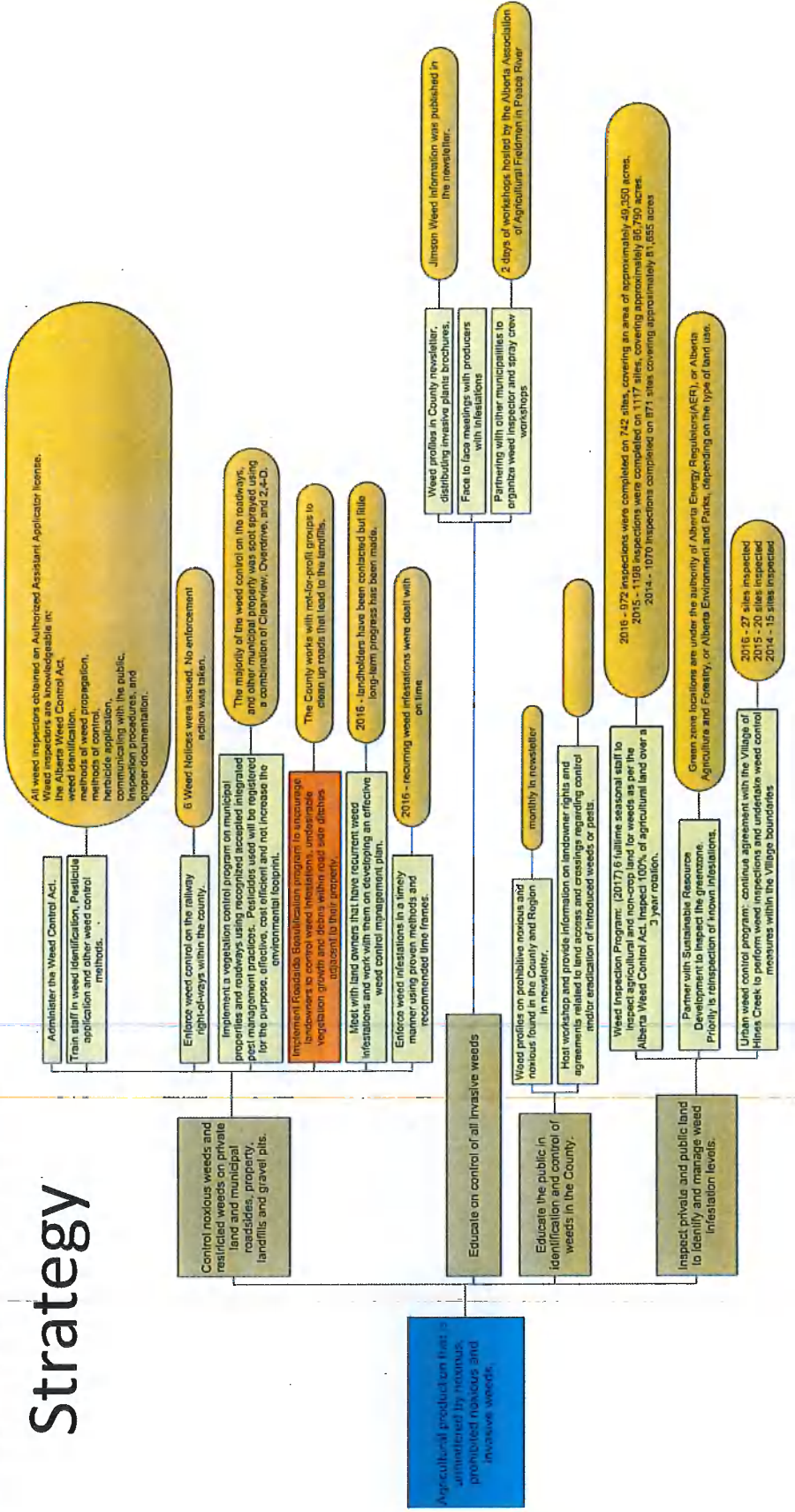
Public Awareness Strategy



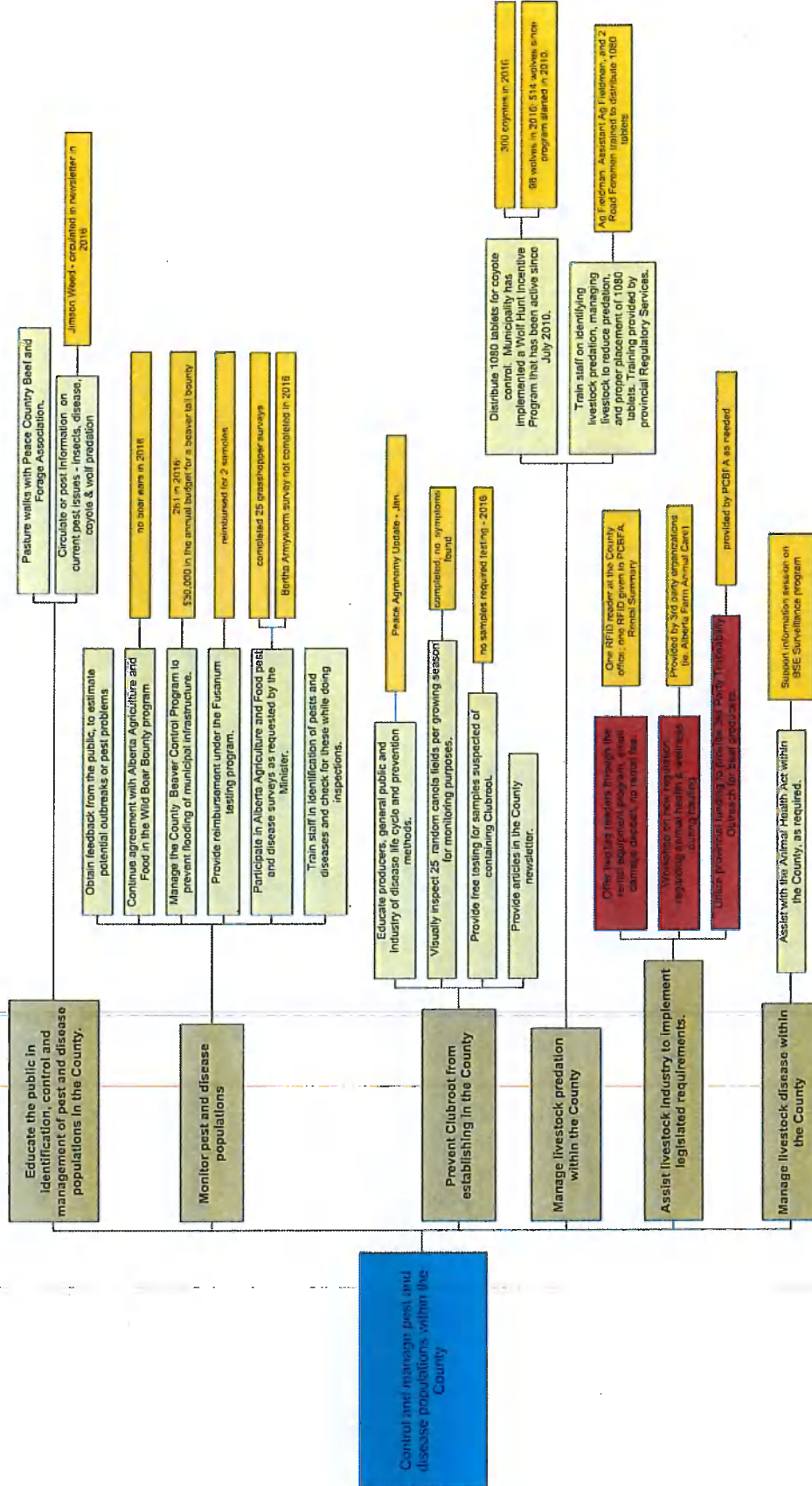
Rental Equipment Strategy



Weed Control Strategy

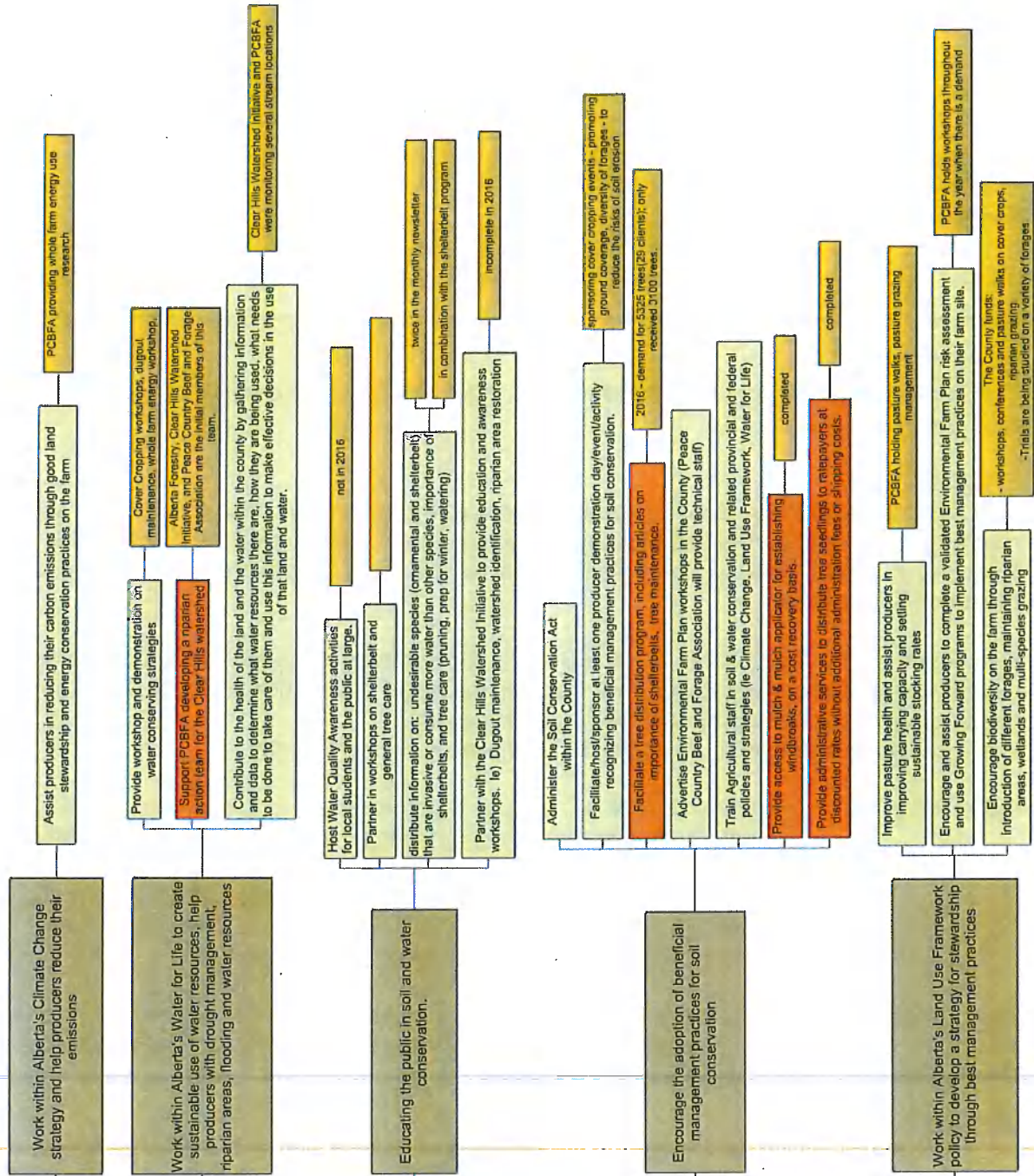


Pest & Disease Control Strategy



Soil & Water Conservation Strategy

Prevent and Manage Soil and Water Degradation



Clear Hills County

Request For Decision (RFD)

Meeting:	Agricultural Service Board
Meeting Date:	December 12, 2016
Originated By:	Audrey Bjorklund Community Development Manager
Title:	DATE, TIME AND PLACE OF BOARD MEETINGS
File:	63-10-02

DESCRIPTION:

The Board tabled this item from the December 12, 2016 Organizational Meeting since not all members were present.

BACKGROUND:

The Agricultural Service Board currently meets every second Monday except May when the meeting will be held on the first Monday of the month and there are no meetings held in April or September. The Board will now select the day of the month and the commencement time for the monthly meetings.

Procedure 6301-01(3.2) states that the Board will meet every second Wednesday of the month except for April and August and that Regular meetings commence at 10:00 a.m., unless an earlier start time is selected to deal with special issues.

In the past meetings were held on the 3rd Wednesday of every month.

AG22 (03/09/15) RESOLUTION by Deputy Chair Ruecker that this Agricultural Service Board authorize that regular meetings will be held the second Monday of each month except May when the meeting will be held on the first Monday of the month; meetings will commence at 10:00 a.m.; and no meetings will be held in April or September. At the call of the Chair, special meetings shall be posted 48 hours in advance. CARRIED.

The board may change the day and time of meetings by resolution if the second Monday and 10:00 a.m. start time are not acceptable to the members. All members must be present to change the date, time and place of the meetings.

OPTIONS:

1. Set ASB meetings for the third Wednesday of each month except May when the meeting will be held the first Wednesday, and no meetings will be held in April and September at a selected time.
2. Set ASB meetings for the second Monday of each month except May when the meeting will be held on the first Monday, and no meeting will be held in April and September at a selected time.
3. Table the date, time and place of Board meetings until all members are present.

RECOMMENDED ACTION:

That this Agricultural Service Board authorize that ten (10) regular meetings are to be held the **third** Wednesday of each month except May when the meeting will be held the first Wednesday; meetings will start at **10:00 a.m.**; and no meetings will be held in April or August. At the call of the Chair, special meetings shall be posted 48 hours in advance.

Initials show support - Reviewed by:

Manager:

ABj

AgFieldman:

GC

Clear Hills County Request For Decision (RFD)

Meeting:	Agricultural Service Board
Meeting Date:	January 9, 2017
Originated By:	Greg Coon, Agricultural Fieldman
Title:	Municipal Weed Control
File:	63-10-02

DESCRIPTION:

Minister Carlier has responded to the letter of concern Council sent regarding the spread of noxious and prohibited noxious weeds due to movement of traffic, equipment, and people. In the letter of reply, the Minister is offering to meet with the county and representatives from urban authorities within Clear Hills County (Village of Hines Creek) to discuss obligations under the act. The Board is provided with the draft response letter that will be presented to Council tomorrow, January 10, 2017, and is requested to provide direction on additions or deletions if any.

BACKGROUND:

AG95(08/08/16) RESOLUTION by Deputy Chair Ruecker that this Agricultural Service Board draft a letter to the Alberta Minister of Agriculture and Forestry in regards to Noxious and Prohibited Noxious weeds becoming increasingly prevalent with the increase of traffic, equipment and movement of people.
CARRIED.

C463-16(08/17/16) RESOLUTION by Councillor Svederus to include the concern over the spread of weeds between the provinces and from municipality to municipality on the next Interprovincial/Intermunicipal Committee meeting.
CARRIED

AG110(10/17/16) RESOLUTION by Member Ross that this Agricultural Service Board recommend Council send the drafted letter to the Alberta Minister of Agriculture and Forestry in regards to Noxious and Prohibited Noxious weeds becoming increasingly prevalent with the increase of traffic, equipment and movement of people. CARRIED

C624-16(10/25/16) RESOLUTION by Deputy Reeve-Johnson to send the letter to the Alberta Minister of Agriculture and Forestry in regards to Noxious and Prohibited Noxious weeds becoming increasingly prevalent with the increase in traffic, equipment and movement of people. CARRIED.

C696-16(12/13/16) RESOLUTION by Deputy-Reeve Johnson to draft a letter of response to Minister Carlier regarding the spread of noxious and prohibited noxious weeds, pointing out concerns are not with immediate area, rather traffic, equipment and people, coming from outside the region and province.
CARRIED.

ATTACHMENTS.

Initials show support - Reviewed by: Manager: <i>ABj</i> AgFieldman: <i>GC</i>
--

- Draft Response Letter
- Response Letter from Minister Carlier

OPTIONS:

1. Recommend Council send the letter.
2. Recommend Council send the letter with the following additions/deletions/changes.....

RECOMMENDED MOTION:

RESOLUTION by that this Agricultural Service Board recommends that Council sends the letter of response to Minister Carlier regarding the spread of noxious and prohibited noxious weeds, pointing out concerns are not with immediate area, rather traffic, equipment and people, coming from outside the region and province as presented/amended.

Initials show support - Reviewed by: **Manager:** *Abj.* **AgFieldman:**



CLEAR HILLS COUNTY

Honorable Oneil Carlier
Office of the Minister
Agriculture and Forestry
229 Legislature Building
10800-97 Avenue
Edmonton, AB T5K 2B6

File No. 63-10-02

December 14, 2016

Subject: Municipal Weed Control

Dear Honorable Oneil Carlier,

Thank you for your response to the October 25, 2016 letter requesting the appointment of provincial weed inspectors. Based on your response, Clear Hills County recognized that some clarification was required regarding the initial letter from the County.

In your response letter, you suggested a joint meeting between your staff and representatives from both the urban and rural authorities in Clear Hills County. There is only one urban authority within the boundaries of Clear Hills County, which is the Village of Hines Creek. The County currently has an agreement with the Village to provide weed inspection services for the Village. This agreement has proven very effective for both the County and the Village.

The concerns Clear Hills County has in regards to the spread of noxious and prohibited noxious weeds are not with the urban authorities within our boundaries, but rather with urban municipalities outside of our boundaries. Auction yards, equipment dealership yards, construction companies, etc. pose a significant risk to rural municipalities as far as the spread of noxious and prohibited noxious weeds. In most cases, these urban municipalities are unaware or uninformed of the impact they have on the spread of weeds. These urban municipalities receive no provincial funding for weed control within their boundaries.

With this in mind, Clear Hills County is requesting that the Province of Alberta appoint provincial weed inspectors to enforce the *Alberta Weed Control Act*, in urban municipalities within the province, or perhaps provide funding and/or resources to these municipalities so that they may deal with their respective weed issues successfully. Clear Hills County recognizes that prevention of the introduction of noxious and prohibited noxious weeds into our County is the first and most effective step in an Integrated Weed Management Plan. Controlling weeds in the urban areas is a step that is often overlooked.

Thank you in advance for your diligent consideration in this matter.

Yours truly,

Reeve, Clear Hills County

GC/

cc: The Honorable Rachel Notley Premier of Alberta
The Honourable Joe Ceci, Minister of Finance and President of the Treasury Board
The Honorable Margaret McCuaig-Boyd, MLA-Dunvegan-Central Peace - Notley
Peace River Region Agriculture Service Boards
Trent Keller, President, Association of Alberta Agricultural Fieldmen



ALBERTA
AGRICULTURE AND FORESTRY

Office of the Minister
MLA, Whitecourt-St. Anne

AR-58059

RECEIVED

NOV 23 2016

CLEAR HILLS COUNTY

NOV 17 2016

Mr. Charlie Johnson
Reeve
Clear Hills County
Box 240
Worsley, AB T0H 3W0

Dear Mr. Johnson:

Thank you for your October 25, 2016, letter requesting the appointment of provincial inspectors to enforce compliance with the *Weed Control Act* (the Act) in urban municipalities of Clear Hills County. I also appreciate you taking the time to express your concerns about the increased prevalence of noxious and prohibited noxious weeds in your county.

Agriculture and Forestry (AF) recognizes weeds are an important issue to Alberta's economy and environment. The Act and the *Weed Control Regulation* are legislative mechanisms that are in place to reduce the introduction and spread of weeds in the province. We are committed to the control of weeds listed on the Regulation, and AF supports local authorities in their weed management efforts.

With respect to your concerns, under the Act, local authorities are required to appoint sufficient weed inspectors to monitor for weeds, take samples, and conduct enforcement. Provincial inspectors may be appointed if it is determined local authority inspectors are not properly enforcing and monitoring compliance with the Act.

To encourage cooperation and collaboration, I suggest a joint meeting between my staff and representatives from both urban and rural authorities in Clear Hills County. This joint meeting could be used to discuss obligations under the Act and Regulation. After the meeting, I will consider the information provided by the urban and rural authorities before making any decisions on how best to move forward.

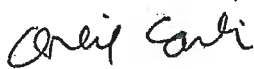
.../2

Mr. Charlie Johnson
Page Two

AF staff will be willing to attend and organize this meeting, if desired. Please feel free to contact Bret Kennedy, Director of the Policy and Regulatory Affairs Section, at 780-427-3699 or bret.kennedy@gov.ab.ca if you are willing to engage in this meeting to discuss the issues you brought forward in your letter.

Thank you for your efforts in helping prevent the spread of weed species in Clear Hills County.

Sincerely,



Onell Carlier
Minister

cc: Honorable Rachel Notley Premier of Alberta
Honourable Joe Ceci, Minister of Finance and President of the Treasury Board
Honorable Margaret McCuaig-Boyd, MLA, Dunvegan-Central Peace-Notley

Clear Hills County Request For Decision (RFD)

Meeting:	Agricultural Service Board
Meeting Date:	January 9, 2017
Originated By:	Greg Coon, Agricultural Fieldman
Title:	EVENTS
File:	63-10-02

DESCRIPTION:

The Board is presented with events for their consideration.

BACKGROUND:

Starting this agenda administration has included Budget/Cost table for the Boards information and a calendar of current events and commitments.

- Alberta Beef Conference on February 15-17, 2017 at the Sheraton in Red Deer, Alberta.
- Farm Tech on January 31-2, 2017 at the Edmonton Expo Centre. This event is 90% sold out.
- 2017 Peace Agronomy Update- January 18, 2017 at the DMI in Fairview, Alberta
- Alberta Farm Animal Care January Advisory Council Meeting – January 23, 2017 at 10:00 a.m. at the Red Deer County Centre.

BUDGET/COSTS:

2017 Budget

- Agricultural Service Board Honorariums: \$135,000.00
- Travel and Subsistence: \$11,000.00
- Membership/Fees: \$3,500.00

Event	Location	Dates	# of days	Reg. Fee/Person	Kms from and return to Worsley	Km Charge	Accommodations /Day	Meals/Day	Personal Allowance /Day	Per Diem/Person /Day	Total Cost/Person	Recommended Attendees	**Total Cost/Event
Peace Agronomy Update	DMI Fairview, AB	1/18/17	1	\$30.00	122	\$65.88			\$40.00	\$165.60	\$301.48	6	\$1,808.88
ASB Conference	WestIn Hotel Edmonton	1/19/17	4	\$500.00	1242	\$670.68	\$180.00	\$25.00	\$40.00	\$165.60	\$2,813.08	4	\$11,252.32

OPTIONS:

1. Approve the attendance of one or more members to one or more of the events listed.
2. Accept for information.

ATTACHMENTS:


- Calendars
- Alberta Beef Conference Information
- 2017 Peace Agronomy Update poster
- January Advisory Council Meeting Information

RECOMMENDED ACTION:

That this Agricultural Service Board ...

Initials show support - Reviewed by: Manager: <i>ABJ</i>	AgFieldman: <i>GC</i>
---	------------------------------

January 2017

Sun.	Mon.	Tue.	Wed.	Thu.	Fri.	Sat.
1 New Years	2 County Closed	3	4	5	6 Peace Country Beef Congress All 	7
8	9 ASB meeting	10 Council Meeting	11	12	13	14
15	16	17	18 Peace Agronomy Update	19	20	21 Winter Watering Systems All
22	23	24 ASB Provincial Conference BH, BR, JW, CJ,	25	26	27	28
29	30	31 Back to Your Roots  Farm.Tech 	Feb. 17	Feb. 2	3	4

January 6th-7th – Lakota in Dawson Creek, BC

January 16th – Lethbridge, Alberta

January 18th – Peace Agronomy Update @ 9:00 a.m. at the Dunvegan Motor Inn in Fairview, Alberta

January 21st – Winter Watering System @ 9:30 a.m. at the Hines Creek Composite School


January 24th – ASB Provincial Conference at the Westin Conference Centre in Edmonton, Alberta

January 31st – February 1st – Back to Your Roots @ TCU Place in Saskatoon, SK

January 31st – February 2nd – Farm Tech at the Edmonton Expo Centre

Legend:
BH – Brian Harcourt
BR – Baldur Ruecker
MR – MacKay Ross
GC – Garry Candy
JW – Julie Watchorn
CJ – Charlie Johnson
All – All available members

February 2017

Sun.	Mon.	Tue.	Wed.	Thu.	Fri.	Sat.
			1	2	3	4
5	6	7	8	9	10	11
12	13	14 Council Meeting	15 ASB Meeting?	16	17 Organic Alberta Conference 	18
19	20	21	22	23	24	25
26	27	28				

February 17th-18th – Organic Alberta Conference in Lacombe, Alberta

Legend:

- BH – Brian Harcourt
- BR – Baldur Ruecker
- MR – MacKay Ross
- GC – Garry Candy
- JW – Julie Watchorn
- CJ – Charlie Johnson
- All – All available members



STEAKING OUT

THE CONSUMER

Options & Opportunities

Alberta Beef
Industry Conference

February 15-17, 2017 at the
Sheraton Red Deer Hotel

*Come and celebrate Alberta's
other natural resource - BEEF*

*Welcome to the
14th Annual Alberta Beef
Industry Conference
Steaking out the Consumer
Options & Opportunities*

The 2017 Alberta Beef Industry Conference will present valuable information and perspectives about key strategies for beef producers as it relates to the consumer. We will be presenting an in-depth look into consumer trends, the need for a strong connection to the consumer through the supply chain, and answering the inevitable question: will recent marketing trends prevail?

Detailed speaker descriptions can be found on the following pages. Should you have any questions please feel free to contact our office at 403-250-2509 or email jbrunette@cattlefeeders.ca.

We look forward to seeing you in February!

Register online at:

www.abiconference.ca



@ABBeefConf



Alberta Beef Industry
Conference

PRE CONFERENCE WORKSHOPS
February 15, 2017

Animal Welfare in Canadian Feedlots
10:00am – 3:30pm

Dr. Joyce Van Donkersgoed will review the development of the Canadian Animal Care Assessment Program as well as go through the feedlot welfare audit program with participants. They will answer questions and help feedlot producers and staff understand the requirements of this PAACO certified audit tool and how to implement it in their own yard. Dr. Karen Schwartkopf-Genswein will follow and summarize her related research findings on the effects of long distance transport on cattle welfare, as well as the characterization and risk factors associated with lameness in feedlot cattle.

Holistic Management Introduction
10:00am – 12:00pm

An introduction to the decision making process of holistic management which results in decisions that balance the social, financial and environmental considerations of farming. Blain will focus on the soil building aspects of planned grazing and share the results of the carbon monitoring he has been doing.

Uncovering Your Personal Brand 
1:00pm – 2:00pm

Wondering where your farm business fits in a marketplace dominated by slick brands and striking images? Join us for the Uncovering Your Personal Brand seminar, presented by BMO Bank of Montreal. You'll learn how producers benefit from developing and setting their brand apart through exploration of your business' key values and audiences. We'll follow it up with a discussion of effective communication and promotion tactics so you're set to compete in the evolving business world of agriculture!

Alberta's Premiere Beef Industry Event
Workshops | Tradeshow | Education Sessions
Networking | Social Functions

CONFERENCE SESSIONS

February 16, 2017

Changing Minds: How to Turn Negative Perceptions Into Positive Ones

Terry O'Reilly | Host of CBC's *Under the Influence*
8:45am

One of the most difficult tasks marketing can undertake is to change a perception. But it can be done. If the beef industry is facing perception obstacles, it must get ahead of the problem. Terry will talk about the process behind changing public behaviour and turning a negative perception into a positive one and will demonstrate the ways other advertisers have tackled this difficult problem with extraordinary results.

Lessons Learned Through Advocacy

Ryan Goodman | *Agriculture Proud*
9:45am

In a time of constant communication, consumers want more information about their food. Can agriculture have a voice in these conversations? Ryan Goodman shares his experiences and a few lessons learned through advocacy.

Survey says ... BEEF!

What consumers are thinking now

Doug Lacombe | *President & Founder, Communicatto*
10:45am

We all hear a lot of noise about beef, from health scares to environmental concerns, hormones to antibiotics. There's a loud minority that has a lot of opinions. But what about the silent majority? And what does the data say? Is this minority really having an impact? Are their views becoming mainstream? Doug will present the latest findings from the research data and put these trends in context.

The Real Beef ~ Panel Discussion

David Carriere | *President, Centennial Foodservice*
Mike Beretta | *CEO & President, Beretta Farms & One Earth Farms*
Retailer | *Invited*
11:45pm

Panelists will talk about the realities they are facing in the market place, consumer buying patterns, preferences, challenges and opportunities.

(continued on insert)

SCHEDULE

February 15th, 2017

10:00am – 3:30pm Animal Welfare in Canadian Feedlots

10:00am – 12:00pm Holistic Management

1:00pm – 2:00pm Uncovering Your Personal Brand

6:00pm El Hodge de Hodge
Opening Dinner

February 16th, 2017

8:30am Welcome

8:45am Changing Minds: How to Turn Negative Perceptions Into Positive Ones

9:45am Lessons Learned Through Advocacy

10:45am Survey says ... BEEF! How consumers are thinking now?

11:15am Behind the Brand - Insights Beef

11:45pm The Real Beef ~ Panel Discussion

2:00pm Global Beef Market Outlook

2:45pm Tell Me a Story: The Power of Storytelling in Marketing

4:00pm Reception **ATB**

5:30pm Dave Beppard

6:15pm Taste of Alberta Dinner & Live Auction

9:30pm Billy Bob's after party featuring - Wooden Bebel

February 17th, 2017

8:30am 2017/18 Weather Forecast

10:00am Global Economic Outlook

10:45am North American Cattle Market Outlook

11:30am Emissions Pricing in North America and Impacts on Agriculture

(Subject to change)

Hotel Information

Sheraton Hotel & Conference Centre

3310 – 50 Ave Red Deer Alberta

Toll Free Reservations: 1-800-662-7197

Sandman Hotel

2818 Gaetz Ave Red Deer Red Deer Alberta

Toll Free Reservations: 1-800-726-3626

Black Knight Inn

2929 – 50 Ave Red Deer Alberta

Toll Free Reservations: 1-800-661-8793

Red Deer Lodge

4311 – 49 Ave Red Deer Alberta

Toll Free Reservations: 1-800-661-1657



Disclaimers

All supplies and equipment of any kind brought onto the premises by the exhibitor before, during or after the show shall be at the exhibitor's own risk. Tradeshow management, facility management and their employees and agents shall be protected and indemnified from all claims made by or on account of loss or damage to property, injury or death resulting from the show or occupancy of the space allotted as per this agreement.

RECEIVED

NOV 05 2009

DEAN HILGREN

Global Beef Market Outlook

Richard Brown | Director, GIRA

2:00pm

Review of the global beef demand outlook in the context of Asian demand growth, the expanding competition from South American and Indian supply, and the dynamics which are driving this.

Tell Me a Story:

The Power of Storytelling in Marketing

Terry O'Reilly

Host of CBC's *Under the Influence*

2:45pm

If you don't have a story, you don't have a business. All the top industries in the world are underpinned by compelling brand stories. Stories move people, stories attract business and stories can be used to turn negative perceptions into positive ones. Join Terry O'Reilly as he talks about the best brand stories in the world, how they are created, how the beef industry can harvest its own stories and how to use the power of honest storytelling to guide your brand into a positive place in your customers' minds.

February 17, 2017

Weather Forecast



Dr. Art Douglas | Creighton University

8:30am

The Alberta Beef Industry Conference is pleased to welcome back Art Douglas to discuss our upcoming weather forecast. This year's session will look at the impact of upcoming weather patterns and the effect they have on the agricultural community.

Global Economic Forecast

Dina Ignjatovic | Economist,
Agriculture Services TD Bank



10:00am

Macro review of the North American economy including an interest rate forecast, CAD / USD currency forecast and a briefing on world commodities.

North American Cattle Market Outlook

Brian Perillat | Canfax

Duane Lenz | CattleFax

10:45am

This session will focus on the beef industry's supply, demand, and future price trends in Canada and the U.S. as well as macro trends affecting the industry and how they will impact beef supply and cattle prices in the year ahead.

Emissions Pricing in North America and Impacts on Agriculture

Jennifer Winter

Director, Energy & Environmental Policy, U of C
11:30am

This presentation will outline the components of Alberta's Climate Leadership Plan and compare it to other emissions and climate change policies in North America. It will describe the effect of Alberta's carbon tax on costs in Alberta's various industries, with a focus on the agricultural sector.

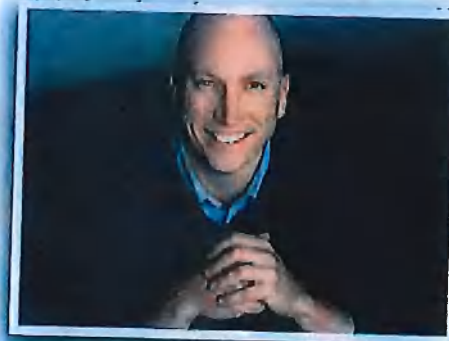


Join us for the Taste of Alberta

Dave Hemstad

5:30pm

Called a "Canadian Master" by Just For Laughs, Dave Hemstad has skyrocketed to the top of the national comedy scene, appearing regularly across the country and on a hit show on CBC. Brashly confident on stage and downright hilarious, Hemstad muses on daily life, modern world frustrations and social tensions we all experience, but keep to ourselves.





2017 PEACE AGRONOMY UPDATE



Wednesday, January 18, 2017

Dunvegan Motor Inn, Fairview

9:00 am Registration & Coffee

COST: \$30/person includes lunch

DEVELOPMENT OF OAT VARIETIES

Jennifer Mitchell-Fetch, Ag Canada, Brandon, Manitoba

OAT MARKETING OPPORTUNITIES

Bill Chapman, Crop Business Development Specialist, Alberta Ag, Barrhead

RHIZOBIA & THE AGRONOMY OF NODULATION

Jon Treloar, Technical Agronomist, Monsanto Bio-Ag

MODERNIZATION OF CANADIAN WHEAT CLASSES

Trent Whiting, Marketing Representative, SeCan

GRAIN, PULSE & OILSEED MARKET UPDATE

Neil Blue, Provincial Market Analyst, Alberta Ag, Vermilion

For more info contact North Peace Applied Research Association @ 780-836-3354 or email nara@npara.ca



Sarah Hayward

From: Aaron Zylstra
Sent: December-16-16 12:28 PM
To: Sarah Hayward
Subject: FW: Save the Date! January Advisory Council Meeting

Please include as correspondence for the January ASB meeting

Aaron Zylstra
Clear Hills County Ag. Fieldman

From: Angela Greter [mailto:angela@afac.ab.ca]
Sent: December-13-16 2:08 PM
To: Aaron Zylstra
Subject: Save the Date! January Advisory Council Meeting



Alberta Farm Animal Care Advisory Council

December 13, 2016

Dear AFAC Members,

Mark your calendars for the next AFAC Advisory Council meeting!

The meeting will be held in Red Deer at the Red Deer County Centre (38106 Range Rd 275) on **January 23, 2017** from 10:00 am to 3:30 pm. We heard your feedback from November's meeting and have chosen a different (and hopefully more comfortable) location for January's meeting!

The topic of the January meeting will be **livestock housing**. The agenda is in the process of being finalized and we will keep you posted in the coming month.


If you are able to attend, please RSVP [here](#).

I hope that you will lend your voice to the discussion and take the opportunity to connect and network with your colleagues across the agriculture sector!

Best wishes,

Angela Greter
Executive Director

Alberta Farm Animal Care | afac@afac.ab.ca | PO Box 5201, #5-112 Centre Street
High River, AB T1V 1M4

 Like us on Facebook

Follow us on [twitter](#)

Copyright © 2016. All Rights Reserved.

Alberta Farm Animal Care, PO Box 5201, #5-112 Centre Street, High
River, Alberta T1V 1M4 Canada

[SafeUnsubscribe™ aaron@clearhillscounty.ab.ca](#)

[Forward this email](#) | [Update Profile](#) | [About our service provider](#)

Sent by angela@afac.ab.ca in collaboration with

Constant Contact 

Try it free today

Clear Hills County Request For Decision (RFD)

Meeting:	Agricultural Service Board
Meeting Date:	January 9, 2017
Originated By:	Mackay Ross, Member At Large
Title:	Well Decommissioning Under Growing Forward 2
File:	63-10-10

DESCRIPTION:

Board member Ross requested administration bring information to the Board regarding well decommissioning funding through the Growing Forward 2 program.

BACKGROUND:

Member Ross had read that producers could be eligible for 50% cost recovery on Well decommissions through the Growing Forward 2 program.

ATTACHMENTS:

- Email from Member Ross
- Growing Forward 2 fact sheet
- Long Term Water Management Plan (LTWMP) application

RECOMMENDED ACTION:

RESOLUTION by _____ that this Agricultural Service Board accept the information and discussion regarding well decommissioning funding through the Growing Forward 2 program as presented.

Initials show support - Reviewed by: Manager:

ABJ

AgFieldman:

SC

Audrey Bjorklund

From: MacKay Ross <muckslotus@yahoo.com>
Sent: December-20-16 11:04 AM
To: Audrey Bjorklund
Subject: Well decommissions

Hi Audrey,

I read that producers are eligible for 50% cost recovery on well decommissions through Growing Forward 2. Please add this to the January agenda, hopefully we can help a producer or 2 decommission some wells in the Grimshaw Gravels Aquifer.

Thanks;

MacKay

To be eligible for funding, projects must be identified in a Long Term Water Management Plan (LTWMP) approved by an AF Water Specialist prior to starting. Projects must meet the requirements of all applicable federal and provincial legislation and contact made to pertinent agencies prior to starting project as indicated. The On-Farm Water Management Program (Program) Terms and Conditions govern the administration of the Program and should be reviewed prior to starting work on a project and/or applying to the Program.

Special Incentive Projects	Eligible Costs Cost sharing to 50% of eligible item cost to a maximum contribution level as stated below	Non-Eligible Costs
<p>Water Well Decommissioning And Pit Conversions</p> <p>Note: To minimize potential adverse environmental effects, wells should be decommissioned according to the requirements in the Water (Ministerial) Regulation of the Water Act (ALBERTA REGULATION 205/98)</p>	<ul style="list-style-type: none"> Well decommissioning of a drilled well by an approved water well drilling contractor Well decommissioning of a bored or large diameter well (greater than 18" in diameter) by approved method (see Module 9 of Water Wells that Last for Generations) Well pit conversion (refer to the Working Well program factsheet, Upgrading Your Well to a Pit) Maximum \$2000 contribution per project and maximum \$6000 contribution under the Program. 	<ul style="list-style-type: none"> Well decommissioning of small diameter wells by non-approved water well drilling contractor Well decommissioning by any method that contravenes the Regulation
<p>Water Use Meter</p>	<ul style="list-style-type: none"> Purchase and installation of water use meters, for agricultural use of water Maximum \$1000 contribution under the Program 	<ul style="list-style-type: none"> Purchase and installation of water use meters, for domestic use of water
<p>Well Level Monitor</p>	<ul style="list-style-type: none"> Purchase and installation of well water level monitors, loggers or other level measuring equipment for existing or new well Maximum \$1000 contribution under the Program 	<ul style="list-style-type: none"> Well level monitors, well logging or level measuring equipment that cannot be disinfected or have a design that introduces significant contamination risk
<p>Tie-In to a Multi-User Water Supply Pipeline</p> <p>Note: Applicants must provide documentation of their right to access water from this pipeline and have authorizations to construct the Tie-In on lands not owned by them (i.e. right of ways)</p>	<ul style="list-style-type: none"> Construction related cost of tie-in to an existing multi user water supply pipeline (example water co-ops, etc.) Cisterns or tanks included as part of the tie-in installation applied for are eligible Maximum \$5000 contribution under the Program 	<ul style="list-style-type: none"> Membership/share costs for multi-user water supply pipelines (example water co-ops, etc.) including those paid toward association costs such as loan lien notes or interest, engineering costs, environmental assessments, establishment of reserves, on-going maintenance or service provision;
<p>Note: <i>Call Before You Dig</i> Alberta 1 call: 1-800-242-3447 To minimize potential adverse environmental effects, pipeline projects should be designed to avoid crossing any water body</p>		<ul style="list-style-type: none"> This program does not support member's purchase of additional water units or ongoing fees for water use Routine maintenance or replacement Surface or shallow pipelines (Investigate On-Farm Stewardship Program) A series of distribution pipelines (For example: rotation grazing operations, acreage developments, etc.) Irrigation pipeline systems

LONG-TERM WATER MANAGEMENT PLAN (LTWMP)

Plan Development Package and Instructions

Table of Contents

1) Template (Pages 2-5)

- **LTWMP Client Identification** form (2 sections)
- **Calculation Worksheet** (12 columns best printed in Landscape on Legal sized paper)
- **Recording Worksheet** (6 columns best printed in Landscape on Legal sized paper)
- **Map** (best printed in Portrait on Letter sized paper)

This is what needs to be completed and submitted for an AF Water Specialist to review
If the exact location of a proposed water project is known complete an Environmental Checklist for it and submit as well.

Please send to:

Alberta Agriculture and Forestry
Growing Forward – Strategy and Program Delivery Branch
Rm. 201, 7000 113 Street NW
Edmonton, AB T6H 5T6
Fax: 780-427-5921

2) Directions on how to complete the LTWMP Template (Pages 6-11)

3) Example of a completed Template (Pages 12-14)

4) Information and Resources (Pages 15-16)

- Dugout Volume Calculation
- Information Resources

Producer Eligibility for On-Farm Water Management Program

If your answer is **No** to either of the following questions you may not be eligible to the [On-Farm Water Management Program](#).

Do you or your corporation file Income Tax in Alberta?

Yes No

Do you or your corporation have a valid Alberta Farm Fuel Benefit Number?

Yes No

If you intend to apply to the On-Farm Water Management Program you may wish to verify your eligibility before starting the LTWMP process....Call 310-FARM (3276) if you have questions

LTWMP Client Identification

LTWMP Client ID # Assigned
For Office Use Only _____

Client Name: (Legal Name or Corporate Name)			
Primary Contact (first name/last name) (if different from above):			
Mailing Address:		City/Town:	Postal Code:
Cellphone: ()	Telephone: ()	Fax: ()	Email address:
Legal Land Location of HOMEYARD: QTR _____ - SEC _____ - TWP _____ - RGE _____ - MER _____		Municipal District/County:	
Describe your farming operation by checking the appropriate boxes:			
<input type="checkbox"/> oilseed and grain farming	<input type="checkbox"/> hog farming		
<input type="checkbox"/> other crop farming: (describe) _____	<input type="checkbox"/> poultry and egg farming		
<input type="checkbox"/> cattle ranching	<input type="checkbox"/> sheep and goat farming		
<input type="checkbox"/> dairy cattle and milk production	<input type="checkbox"/> other animal production: (describe) _____		
<input type="checkbox"/> cattle feedlot &/or backgrounding operation			

Producer Declaration NOTE: PLEASE READ THIS CAREFULLY AND COMPLETE LTWMP BEFORE SIGNING

I, _____ of _____,
Print name City/Town

certify that the information I have provided in this Long Term Water Management Plan is true, complete and correct. I am signing this declaration with respect to all projects described in this document.

I understand that:

1. AF will use my approved Long Term Water Management Plan to assist me in future farm planning.
2. AF will use aggregate data from my approved Long Term Water Management Plan and application for grants to Growing Forward 2 (GF2) to track, report and improve this program and future GF programs.

LEGAL NAME OF APPLICANT (please print): _____

SIGNATURE: _____ DATE: _____

Please indicate if you would like to receive program updates, information and news on Growing Forward programs. You may select both options.

Yes, I would like to receive by email and/or post, information about Growing Forward 2 Programs, include the bi-annual AgriBusiness Forward publication.

I would like to receive these by: email hard copy (Canada Post)

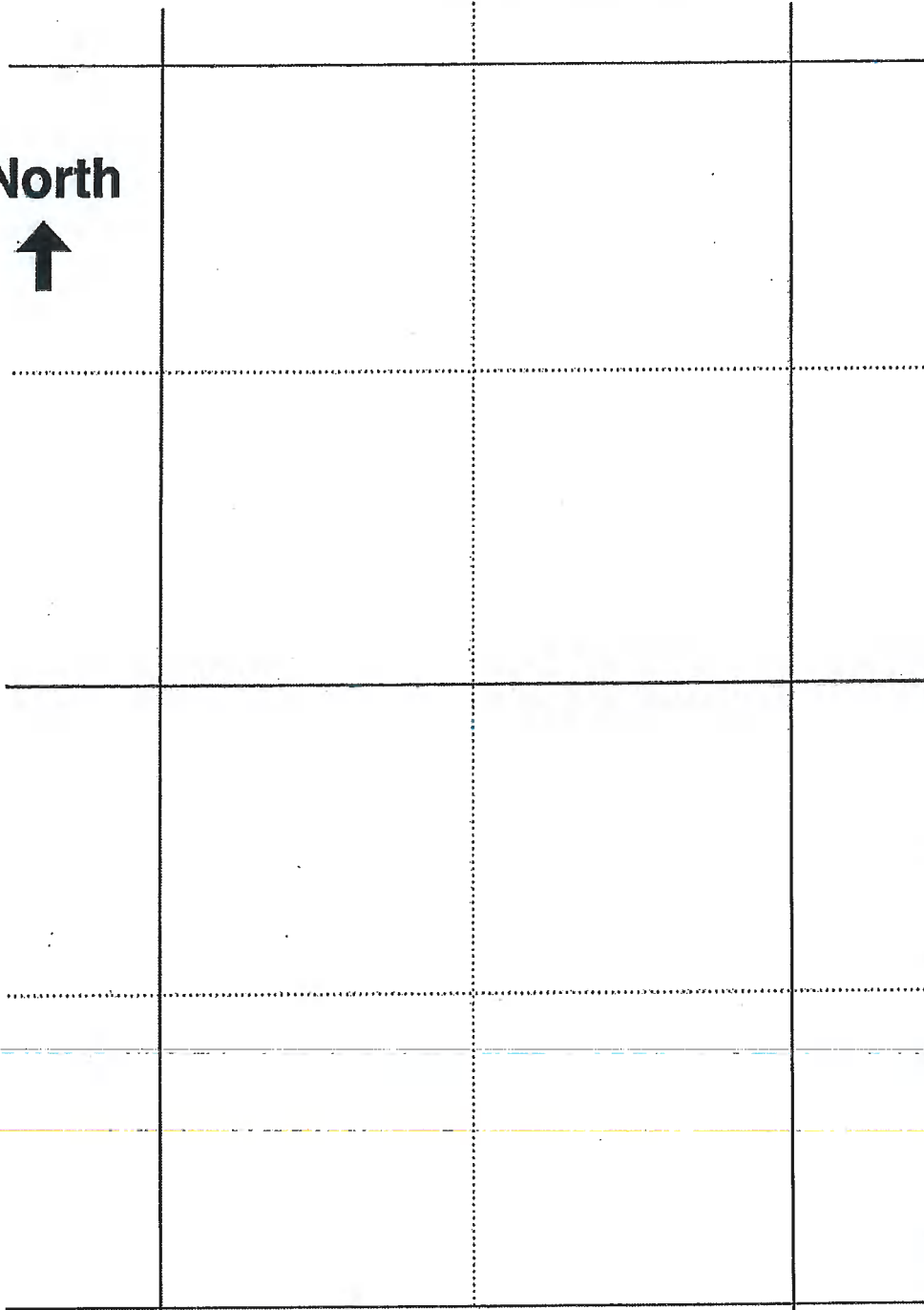
The personal information that you provide on this form and any attachments will be used for the purpose of administering the Growing Forward 2 – On-Farm Water Management Program. It is collected under the authority of section 33 (c) of the Freedom of Information and Protection of Privacy Act and is protected by the privacy provisions of the Act. Any questions about the collection, use or disclosure of this information can be directed to the Growing Forward Coordination and Program Policy Branch Head at: 201, 7000 113 Street NW, Edmonton AB T6H5T5; Telephone (780) 422-9167; toll free dial 310-0000 followed by telephone number, or fax (780) 427-5921

Your Name:		Long Term Water Management Plan - Calculation Worksheet										For AF Use only: L.TWMP ClientID#	
Your Phone #:													
Volume Units Used:		Annual Water Needs Assessment					Annual Water Supply Inventory						
Land Location West of _____ (Carry forward to next page)		Existing Water Source (Mapped ID)	Type of Use	No. of People or Livestock or Acres	X Volume Used Per Day	= Total Quantity Per Day	X No. of Days	= Volume Per Year Required	Existing Water Source Details ← Construction or installation information Well Production or Dugout Volume ⇒	B Volume Per Year Supplied	Additional Volume Per Year Required (A-B) (Carry forward to next page)		
A													
B													
C													
D													
	1	2	3	4	5	6	7	8	9	10	11	12	

Your name: Your Phone #:		Long Term Water Management Plan - Recording Worksheet				For AF Use only: LTWMP ClientID#
Volume Units Used: Land Location West of _____ (From previous page)		Additional Volume Per Year Required (From previous page)	Water Source Concerns	Investigation to date	Proposed Improvements (Include dimensions or volume for dugout or dam if known)	Priority
A						
B						
C						
D						
	1 (repeat)	12 (repeat)	13	14	15	16

Map of LTWMP

North
↑



Your name:

Your phone#

(For AF Use below)
LTWMP ClientID#

Legend

- Water well
- Dugout
- ≡ Canal
- ▽ Spring
- ↘ Watercourse
- ⊘ Dam
- ⊕ Waterbody
- ⬆ House
- △ Pumpsite/turnout
- ▨ Irrigation
- ST □ Stock tank
- Pipeline
- *-*- Fence

Directions
Proposed improvements should be dashed or circled in dashes.

Indicate distance of new projects to natural water bodies if closer than 100 ft

← 100 ft →

ID Created for

Directions on how to complete the LTWMP Template

What is the purpose of a Long Term Water Management Plan (LTWMP)?

A LTWMP will help to ensure that your farm has a sustainable water source(s) to meet the present and future water supply and water quality needs. Although individual LTWMP's may vary, all plans should address the security of a supply during drought periods, as well as ways to protect the supply from contamination or improve water quality. Ideally the LTWMP **should cover the complete extent of your farming operation**, either owned or regularly rented (if you are allowed access to the water supplies or sources available on them). Some more remote quarters or parcels of land can be left out if they do not have a water shortage and the water cannot be considered a water asset that can be shared with the rest of the farm.

How to Develop a LTWMP

The following is a step by step approach to developing a plan for your farm. The **Bolded** words in the descriptions refer to worksheets or other documents provided in the LTWMP package. Internet links to Agdex factsheets are provided at the end of this document.

Step 1

A review of the AF factsheet Agdex # 716(A01) **Drought Proofing Farm Water Supplies** provides a good overview of the options to consider when drought proofing your farm.

Step 2

- A) Ensure that all required documents have been provided in mailed package or printed out completely from website
- B) This includes:
 - **LTWMP Client Identification and Producer Declaration form**
 - **a Calculation Worksheet (12 columns)**
 - **a Recording Worksheet (6 columns) and**
 - **a Map of LTWMP**
- C) An example has been provided, using Imperial gallons (lgal) as the unit. Determine the unit of measurement to be used and identify it in the ID block or beside each number entered. Example litres (L), cubic meters (m³), acre feet (for irrigation).

Step 3

- A) Begin developing a LTWMP for your own farm. Start by identifying yourself by completing the **LTWMP Client Identification** block. After you have completed the remaining pages required you can return to complete the **Producer Declaration** block. The remaining pages also have an identification block to be filled out in the top left corner (or top right for the **Map**). The LTWMP ID# referred to will be assigned by AF staff.
- B) Next, Using the **Calculation Worksheet** identify the land location of all existing water sources used by the agricultural operation in Column 1.
 - If there are multiple water sources on a single land location, evaluate each source individually. (e.g.) For a grazing situation that has several paddocks with individual water sources, on a single quarter section of land, identify and evaluate each paddock.
 - If there are locations that do not have an existing water source, but developing the source is planned, indicate the land location on the plan.
 - If expansion plans are being proposed, you may want to consider this in your proposed improvements. (e.g.) If an area is to be converted from crop land to pasture land and a water source is required, record the proposed water supply improvements. This may provide assistance when deciding the location a new well or dugout.
 - If your farm consists of land parcels owned individually but you manage your water needs and assets together you may wish to consider your LTWMP together. Discuss with your AF Water Specialist who will be reviewing it.
- C) Indicate each water source use/purpose using descriptor names for easy identification, such as Well (W1), Dugout (D1), Irrigation (I1) etc., in Column 2.
- D) Describe what the water source is being used for in Column 3. (e.g.) Household, cow/calf, yearlings etc.
- E) Indicate the number of users of the water in Column 4.
- F) Provide an estimated daily water volume for each user, in Column 5.
 - These values can be found in the AF factsheet Agdex #716 (C01) **Farm Water Supply Requirements**. It contains the daily volumes of water required for people, livestock and other farm uses. (e.g.) People require 60 imperial gallons per day; a cow/calf pair requires 12 imperial gallons, etc.
 - If you currently meter your water consumption and have water use rates that differ from default values, use the metered rates. Please indicate this with an 'M' beside the number, i.e. 12.0 lgal M.
- G) In Column 6, calculate the daily water requirement for the water source. Include the units being utilized.

$$\text{Total Quantity per Day} = \text{No. users} \times \text{volume consumed per day}$$

- H) Provide an estimate of the total number of days that the water source will be used by each user, in Column 7.
- I) Calculate the total, yearly requirement of the water source, in Column 8

$$\text{Total Yearly Requirement} = \text{Total Quantity Per Day} \times \text{No. of Days}$$

Step 4

- A) Complete the “Annual Water Supply Inventory” portion (Columns 9-11) of the **Calculation Worksheet**. It indicates information about the water source and its capacity.

For Wells

- A) Under “Existing Water Source Details” (Column 9) record the:

- Well diameter
 - Well depth and
 - Well identification number
- Generally this information can be found on a Water Well Drilling Report. If needed refer to the last page for the Alberta Water Well Information Database.
- If any new well production information is available, use these values instead.

- B) In Column 10, indicate the well production or capacity.

- C) Determine the expected “Volume Per Year Supplied” as follows:

$$\text{Expected Volume Per Year Supplied} = \text{Well production} \times 8 \text{ hours} \times 60 \text{ minutes} \times 365 \text{ days/year}$$

NOTE: This assumes that the well(s) will supply all daily water requirements in an 8 hour period.

- D) Record the total volume in Column 11.

For Dugouts

- A) Under “Existing Water Source Details” (Column 9), record the:

- Top width
- Top length
- Depth
- Side slopes
- End slopes

- B) Determine the expected total volume of the dugout using the formula on the accompanying **Dugout Volume Calculation** page or an on-line calculator available on the AF website (www.agric.gov.ab.ca).

- C) Record the total source volume in Column 10.

- D) In Column 11, indicate the annual (yearly) volume of water that can be supplied from that water source.

NOTE: Dugouts are often built to store 2, 3 or 4 years worth of water requirements. Only indicate the expected water volume for 1 year. (e.g.) If a dugout is built to store the runoff from 2 years, the yearly supply to the dugout is expected to be ½ the total storage volume.

Step 5

A) Next, determine any "Additional Annual Volume Required" as follows and record the value in Column 12:

$$\begin{array}{rclcl} \text{Additional Water} & = & \text{Volume per Year} & - & \text{Volume per} \\ \text{Per Year Required} & & \text{Required} & & \text{Year Supplied} \\ & & \text{(Column 8)} & & \text{(Column 11)} \end{array}$$

- This will identify the amount of water that will be in surplus or required on an annual basis for each water source.
- Consider each water source individually and the impact of extended periods of drought.
- If additional water is required then water supply improvements should be made.

NOTE: If the water supplied exceeds the requirement or the water required is equal to the water supplied, that is acceptable.

Step 6

A) From the **Calculation Worksheet** carefully transfer the "Land Location" (Column 1) and "Additional Annual Volume Required" (Column 12) to the **Recording Worksheet**. The **Recording Worksheet** will become the basis for the water supply improvements you need to undertake.

Step 7

A) Identify and record all "Water Source Concerns" in Column 13. This may include concerns regarding:

- quality
- quantity
- dependability concerns

For example:

Wells

- The life expectancy of metal well casing and liners is approximately 20 years while plastic casing and liners will last much longer.
- Are the non-pumping water levels in your well(s) steadily dropping over a period of months or years? This could indicate a depleting groundwater supply.
- Are you noticing a decreased supply from your well but the pumping water levels in well (s) are steady? This could indicate plugging of the well intake due to biofouling, sediment or mineral incrustation.
- Are there increased sediment problems or deterioration in well water quality?

➤ The publication "Water Wells That Last" will be helpful in assessing the dependability of your well supply and for planning new wells.

Dugouts

- Does your dugout(s) fill with runoff water in at least 8 years out of 10?
 - Does your dugout contain at least a 2-year water supply plus losses due to evaporation or ice? In Alberta, ice depths during the winter typically range from 1.3 feet in the south to 3 feet in the north. Expected evaporation losses during the summer range from 3.5 feet in the south to 1.5 feet in the north.
 - Has your dugout(s) lost considerable volume and depth due to sediment?
 - Is it difficult to maintain good quality water in the dugout?
- The publication, “Quality Farm Dugouts” will be helpful in assessing the dependability of your Dugout water supply and for planning new Dugouts.

Step 8

- A) On the **Recording Worksheet**, under “Investigations to Date” (Column 14) list the steps you have already taken or people you have contacted to discuss your water source options.
- Consultations regarding this information may help identify useful information that may have been missed or other potential solutions.

Step 9

- A) Identify and record the “Proposed Improvements” in Column 15 on the **Recording Worksheet**.
This may include:
- Projects to construct to address shortfall or
 - Management changes to how the water is used

NOTE: If a water source does not require attention, indicate that no action is being proposed.

Step 10

- A) Assign a priority for each “Proposed Improvement” in Column 16 on the **Recording Worksheet**.

Step 11

- A) Use the **Map of LTWMP** to provide a drawing of all the land locations involved in the plan. As in the example map, **accurately and clearly identify** the legal land location **and north direction** on it.
- B) Show both the existing water sources (solid lines) as well as proposed improvements (in dashes).
- Air photos may assist to locate features more accurately.
 - Symbols commonly used to identify map features are listed in the legend.
 - Define other ID's or symbols at the bottom of the map if needed.
 - Review and follow the directions of the [Environmental Checklist](#) document to determine whether the proposed location of your new project will flag environmental concerns.
 - Provide mailing and contact information in the top right hand corner of your map

Step 12

- A) Contact an AF Water Specialist or contact names they have provided, if you need assistance with the LTWMP for your farm.

Step 13

- A) Review and update your LTWMP when significant changes occur to your farm water sources and requirements. If you want to apply for a grant to any new project ensure you have contacted your AF Water Specialist prior to starting your project so that the amendment can be recorded.

Your Name: Your Phone #:		Long Term Water Management Plan - Calculation Worksheet										For AF Use only: LTWMP Client ID#	
		Annual Water Needs Assessment					Annual Water Supply Inventory						
Land Location West of <u>4</u> (Carry forward to next page)	Existing Water Source (Mapped ID)	Type of Use	No. of People or Livestock or Acres	Volume Used Per Day	Total Quantity Per Day	No. of Days	Volume Per Year Required	Existing Water Source Details =< Construction or installation information Well Production or Dugout Volume =>	Volume Per Year Supplied	Additional Volume Per Year Required (A-B) (Carry forward to next page)			
A	NW 30-59-30	house hold cow/calf	4 people 130 pairs	60 Igal 12 Igal	240 1560	365 240	87,600 +374,400 462,000 Igal	well - 6 inch dia. 150 feet deep Well ID 047000 Constructed 1979	350,400 Igal 2.0 gpm X 60 min X 8 hrs/day X 365 days	111,600 Igal short (350,400 - 462,000)			
B	NE 30-59-30	cow/calf	70 pairs	12 Igal	840	120	100,800 Igal	Dugout dimensions 50 ft x 70 ft x 9 ft (2:1 sideslopes & 2:1 endslopes)	50,000 Igal 100,000 Divided by 2 yr	50,800 Igal short			
C	SE 30-59-30	cow/calf	60 pairs	12 Igal	720	120	86,400 Igal	Dugout dimensions 80 ft x 50 ft x 8 ft (2:1 sideslopes & 2:1 endslopes)	56,000 Igal 112,000 Divided by 2 yr	30,400 Igal short			
D	SE 31-59-30	yearlings	100	7 Igal	700	120	84,000 Igal	Dugout dimensions 170 ft x 70 ft x 14 ft (4 :1 endslopes & 1.5 :1 sideslopes)	268,000 Igal 536,000 Divided by 2 yr	184,000 Igal surplus			
E	NW 31-59-30	Irrigation of forage	80 acres	-	-	~ 15 days	40 Acre-feet	Licensed withdrawal from Cold Creek June -Aug	40 Acre-feet	0			
	1	2	3	4	5	6	7	8	9	10	11	12	

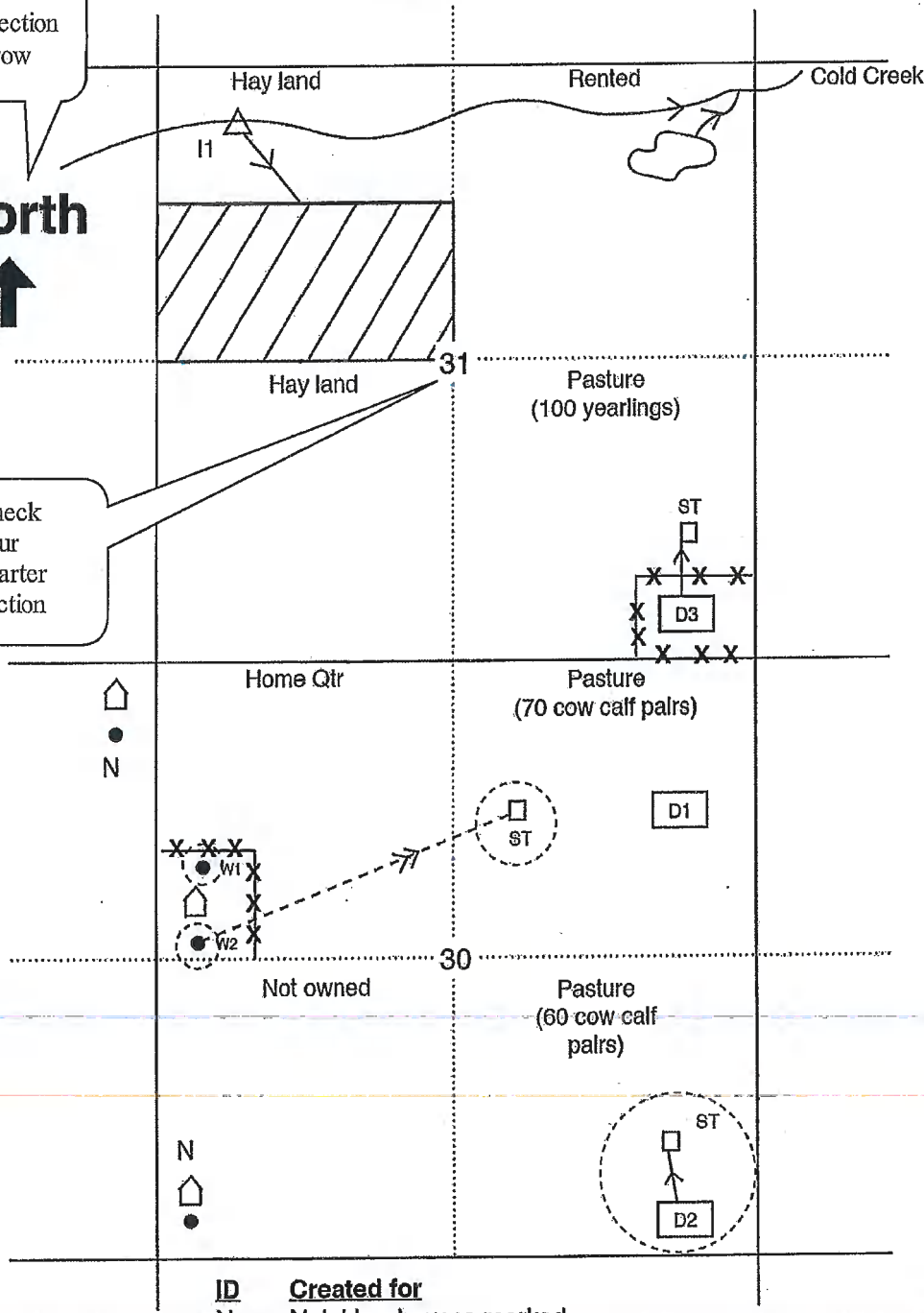
Your Name: Your Phone #: Volume Units Used:		Long Term Water Management Plan - Recording Worksheet				For AF Use only: LTWMP Client ID#
Land Location West of <u>4</u> (From previous page)	Additional Volume Per Year Required (From previous page)	Water Source Concerns	Investigation to date	Proposed Improvements (Include dimensions or volume for dugout or dam if known)	Priority	
A NW 30-59-30	111,600 Igal	Insufficient well capacity on regular basis, Well water quality problems Over 30 year old well	Neighbors say they have better wells 80' deeper Check out neighboring well records on government database	New deeper well (W2) to improve supply and quality Abandon old well after new well performance proved	High	
B NE 30-59-30	50,800 Igal	Lack of water and cattle access difficult Dugout water quality concern - algae	Pipeline plow for shallow burial available through county office	Treat and/or aerate in interim Abandon dugout (D1) and replace with a pipeline system from new well (W2)	Med	
C SE 30-59-30	30,400 Igal	Dry by August	Check runoff area filling dugout Inquire about seepage potential in area Check for ditching in drainage area Check GF Grazing Program for application	Clean dugout (D2) and add exclusion fencing, aeration, floating intake and remote watering system for grazing	Med	
D SE 31-59-30	184,000 Igal (surplus)	No problems identified and has solar powered pumping system	Discuss with parents - dugout fills every year	None identified for dugout (D3) Potential supply for emergency water pumping or hauling	Low	
E NW 31-59-30	0	Intake plugs with fish and debris Water usage unclear	Review license and DFO regulations	Install improved intake (I1) with fish screen Install meter to measure withdrawal rate and volume for records kept	Med	
1 (repeat)	12 (repeat)	13	14	15	16	

Map of LTWMP- Example

Include North Direction Arrow



Check your quarter section



Your name:
John Doe

Your phone#:
(780) 000-0000

(For AF Use below)
LTWMP ClientID#:
123456

Legend

- Water well
- Dugout
- ≡ Canal
- ▽ Spring
- ↗ Watercourse
- ⊘ Dam
- ☁ Waterbody
- 🏠 House
- △ Pumpsite/turnout
- ▨ Irrigation
- ST □ Stock tank
- Pipeline
- *** Fence

Directions
Proposed Improvements should be dashed or circled in dashes.

Indicate distance of new projects to natural water bodies if closer than 100 ft

← 100 ft →

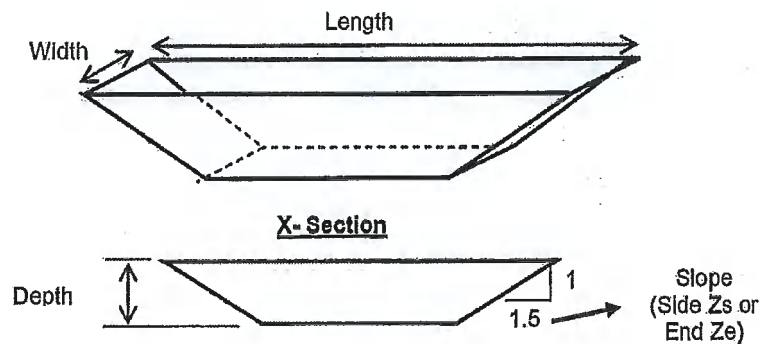
ID _____
N _____
Created for
Neighbor houses marked _____

Dugout Volume Calculation

This dugout volume calculation can be used to estimate the water volume stored in your existing dugout(s). If you are planning new dugouts, first review the publication "Quality Farm Dugouts"

1. Measure the top length and top width and average depth along the bottom of the dugout.
2. Estimate the slope of sides and ends of the dugout as follows:

Measure the depth of water at several distances from the dugout edge along both sides and the ends. This can be done with a pole with a tape measure secured to it. The slope is a ratio between the horizontal distance and vertical distance (or depth). Example: If the water is 1' deep at 1.5' from the water's edge the slope is 1.5 ft to 1 ft or 1.5 to 1 (also noted as 1.5:1 or 1.5). See drawings below.



3. Use the above measured values in the formula described below:

$$V = [W - (Z_s \times d)] \times [L - (Z_e \times d)] \times d \times 6.23 \text{ gal/ft}^3$$

Where: V = dugout volume in Imperial Gallons
 W = Top Width in feet
 L = Top Length in feet
 d = depth in feet
 Z_s = side slope
 Z_e = end slope

Example:

$$L = 200 \text{ ft}, W = 100 \text{ ft}, d = 14 \text{ ft}, Z_s = 1.5:1, Z_e = 4:1$$

$$V = [100 - (1.5 \times 14)] \times [(200 - (4 \times 14))] \times 14 \times 6.23 \text{ gal/ft}^3$$

$$V = [100 - 21] \times [200 - 56] \times 14 \times 6.23 \text{ gal/ft}^3 = 992,215 \text{ Imp gal}$$

Note: This is a simplified formula to give an approximation of the dugout volume. It tends to give a volume smaller than the true volume. An easier to use and accurate [volume calculator](http://www.agric.gov.ab.ca/app19/calc/volume/dugout.jsp) is available on the AF website at <http://www.agric.gov.ab.ca/app19/calc/volume/dugout.jsp>

Major AF Internet Links on Rop'in the Web

Alberta Agriculture and Forestry ([AF](#))

[Drought Proofing Farm Water Supplies](#)

[Farm Water Supply Requirements](#)

[Quality Farm Dugouts](#)

[Water Wells That Last](#)

Other Resources

Ropin The Web (AF)

- Navigate to [Ag Engineering/ Farm Water](#) for complete list
 - Analysis and Treatment
 - Drought Management
 - Dugouts and Dams
 - Quality
 - Requirements
 - Water Systems
 - Wells and Springs

[Alberta Water Well Information Database](#) , Alberta Environment and Parks (780) 427-2770

Related tools

[Rural Water Quality Information Tool](#)

[Irrigation Water Allocation Calculator](#)

[Alberta Soil Information Viewer](#)

Clear Hills County

Request For Decision (RFD)

Meeting:	Agricultural Service Board Meeting
Meeting Date:	January 9, 2017
Originated By:	Aaron Zylstra, Agricultural Fieldman
Title:	AGRICULTURAL FIELDMAN REPORT
File No:	63-10-02

DESCRIPTION:

At this time the Agricultural Fieldman will have an opportunity to present his report.

BACKGROUND / PROPOSAL:

ATTACHMENTS:

- Greg- Agricultural Fieldman Report-Jan 9

RECOMMENDED ACTION:

RESOLUTION by _____ that the Agricultural Service Board accepts the January 9, 2017 Agricultural Fieldman report for information.

Initials show support - Reviewed by: Manager: *ABJ* AgFieldman: *AC*

CLEAR HILLS COUNTY

AGRICULTURAL FIELDMAN REPORT

JAN 9, 2017

GREG COON

PEST CONTROL

- **Wolf numbers:**

Wolves Claimed Since 2010 & Cost Associated with Claims			
Year	Comments	Wolves	Cost
2010	start of program - adults \$500; juvenile \$250	46	\$ 22,250.00
2011		88	\$ 44,500.00
2012	adults \$500; juvenile \$350	102	\$ 43,500.00
2013	all wolves \$250ea; Only private property & grazing leases are eligible as of March 2013 C195-13(03/26/13)	69	\$ 17,250.00
2014		58	\$ 14,500.00
2015	Incentive increased from \$250 to \$400 in October 2015; C492-15(10/13/15)	53	\$ 17,150.00
2016	Jan 2016 accept unskinned carcasses only; C52-16(01/26/16); Bear Canyon Pasture \$500/wolf bounty initiated.	107	\$ 42,800.00
2017		0	\$ -
2018		0	\$ -
2019		0	\$ -
Total		523	\$ 201,950.00

- **Coyotes claimed 2016:**

Total #	Total \$
342	\$10,260.00

- **Beaver tails claimed 2016:**

Total #	Total \$
262	\$7860.00

Rental Equipment Usage January 1, 2016 - December 31, 2016

Equipment	Rental Rates	Total Users	Total Days	Total Revenue
Backpack Sprayer	\$ -	1	1	\$ -
Bale Scale	\$ 30.00	3	3	\$ 90.00
Bale Tester	\$ 10.00			
Ball Hitch (2" & 2 5/16")	\$ -			
Livestock Ultrasound	\$ 25.00			
Chairs	\$0.5/chair	9	10	\$ 321.00
Community Centre	\$ 50.00	4	5	\$ 250.00
Corral Panels	\$ 50.00	3	4	\$ 100.00
Coyote Trap	\$ -			
Eco-Bran Applicator	\$ 50.00	1	1	\$ 50.00
Grain Bag Roller	\$ -	6	10	\$ -
Grain Bagger	\$ 350.00	3	3	\$ 1,050.00
Grain Bag Extractor	\$ 350.00	3	3	\$ 1,050.00
Grain Vac	\$ 200.00	25	26	\$ 5,200.00
Grass Seeders-Hand Held	\$ 5.00			
Grass Seeders-Quad Mount	\$ 5.00			
Grill	\$ 5.00	3	11	\$ 55.00
Hand Held Rope Wick	\$ 10.00	2	2	\$ 20.00
Land Leveller	\$ 130.00	3	3	\$ 390.00
Loading Chute	\$ 25.00	17	18	\$ 450.00
Manure Spreader	\$ 150.00	2	8	\$ 1,200.00
Mulch Applicator	\$ 25.00			
Extra Hoses	\$ 1.00	2	2	\$ 67.50
Post Pounder	\$ 125.00	14	16	\$ 2,000.00
Pull/Push Roller Applicator	\$ -			
Quad Mount Rope Wick	\$ -			
Quad Mounted Sprayer	\$ -	5	5	\$ -
Quad Pull Type Sprayer	\$ -	4	4	\$ -
RFID Tag Reader	\$ -			
Rock Picker	\$ 300.00	2	2	\$ 600.00
Rock Rake	\$ 300.00	1	2	\$ 600.00
Roller Mill	\$ 20.00	1	2	\$ 40.00
Rotowiper	\$ 75.00	2	3	\$ 150.00
Scare Cannon #91060254	\$ -			
Signs	\$ -	1		
Skid Mount Sprayer	\$ -	2	2	\$ -
Steam Tables	\$ 5.00			
Tables	\$1.00/table	5	5	\$ 111.00
Toilets	\$ 40.00	1	3	\$ 120.00
Tree Spade	\$ 150.00	7	8	\$ 1,200.00
Truck Mount Sprayer	\$ 100.00			
Wash Station	\$ 10.00	3	5	\$ 40.00
Water Pumps	\$75.00(Summer) \$200 (Winter)	26	44	\$ 4,300.00
Zero Till Drills	\$300.00/20 feet	5	6	\$ 1,800.00
Wire Roller	\$ 25.00	6	8	\$ 200.00
Post Hole Auger	\$ 25.00	2	2	\$ 50.00
Sickle Mower				
BBQ Trailer	50	3	3	\$ 150.00
48		177	230	\$ 21,654.50

OTHER TOPICS

Learnings from In Service Training attended by Greg Coon Dec 5-8, 2016

Monday Dec 5, 2016

-Attended the "Fieldman Orientation" session featuring Doug Macauley as speaker. This session is a requirement for new fieldmen in order to become certified. The session covered the history of the Agricultural Service Board Act and Agricultural Fieldmen in Alberta. It then went on to give a good overview of the key task areas and legislation that a fieldman is tasked with enacting and enforcing. This session was a very good starting point for a new ag fieldman.

- Attended "Policy and Resolution Writing 101" with Doug Macauley. He covered the 3 steps of good resolution writing as well as some good general writing tips. I have worked mainly in the private sector, so resolution writing wasn't something I have done. This course was helpful.

Tuesday Dec 6, 2016

-Attended "Effective Communication Skills For Supervisors" with Paula Goebel. She covered a wide range of skills and tips for effective communication that can be applied in all business as well as personal communication.

-Attended "Health Safety and Wellness; Latest Ideas from an Emergency Physician" with Dr. Louie Francescutti. Dr. Francescutti is a fantastic speaker. He covered a wide range of subjects around personal well-being and how important health and wellness is to your work and personal life. Plenty of humor and thought provoking questions kept the audience fully engaged.

-Attended "Biobeds for Pesticide Waste Disposal" with Tom Wolf. This presentation gave an overview of how to build a biobed from organic materials in a mulch to use for an environmentally sound method of disposing of leftover pesticide. He showed quite a number of different ways of building them as well as test results showing the effectiveness of biobeds that are in use today. I see value in bringing more information on biobeds back to our producers and perhaps have PCBFA facilitate a seminar on this.

-Attended "Introduction To Alberta Emergency Management" with John Lamb from Alberta Emergency Management Agency. He gave an overview of what AEMA does in regards to disasters and emergency events. The province is divided up into 7 different regions with each region having their own field officer. In the event of a disaster such as the Ft MacMurray wildfires, these officers act as liaisons' with all of the emergency services available in the province and can activate this help when needed.

-Attended "Application Technology" with Tom Wolf. Tom is a sprayer Specialist. He spoke about how to use nozzle types, different pressures and travel speeds to provide effective herbicide application. He did a very good demonstration on plant coverage and also a demo on pulse width modulation.

Attended "So You Want To Be A Weed Specialist" with Nicole Kimmel. Nicole is a weed specialist with Alberta Agriculture and Forestry. She gave a presentation on a Flowering Rush infestation in Lake Isle that she had to deal with and all of the extra steps and hurdles there was to deal with spraying a herbicide in a water body. A very interesting presentation.

Wednesday Dec 7, 2016

- Attended "Rural/Urban Relationships" with Kelly Cooley. Kelly gave a presentation about ASBs being in the best position to partner with urban jurisdictions to manage invasive species in the urban areas that border their respective municipalities. He used the County of Newell as a case study, which showed very positive results for both the urban and rural jurisdictions.
- Attended "Prairie Solar Opportunities" with Rob Harlan from the Solar Energy Society of Alberta. Rob gave a presentation that showed the science and economics of solar power and how it is becoming more economically feasible for producers. He included a great deal of facts and figures to back up his presentation.
- Attended "Starland County Solar Initiative" with Al Hampton. Al is an ag fieldman and farmer in Starland County. Al's municipality started with a solar initiative by powering some of their pumping stations with solar power. This garnered interest from producers in the area and the county provided information on setup, purchasing, and government funding available to producers. This prompted Al to set up a 10KW system on his farm and to this point, he is very pleased with the performance and economic feasibility of the system. I think promoting a solar workshop in our county would be beneficial to our ratepayers.
- Attended "Flowering Rush Project" with Cody McIntosh from Red Deer County. This was a similar presentation to Nicole Kimmel's presentation only this was more results oriented from the county's perspective. This weed is very difficult to control or eradicate. The County has had a tough time dealing with all the legislation involved but have persevered and have made good gains in controlling the infestation.
- Attended "Strategies to Control the Hazards of Grain Handling and Storage" with Glen Blahey from CASA. Glen presented some hazards associated with grain storage and some ways of eliminating these hazards. Many accidents and deaths result from improper handling and storage of grain in the country. These can be avoided with proper handling and storage techniques. CASA has a grain safety demonstration trailer, as well as other grain safety demonstrations that are available. I obtained Glens contact information after his presentation so that the County could investigate having CASA bring their grain safety trailer or one of their other demonstrations to our trade Show.
- Attended "Freemen Of The Land" with Christopher Perry. This presentation gave insight into the radical group that call themselves "Freemen on the Land" or "Sovereign Citizens" This group believes that they are bound by statute law only if they consent to those laws. They often rent from property owners and then within a short time refuse to pay rent and refuse to leave the land, even going as far as somehow putting a lien against the land. This is good information to pass on to our weed inspectors to be aware that these types of people are out there and to use caution and follow the working alone procedures.
- Attended "Young Cattlemen in Alberta" with Emily Ritchie from the Canadian Cattleman's Association. Emily gave an overview of the young cattleman programs in Canada and some of the opportunities for young people in or interested in the cattle industry.

Thursday Dec 8, 2016

- Attended "Adapting To Climate Change" with Dave Sauchyn. This presentation dealt with historical data to show how much the climate has changed in the past thousand years. The content was very scientific in nature and I found it a bit hard to follow.
 - Attended "Room For Every Farmer-A Global Perspective of Agriculture" with Brenda Schöepp. Brenda shared a lot of stories about her experiences in different parts of the world and how agriculture is viewed so much differently in other countries than it is viewed here. She gave examples of how having a small garden is considered agriculture in some countries and how this open minded way of thinking can be beneficial to agriculture in Canada.
 - Attended "Cover Crops to Profit Above Ground and Create Wealth Below" with Grant Lastiwka. Grant presented information around how a good mix of cover crop cocktails can extend growing seasons as well as adding root matter and capturing nitrogen to benefit soil quality. He took us from the idea that "soil grows plants" to the idea that "plants grow soil" The longer period of time that green leaf plants are on the soil, the more carbon is captured, in turn creating diverse root systems which creates healthier soils.
 - Attended "Buzz on Bees" with Maryam Sultan. Maryam's presentation provided very interesting information on bees and the biology of their hives. She elaborated on bee health as well as hive health issues, as well as some of the research being done at the Bayer Bee Care Center. She is a good speaker. She was well prepared and very informative.
 - Attended "The Challenges of a Disabled Man Growing Up in Rural Alberta" with Dausin Kluin. Dausin has Cerebral Palsy but he never let that get in the way of his dreams and aspirations. He became a world class arm wrestler and an inspirational speaker. A great feel good way to conclude the conference.
- I will be writing the pesticide applicators exam on Feb 1st, 2017 at GPRC.

Clear Hills County

Request For Decision (RFD)

Meeting:	Agricultural Service Board Meeting
Meeting Date:	January 9, 2017
Originated By:	Aaron Zylstra, Agricultural Fieldman
Title:	BOARD REPORTS
File No:	63-10-02

DESCRIPTION:

At this time the Board members will have an opportunity to present their reports.

BACKGROUND / PROPOSAL:

At this time the Board members will have an opportunity to report on meetings attended and other agricultural related topics.

ATTACHMENTS:

- Member Ross

RECOMMENDED ACTION:

RESOLUTION by _____ that this Agricultural Service Board accepts the Board members' written or verbal reports of January 9, 2017 for information.

Initials show support - Reviewed by: Manager: *ABj* AgFieldman: *AC*

Watershed Management Rycroft Oct. 31/16

By: Mackay Ross

Marsha Trites-Russell with Wetlands Specialist with Alberta Energy and Utilities Board

When constructing/working on the land, Wetlands should be; Avoided, Minimize disturbance, or Replaced. Prior to 2015 the replacement was done at a 3:1 factor, since then a scale dictates value between 0.125:1 and 8:1.

Wetland values vary which impacts replacement; if there are a large number of the same type of wetland nearby, then the replacement requirements will be lower.

Alberta has lost an estimated 75% of its wetlands in the white zone.

The province is going to increasingly put the wetland management on the counties[Ⓢ]

wetlandsalberta.ca is a great resource.

Jay White, Wetlands Specialist, Owner of Aquality Environmental Consulting

A quick review of an excellent day discussing wetlands with him in Grande Prairie back in the spring.

County needs to map its wetlands.

Les Klerke

Trends in consumerism.

Who is making the decisions? Consumers? MacDonalds makes most off the rules.

Agriculture is a business, if you are not in it for the profit, you won't farm long. Or if you have off farm income, you will only get as far as that money into the farm will take you.

Brazil is the major agriculture competitor and Portugese is the eighth most used language on the internet yet only 220-260 million people in the world speak Portuguese.

Shelterbelts to Eco-buffers; Attracting beneficial insects to your property

Luke Wonneck of the Agroforestry & Woodlot Extension Society

By: MacKay Ross

Prairie Farm Rehabilitation Administration established in 1935, over 2000 km of shelterbelts planted in the 30's to slow soil loss and evaporation. Shelterbelt centre (1901) and Experimental farm (1905) were established allowing instant, effective, shelterbelt production then and until PFRA was closed in 2013. Since 2013 many organizations have filled the vacuum left behind, including Clear Hills County☺

Shelterbelts are being removed at an alarming rate, mostly due to larger equipment but also due to age and lack of perceived benefit.

How relevant are shelterbelts today? Studies are ongoing and past studies reveal up to 32.7% of a piece of land can have natural or semi-natural area before the yield is negatively influenced.

Direct benefits; soil conservation, snow management, shelter (farm yards and livestock), mitigates airborne contaminants and odours.

Indirect benefits; water quality and ground water recharge, carbon sequestration, food/fuel/timber, visual barrier (privacy), wildlife/beneficial insect habitat.

Goal setting and site assessment;

1. What are we sheltering and how well?
2. How much space for the shelterbelt do we have?
 - A. 5-row are 80' wide full grown.
 - B. 3-row are 50' wide full grown.
3. Prevailing winds, which direction during what time of year?
4. Soil texture, compaction, salinity and moisture?
5. Light? Present (open or beside existing trees/buildings) and future (after fast/tall trees are full grown)?
6. Obstacles? Deep/wide roots stay away from buildings, don't plant under or over utilities!
7. Threats to seedling survival?
 - A. vegetation competition
 - B. Browse/trampling from livestock potentially wildlife?
 - C. Drought/flooding.

Design;

1. Start drawing☺ use GIS images (google map, etc.)
2. Orient perpendicular to winds.
3. 2 legs are better than one (not just an I shape, make L shape whenever possible).
4. Make it long and continuous.
5. Density; 40-60% in row, as many rows as possible 3-5 or more, vary species.

6. Make a "ramp, not a wall" windward side should start with Shrubs then short growth deciduous, then tall deciduous (conifers in 3-row shelterbelt), then conifers x 2 (in 5-row Shelterbelt)
7. Snow management; most snow dumps within distance from shelterbelt that is 2x the Height. 8. Ensure longevity; plant short and long lived species, leave enough space between and in row, diversify!

We did a quick look at our plans for shelterbelts on our land. Luke walked around and gave pointers and ideas to help out. Then ran through a demonstration of an actual plan on a farm yard and surrounding quarter.

Site preparation is key; reduces competition for light, nutrients, water from current vegetation, alleviates soil compaction.

Fall work; Stake out rows, deep rip(?) till clumps are gone, glyphosate can assist with lumps.

Spring work; till a couple more times (lots apparently), seed non aggressive ground cover (native grass, sheep fescue?, legumes?), Plant Seedlings, then apply plastic mulch, (I was surprised that you plant first then mulch) there are a few organic mulches such as paper, straw, pulp mats, grass clippings.

Handling seedlings properly is very important. Only bring out the box you will plant now, leave the box for planting in an hour in the shade, rent a planter if possible, buy a planting shovel if necessary (foot pack to reduce air pockets), try to plant before it rains or water right after.

Weed control especially in the first 3 years, mow, till(only first 3 years), spot spray.

Fill in gaps, cuts down on weeds and make wind break effective.

Eco-buffers

Even more diverse, trees, shrubs, forbs especially native. Plant to mimic nature, smaller in row spacing, rows closer together, connect, (whenever possible) with native area. Plastic mulch doesn't work well as we want suckering, light till between rows first 1-2 years stimulates suckers.

Advantages

Less long term weed control 1-2 years max. No need to replace "holes" naturally regrows, due to suckering, 500 plant at seeding-eco-buffer can have 5000-plants after 5-years.

Additional/improved eco-buffer services, water quality enhancement, ground water recharge, wildlife/pollinator habitat, nutrient cycling (due to diversity), timber/fuel/food, pest suppressing insect habitat.

Shelterbelts and eco-buffers have evolved over a century of research and trial, both require thorough site assessment, thoughtful placement, tough site preparation and timely maintenance (at least in the first 1-5 years)

My note; Shelterbelts are for long distance, simple, cost effective wind protection. Eco-buffers are best. Use whenever possible (financially), they require more planting work but less maintenance (1-2 years), and offer more diverse benefits.

Buying and Renting Farmland

Lance Stockbrugger CA

By: MacKay Ross

Farmland values are high due to “not making any more”, neighbours buy on emotion, investor see it as a safe haven with decent ROI, lately gross crop receipts have been “high”, and low interest rates.

Rental rates simply hinge on what people are willing to pay. Some renters pay on gross profit from the land, if the farmer does well the landlord does well, shared risk.

Factors a renter needs assess; proximity to “home”, distance from land to storage (unless bags are used), quality (soil/drainage/obstructions/access), nothing better than a “retired farmer landlord” who will help out whether with labour or simply providing rides when needed. Additional costs, Legal fees for agreement, liability insurance (your current policy may cover it, double check), you must pay GST on rent (either to landlord or direct to CRA).

Crop Receipts vs. Rental Rates

	Yield	High \$	Med \$	Low \$		Yield	High \$	Med \$	Low \$
Wheat		7.00	6.00	5.00	Canola		12.00	10.50	9.50
Low	35	245	210	175	Low	30	360	315	285
High	50	350	300	250	High	40	480	420	380
Avg	40				Avg	35			
Cost per unit		242	242	242			296	296	296
Break Even Rental/ac									
Low		\$3	\$(32)	\$(67)			\$64	\$19	\$(11)
High		\$108	\$58	\$8			\$184	\$124	\$84

Source: Saskatchewan Ministry of Agriculture

Lance D Stockbrugger, CA

Can a farmer actually afford the rent? This chart shows the highs and lows. Net income per acer is half what it was in 2010.

Will rent stay where it is? Gross farm receipts are down, how long will grain prices stay down, low interest rates promote buying when possible but how soon will they go up?

Rental agreements need to include; write "everything" down (even if not a "legal" agreement, people forget/misinterpret), minimum 3 years, longer is better, ask for "First right of refusal" on purchasing (eliminates auction prices and costs to owner), renewal option (at the end of the 2nd last year minimum), long established rental, yearly renewal for the next 3 or more years, have a clause dealing with death of the landlord (rent splits between offspring, charity, write something down!).

Landlord relationships; stewardship values vary (find out what they are before renting if possible, some want soil conservation/growth, others want "clean" fields that may be cost prohibitive), landlord's reputation (accept that there are people who can't enter into an agreement together, the prospective landlord may be your best friend, that doesn't ensure success), communicate regularly with landlords (adjust to suit landlord within reason), Pay on Time (communicate ASAP if there could be an issue), gifts and gatherings go a long way, retired farmer want to be involved (whether that's operating equipment or simply giving rides), participate in landlord's investment prospective (let them know when you have bad, break even, bumper years, insure rental shows landlord ROI yet is realistic for renter).

Buying land; purchase payments will tend to be higher than rent (annually), annual property taxes, legal fees (one time), loan documentation fees (one time), yard maintenance/rent (potentially), liability insurance (?), land transfer fees (one time), risk of interest rates increasing.

Benefits of buying; eventually it will be paid for (rent is forever, however from what I can tell, one can rent for 50 years = to a 25 year mortgage), ability to add value (dugouts, fencing, etc.).

Purchasing; 25% down (equity or cash), amortization up to 25 years, "Cashflow Optimizer" pay interest only (30% of loan portfolio max), [my note, this is renting from the bank, what's the benefit to the farmer?], "Transition Loan" benefits vendor and purchaser, "Flexi Loan" allows a principle "holiday" once every 5 years (great for offsetting disasters, if you need it more than every 5 years, change what you are doing).

Allocate purchase price at negotiation, all buildings, storage etc. needs to be separated, highest value to depreciable assets, purchasers "tax" interests will be the opposite of vendors.

Title search; easement/leases, multiple names (be careful!), mineral rights, name on title not necessarily the owner, value on title (not likely the ACB [adjusted cost base])

Incorporating farmland; avoid at all costs, future rental income taxed at >50%, no capital gains exemption for corporations (\$1 million per person for private owners), land can't be transferred to specific heirs.

Recap; Know your cost of production to determine affordable rent, low interest rates have kept land cost and rent up, make sure your farmland qualifies for tax, GST implications on purchase or rental.

Do what's right for you and your farm.

Learnings from In Service Training attended by Greg Coon Dec 5-8, 2016

Monday Dec 5, 2016

-Attended the "Fieldman Orientation" session featuring Doug Macauley as speaker. This session is a requirement for new fieldmen in order to become certified. The session covered the history of the Agricultural Service Board Act and Agricultural Fieldmen in Alberta. It then went on to give a good overview of the key task areas and legislation that a fieldman is tasked with enacting and enforcing. This session was a very good starting point for a new ag fieldman.

- Attended "Policy and Resolution Writing 101" with Doug Macauley. He covered the 3 steps of good resolution writing as well as some good general writing tips. I have worked mainly in the private sector, so resolution writing wasn't something I have done. This course was helpful.

Tuesday Dec 6, 2016

-Attended "Effective Communication Skills For Supervisors" with Paula Goebel. She covered a wide range of skills and tips for effective communication that can be applied in all business as well as personal communication.

-Attended "Health Safety and Wellness; Latest Ideas from an Emergency Physician" with Dr. Louie Francescutti. Dr. Francescutti is a fantastic speaker. He covered a wide range of subjects around personal well-being and how important health and wellness is to your work and personal life. Plenty of humor and thought provoking questions kept the audience fully engaged.

-Attended "Biobeds for Pesticide Waste Disposal" with Tom Wolf. This presentation gave an overview of how to build a biobed from organic materials in a mulch to use for an environmentally sound method of disposing of leftover pesticide. He showed quite a number of different ways of building them as well as test results showing the effectiveness of biobeds that are in use today. I see value in bringing more information on biobeds back to our producers and perhaps have PCBFA facilitate a seminar on this.

-Attended "Introduction To Alberta Emergency Management" with John Lamb from Alberta Emergency Management Agency. He gave an overview of what AEMA does in regards to disasters and emergency events. The province is divided up into 7 different regions with each region having their own field officer. In the event of a disaster such as the Ft MacMurray wildfires, these officers act as liaisons' with all of the emergency services available in the province and can activate this help when needed.

-Attended "Application Technology" with Tom Wolf. Tom is a sprayer Specialist. He spoke about how to use nozzle types, different pressures and travel speeds to provide effective herbicide application. He did a very good demonstration on plant coverage and also a demo on pulse width modulation.

Attended "So You Want To Be A Weed Specialist" with Nicole Kimmel. Nicole is a weed specialist with Alberta Agriculture and Forestry. She gave a presentation on a Flowering Rush infestation in Lake Isle that she had to deal with and all of the extra steps and hurdles there was to deal with spraying a herbicide in a water body. A very interesting presentation.

Wednesday Dec 7, 2016

-Attended "Rural/Urban Relationships" with Kelly Cooley. Kelly gave a presentation about ASBs being in the best position to partner with urban jurisdictions to manage invasive species in the urban areas that border their respective municipalities. He used the County of Newell as a case study, which showed very positive results for both the urban and rural jurisdictions.

-Attended "Prairie Solar Opportunities" with Rob Harlan from the Solar Energy Society of Alberta. Rob gave a presentation that showed the science and economics of solar power and how it is becoming more economically feasible for producers. He included a great deal of facts and figures to back up his presentation.

-Attended "Starland County Solar Initiative" with Al Hampton. Al is an ag fieldman and farmer in Starland County. Al's municipality started with a solar initiative by powering some of their pumping stations with solar power. This garnered interest from producers in the area and the county provided information on setup, purchasing, and government funding available to producers. This prompted Al to set up a 10KW system on his farm and to this point, he is very pleased with the performance and economic feasibility of the system. I think promoting a solar workshop in our county would be beneficial to our ratepayers.

-Attended "Flowering Rush Project" with Cody McIntosh from Red Deer County. This was a similar presentation to Nicole Kimmel's presentation only this was more results oriented from the county's perspective. This weed is very difficult to control or eradicate. The County has had a tough time dealing with all the legislation involved but have persevered and have made good gains in controlling the infestation.

-Attended "Strategies to Control the Hazards of Grain Handling and Storage" with Glen Blahey from CASA. Glen presented some hazards associated with grain storage and some ways of eliminating these hazards. Many accidents and deaths result from improper handling and storage of grain in the country. These can be avoided with proper handling and storage techniques. CASA has a grain safety demonstration trailer, as well as other grain safety demonstrations that are available. I obtained Glens contact information after his presentation so that the County could investigate having CASA bring their grain safety trailer or one of their other demonstrations to our trade Show.

-Attended "Freemen Of The Land" with Christopher Perry. This presentation gave insight into the radical group that call themselves "Freemen on the Land" or "Sovereign Citizens" This group believes

that they are bound by statute law only if they consent to those laws. They often rent from property owners and then within a short time refuse to pay rent and refuse to leave the land, even going as far as somehow putting a lien against the land. This is good information to pass on to our weed inspectors to be aware that these types of people are out there and to use caution and follow the working alone procedures.

- Attended "Young Cattlemen in Alberta" with Emily Ritchie from the Canadian Cattleman's Association. Emily gave an overview of the young cattleman programs in Canada and some of the opportunities for young people in or interested in the cattle industry.

Thursday Dec 8, 2016

- Attended "Adapting To Climate Change" with Dave Sauchyn. This presentation dealt with historical data to show how much the climate has changed in the past thousand years. The content was very scientific in nature and I found it a bit hard to follow.
- Attended "Room For Every Farmer-A Global Perspective of Agriculture" with Brenda Schoepp. Brenda shared a lot of stories about her experiences in different parts of the world and how agriculture is viewed so much differently in other countries than it is viewed here. She gave examples of how having a small garden is considered agriculture in some countries and how this open minded way of thinking can be beneficial to agriculture in Canada.
- Attended "Cover Crops to Profit Above Ground and Create Wealth Below" with Grant Lastiwka. Grant presented information around how a good mix of cover crop cocktails can extend growing seasons as well as adding root matter and capturing nitrogen to benefit soil quality. He took us from the idea that "soil grows plants" to the idea that "plants grow soil" The longer period of time that green leaf plants are on the soil, the more carbon is captured, in turn creating diverse root systems which creates healthier soils.
- Attended "Buzz on Bees" with Maryam Sultan. Maryam's presentation provided very interesting information on bees and the biology of their hives. She elaborated on bee health as well as hive health issues, as well as some of the research being done at the Bayer Bee Care Center. She is a good speaker. She was well prepared and very informative.
- Attended "The Challenges of a Disabled Man Growing Up in Rural Alberta" with Dausin Kluin. Dausin has Cerebral Palsy but he never let that get in the way of his dreams and aspirations. He became a world class arm wrestler and an inspirational speaker. A great feel good way to conclude the conference.

Clear Hills County

Request For Decision (RFD)

Meeting:	Agricultural Service Board Meeting
Meeting Date:	January 9, 2017
Originated By:	Aaron Zylstra, Agricultural Fieldman
Title:	INFORMATION & CORRESPONDENCE
File No:	63-10-02

DESCRIPTION:

The board is presented with correspondence for review.

BACKGROUND:

Attached are documents for the Board's information:

ATTACHMENTS:

- Fusarium Head Blight – Article – (63-10-02)
- Alberta Plant Health Lab – Article – (63-10-02)
- Save the Date – Brochure – (63-10-02)

RECOMMENDED ACTION:

RESOLUTION by _____ that this Agricultural Service Board receives the information & correspondence of January 9, 2017 as presented.

Initials show support - Reviewed by: Manager: *AB* AgFieldman: *AC*

Fusarium Head Blight (*Fusarium graminearum*)

Fusarium Head Blight Biology

Fusarium head blight (FHB) is a fungal disease complex caused by several Fusarium species, including *Fusarium graminearum*, *F. culmorum*, *F. avenaceum*, and *F. pseudograminearum*. The most important cause of FHB is *F. graminearum*, which can cause losses in grain yield and quality and produce mycotoxins that negatively affect livestock feed, the baking and milling quality of wheat, and the malting and brewing qualities of malt barley. *F. graminearum*-infected seed often reduces levels of germination and seedling vigour.

FHB can occur on a wide range of cereal crop species. All small grain cereal crops, including wheat and barley, corn, and wild and tame grasses are susceptible to the Fusarium pathogen.



Buildup of the pathogen would typically be favoured in fields where cereal crops are grown more than once every 3-4 years, and by favourable weather.

The pathogen typically overwinters in crop and grass residues, on or in the soil, as well as in seed. As a result, emerging seedlings are at risk of root and crown infections. Fruiting structures on old infested crop residue produce wind-borne spores, which are spread within fields, and into adjacent fields, and can infect florets at the flowering stage. A fungal infection at this stage results in the death of the floret and kernels are not formed. Subsequent floret infection produces kernels that have a bleached, shriveled appearance, called tombstone kernels. Infection of developing grain as the crop progresses from the late milk to early dough stage can result in kernels that appear healthy, but are superficially infected with *F. graminearum* and are contaminated with mycotoxin. Warm, moist weather worsens the risk of infection. A second rain-splashed spore stage can form on infected head tissue as well, allowing the disease to spread within a field.

Fusarium Head Blight

Symptoms in the field may include premature bleaching or blighting of heads, or individual spikelets on the head. Partially blighted heads are the most common sign of FHB, where heads do not fill properly and appear shriveled and bleached, and florets may have a pinkish or orange colouration near their base.

FHB Management

How can I reduce the risk of FHB on my farm?

- Avoid planting seed infected with *F. graminearum*
- A longer crop rotation, away from cereals to non-hosts, including canola, pulses and forage legumes should be considered for at least two years, to slow the buildup of infested crop residues and to allow the fungus to decompose.
- Corn is an excellent host for *Fg*. Avoid corn in short rotation with other small grain cereals.
- Selecting less susceptible varieties will help to reduce the risk of Fusarium head blight and perhaps the potential for buildup of *F. graminearum*.
- If possible, irrigation should be avoided during the flowering period to help prevent humid conditions that favour infection. Also, consider increasing seeding rates, to reduce tiller formation and shorten the flowering period for the entire crop, thus reducing the time that irrigation should be avoided.
- In-crop fungicide application may be considered, but only provides disease suppression. Application timing of fungicide is critical and the focus should be on getting fungicide directly onto all head tissue in the field around the start of anthesis. Recent research out of the USA

suggests that fungicide application can be effective for up to 4-6 days post anthesis. Keep your optimum spray timing for each crop in mind!

The short distance spread of FHB is facilitated by windborne spores moving from one cereal field to the next. Long distance spread occurs through the transportation of infected crop residue, grain or seed.



For more information,

Visit agriculture.alberta.ca/fusarium

or call the Ag-Info Centre at

310-FARM (3276)

Alberta Plant Health Lab

The Pest Surveillance Section of Alberta Agriculture and Forestry is opening the new Alberta Plant Health Lab (APHL).

The APHL is located at the Crop Diversification Centre North (Edmonton, Alberta), led by Dr. Jie Feng. The lab provides plant pest diagnosis and expertise to the agricultural industry and will support stakeholders in compliance with the *Alberta Agricultural Pest Act*.

The lab is open at a limited capacity and is currently accepting priority samples.



APHL Vision

Engage Alberta's crop industry in leading edge diagnostics and surveillance of plant health risks.

Services

The new lab provides accurate diagnosis of both existing and new plant pests to provide regulatory support to target groups.

- Blackleg
- Monitoring emerging clubroot pathotypes
- Fusarium head blight in cereals
- Ear rot in corn
- Dutch elm disease
- Bacteria, fungi and viruses
- Noxious and prohibited noxious weeds
- Agricultural insects
- Other diagnostic services

Who can submit samples?

Diagnostic testing is free-of-charge for:

- Alberta Agriculture and Forestry
- Academic Institutions
- Agricultural Fieldmen
- Applied Research Associations
- Municipal Pest Management

www.agric.gov.ab.ca

June 2018

Alberta
Government

Alberta Plant Health Lab

What the lab will accept

Diagnostic services can be conducted on:

- Plant tissue
- Weed specimens
- Insect specimens
- Soil samples (100 – 500g) *

**currently not including clubroot soil testing*



The lab, and the services we provide, will adapt to meet the needs of our clients, using the most current technologies and information.

APHL Values

We value safe, proactive and effective pest management as legislated in the *Alberta Agricultural Pests Act*.

Contact Us



Alberta Plant Health Lab
Crop Diversification Centre North
17507 Fort Road NW
Edmonton Alberta T5Y 6H3

780-638-3999

planthealthlab@gov.ab.ca

Alberta
Government

YELLOWHEAD
Visit our website
for a full list of
tour details
www.2017asptour.ca



SAVETHE
DATE
July 11th-14th
2017

BATTLE RIVER—CROWFOOT

TOUR DATES July 11th-14th 2017

Showcasing our **local**
producers in **ACTION**
and their contributions
to **the FUTURE** of agriculture

Olds College has been selected as the base for the tour week and will be the venue location for registration, check-in, optional tours and all of the evening festivities.

Check out our website for further info regarding selected locations and registration for the Delegate Tour, Partner Tour and the Youth Tour.

www.2017asbtour.ca

Alberta Agricultural Service Board
2017 Summer Tour



Mountain View
C O U N T Y

Red Deer County



Check out our website
for more details on the
2017 ASB Summer Tour
www.2017asbtour.ca



SAVE THE DATE

July 11th - 14th, 2017

Mountain View County & Red Deer County
Agricultural Service Boards Present:



