

CLEARLY AN  
AREA OF  
OPPORTUNITY

# Clear Hills County

VOLUME 16, ISSUE 1

JANUARY 2018

INSIDE  
THIS ISSUE:

Council Minutes	2
Aspen Dieback	11
Wild Boar Farms	13
Foreign Ownership	16
Safety Winter Burning	17
Scholarship	18
AFSC News	19
Trade Show	20
Understanding your Land Title	21
Media Release	24
Black Henbane	26
Worsley Health Centre Calendar	27
Farm Safety	28
Community Bulletin Board	29
Community Contacts	30
Community Calendar	31
County Info	32



***Clear Hills County***

***Agricultural Trade Show***

***Saturday, April 14, 2018***

***Dave Shaw Memorial Complex***

***Hines Creek, Alberta***

***Exhibitor and Sponsorship packages available!***

**MINUTES OF CLEAR HILLS COUNTY  
REGULAR COUNCIL MEETING  
COUNTY COUNCIL CHAMBERS  
TUESDAY, NOVEMBER 28, 2017**

99PRESENT	Jason Ruecker Dan Fletcher Amber Bean Miron Croy Peter Frixel David Janzen Raymond Wetmore	Reeve Deputy Reeve Councillor Councillor Councillor Councillor Councillor
ATTENDING	Allan Rowe Lori Jobson Audrey Bjorklund Ron Jensen Bonnie Morgan	Chief Administrative Officer (CAO) Corporate Services Manager (CSM) Community Development Manager (CDM) Public Works Manager (PWM) Executive Assistant (EA)
ABSENT		
CALL TO ORDER	Reeve called the meeting to order at 9:30 a.m.	
<u>ACCEPTANCE OF AGENDA</u> C581-17(11/28/17)	RESOLUTION by Councillor Croy to adopt the agenda governing November 28, 2017, Regular Council Meeting. <b>CARRIED.</b>	
<u>APPROVAL OF MINUTES</u> Previous Meeting Minutes C582-17(11/28/17)	RESOLUTION by Councillor Bean to adopt the minutes of the October 24, 2017, Organizational Council Meeting, as presented. <b>CARRIED.</b>	
C583-17(11/28/17)	RESOLUTION by Councillor Janzen to adopt the minutes of the October 24, 2017, Regular Council Meeting, as presented. <b>CARRIED.</b>	
<u>NEW BUSINESS: COUNCIL</u> Management Team Activity Report C584-17(11/28/17)	Council reviewed the most recent Management Team Activity Report. RESOLUTION by Deputy Reeve Fletcher to accept the October 24, 2017, Management Team Activity Report, as presented. <b>CARRIED.</b>	
Code of Conduct Bylaw	Council is presented with the draft Councillor Code of Conduct Bylaw 228-17 for review and first reading.	

Page 2 of 9  
 REGULAR COUNCIL MEETING  
 TUESDAY, NOVEMBER 28, 2017

**C585-17(11/28/17)** RESOLUTION by Councillor Frixel to table the draft Bylaw No. 228-17, a Bylaw of Clear Hills County, in the Province of Alberta, for the purpose of governing the conduct of Clear Hills County Councillors and bring back to the January 25, 2018, Policy and Priority Meeting. **CARRIED.**

TENDER OPENING

Tender 2017-09  
 Enclosed Trailer

Council is presented with tender 2017-09 Enclosed Cargo Trailer, to open, analyze and bring back results later in the meeting.

**C586-17(11/28/17)** RESOLUTION by Councillor Croy to open, analyze 2017-09 Enclosed Cargo Trailer and bring back results later in the meeting. **CARRIED.**

Company	Amount
CanWest Trailers Inc.	\$14,400.00 Excluding GST

Village of Hines Creek  
 Funding Request

The Village of Hines Creek is requesting funding support from Clear Hills County in 2018 as follows: \$500,000.00 for operating costs and \$500,000 for a paving project for a total of \$1,000,000.00 (one million dollars).

**C587-17(11/28/17)** RESOLUTION by Councillor Frixel to invite the Village of Hines Creek Council to the December 12, 2017 Regular Council meeting to have further discussion regarding their request for funding support. **CARRIED.**

Reeve Ruecker recessed the meeting at 10:03 a.m.  
 Reeve Ruecker reconvened the meeting at 10:10 a.m.

DELEGATIONS

Friends of Autumn  
 Lodge

Friends of Autumn Lodge will be in attendance to discuss the closure of Autumn Lodge, in Berwyn, Alberta.

TELUS

TELUS, Brian Bettis, General Manager for Alberta North and Customer Solutions Delivery will be in attendance to discuss the poor cellular service in Clear Hills County.

Reeve Ruecker recessed the meeting at 11:17 a.m.  
 Reeve Ruecker reconvened the meeting at 11:25 a.m.

Reeve Ruecker recessed the meeting for the public hearing at 11:26 a.m.  
 Reeve Ruecker reconvened the meeting at 11:28 a.m.

Reeve Ruecker recessed the meeting at 11:40 a.m.  
 Reeve Ruecker reconvened the meeting at 12:12 p.m.



Page 3 of 9  
 REGULAR COUNCIL MEETING  
 TUESDAY, NOVEMBER 28, 2017

Cleardale Agriculture Society

Delegates from the Cleardale Agricultural Society will be in attendance at 11:29 a.m. to present a project proposal that they are seeking funding assistance with.

Pest and Predation Control, Hunting Incentives

Councillor Frixel has requested that the Hunting Incentive programs that the County has in place for wolves, coyotes and beavers be include on today's agenda for review as a result of feedback from ratepayers across the County.

Trappers association was present in the audience, Reeve Ruecker opened the floor for discussion on behalf of the program.

C588-17(11/28/17)

**RESOLUTION** by Councillor Frixel to table the discussion regarding the Hunting Incentive programs that the County has in place for wolves, coyotes and beavers, and invite the Local Alberta Trappers Association to attend the January 25, 2018 Policy and Priority Meeting. **CARRIED.**

NWSAR Request

Councillor Croy requested a discussion regarding North West Species at Risk.

C589-17(11/28/17)

**RESOLUTION** by Councillor Bean to approve a Grant to the North-West Species at Risk Committee of \$50,000.00 (fifty thousand dollars) to assist with the operational aspects of this committee, funds to be allocated from the Rate Stabilization Reserve. **CARRIED.**

Social Media

Council requested a discussion regarding developing and administering Facebook/twitter pages for Clear Hills County, keeping up to date with Social Media.

C590-17(11/28/17)

**RESOLUTION** by Deputy Reeve Fletcher to receive the discussion regarding social media for information. **CARRIED.**

Reeves & Mayors AAMDC Meeting

Reeve Ruecker requested a discussion regarding the Mayors & Reeves Liaison Committee meeting he attended November 14, 2017 during the AAMDC Convention.

C591-17(11/28/17)

**RESOLUTION** by Councillor Janzen to draft a letter to the Honourable Minister of Justice Minister Ganley and Federal Minister of Justice, Jody Wilson-Raybould, on concerns of rural crime and the lack of sentencing enforcement. **CARRIED.**

Catering Tender

The agreement for catering lunches for County meetings will expire on December 31, 2017. Currently the catering contract is held by Worsley Gateway Inn Ltd.

Page 4 of 9

REGULAR COUNCIL MEETING  
TUESDAY, NOVEMBER 28, 2017

- C592-17(11/28/17) RESOLUTION by Councillor Croy that Council directs Administration to proceed to tender the catering services for a one year term with option of extension for Clear Hills County Council meetings, Agricultural Service Board meetings, and other committee meetings. CARRIED.
- FCM Conference & Trade Show Council is presented with information regarding the 2018 Annual Conference and Trade Show in Halifax May 31-June 3, 2018. Administration will need to know by December 1st who will be attending to allow for arrange all necessary travel arrangements.
- C593-17(11/28/17) RESOLUTION by Councillor Frixel that Councillor Bean, Councillor Croy and Councillor Frixel and Reeve Ruecker will be attending the 2018 FCM Annual Conference and Trade Show in Halifax May 31-June 3, 2018. CARRIED.
- Councillor Payroll Schedule Councillor Bean requested a discussion regarding the Councillor Payroll Schedule be added to todays meeting.
- C594-17(11/28/17) RESOLUTION by Councillor Bean to receive the discussion regarding Councillor Payroll Schedule for information. CARRIED.
- Councillor Facility Tour Reeve Ruecker requested a discussion regarding the Facility Tour that Council did on November 7, 2017.
- C595-17(11/28/17) RESOLUTION by Councillor Croy to receive the discussion regarding the Facility Tour for information. CARRIED.
- C596-17(11/28/17) RESOLUTION by Councillor Croy to receive the delegation from the Friends of Autumn Lodge for information, and draft a letter to the Honourable Minister Lori Sigurdson, regarding the care and housing of seniors in rural Alberta. CARRIED.
- C597-17(11/28/17) RESOLUTION by Reeve Ruecker to receive the delegation from the TELUS, Brian Bettis, General Manager for Alberta North and Customer Solutions Delivery for information, and draft a letter to have TELUS present a plan to cover all of the residential portion of Clear Hills County with cellular signal coverage. CARRIED.
- C598-17(11/28/17) RESOLUTION by Deputy Reeve Fletcher that Council accept the delegation from the Cleardale Agricultural Society for information and approve a general grant of \$2,000.00 for the Cemetery Signage project and include the funds in the 2018 Operating Budget. CARRIED.

CORPORATE  
SERVICESAccounts Payable  
(October 25, 2017,  
to

Page 5 of 9  
 REGULAR COUNCIL MEETING  
 TUESDAY, NOVEMBER 28, 2017

November 28, 2017) A list of expenditures for Clear Hills County for the period of October 25, 2017, to November 28, 2017, is provided for Council's review.

C599-17(11/28/17) RESOLUTION by Deputy Reeve Fletcher that Council receives for information the Accounts Payable report for Clear Hills County for the period of October 25, 2017 to November 28, 2017 for a total of \$896,302.66. CARRIED.

2018 Interim Operating Budget Council is presented with the 2018 Interim Operating Budget for review and approval.

C600-17(11/28/17) RESOLUTION by Councillor Frixel to adopt the 2018 Interim Operating Budget effective January 1, 2018 as presented. CARRIED.  
 Reeve Ruecker recessed the meeting at 2:38 p.m.  
 Reeve Ruecker reconvened the meeting at 2:45 p.m.

C601-17(11/28/17) RESOLUTION by Councillor Wetmore to proceed to tender for the Clear Hills County road side mowing program for the 2018 season. CARRIED.

Multi Year Capital Plan Council is being provided with a copy of the Multi Year Capital Plan.

C602-17(11/28/17) RESOLUTION by Councillor Croy to move the \$4,500,000 for Secondary Highway 735 (50/50 cost share with the Province) from 2019 to 2021 in the Multi Year Capital Plan. CARRIED.

C603-17(11/28/17) RESOLUTION by Reeve Ruecker to add \$500,000 to 2020 for the paving of Worsley, Springwood Drive in the Multi Year Capital Plan. CARRIED.

C604-17(11/28/17) RESOLUTION by Deputy Reeve Fletcher to remove the \$150,000.00 in for a tractor 2018 and the \$37,500.00 for the mower in 2018 from the Multi Year Capital Plan. CARRIED.

C605-17(11/28/17) RESOLUTION by Councillor Janzen to approve the Multi Year Capital Plan as revised. CARRIED.

COMMUNITY SERVICES  
 Bylaws Closing  
 Abandoned Road Plans 2018EU  
 1170EU

Council direction is required regarding two road closures for abandoned, unused road plans that were initiated by request from the affected landowners in September 2016. To proceed with the closures Alberta Land Titles requires that the area within the road plans to be closed be valued (appraised). Cost estimate for an appraisal on the two properties is up to \$800.00 for each parcel.



Page 6 of 9 REGULAR COUNCIL MEETING TUESDAY, NOVEMBER 28, 2017	
C606-17(11/28/17)	<b>RESOLUTION by Reeve Ruecker to have the land owner cover the cost of the appraisal prior to proceeding with the road closures road plans 2018eu and 1170eu. CARRIED.</b>
Bylaw 227-17 Amending Road Closure Bylaw	Council direction is required regarding two road closures for Council is presented with Bylaw No. 227-17 to repeal 219-17 and 223-17 and to amend Bylaw 210-16. Land Titles has returned the Bylaw 223-17 because they require reference to plan 152141 be removed from the Bylaw as it is not relevant to the closure.
C607-17(11/28/17)	<b>RESOLUTION by Deputy Reeve Fletcher to table the Bylaw No. 227-17 to repeal 219-17 and 223-17 and to amend Bylaw 210-16. CARRIED.</b>
Rural Addressing	The Public Hearing for Rural Addressing Bylaw 226-17 was held earlier today. The bylaw is now presented for Council to consider whether to give further readings and adopt the bylaw or not. This version of the bylaw expands the locations that rural addressing will be installed at to include recreational sites and community halls.
C608-17(11/28/17)	<b>RESOLUTION by Councillor Janzen that Council give second reading to Bylaw 226-17 to provide for rural addressing in Clear Hills County. CARRIED.</b>
C609-17(11/28/17)	<b>RESOLUTION by Councillor Croy that Council give third and final reading to Bylaw 226-17 to provide for rural addressing in Clear Hills County. CARRIED.</b>
North Peace Stampede Ass. Funding Request	Council is presented with the North Peace Stampede Association request for funding to assist with replace the roof on the grandstands at the rodeo grounds. The Association is seeking to raise \$239,692.75 for this project.
C610-17(11/28/17)	<b>RESOLUTION by Councillor Bean to accept for information that the North Peace Stampede Association is fund raising for a new roof on the grand stands at the rodeo grounds. CARRIED.</b>
2017 items for Disposal	Council is presented with a list of obsolete, broken and surplus computer and business machines for disposal.
C611-17(11/28/17)	<b>RESOLUTION by Councillor Croy to authorize the disposal of obsolete, broken and surplus computers and business machines as recommended in the 2017 Surplus Items for Disposal report. CARRIED.</b>
ASB Recommendations	Council is presented with a list of obsolete, broken and surplus computer and business machines for disposal.

Page 7 of 9  
REGULAR COUNCIL MEETING  
TUESDAY, NOVEMBER 28, 2017

C612-17(11/28/17) RESOLUTION by Reeve Ruecker that Council direct administration to bring a revised Schedule of Fees Bylaw to the next Council meeting with the rental rate on the following items reduced to "no charge" for agricultural and community group renters, Chemical Wipe Applicators, Eco bran applicator, Truck Mount Sprayer, and Mulch applicator. CARRIED.

PUBLIC WORKS  
RDS 110077 Clear  
Hills County  
Connector Road

Council is presented with a request from Alberta Environment and Parks regarding a Provisional Roadway Application for RDS 110077 Clear Hills County Connector Phase II.

C613-17(11/28/17) RESOLUTION by Deputy Reeve Fletcher to not renew Provisional Roadway Application for RDS 110077 Clear Hills County Connector Phase II. CARRIED.

Log Haul Route  
Manning Forest  
Products

Council is presented with correspondence from Manning Forest Products requesting approval to use local roads for log haul routes within Clear Hills County.

C614-17(11/28/17) RESOLUTION by Councillor Croy to accept the log haul route as presented from Manning Forest Products requesting approval to use local roads for log haul routes within Clear Hills County. CARRIED.

Tender Award-  
2017-09 Enclosed  
Trailer

Tenders were opened for Tender 2017-09 Enclosed Cargo Trailer on Tuesday November 28, 2017 at 9:45 a.m. Council is presented with an analysis of the results.

C615-17(11/28/17) RESOLUTION by Councillor Bean to reject all tenders received for Tender 2017-09 Enclosed Cargo Trailer due to budget constraints. CARRIED.

WRITTEN REPORTS  
COUNCIL,  
COMMITTEE &  
MANAGERS

Councillor Reports Councillors submit written or verbal reports for meetings attended.

C616-17(11/28/17) RESOLUTION by Councillor Janzen to receive the Councillor reports on November 28, 2017, for information, as presented. CARRIED.

Chief Administrative



Page 8 of 9  
 REGULAR COUNCIL MEETING  
 TUESDAY, NOVEMBER 28, 2017

Officer's Report

The Chief Administrative Officer's report was reviewed.

C617-17(11/28/17)

**RESOLUTION** by Councillor Croy to receive the Chief Administrative Officer report on November 28, 2017, for information, as presented. **CARRIED.**

Community Development Manager's Report

The Community Development Manager's report was reviewed.

C618-17(11/28/17)

**RESOLUTION** by Deputy Reeve Fletcher to receive the Community Development Manager's report on November 28, 2017, for information, as presented. **CARRIED.**

Corporate Services Manager's Report

The Corporate Service Manager's report was reviewed.

C619-17(11/28/17)

**RESOLUTION** by Councillor Bean to receive the information provided in the Corporate Service Manager's report on November 28, 2017, for information, as presented. **CARRIED.**

Public Works Manager's Report

The Public Works Manager's report was reviewed.

C620-17(11/28/17)

**RESOLUTION** by Councillor Wetmore to receive the information provided in the Public Works Manager's report on November 28, 2017, for information, as presented. **CARRIED.**

COUNCIL INFORMATION

Council was presented with the correspondence of pertinent information that has been received.

C621-17(11/28/17)

**RESOLUTION** by Councillor Croy to receive for information the correspondence presented at the November 28, 2017, Regular Council Meeting, as presented. **CARRIED.**

CALENDARS

Council and Administration reviewed the upcoming months' calendars for Councillor Boards and Committee scheduled meetings, to assist Administration with record keeping and Council with a reminder.

C622-17(11/28/17)

**RESOLUTION** by Councillor Bean to receive for information the November, December 2017 and January 2018 calendars.

Date	Meeting	Councillor
November 10	PREDA	Frixel
December 8	GGA	Frixel
December 13	Emergency Training	All
Dec 7	NWSAR	Croy, Bean
Dec 6	NPH	Bean
Dec 12	FV Seed	Fletcher
Nov 30	NTAC	Wetmore
Dec 15	WDHP	Bean

Page 9 of 9  
 REGULAR COUNCIL MEETING  
 TUESDAY, NOVEMBER 28, 2017

Nov 30	NPH Exec	Bean
		CARRIED.

C623-17(11/28/17)

**RESOLUTION** by Councillor Janzen to approve the attendance of Councillor Bean to attend the ASB Conference, January 16 to 19, 2018. **CARRIED.**

CONFIDENTIAL  
ITEM(S)  
 CONFIDENTIAL  
 ITEM(S)

No confidential items

ADJOURNMENT

Reeve adjourned the November 28, 2017, Regular Council Meeting at 3:56 p.m.

\_\_\_\_\_  
 DATE REEVE

\_\_\_\_\_  
 DATE CHIEF ADMINISTRATIVE OFFICER

## IMPORTANT NOTICE

### PREDATION & PEST BOUNTIES SUSPENDED

Effective January 1, 2018, the Wolf Hunt Incentive, Coyote Hunt Incentive and Beaver Control Bounty will be suspended.

**C653-17(12/12/17) RESOLUTION** by Councillor Wetmore that effective January 1, 2018 the Wolf Hunt Incentive Policy 6307, Coyote Hunt Incentive Policy 6315 and Beaver Control Policy 3234 will be suspended until further review due to suspected abuse of the program. **CARRIED.**

If you have any further questions or require further information, feel free to contact Chief Administrative Office, Allan Rowe at 780-685-3925.





Figure 1.  
Aspen dieback.



Figure 2. Insect-caused defoliation on an aspen stand.

## Introduction

Trembling aspen is the most widespread and abundant tree species in North America. It is also the main native tree in the aspen parkland.

Trembling aspen is important ecologically and commercially. Ecologically, it provides a source of food and habitat for species of wildlife, helps to maintain biodiversity and conserves water. Commercially, it provides wood fibre, improved aesthetics for tourism and recreation, and forage for livestock.

Aspen grows over a wide geographic and climatic range compared to other tree species in Alberta and it is commonly found in the prairies. However, aspen is a water-limited species and it is considered a drought sensitive species. Thus, prolonged, severe droughts can lead to aspen dieback (Figure 1).

Drought is one of the key factors that causes dieback. Drought affects vascular tissues that transport water and nutrients in trees. It also can affect a tree's ability to produce and store food, eventually leading to dieback. Pests and damaging agents that also cause dieback include insect defoliators that reduce carbon uptake and food

synthesis (forest tent caterpillar, large aspen tortrix, Bruce spanworm), wildlife that damage tree stems (elk, moose, bear, porcupine) and weather events that lead to tree freeze events (Chinook winds, spring frosts) also include aspen dieback.

Factors that pre-dispose aspen trees to dieback include genetics (clones), regional climate, topography (aspect, dry sites), forest structure, and stand age. Insects and fungal pathogens are attracted to trees stressed by inciting factors such as drought. Insects, fungal pathogens, cankers, and wind-throw become factors that contribute to aspen dieback.

## Distribution of Aspen Dieback

Aspen dieback is widespread in western USA and in western Canada where it occurs from stand level to a landscape level. This disorder is common across large areas of west-central Alberta. Since mid-1990s there have been reports

of aspen dieback mainly in the southern fringe of aspen parkland of Alberta. Following a severe drought in 2001, an estimated 35 per cent of the aspen in this region have died. Pockets of mature aspen trees showed signs of decline and eventually either parts of trees or whole trees died. Usually, in a given area dieback is more extensive in low lying, south facing slopes, which tend to be the hottest and driest areas as well.

## How to Recognize Aspen Dieback?

Branch dieback, leading to death of aspen trees, is the main characteristics of aspen dieback (Figure 3). This may occur within a relatively short time period (few years) or it may take a long time (decade or more) depending on the site factors.

genetics and other pest damage that can contribute to aspen dieback. Within the forest stand, dieback first appears patchy with pockets of mature trees showing signs of decline and eventual tree death. As dieback continues, entire stands will appear either dead or dying. A few years following branch dieback and tree kill, the forest stand will have many snapped tree stems as decay and wind bring the dead trees down (Figure 4).



Figure 3. Branch dieback at the early stages of aspen dieback.



Figure 4. Aspen trees kill and stand leaning at the late stages of aspen dieback.

## Additional Information

For further information contact your local ESRD office or call toll free at 310-0000 or visit our website at [www.esrd.alberta.ca](http://www.esrd.alberta.ca).

## References

- Brent R. Frey, Victor J. Lefter, E. H. (Ted) Hogg, and Simon M. Landrauser. 2004. Predicting landscape patterns of aspen dieback: mechanisms and knowledge gaps. *Canadian Journal of Forest Research*, 34(7): 1319-1330.
- E. H. (Ted) Hogg and Tisha Hook. 2012. Challenges in assessing drought impacts on boreal aspen and mixedwood stands in western Canada. In *Boreal Mixedwoods 2012: Ecology and Management of Multiple Values*. Edmonton, Alberta, 17-20 June, 2012.
- Michalean M. Hogg, E.H., Hall, R.J., Arsenault, E. 2011. Massive mortality of aspen following severe drought along the southern edge of the Canadian boreal forest. *Global Change Biology*, 17: 2084-2094.
- Photo Credits**
- Figures 1, 2, 3 and 5: Mike Maximchuk, Environment and Sustainable Resource Development (ESRD)
- Figure 4: Mike Michalean, Canadian Forest Service
- Figure 6: Dave Schulz, Wisconsin Department of Natural Resources, USA
- Figure 7 and 8: Tom Hutchinson, ESRD

ISBN No.: 978-1-4801-1316-5 (Print Version)  
978-1-4801-1317-2 (Online Version)  
Printed March 2014





Figure 5. Late spring frost damage on aspen



Figure 6. Hail-damaged aspen stand



Figure 7. Discolouration along the margins of the aspen leaf affected by drought



Figure 8. Drought-affected aspen in Alberta

### Other Disorders Causing Damage Similar to Aspen Dieback

#### Late Spring Frost Damage

When frost occurs after new foliage has developed in late spring, most of the young, succulent new foliage dies leaving clumps of the hardened old foliage (Figure 5). This may appear like early stages of aspen dieback but the affected trees will recover.

#### Hail Damage

Hail damage causes mechanical injury to aspen trees resulting in branch kill. Hail damage injures to stems are unidirectional depending on the direction of the hail storm. With aspen dieback, no mechanical injuries to tree stems are found.

#### Drought

Drought-affected aspen trees have leaves with discoloration along the margins (Figure 7). Drought-affected trees recover unless drought is severe or prevails for many consecutive years. Under these conditions drought can lead to aspen dieback.



### Impact of Aspen Dieback

- **Biodiversity:** Aspen tree kill due to dieback affects biodiversity by impacting wildlife communities supported by aspen stands.
- **Aesthetics and Tourism:** In the fall, aspen foliage changes colour providing colourful yellow landscapes that attract tourists. Aspen dieback makes these areas unattractive to tourists.
- **Wildlife and Livestock:** Aspen dieback denies a source of food and habitat for wildlife. Livestock that feed on aspen foliage are also affected by aspen dieback.
- **Water conservation:** Aspen stands help to conserve water by providing shade to the landscape. Dieback will remove this cover exposing soil to erosion and direct sun that accelerates evaporation of moisture from soil.
- **Wood fibre:** Large-scale tree kill and dieback will affect wood fibre supply unless the dead trees are salvaged before quality of wood fibre deteriorates.

### Management of Aspen Dieback

Management of aspen dieback is feasible with backyard trees. Ensure that trees are watered deep along the drip lines during drought periods and in the fall before the ground freezes. For watering, use a hose pipe with a nozzle attachment that penetrates deep into the soil. Applying fertilizer to keep the tree healthy will help it cope with drought as well as pests. Avoid causing mechanical damage that predisposes trees to pest attack.

There is no known cure for aspen dieback in natural stands although regenerated stands seem to cope with stressors better than old stands. Thus, logging and control burns encourage re-sprouting of aspen resulting in young more resilient stands.



Aspen Dieback

# Aspen Dieback



# Wild Boar > At Large

An invasive pest in Alberta



310-FARM (3276)  
agriculture.alberta.ca/  
wildboar  
January 2017

## Why are we concerned about wild boar in Alberta?

Wild boar are farmed in Alberta as livestock. However, when they are not being raised as livestock on a farm, they are considered to be "at large" and are an invasive pest that can:

- Damage property, agricultural crops, pastures and the environment, including through rooting (digging);
- Endanger people and animals;
- Harass livestock and consume their feed, prey on young livestock and wildlife;
- Spread diseases that could be transmitted to wildlife, livestock, pets and people;
- Alter the ecosystem, including through wallowing (rolling around), that can contaminate water supplies, promote erosion, and destroy fish habitat;
- Compete with wildlife and destroy other sensitive natural habitats; and
- Consume the eggs of ground-nesting birds.

### Are wild boar native to Alberta?

Wild boar are not native to Alberta. They came to the province in the 1980s and '90s as livestock. Over the years, some animals escaped, and have established several feral/wild populations.

### How do they survive in the winter?

Wild boar are very adaptable. The wild boar in Alberta are typically the Eurasian type and have long dark hair and a woolly underfur that protects them from extreme cold. They build nests where they shelter during cold weather and are able to travel in deep snow to access food sources.

### In what kind of habitat are they found?

Wild boar prefer habitats that provide forest cover for hiding and resting, as well as access to food. During the summer months they can be found close to water sources where they can wallow to stay cool.

### What do they eat?

Wild boar will eat just about any organic matter. They are omnivores, which means they will eat plants, insects, and other animals. They have a "cartilaginous disc" on their snouts, which helps them to dig and root extensively in search of insects and roots. They can use their very sharp tusks for rooting, as well as protection.



## Wild Boar At Large: An invasive pest in Alberta



### What should I do if I have wild boar on my land?

If Albertans have wild boar at-large on their land, they should call 310-FARM (3276). Provincial government staff will collect the information and work with the landowner and the municipality to help find a solution.

#### What are signs of wild boar at-large to watch for?

##### Signs of boar activity include:

- Tracks in the snow or mud, or trails of groups ("sounders") of boar
- Signs of boar digging or rolling around (rooting and wallowing)
- Signs of boar eating your livestock feed
- Boar droppings



#### Can I hunt wild boar?

People who want to help remove pests from property are allowed to do so, and there is no licence, season, or limits for wild boar at-large. Be aware that general laws around firearms and trespassing apply and must be followed. Contact your local police or Fish and Wildlife Office for more information.

#### > Did you know?

Non-professional hunting of wild boar at-large can actually make it harder for organized control efforts. Boar are very smart! Hunting can make them learn quickly to avoid humans, and this can make the problems worse.

#### What are the regulations for wild boar in Alberta?

In 2014, Agriculture and Forestry's Wild Boar Minimum Containment Standards were enacted for farmed wild boar. These enhanced fencing requirements were put in place to help prevent boar from escaping and becoming pests at-large. When wild boar are in captivity, they are considered livestock as long as the farmer meets the fencing standards.

Wild boar at-large are a pest under provincial law, through the Pest and Nuisance Control Regulation. Under the *Agricultural Pests Act*, landowners are required to control or destroy them and prevent them from becoming established on their land.

To report wild boar at-large or for more information, please call 310-FARM (3276) toll-free in Alberta. [agriculture.alberta.ca/wildboar](http://agriculture.alberta.ca/wildboar)

January 2017



# Minimum Containment Standards for Alberta Wild Boar Farms

## CONTAINMENT STANDARDS

### Fence Construction:

There will be two acceptable minimum containment standards. Wild boar producers have a choice of either building a fence that is partially buried into the ground (standard 1) or using a double fence system (Standard 2). Both of these fencing systems require an electric fencing component.

Standard 1 Buried fence with an electric wire.		Standard 2 Double fencing system with an electric wire.	
Fence height above surface*	Minimum 1.5 metres	Outer fence height above surface*	Minimum 1.5 metres
Fence depth below surface	Minimum depth of 45 cm	Inner fence height above surface*	Minimum 1.5 metres
Fence material:	Hinge lock mesh fencing made from 12.5 gauge or heavier high tensile wire with spacing adequate to prevent escapes.	Fence material:	Hinge lock mesh fencing made from 12.5 gauge or heavier high tensile wire with spacing adequate to prevent escapes.
Fence posts:	Maximum spacing between posts is 3 metres.	Fence posts:	Maximum spacing between posts is 3 metres.
		Distance between fences	A minimum of 1.2 metres and a maximum of 5.0 metres
Electric wire:**	Made of minimum 14 gauge high tensile or stranded wire and must be 10 cm to 30 cm in distance from the inside of the fence and 10 to 30 cm above the ground.	Electric wire:**	Made of minimum 14 gauge high tensile or stranded wire and must be 10 cm to 30 cm in distance from the inside of the fence and 10 to 30 cm above the ground.
Electric output:	Minimum of 4000 volts must pass through at all points along the entire perimeter of the electric fence.	Electric output:	Minimum of 4000 volts must pass through at all points along the entire perimeter of the electric fence.

- ◆ Fence height must be such that a minimum of 1.5 metres are above the ground surface or above any other surface including snow drifts.
- ◆ If two electric wires are used then it is suggested that the wires be placed at 20cm and 40 cm above the surface and that separate fence chargers be used for each wire.

### Maintenance:

It is expected that all producers will maintain their fences in good conditions at all time. This will include, but not limited to, maintaining proper tension on the fencing material, ensure that vegetation is trimmed below the electric wires and replacing the fence posts as required.

### EXCEPTIONS TO THE CONTAINMENT STANDARDS

#### Existing Fences:

The following exception to Containment Standards is available for those producers with existing fencing systems:

- ⇒ The Bottom of the existing fence must be anchored to the surface with stakes spaced no more than 1.5 meters apart and the stakes must be a minimum of one metre into the ground sloped at a 45° angle to the outside of the enclosure. This will be considered as equivalent containment to buried or double fencing.
- ⇒ All other fencing requirements regarding height, fencing material, electric wire and fencer output must be met.

#### Repair or replacement of fences:

Repairs, replacement, or modifications to existing fences may require an upgrade to the existing Containment Standards. Producers will be encouraged to consult with inspectors.

All existing wild boar fencing systems will be required to conform to the Containment Standards no later than December 31, 2018. It is estimated that that buried fences could have a life span of four to seven years depending on the type of soil and moisture conditions. A double fence could last longer with fencing material lasting up to 15 years.

# Foreign Ownership of Agricultural Land in Alberta

## What Laws affect foreign ownership of land in Alberta?

The *Agricultural and Recreational Land Ownership Act* and *Foreign Ownership of Land Regulations* are designed to restrict the acquisition of prime agricultural and recreational land by non-Canadians and foreign-controlled corporations. This applies to any transaction involving controlled land, including a lease, option to purchase, sale agreement, right of first refusal, asset purchase, or share transfer. This legislation does not apply to Crown dispositions.

## What land is included?

The Legislation refers to prime agricultural and recreational land as “controlled land.” Urban lands are not affected by this legislation as the definition of controlled lands does not include land within boundaries of a city, town or village. If there is doubt on whether or not land constitutes “controlled land,” the Land Titles Office can determine if the lands are within urban boundaries.

## Who is affected by these laws?

This legislation affects non-Canadian individuals and organizations or foreign-owned corporations that are seeking to buy land in Canada. It does not affect the ability of Canadian citizens or permanent residents to buy agricultural land, though it does place limitations on who it can be sold to. Note that these laws do not apply retroactively.

## What is foreign controlled corporation?

The legislation clarifies that a foreign-controlled corporation is one where the percentage of foreign ownership is 50% or greater. It further clarifies that if the corporation has shares that are traded on the stock exchange in Canada, at least 2/3 of the directors must be Canadian citizens (or permanent residents).

## How much land can be owned by foreign citizens and foreign controlled corporations?

Unless an exemption is applied for, non-Canadians and foreign-controlled corporations may only own up to two parcels of controlled land, which cannot exceed 20 acres in total. Note that your lawyer may have a Foreign Ownership of Land Declaration signed and submitted to the Land Titles Office with the transfer of land, even if the parcel involved is less than 20 acres. This is done in order to prevent delays in sales of acreages that can arise if a Land Titles Office examiner has questions, even if the title shows the number of acres included.

## What Exemptions exist?

- A right of entry order under the *Surface Rights Act*, pipeline and pipeline facility under the *Pipeline Act*, or various utilities under the *Water Act*, *Gas Act*, *Electric Act* and *Telephone Act*, or *Telephone Companies Act*;
- Acquiring an interest for the purpose of establishing an industrial, processing, manufacturing, commercial or transportation facility less than 80 acres;
- Extraction for sand, gravel, clay or marl under 160 acres;
- A residence under 20 acres or residential development under 80 acres;
- Acquisition by a foreign state for diplomatic or consular purposes;
- An executor who manages an estate on behalf of a deceased person;
- The courts can order than owner’s interest can be put to benefit a spouse, independent partner, or child of the owner; or
- Burial lots under the *Cemeteries Act*.

Any non-Canadian or foreign controlled corporation seeking an exemption other than what has been outlined above has the option of apply for an Order in Council to Foreign Ownership of Land Administration with Alberta Land Titles. Typically these are limited to situations where the transaction is related to estate planning matters or a development that would provide an economic benefit to the province of Alberta. These applications are assessed on a case-by-case basis.

## How do these laws affect leases?

A non-Canadian can hold a lease on controlled lands if the term is no longer than 20 years and there in no renewal option that enables the extension of a term longer than 20 years.

## What About Options-to-purchase?

A non-Canadian may enter into an option-to-purchase on controlled lands. However, the option must be exercisable within 1 year. Additionally, it can only be exercised if the non-Canadian becomes eligible under the regulations by becoming a Canadian Citizen or permanents resident, using an applicable exemption, or obtaining an Order in Council.

*Continued on next page*

## Foreign Ownership of Agricultural Land in Alberta continued...

### What about “indirect” acquisition of controlled lands?

An indirect acquisition refers to a change in control of a corporation, either through a share sale, share transfer, merger or amalgamation. If such a transaction takes place, the now foreign-controlled company must divest its interest in the controlled lands within 3 years, unless it ceases to be foreign-controlled for a period of 12 months during the 3 year period.

### What about Mortgages?

A mortgage interest in controlled land is not restricted unless a foreclosure occurs, in which case an ineligible person or foreign controlled corporation must divest themselves of any interest in the controlled land within 3 years.

### How are these laws monitored?

When land transactions such as transfers, caveat transmissions or leases are registered with the Foreign Ownership of Land Administration in Land Titles Office, a statutory declaration confirming Canadian ownership or explaining the structure of the corporation will be required,

**Farmers Advocate Office**

**310-FARM (3276)**



## Safety Winter Burning Practices

The 2017 Fire Season ended October 31, 2017. Although you no longer require a fire permit for burning within Forest Protection Areas, once you light a fire, you are responsible if a wildfire results from the burn. Take the time to properly prepare your burn site, know the requirements you need to be successful during your burn and know how to extinguish your site,

- Have someone on site monitoring the burn the entire time—if it escapes, immediately report it to 310-FIRE.

- Only burn what you can control with the equipment and people you have available and always burn according to weather conditions.
- Always ensure proper safety precautions are taken when burning and appropriate signage is in place when burning within a mile of a roadway. Always take safety concerns that may arise from the smoke your burning creates into considerations.

After you burn:

- Spread out the remaining material within the pile.
- Soak the area and ensure both heat and smoke are no longer being produced by the pile—it should be cool to the touch.
- Check your burn site multiple times in the coming weeks to ensure it has not reignited.

Safe burning practices are always in season—don’t let your winter burn come back to life in the spring.

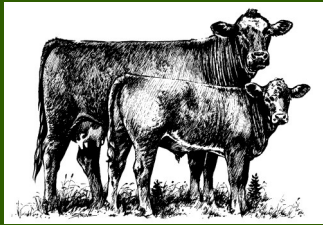
## Free Annual Ski Trip for K-12 Students

Annually, the County funds a one day ski-trip to Whispering Pines Ski Hill near Worsley, Alberta for Kindergarten to Grade 12 students that reside in Clear Hills County.

For more information contact the County office at 780-685-3925 or [audrey@clearhillscounty.ab.ca](mailto:audrey@clearhillscounty.ab.ca)







# Do you have livestock?

Are you aware of the VSI (Veterinarian Services Incorporated) Program?

- ◆ Aids in the development of livestock expansion with a long term goal of the producer and veterinarian service sustainability.
- ◆ The VSI Program supplies a cost-share support to livestock producers, whereby Clear Hills County covers 50% of the cost eligible veterinary procedures.
- ◆ Membership is \$31.50 (GST included) for a five year term.

Call the County office at 780-685-3925 for more information or to get a registration package today.

## Do you know the County has a BSE Testing Incentive?

In 2016 Clear Hills County introduced a BSE Testing Incentive Program to encourage producers to participate in the BSE Testing Program and assist in realizing the target of 30,000 beef cattle annually being tested to keep Canada's status as a controlled BSE risk Country.

**Eligibility:** VSI member and resident/landowner in Clear Hills County with livestock.

**Restrictions:** Only Veterinarian Clinics (and livestock owners) will have access to the results of the BSE Test.

**Process:** VSI Services provides the County with a list of members that had beef cattle tested in the quarterly report. County pays the member. 2018 incentive is \$125.00 per animal tested.



## Continuing Education Scholarship

**Deadline: February 1, 2018**

Are you registered in an apprenticeship, trades or post secondary program?

Are you a Canadian Citizen or landed immigrant? Have you resided in Clear Hills County or the Village of Hines Creek for at least one year?

3 Levels of Funding Available:

**Level 1: \$15,000:** Attending a trades school, college or university. (\$3,000 will be released the first year and \$3,000 each consecutive year pending active enrollment in the approved program).

**Level 2: Up to \$2,500:** Distance learning for a trade, apprenticeship or post-secondary career.

**Level 3: Up to \$1,250:** Computer or book keeping Classes.

For more information or to receive an application package stop by the County office or give us a call at 780-685-3925.



## Driveway Snowplowing Program

Clear Hills County provides Driveway Snowplowing to senior citizens, special needs persons and fulltime bus drivers.

If you did not sign up last season and qualify contact the County office.

All senior citizens

requesting snowplowing services are required to provide proof of age. Special needs person are required to provide provincial handicap sticker and fulltime bus driver is required to provide proof of full time employment.





## NEWS FROM AGRICULTURAL FINANCIAL SERVICES CORPORATION (AFSC)

### Changes in Perennial Crop Insurance

Responding to feedback from clients, AFSC has adopted simplified coverage and price options for the perennial crop insurance programs. There will be two spring price options instead of four in the Hay Insurance and Moisture Deficiency Insurance (MDI - pasture) programs. Under MDI, all "full season" options have been dropped, and of the eight remaining "split season" options, those associated with the Spring Soil Moisture (SSM) program have also been eliminated. Producers will still receive the benefits as calculated under the full season options formula. For the Moisture Deficiency Endorsement program, coverage options have been reduced to four with SSM being taken out from all remaining options. The last day to apply for AFSC Perennial Crop Insurance is February 28.

### New weather stations

As part of the regular review of AFSC's insurable weather station network, five new stations are being added to the network in 2018, with two of those stations being in Clear Hills County. Worsley station is located south of Worsley and the other station named Eureka River is located northwest of Eureka River. Other new stations are Whitemud Creek, Redwater and Greencourt.

### Changes in AgriStability program

As the AgriStability program moves from Growing Forward 2 to the Canadian Agricultural Partnership (CAP), there are three changes. The first change concerns the reference margin limit which will now be capped/limited to ensure a more equitable level of support for all producers. This means producers subject to limiting are guaranteed at least 70 per cent of their calculated Reference Margin when the Reference Margin limit is applied. The second change is a minimum payment of \$250. The last change is late participation and this is intended to allow provincial governments the ability to open enrolment should there be a significant agricultural disaster.

### Western Livestock Price Insurance Program (WLPIP)

WLPIP has now become a permanent risk management tool for cattle producers and hog farmers following a third-party assessment of the program concluded that it is a "unique, self-sustainable and actuarially sound" program. The assessment was commissioned to look at the operational viability of the program through its pilot phase. WLPIP's Fed, Feeder and Hog insurance policy purchases are available throughout the year and Calf policies will be available beginning February 1 until May 31.

### New lenders at AFSC Fairview office

AFSC's Fairview office has two new lending specialists to help with the borrowing needs of the clients in the area. They are Lori Kinnee (780.835.7037) and Sydney Siegle (780.835.7035) and they can both be reached through Fairview office reception as well.

For more information about AFSC's programs and services please contact us.

[www.AFSC.ca](http://www.AFSC.ca) • 780.835.4975 • [@AFSC\\_AB](https://twitter.com/AFSC_AB)



# Clear Hills County Trade Show

The involvement of area business has greatly contributed to the success of this event each year, and we invite you to display goods and services to the 1500+ people who pass through the gates each year.

The 24th Annual Agricultural Trade Show will be held Saturday, April 14, 2018 at the Dave Shaw Memorial Complex in

Hines Creek, Alberta.

Once Again, the Trade Show will be held in conjunction with the Hines Creek and District Agricultural Society Spring Fair and Hines Creek Arts and Crafts Exhibitions.

We also invite you to attend the Farmers' Appreciation Banquet, following the Trade Show at 5:30 p.m. Banquet entertainment will be

**Sponsorship & Exhibitor Packages will be available January 2018.**

**Contact the County office for further information.**

## Farm Family Award

Did you know a farm family that does exceptional farming practices? Is that family involved in the local community?

Clear Hills County Agricultural Service Board is accepting nominations for the 2018 Farm Family Award.

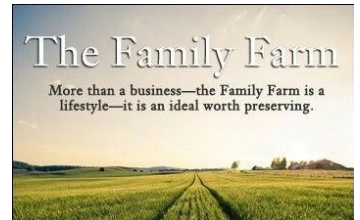
The Winning family will be presented with a gate sign and a plaque at the Farmer's Appreciation Banquet on April 14, 2018. They will receive up to eight banquet tickets to attend the Grande Prairie Re-

gional Peace Country Classic Regional Farm Family award night and the family will be nominated to Northlands for consideration of the 2018 AMA Farm Family Award.

The Farm Family Award will be selected from Clear Hills County, Ward 1 (Whitelaw area). They must be actively farming and residing on the farm. Selection of the 2018 Farm Family is based on farming and community involvement.

Nomination Forms will be available at the County office.

Nominations must be received at the County office no later than 1:00 p.m. March 2, 2017



I cannot look at modern buildings without thinking of historical ones

Kevin McCloud  
PICTUREQUOTES.COM

## Identifying Local Historical Landmarks

Do you know the site of an old school house, inactive cemetery, original community site, or other historical site in the County that should be identified so this knowledge isn't lost?

Contact the County office for an application and more information on this program, 780-685-3925.





# Transfer Station Cold Weather

When the temperature is  $-40$  or below and it has not warmed up before 9:30 a.m., Landfills and/or Transfer Stations will be closed for the day. Please call the County office before travelling to the Landfills/ Transfer Stations to confirm closure.



## How fast is the light in miles per second?

The speed of light in a vacuum is 186,282 miles per second (299,792 kilometers per second), and in theory nothing can travel faster than light. In miles per hour, light speed is, well, a lot: about 670,616,629 mph. If you could travel at the speed of light, you could go around the Earth 7.5 times in one second.

# Understanding your Land Title

continues on next 2 pages

The Farmers' Advocate Office (FAO) has produced a new resource for landowners who are hoping to gain a better understanding of their land title.

The document offers a visual overview of land titles, explaining language and the notations most commonly experienced by Alberta farmers and ranchers. The document, *Understanding Your Land Title*, is available online, but can also be mailed to those who prefer hard copy.

The FAO offers several key pieces of advice to landowners regarding their title:

- **Keep your address up to date.** "The address on your title is

the one that will be used by energy and utility companies if they need to get in touch with you," explains Jeana Schuurman, rural engagement and communications specialist with the FAO. "Make sure your title is linked to whatever mailbox you check the most regularly."

- **Be careful when adding names on title.** "Sometimes people think that "adding another name on title" is a relatively benign action, but there be unintended repercussions if the options are not well understood," warns Schuurman, "If

you add a joint tenant, your actually conveying partial ownership, which means that if one party was to pass away, the other would automatically receive the estate."

Registry offices will not give business advice, and the FAO suggests consulting a lawyer before making these types of changes on title.

- **Keep copies of your agreements with energy and utility companies.** "Many landowners assume that copies of their surface leases and right-of-way agreements are stored on their land titles, but they are not," explains Schuurman. "It's

important to keep copies of your agreements in case problems with the site arise or the company doesn't pay its annual rental."

For more information, call 310-FARM (3276) or email [farmers.advocate@gov.ab.ca](mailto:farmers.advocate@gov.ab.ca)

# LAND TITLES

## An Overview

A LINC is a Land Identification Number Code. This is a handy number to remember as it is permanently linked with the property rather than the owner. It is a random computer-generated number that has no meaning.

The province is divided into 3 meridians that run longitudinally. Ranges also run vertically, and they are between the meridians.

Townships run horizontally, starting at the US Border with at 1. A township contains 36 sections, and they are ordered starting in the southeast corner.

Your short legal land description is always abbreviated on title in the following order: Meridian, Range, Township, Section, Quarter. Be careful because people will not always use this order when communicating in ordinary life!

The Torrens system of dividing land is very organized, but not all properties are perfectly square. The "excepting thereouts" on your property may follow topographical features, in which case it would be described in metes and bounds. Although this was done historically, land is no longer subdivided this way.

**S LINC**  
0000 123 123

**SHORT LEGAL**  
0;00;00;00;SE

**TITLE NUMBER**  
111 111 111

**LEGAL DESCRIPTION**

**MERIDIAN 00 RANGE 00 TOWNSHIP 00 SECTION 00**  
**ALL THAT PORTION OF THE SOUTH EAST QUARTER DESCRIBED AS FOLLOWS: COMMENCING AT THE SOUTH EAST CORNER OF THE SAID QUARTER SECTION: THENCE NORTHERLY ALONG THE EAST BOUNDARY....**

**EXCEPTING THEREOUT**  
**X.X OF A HECTARE (X.X OF AN ACRE) MORE OR LESS AS SHOWN ON ROAD PLAN 0000 PLAN NUMBER HECTARES (ACRES) MORE OR LESS**

**EXCEPTING THEREOUT ALL MINES AND MINERALS**

There may be "excepting thereouts" for road use plans. If you are interested in seeing the road use plan, these can be found on SPIN under Registered Documents.

Road use plans can sometimes help identify the origin of certain public infrastructure that is not listed elsewhere on title (ditches, bridges, etc.)

The majority of Albertan landowners do not own the subsurface rights to their land and will therefore see the words "Excepting Thereout All Mines and Minerals" beneath each quarter.

**ESTATE: FEE SIMPLE**

**MUNICIPALITY: ROCKY VIEW COUNTY**

**REFERENCE NUMBER: 981 380 348**

Fee simple is the highest form of land ownership in Canada. It means you have absolute tenure over the land and ability to dispose of it freely.

REGISTERED OWNER(S)				
REGISTRATION	DATE(DMY)	DOCUMENT TYPE	VALUE	CONSIDERATION
000 000 000	17/05/2016	TRANSFER OF LAND	\$XXX,XXX	NOMINAL

**OWNERS**

**FIRST NAME MIDDLE NAME LAST NAME**

**AND**

**FIRST NAME MIDDLE NAME LAST NAME**

If you are thinking of "adding a name on title," it is important to understand the full repercussions of that decision. A joint tenant means you are transferring partial ownership to another person. In the event of death, a joint tenant will automatically receive the estate. In contrast, if a tenant-in-common dies, their share goes towards their heirs, not the surviving tenants.

It is so important to keep your address on title up to date! This is the address oil and gas companies will use if they are trying to get in touch with you.

**BOTH OF:**  
**ADDRESS**  
**CITY**  
**PROVINCE, POSTAL CODE**  
**ALL AS JOINT TENANTS**

"Caveat" is a Latin word meaning "let him beware." On title, a caveat provides a warning that the caveator claims in interest in that parcel of land. Caveats can only lapse, or be withdrawn or discharged. Only one caveat can be registered for each surface lease, so you'll never see two caveats registered for the same development.

A lease is a contract that provides a lessee to exclusive possession of the property for a defined term. The lessor's interest is considered "fee simple estate in reversion" because it can revert back to the grantor at the end of the lease term.

Copies of surface leases or amendments to surface leases are not registered on title, so it is important to maintain your personal records. If the company was to become insolvent, the application to the Surface Rights Board is simpler with a copy of the surface lease.

REGISTRATION NUMBER	DATE (D/M/Y)	PARTICULARS
000 000 000	00/00/0000	CAVEAT RE : SURFACE LEASE CAVEATOR - NAME OF COMPANY ADDRESS AGENT - FIRST NAME LAST NAME "DATA UPDATED BY: CHANGE OF ADDRESS FOR SERVICE NO. 000000000" (DATA UPDATED BY: TRANSFER OF CAVEAT 000000000)

Curious about who held the caveat in the past? You can find more details in the transfer of caveat documents under "Additional Documents" in SPIN.

000 000 000	00/00/0000	CAVEAT RE : RIGHT OF WAY AGREEMENT CAVEATOR - NAME OF COMPANY ADDRESS OF COMPANY
-------------	------------	---

A restrictive covenant refers to an agreement to use the land in a certain manner. These are negative in nature (i.e. you cannot do X) to ensure there is a mechanism for enforcement.

000 000 000	0/00/0000	RESTRICTIVE COVENANT
000 000 000	0/00/0000	CAVEAT RE: RESTRICTIVE COVENANT

A restrictive covenant always has a party that restricts behaviour and a party that benefits from that restricted behaviour. This caveat will affect subsequent owners of the land, but it cannot be discharged in the same way as a typical caveat. Landowners should be aware that restrictive covenants from the municipality can only be discharged through the municipality or the courts.

000 000 000 0	0/00/0000	CAVEAT RE : EASEMENT CAVEATOR - NAME OF COMPANY ADDRESS AGENT - FIRST NAME LAST NAME
---------------	-----------	--

An easement confers on the owner of a parcel of land "the right to use the land of another in some way, or to prevent it from being used for certain purposes."

A blanket easement may cover the entire parcel, not just the location of the infrastructure. In agriculture, easements are most commonly used for roads and utilities.

000 000 000	00/00/0000	UTILITY RIGHT OF WAY GRANTEE - NAME OF COMPANY ADDRESS AS TO PORTION OR PLAN: 0000000 (DATA UPDATED BY: TRANSFER OF UTILITY RIGHT OF WAY 000000000) (DATA UPDATED BY: CHANGE OF ADDRESS 000000000)
-------------	------------	---

000 000 000	00/00/0000	MORTGAGE MORTGAGEE - NAME OF BANK ADDRESS CITY PROVINCE, POSTAL CODE ORIGINAL PRINCIPAL AMOUNT: \$000,000
-------------	------------	--

A certificate of title may be put up as collateral or security for a mortgage.

An above ground or below ground utility right of way may be granted for various purposes, including wires and cables, pipelines, water, or sewage.

**Farmers' Advocate Office**  
310-FARM (3276)  
farmers.advocate.@gov.ab.ca

[www.farmersadvocate.gov.ab.ca](http://www.farmersadvocate.gov.ab.ca)

Advice provided by the Farmers' Advocate Office is provided for general information only. This information may not be relied upon as legal advice or as substitute for it. You are responsible for applying any general information provided to your particular situation, if appropriate, and deciding upon a course of action. The Farmers' Advocate Office and Alberta Agriculture and Forestry make no warranty, expressed or implied, and do not assume any legal liability or responsibility for the accuracy, completeness, or usefulness of any information provided to you. For all important business and personal matters, you should consider obtaining independent legal and other professional advice to properly assess and understand your options and obligations.



## Media Release

### **Update on Local Snowmobile Trails**

Snow falls in the area have provided for an excellent start to the season allowing snowmobilers to get out on the local snowmobile trails provided by the Peace Valley Snow Riders. Although recent warm weather has settled the snow, this has provided an excellent base and subject to additional snowfall, the trails will be the perfect the place to take a ride this Christmas season. Please know that direction signage is in place to assist snowmobilers in locating the staging areas. For those considering doing so, following is a current update in regards to the trails:

Osmond/Getaway Cabins Leddy Lake Trail – Located north of Peace River on Secondary Highway 743 and Township Road 854, the staging area is located in the Leddy Lake Recreation Area where there is an outdoor fire pit as well as a warm up shelter available. This trail was reopened on December 8<sup>th</sup> following a major upgrade that provides a wider trail and improved signage. The loop at the Leddy Lake end of the trail remains to be upgraded as there was insufficient frost in the muskeg to allow for mulcher access. The upgrade of this section is planned for late spring. Grooming took place in conjunction with the opening the trail.

Wesley Creek Trail – Located on the east side of the Peace River near St. Isidore, the staging area can be accessed from Secondary Highway 688 and Township Road 842. Starting this winter, the residents of St. Isidore can access this trail from the east side of the Hamlet. This trail is very family friendly and offers a rest area with fire pit and picnic table. Grooming took place just prior to the trail being opened for the year on December 1<sup>st</sup>.

Smith Mills Trail – This trail has not yet been opened for the season although it is accessible from both the east and west ends, with the east end having recently been cleared of vegetation. Those accessing the trail prior to opening do so at their own risk due to vegetation on the trail and as other hazards that have appeared since last season potentially not yet being properly marked. A work bee is being planned prior to Christmas to clear vegetation from the west end of the trail and once this has taken place, the trail will be opened. There is a recent new addition to this trail as an outhouse has been installed in association with the fire pit and picnic table at the rest area located at approximately the midpoint of the trail.

- East end staging area – Located north of Warrensville in the Figure Eight Lake area, this staging area can be accessed from Secondary Highway 737, Range Road 251 and Township Road 850.
- West end staging area – Located on the Canfor P-100 road just north of the Stony Lake Recreation Area. As the Canfor P-100 road is actively being used by log trucks, please

use extreme caution when travelling on this portion of road and give right of way to the large trucks, particularly when loaded.

Hines Creek Trail – This is the latest project of the Club with development work having commenced in November this year. Although mulching of the trail was completed on Wednesday December 6<sup>th</sup>, this trail will remain closed for the season. Due to the significant snow in the area, the mulchers have left very rough windrows of snow that are filled with dirt and wood debris. The next step would have been for a slashing crew to clear vegetation remaining on or sticking into the trail and for volunteers to complete the installation of signage, however the depth of the snow and condition of the trail does not make this practical to complete this year. This work will take place early next winter at which time the trail will be opened for use. As the trail is extremely rough, contains numerous hazardous and is not signed, access is highly discouraged even in the event of additional snowfalls. Those that consider access risk the potential of personal injury and/or damage to their sleds.

Prior to the use of any of the Peace Valley Snow Riders Trails, snowmobilers are to purchase an Alberta Snowmobile Association Annual Trail Pass for \$70 (prior to the New Year) available from the Alberta Snowmobile Association on line, local Peace River snowmobile dealerships or Scanalta Power Sales Ltd. in Hines Creek, or a Day Pass for \$20/day available from the self registration boxes located in conjunction with the staging area signs. It must be noted that some of the Club's trails cross private land and hence those accessing these trails without a valid Trail Pass or Trail Pass holders that leave the trail in these areas may be subject to fines under the Trespass Act for which first offence is \$5,000. Please support the work of the Peace Valley Snow Riders by purchasing your Trail Pass today.







# Black Henbane

(*Hyoscyamus niger*)

**Provincial Designation:** Noxious

## Overview:

An annual or biennial (forming a rosette the first year) plant that reproduces by seed only. Black henbane was introduced from the Mediterranean and has been used as a medicinal plant since the Middle Ages, and was also used in ancient religious rites because of its hallucinogenic properties. It was even used as a flavoring in beer until the Bavarian Purity Law of 1516. All parts of the plant are poisonous to humans and animals when ingested – tissues contain several toxic alkaloids. Symptoms of poisoning include impaired vision, convulsions, coma, and death from heart or respiratory failure.

It is a member of the nightshade family and also called 'stinking nightshade'. A single plant can produce as much as half a million seeds in one season, which are viable for about 4 years.

## Habitat:

Black henbane grows in a wide range of soil textures and pH but does require well drained soil. It does not tolerate shade.



## Identification:

The entire plant is covered with greasy hairs and has a thick, fleshy taproot.

**Stems:** Stems are upright, tough – almost woody - and can be very thick. Plants can grow to 1m or taller and may be branched or unbranched.

**Leaves:** Leaves are alternate, large – up to 15 cm wide and 20 cm or more long – and have a heavy, foul scent. Leaf edges are shallowly lobed (variable) and veins are conspicuous.

**Flowers:** Flowers are pale yellow with deep purple veins and throats and are borne on spikes. Flowers are hermaphroditic – both male and female organs – and have a strong, unpleasant smell. The calyx (flower base) forms a 2.5 cm urn-shaped fruit with a thickened lid that pops off at maturity and spills the numerous, tiny, black-brown seeds.

## Prevention:

Black henbane is not a strong competitor, so maintaining healthy vegetation should prevent establishment. Despite its toxic properties, this plant is still valued by some for its medicinal values. Homeopathy enthusiasts and gardeners should never grow non-native plants that could escape cultivation.

## Control:

**Grazing:** Livestock will avoid Black henbane unless no other forage is available, therefore poisoning cases are rare. Dried plant matter in baled forage retains its toxic properties though, and will be readily consumed.

**Cultivation:** Does not survive cultivation but must be done before seed production to prevent spread.



PHOTOS: Alberta Sustainable Resource Development



Seed Capsules

**Mechanical:** Mowing is effective, but difficult because of its thick, tough stem. Hand pulling is also effective – be sure to wear gloves and protective clothing to prevent rashes. Care should be taken with mature plants to avoid spreading seed – these can be burned to kill the seed.

**Chemical:**<sup>1</sup> Picloram, dicamba, metsulfuron, 2,4-D, and Glyphosate can be used pre-bloom. Consult your local Agricultural Fieldman or Certified Pesticide Dispenser for more information.

**Biological:** None researched to date.


<sup>1</sup> Always follow the product labels. The use of pesticides in any manner not published on the label or registered under the *Minor Use of Pesticides* regulation constitutes an offence under both the *Federal Pest Control Products Act* and *Alberta's Environment Protection and Enhancement Act*.



Worsley Health Centre

# JANUARY

# 2018

Sunday	Monday	Tuesday	Wednesday	Thursday	Friday	Saturday
	<b>1</b> 1 CLOSED Happy New Year 	<b>2</b> Nurse Practitioner Clinic-call for appointment	<b>3</b>	<b>4</b> Nurse Practitioner Clinic-call for appointment	<b>5</b> Nurse Practitioner Clinic-call for appointment	<b>6</b>
<b>7</b>	<b>8</b> Nurse Practitioner Clinic-call for appointment	<b>9</b> Nurse Practitioner Clinic-call for appointment	<b>10</b> Dr. Clinic	<b>11</b> Nurse Practitioner Clinic-call for appointment.	<b>12</b> Nurse Practitioner Clinic-call for appointment	<b>13</b>
<b>14</b>	<b>15</b> Nurse Practitioner Clinic-call for appointment	<b>16</b> Nurse Practitioner Clinic-call for appointment	<b>17</b> Dr. Clinic	<b>18</b> Nurse Practitioner Clinic-call for appointment	<b>19</b> Nurse Practitioner Clinic-call for appointment	<b>20</b>
<b>21</b>	<b>22</b> Nurse Practitioner Clinic-call for appointment	<b>23</b> Nurse Practitioner Clinic-call for appointment	<b>24</b>	<b>25</b> Nurse Practitioner Clinic-call for appointment Tiny Teeth Clinic	<b>26</b> Dr. Clinic Nurse Practitioner Clinic-call for appointment	<b>27</b>
<b>28</b>	<b>29</b> Nurse Practitioner Clinic-call for appointment	<b>30</b> Nurse Practitioner Clinic-call for appointment	<b>31</b>			

Please call the Health Centre to book immunization Tiny Teeth and Nurse Practitioner appointments.

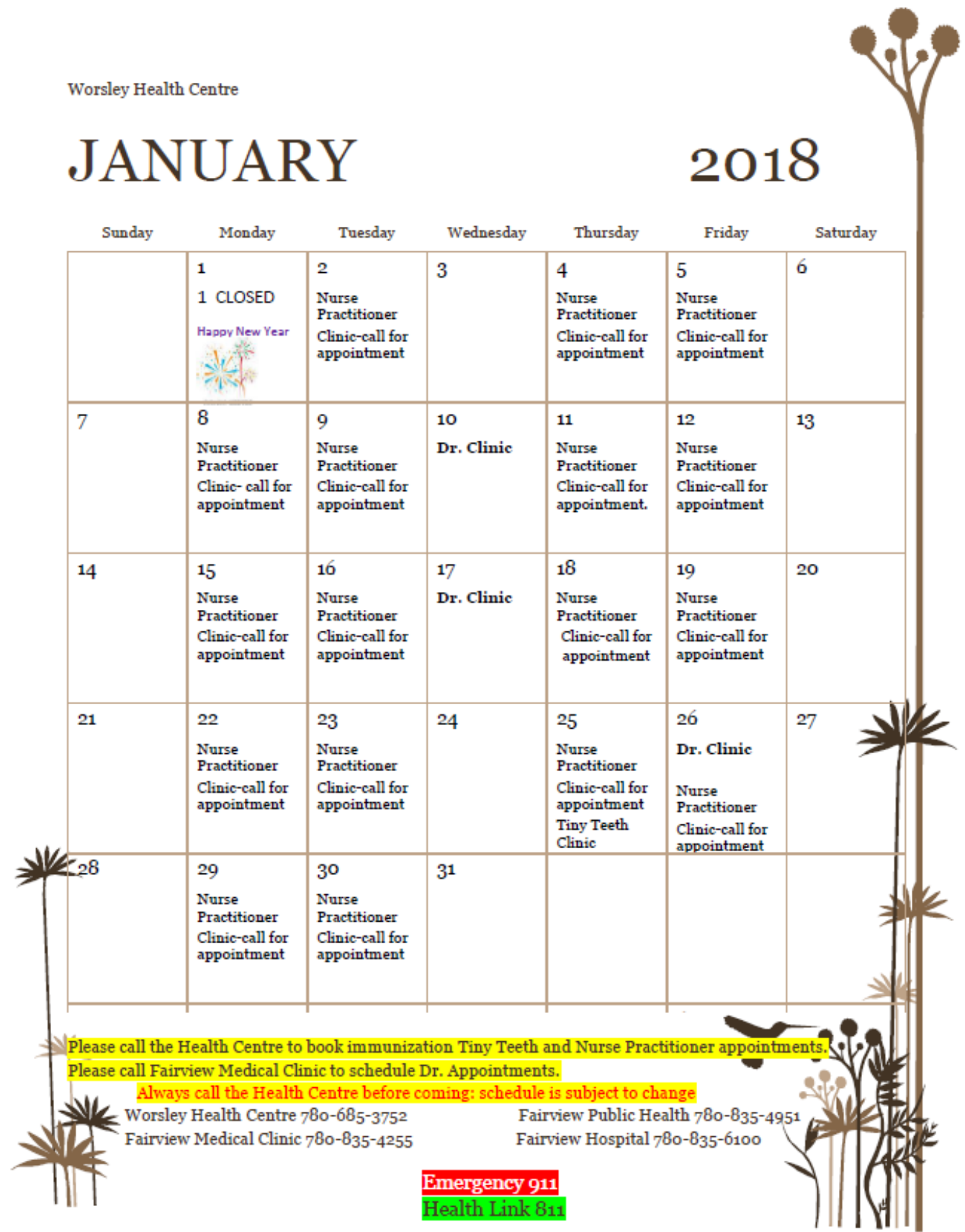
Please call Fairview Medical Clinic to schedule Dr. Appointments.

**Always call the Health Centre before coming; schedule is subject to change**

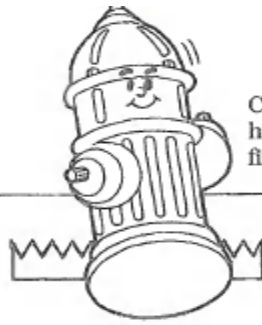
Worsley Health Centre 780-685-3752  
 Fairview Medical Clinic 780-835-4255

Fairview Public Health 780-835-4951  
 Fairview Hospital 780-835-6100

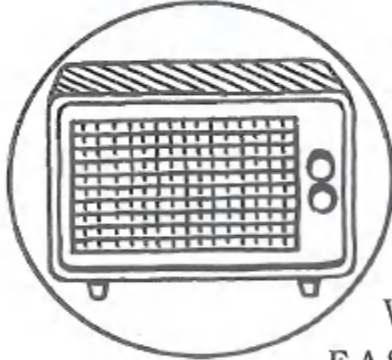
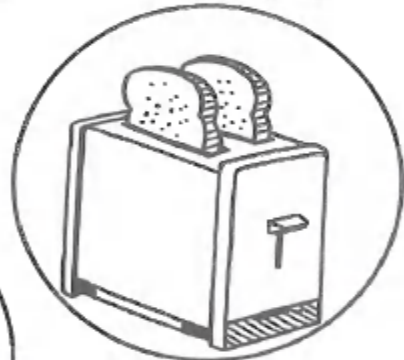
**Emergency 911**  
**Health Link 811**



# Hot Things Can Burn



Children are often not aware that many household items can cause burns or start fires.



Unscramble the letters to name some things in your home that may be **HOT!**

- RINO \_\_\_\_\_
- VESTO \_\_\_\_\_
- EASTORT \_\_\_\_\_
- EAHRET \_\_\_\_\_
- OCEFFE \_\_\_\_\_
- DELANC \_\_\_\_\_
- CROMAVIEW \_\_\_\_\_

Name: \_\_\_\_\_

Parent's Name: \_\_\_\_\_

Phone: \_\_\_\_\_

Category: \_\_Preschool \_\_K-1st grade \_\_2nd-3rd grade \_\_4th-5th grade \_\_6th grade & over

Unscramble the letters and mail to the Clear Hills County office by January 15th.

☆☆☆☆☆☆☆☆☆☆☆☆☆☆☆☆  
 ☆ Winner of the February ☆  
 ☆ contest was ☆  
 ☆ Grace Giesbrecht ☆  
 ☆ CONGRATULATIONS! ☆  
 ☆☆☆☆☆☆☆☆☆☆☆☆☆☆☆

**Community**

# Bulletin Board

## Events & Announcements

### Mommy & Me



For Parents and kids

Age 0-5

January 4th

Swimming in Fairview

11am-12 Lunch & play 12:30-1:30

January 11th in the Worsley Fire Hall

10am-12:30pm crafts, group time, lunch

Guest: North Peace Reptile Zoo

January 18th at Cleardale Skating Rink

10am-12:30 fun and lunch

Must register by Tuesday before event to  
be held. 780-834-7822



Fairview & Area Seniors Check In Line

Helping Seniors Live Independently

For More Info Call

**780-835-8873**

We listen everyday

To know your okay



# Community Groups & Organizations, Facilities & Contacts

## Worsley & District Library

780-685-3842

[www.worsleylibrary.ab.ca](http://www.worsleylibrary.ab.ca)

Worsley & District Library, housed in Worsley Central School, offers library services to the public the following days:

Tuesday & Fridays

8:00 a.m.—4:00 p.m.

The library is also opened before school and at noon hour on Mondays, Wednesdays and Thursdays. Please call ahead to confirm that the library is open.

As this is a school, we ask that patrons check in at the school office prior to coming into the library.

Your opinion matters to us. If you have read a book that you found particularly interesting and would like to promote it, why not drop us a line and tell us the book title, author, and what was enjoyable about the book. Your comments will be included on our library webpage at the address [www.worsleycentralschool.ca/Library.php](http://www.worsleycentralschool.ca/Library.php) as well as on our Facebook page at

[www.facebook.com/worsleylibrary](http://www.facebook.com/worsleylibrary)

We gratefully accept donations of gently used books and magazines.

## Worsley Pioneer Club

The Worsley Pioneer Club hosts a Seniors Social every Wednesday afternoon from 1-4 pm.

Activities include: card games, floor curling, and more.

Join us for coffee and conversation!

## Hines Creek Arts & Craft

### Meeting Room

To book the room call Gail at 780-494-3290 or 780-772-1155

## Hines Creek Senior's

### Drop in Rental

For bookings call: 780-835-1397 or 780-494-2333

## Hines Creek Municipal Library

Tuesday, Wednesday, & Thursday

10:00 am—6:00 pm

Located in the Village of Hines Creek office building.

780-494-3879

## Church Services

### Worsley Baptist Church

Sunday School - 10:00 am

Sunday Services - 11:00 am & 7:00 pm

Wednesday Night Service - 7:00 pm

### Cleardale Gospel Chapel

Sunday Service - 11:00 am

### Immaculate Heart of Mary Parish

#### Catholic Church

Sunday Service 1:00 pm

### All Saints Ukrainian

#### Catholic Church

every second Sunday 2:30 pm

### Lighthouse Fellowship

Sunday Service 11:00 am

Pastor Mike Ansley

### Mighty Peace Cowboy

#### Church

Every 1st and 3rd Tuesday Service

7:00 p.m

At the Eureka River Hall

Pastor Gary Henderson

## Bear Point Community

### Library Hours

Monday through Thursday

10:00 am—3:00 pm





Box 240  
 Worsley, AB T0H 3W0  
 Phone: 780-685-3925  
 Fax: 780-685-3960  
 Email:  
 info@clearhillscounty.ab.ca

**Allan Rowe**  
 Chief Administrative Officer  
**Lori Jobson**  
 Corporate Services Manager  
**Ron Jensen**  
 Public Works Manager  
**Audrey Bjorklund**  
 Community Development  
 Manager

### COUNCIL CONTACT INFORMATION

[council@clearhillscounty.ab.ca](mailto:council@clearhillscounty.ab.ca)

**Division #1— Miron Croy**

Box 1315, Fairview, AB T0H 1L0  
 Phone: 780-596-2187

**Division #2—Peter Frixel**

Box 552, Hines Creek, AB T0H 2A0  
 Phone: 780-494-2467

**Division #3— Amber Bean**

Box 596, Hines Creek, AB T0H 2A0  
 Phone: 780-830-9786

**Division #4—Jason Ruecker** Reeve

Box 205 Worsley, AB T0H 3W0  
 Phone: 780-835-0398

**Division #5—David Janzen**

Box 179 Cleardale, AB T0H 3Y0  
 Phone: 780-834-0197

**Division #6—Dan Fletcher** Deputy Reeve

Box 53, Cleardale, AB T0H 3Y0  
 Phone: 780-835-0658

**Division #7—Raymond Wetmore**

Box 70, Cherry Point, AB T0H 0T0  
 Phone/Fax: 780-595-2188

### Agricultural Service Board Members

Brian Harcourt—Chairperson  
 780-494-2231  
 Baldur Ruecker – Deputy Chair  
 780-685-2546  
 David Janzen —Councillor  
 780-685-2584  
 Garry Candy—Member at Large  
 780-494-2055  
 MacKay Ross—Member at Large  
 780-835-0356  
 Julie Watchorn—Member at Large  
 780-685-3035

### Fire Trailer Locations

**Bear Canyon**—Water Plant  
 NW 22 83 12 W6M

**Cleardale**—Water Plant  
 SW 11 85 10 W6M  
 780-685-3670

**Clear Prairie**—Jim Evans  
 SW 34 87 10 W6M  
 780-685-2610

**Deerhill**—Ken Knoepfli  
 NW 9 84 2 W6M  
 780-596-2259

**Eureka River**—Lee Franklin  
 NE 24 86 6 W6M  
 780-834-6080

**Royce**—Melvin Worobetz  
 SE 16 83 6 W6M  
 780-494-3420

**Whitelaw**—Bill Wald  
 SW 28 83 1 W6M  
 780-596-2121

**Montagneuse Valley**  
 Jim Stephenson yard  
 SE 36 85 5 W6M  
 Jim 780-494-2458

### County Transfer Site Hours—October 1st—April 30

All Transfer Sites are closed on Sunday

Transfer Site	Monday	Tuesday	Wednesday	Thursday	Friday	Saturday
<b>Bear Canyon</b>	10:00 am 5:00 pm	closed	closed	closed	closed	closed
<b>Clear Prairie</b>	closed	closed	closed	1:00 pm 5:00 pm	closed	closed
<b>Cleardale</b>	closed	closed	closed	closed	closed	10:00 am 5:00 pm
<b>David Thompson</b>	closed	closed	closed	closed	10:00 am 5:00 pm	closed
<b>Eureka River</b>	closed	closed	10:00 am 5:00 pm	closed	closed	closed
<b>Hines Creek</b>	closed	closed	closed	closed	closed	10:00 am 5:00 pm
<b>Royce</b>	closed	closed	closed	10:00 am 5:00 pm	closed	closed
<b>Whitelaw</b>	closed	closed	closed	closed	closed	10:00 am 5:00 pm
<b>Worsley</b>	closed	closed	closed	closed	10:00 am 5:00 pm	closed