

CLEARLY AN  
AREA OF  
OPPORTUNITY

INSIDE THIS  
ISSUE:

Council Minutes	2
Weed Inspectors	4
Yard Whispers	5
Tree Pruning	6
Tree Planting Tips	8
Roadside Spraying	10
Agricultural Burning	11
Development	12
Seniors' Week	13
Invitation to Tender Haying	15
Psychological First Aid	16
National Dig Safe Month	17
Ditching	18
Biggest Vegetable Contest	19
Worsley Health Calendar	20
Farm Safety	21
Community Contacts	22
Community Calendar	23
County Info	24

# Clear Hills County

VOLUME 18, ISSUE 6

JUNE 2020

Clear Hills County office has reopened to the public.

Rental equipment is also available. All rental equipment bookings must be made in advance, no drop-in and pick-up rental equipment will be available.

**WE ARE  
OPEN!**

**WELCOME BACK**

WE ARE DELIGHTED TO BE  
BACK **SERVING YOU** AND  
**STAYING SAFE TOGETHER**



**MINUTES OF CLEAR HILLS COUNTY  
SPECIAL COUNCIL MEETING  
CLEAR HILLS COUNTY COUNCIL CHAMBERS  
FRIDAY, MAY 8, 2020**

<b>PRESENT</b>	Miron Croy Raymond Wetmore Jason Ruecker David Janzen Peter Frixel Amber Bean	Reeve Councillor Councillor Councillor Councillor Deputy Reeve
<b>ABSENT</b>	Dan Fletcher	Councillor
<b>ATTENDING</b>	Allan Rowe Audrey Bjorklund	Chief Administrative Officer (CAO) Community Development Manager (CDM)
<b>CALL TO ORDER</b>	Reeve Croy called the meeting to order at 9:30 a.m.	
<b><u>ACCEPTANCE OF AGENDA</u></b> <b>C226-20(05-08-20)</b>	<b>RESOLUTION</b> by Councillor Janzen to adopt the agenda governing May 8, 2020, Special Council Meeting as presented. <b>CARRIED.</b>	
<b><u>APPROVAL OF MINUTES</u></b> Previous Meeting Minutes		
<b>C227-20(05-08-20)</b>	<b>RESOLUTION</b> by Councillor Wetmore to adopt the minutes of the April 21, 2020 Special Council Meeting as presented. <b>CARRIED.</b>	
<b><u>NEW BUSINESS: COUNCIL</u></b> Paving – Worsley School Parking Lot	Council is presented with a cost estimate for paving the Worsley School Parking Lot.	
<b>C228-20(05-08-20)</b>	<b>RESOLUTION</b> by Reeve Croy to offer the Peace River School Division No. 10 a conditional grant of up to \$199,000.00 (one hundred ninety nine thousand dollars) to pave the Worsley School parking lot bus pickup/drop off area in 2020, with the funds to be allocated from the Rate Stabilization Reserve. <b>CARRIED.</b>	
<b><u>CLOSED MEETING ITEM(S)</u></b> Land	Council discussed one closed meeting item	
<b>C229-20(05-08-20)</b>	<b>RESOLUTION</b> by Councillor Frixel that Council close the meeting to the public as per Section 27, of FOIP at 9:49 a.m. <b>CARRIED.</b>	

Page 2 of 2  
SPECIAL COUNCIL MEETING  
Friday May 8, 2020

**C230-20(05-08-20)** **RESOLUTION** by Reeve Croy that Council open the meeting to the public at 10:13 a.m. **CARRIED.**

**C231-20(05-08-20)** **RESOLUTION** by Councillor Wetmore that Council approves the proposal for a new lot development in the hamlet of Worsley and direct administration to prepare a developer land purchase agreement in the amount of \$2,500.00 (two thousand five hundred dollars) per acre plus all related land title registration, surveying, utility installation and all other incremental and incidental costs to be the responsibility of the Developer. **CARRIED.**

ADJOURNMENT

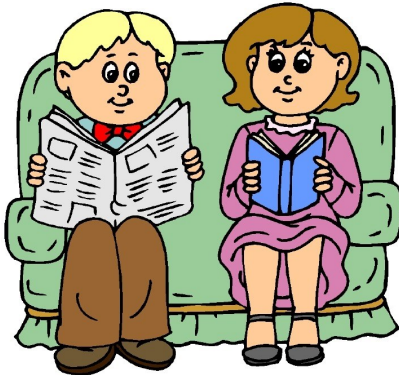
Reeve Croy adjourned the May 8, 2020 Special Council Meeting at 10:19 a.m.

\_\_\_\_\_  
DATE

\_\_\_\_\_  
REEVE

\_\_\_\_\_  
DATE

\_\_\_\_\_  
CHIEF ADMINISTRATIVE OFFICER



## We Welcome your Feedback!

You can contact us with questions or comments at [info@clearhillscounty.ab.ca](mailto:info@clearhillscounty.ab.ca)

Clear Hills County newsletter is a free publication available to ratepayers. Current issues of the newsletter are available free of charge at the County office or can be viewed online at [www.clearhillscounty.ab.ca](http://www.clearhillscounty.ab.ca)

Deadline for June submissions is June 15, 2020.

*We are happy to list festivals, fairs, fundraisers, reunion's and other community events.*

# Meet the Weed Inspectors!

Alberta is extremely susceptible to invasive species. Some species are looking to get a good hold on our waterways and others are looking to invade our productive agricultural land. For this reason, the *Weed Control Act*, proclaimed in 1907 has existed in some form for more than 100 years, making it Alberta's oldest piece of legislation. Its latest version (proclaimed in June 2010) listed 46 Prohibited Noxious and 29 Noxious

weeds requiring either eradication in the case of Prohibited Noxious or control in the case of Noxious. The revisions showed an increased focus on new plants, that most had assumed weren't even in Alberta yet.

To assist landowners/occupants to identify and develop control of these legislated weeds, Clear Hills County appoints Weed

Inspectors annually. One of their goals is to create awareness about these new invasive weeds and why they must be controlled or eradicated.



## 2020 Weed Inspectors



**Cindy Campbell**



**Crystal Dei**



**Roxanne Lefebvre**

## Weed Report vs. Weed Notice

Should a Weed Inspector discover a noxious weed, they will write up a Weed Report and inform the landowner of the weed infestation. This is not a Weed Notice. A Weed Report is offered as an informational tool to encourage landowners to control the weeds in question or to contact the Agricultural Services Department to learn more about plant management.

A Weed Notice, on the other

hand, is a legal document under the Alberta Weed Control Act. A Notice will be issued if a landowner has repeatedly failed to control the weeds identified in the Weed Report.

A Weed Notice is a document that, if not complied with, will lead Clear Hills County taking control/eradicating the weeds in question with the landowner still responsible for the costs of the control.

Under the Act, Weed Inspections, "may enter at any reasonable hour on land premises, and inspect the land or any crops, hay, etc., on the premises."

For more information contact Greg Coon, Agricultural Fieldman at 780-685-3925 or email [greg@clearhillscounty.ab.ca](mailto:greg@clearhillscounty.ab.ca).

## Mowing for Community Organizations

Once again, the County will offer to mow outfields and large grassed areas once annually in conjunction with the roadside mowing program.

Organizations requesting the service will be required to complete and submit a Waiver Agreement.

For details of the Community Mowing Program contact the Public Works Department at the County office 780-685-3925.



### Tree salt tolerant species

Planting trees along roads and driveways requires an additional consideration due to potential salt damages and injuries that will occur during their lifetime. Trees affected by salt will have a stunned appearance and reduce growth as well as many will succumb due to higher doses of salt in soil or on trees themselves. It is very important to plan ahead and plant trees that are best suited to handle higher amounts of salt that they can be exposed to. You must understand biology, growth, and site requirements for each species planted along roads or driveways.

It is crucial to plant more salt tolerant species along roads and driveways as they will protect less salt tolerant species from salt damages. Less winter hardy plants are more susceptible to salt injuries. If you plant trees along very busy roads start with salt tolerant shrubs as a first line of defence; following salt tolerant trees and further away the trees that are at least salt tolerant. Little planning ahead will save you a lot of headache down the road and will allow you to have a long lasting shelterbelt/trees around your property.

It is important to keep in mind that all species of plants, shrubs and trees are affected by salt; some are able to tolerate greater salt levels than others but it will still affect them. There is NO tree or shrub suitable for high and extremely high saline soils or in an area where annual road de-icing or dust control will accumulate high levels of salt in soil. Some of these trees and shrub species can be very invasive and it is crucial to check with local authorities if you are allowed to plant some of very invasive shrubs and trees on your property. Trees and shrubs rated to salt tolerance as high, medium and low:

**High salt tolerance:** Silver buffalo berry and Sea buckthorn Russian olive, Rocky Mountain juniper and Austrian pine

**Medium salt tolerance:** Caragana, Spreading juniper, Snowberry, Villosa lilac, Hawthorn, Chokecherry, Mountain Ash, Ponderosa pine, Green ash, Manitoba maple, Siberian elms, Laurel leaf willow, and some apples

**Low salt tolerance:** Raspberry, Rose, Dogwood, winged euonymus, Spirea, Colorado blue spruce, Douglas fir, balsam fir, Cottonwood, Aspen, Birch, Little-leaved linden and Larch



# Tree Pruning

For beginners doing pruning in their yards.

For any large pruning please contact professional certified arborist.

## When to prune?

- **Coniferous trees**, like spruce or pine, can be pruned any time of year. For most trees, the best is time from March to mid-April or during the winter
- **Birch and Maple** – prune **ONLY** during the growing season – June and July – leaves must be fully developed
- **Elm trees** – DO NOT prune from April 1 till October 1
- **Hardwood trees**, like aspen or ash, **and shrubs without showy flowers**, prune in the dormant season
  - to easily visualize the structure of the tree,
  - to maximize wound closure in the growing season after pruning,
  - to reduce the chance of transmitting disease, and
  - to discourage excessive sap flow from wounds

## Why prune trees?

- To remove “**3D**- **D**ead, **D**iseased or storm-**D**amaged” branches
- To thin the crown to permit new growth and better air circulation
- To reduce the height of a tree or to remove obstructing lower branches
- To shape a tree for design purposes
- To reduce potential fire hazards
- To encourage flowering, to promote fruit production
- To address safety issues for people or property

## How much to prune?

- Every time you prune a tree, it stresses the tree and increases vulnerability
- Pruning increases the opportunity for insects and diseases to invade trees
- Generally speaking, prune no more than 25 % of living branches
- The amount of live tissue that should be removed depends on the tree size, species, and age, as well as the pruning objectives



## Basic principles of pruning

- Visualize the shape of the plant at maturity – how the tree will look like after pruning
- Remove dead, damaged and diseased wood
- Select the key branches or main stems that you want to keep
- Remove weak crotches, crossed branches, suckers and watersprouts (new branches growing near bottom of the tree)
- Cut back to branch collar to leave the smallest wound possible
- Remember that more is not always better – you can always prune next year



## Pruning techniques

- **Cleaning** is the removal of dead, dying, diseased, crowded, weakly attached, and low-vigor branches from the crown of a tree.
- **Crown Thinning** is the selective removal of branches to increase light penetration and air movement through the crown (the branches and leaves extending from the trunk or main stems). Thinning opens the foliage of a tree, reduces weight on heavy limbs, and helps retain the tree's natural shape.
- **Raising** removes the lower branches from a tree in order to provide clearance for buildings, vehicles, pedestrians, and vistas.
- **Reduction** reduces the size of a tree, often for clearance for utility lines.



## Pruning Tools

- Keep pruning equipment (pruning shears, loppers, saws, etc.) sharp and clean.
- You get what you pay for, so cheaper tools...usually are !!!!
- Before you cut, dip your pruner for a few seconds in bleach.
- After pruning, put the tools under running water for 10 minutes and thoroughly dry.
- Dry tools after clean up – don't let them rust.
- Clean up tools after you finish your work.
- Buy only the tools that you really need - pruners, rounding saw, loopers, sheers, secateurs

## Pruning Shrubs

- Shrubs that bloom **before June 20** should be pruned immediately after the bloom period.
- Shrubs that bloom **after June 20** should be pruned in the dormant season or just before growth in spring.
- Not all shrubs need to be pruned, not every year and not severely.
- Many flowering trees/shrubs (eg crabapple, hawthorn, pin cherry, chokecherry, etc) are susceptible to fire blight and black knot fungus, and pruning can spread these diseases.

## Pruning Roses

- In the wild, roses produce strong new shoots from near the base of the plant each season.
- Prune during the winter – March/April just before the season starts.
- Deadhead during the summer – prune back to a five leaflet leaf.
- Cut above an outward pointing bud to encourage an open center.
- Cut back into healthy wood.
- Cut any diseased or damaged branch.
- Remove all thin, weak canes that are smaller in diameter than a pencil.



## SAFETY IN PRUNING

- Get pruning safety training, available at many arborists.
- Have an emergency plan in place in case an incident occurs.
- Wear eye protection at all times.
- Wear a hard hat and steel toed boots.
- Wear leather or other appropriate gloves.
- Do not use axes or hatchets—use proper pruning equipment.
- If you use power tools, please follow their safety procedures.
- For beginners, do not climb trees.
- Before trimming a tree, inspect the area to identify possible hazards (e.g. presence of power lines, broken or cracked limbs after a severe storm) and take appropriate actions to prevent injuries or accidents.
- Do not prune under power lines
- Do not use dead branches for support.
- Do not leave partially sawn limbs on trees.

## Myths about Pruning (and the truth)

1. Pruning is difficult – *pruning is not complicated, but it is hard work*
2. Plants will die if they are pruned wrong time of year - *not true*
3. All pruning must be done during the winter - *with a few exceptions, you can prune year-round*
4. Removing and pruning trees is a crime against nature - *not true*
5. Most trees need pruning - *this is not true, unless there is a valid reason to prune a tree*
6. Hedge shears are all you need to prune shrubs - *shrubs require more than hedge shears, they require proper pruning*
7. Anybody with a pick-up truck, chainsaw, and pruners is an expert - *use people with knowledge and expertise in this area*
8. All cuts must be treated with paint - *not true*

# Tree Planting Tips

Once you have decided what tree and shrub species you would like to plant and have done proper planning, design and site preparation, it is time to start planting. There are several steps involved:



## Purchase of seedlings –

you can either buy large amounts of tree seedlings from large forestry type tree nurseries or small tree nursery outfits that sell small seedlings. If you have a few trees to plant you can choose a local tree nursery or a retail store. The key thing in purchasing is to ask where the stock came from, as many trees are not adapted to Alberta's harsher climate. Get your order in promptly as some suppliers may run out of the trees and shrub species that you want. If you don't get a tree that suits your needs, wait for next season and order in advance.



## Transport tree and shrubs from nursery to your home –

Do not leave seedlings for long time in your vehicle during hot and windy days as their roots dry rapidly. Do not expose them to direct sunlight - cover them or put them in a box. If you must wait one or two hours, cover the seedlings with snow or ice or use a reflective tarp. Do NOT use canvas, as it holds heat and warms seedlings. Having canopy on your pick-up truck also helps.



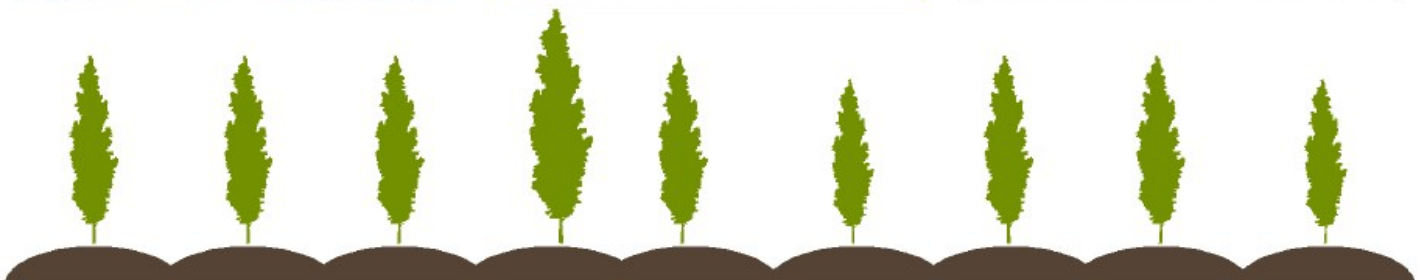
## Handling trees and shrubs at your home or site –

The best method is to plant your trees and shrubs within few days of arrival to your home – don't wait too long as you may expose them to various diseases, moulding, drying, and many other problems. If you can't plant them immediately, store them in a cool place for few days (a cooler or cold storage, root cellar or colder corner of your shed). After a few days, check the roots - if they are dry, spray mist water and cover them again. Don't let your seedlings freeze.



## Seedlings to planting site –

Take only the amount of seedlings that you can plant for the day. Keep them cool and moist, in the shade or under a cover and not exposed to wind or direct sunlight. If they are getting dried out sprinkle them with water to keep them moist. You can also dip seedlings in water just prior to planting but DO NOT keep them in water for long as you can drown them and cause damage due to oxygen starvation. Poplar and willow cuttings can be soaked in water a day prior to planting.



## Planting –

The best time to plant trees or shrubs is early morning, late afternoon or during a cloudy day. Do not plant trees during the hot noon or afternoon as they will dry up very quickly. There are two common methods of planting, either manual or mechanical tree planting. Each of these methods has advantages and disadvantages.

- For hand planting don't pull the tree out until you have made a hole. Create the hole large enough to keep roots straight. Trees should be planted in the same depth as they were planted in the nursery. You may notice changes in colour of the seedlings' bark close to roots. You will see the soil line - that is the depth that you need to plant the trees. Once you have put the tree properly in the hole, put soil around it and step on the soil to make it firm. The easiest way to test is to try to gently to pull the trees out – if they come out easily, you have not used enough soil and pressure. Keep seedlings as straight as possible.
- For mechanical planting have the soil prepared prior to planting. Regulate the speed of planting by adjusting the speed of the tractor and planter to the time needed for proper planting and spacing. You will need to have somebody go after tree planter, make the soil firm around trees and ensure that trees are properly planted.



Picture: Properly planted and weed controlled shelterbelt ( Photo Toso Bozic )

## Watering –

water immediately after planting. Watering can be done with drip irrigation or leaving a small bucket with holes next to the trees. Do not water too quickly as water will run off and nothing will get to the roots, or it will create surface roots for trees that may die during a drought. The goal is to create trees and shrubs with deep roots that can withstand drought. Check soil moisture regularly by putting a sharp object such as a knife into the soil. Do not water if there is some soil on the knife. If the knife comes out dry, you may water.

## Weed Control –

is an ongoing process in first few years following planting. There are several methods of weed control including mechanical weed control, herbicides and using various mulches. In any case, without proper weed control you have a greater chance for your trees to die. It may require up to five years to control weeds until the tree can stand itself.

## Insect, diseases and animals –

it is crucial in the first few years to monitor your trees once a week for any potential damages for insects, diseases and animals.

Planting trees is a fun activity but also very hard work. Involve friends and family members in planting and look forward to a beautiful reward for your hard work in your yard or future forest.



## ROADSIDE SPRAYING

**Attention  
Clear Hills County  
Residents/Ratepayers**

The Agricultural Service Board of Clear Hills County will be carrying out a roadside spraying program for weed & brush control during the months of May through September. The spraying will be conducted by Agricultural Service Board staff and/or by private contractor hired by the Agricultural Service Board.

Spraying will not occur adjacent to yard sites, or known herbicide sensitive vegetation (i.e. gardens, shelterbelts) or within the legislated setbacks from water bodies and water sources.

Persons who do not want their roadside sprayed adjacent to their property must complete and sign the attached form below, and return it to the County Office in Worsley **by June 22, 2020**. No telephone requests will be accepted.

Upon requesting no spraying, the landowner shall be responsible for weed and brush control within the road allowance adjacent to his or her property for the year as signed. In addition, upon the completed form being received by the office, signs will be mailed and those persons will be responsible for posting them where roadside spraying is not wanted.

This request is for **one year** duration only.

✂ ..... ✂ ..... ✂ ..... ✂ ..... ✂ ..... ✂ ..... ✂ ..... ✂ ..... ✂ ..... ✂ ..... ✂ .....

To: Clear Hills County  
Box 240  
WORSLEY, Alberta  
T0H 3W0

- ✓ I do not wish the road allowance adjacent to my property(ies), as described below, sprayed during the 2020 season,
- ✓ I accept the full responsibility of weed and brush control within the road allowance for the 2020 season, and all costs associated with the control, if control is warranted by Clear Hills County.

Name \_\_\_\_\_

Address

Telephone

Land Location(s):    Qtr.                      Sec.                      TWP                      Range                      W6M

\_\_\_\_\_

\_\_\_\_\_

\_\_\_\_\_

(Landowner/Renter) \_\_\_\_\_ Signature: \_\_\_\_\_

Witness \_\_\_\_\_ Signature: \_\_\_\_\_

# Wildfire Hazard and Updates

Want to keep track of the current wildfire situation in the area, and Alberta?

This is the link to the province wildfire updates that are being released regularly by Wildfire Branch:

<http://srd.web.alberta.ca/peace-river-area-update>

There is an option to subscribe to the updates (at the bottom of the webpage) so the notifications come directly to your email.

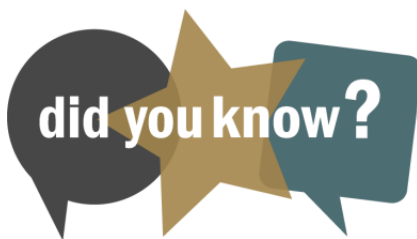
Wildfire updates can also be accessed at <https://wildfire.alberta.ca/>



## Agricultural Burning

Crop burning should be used as a final management option for unharvested crops. Consider bailing, removing the bales from the field and burning them later away from the field.

Should you decide to burn, you will need a fire permit if you are within the Forest Protection Area. Call 780-624-6190 for more information on how to obtain your free permit. If you are burning where a permit is not required contact the County office at 780-685-3925 with details to prevent unnecessary response from the fire department.



### Forest Protection Area of Alberta

Alberta's Forest Protection Area (FPA) covers approximately 60 per cent of the province's landmass. The province is responsible in Alberta for managing wildfires in this area. Wildfire protection in Alberta is shared between Alberta Wildfire (inside the FPA) and the municipalities and counties outside the FPA.

### Summer Driveway Grading

#### Program

Clear Hills County provides Summer Driveway Grading for senior citizens, once per season, during the summer months.

Once signed up, you must contact the County to request the service.

To qualify you must be at least 65 years of age or over, sign a waiver and provide proof of age.

For more information contact the County at 780-685-3925.



Contact the County's Development Officer should require assistance in completing a Development Permit Application.

*If you have questions about the Land Use Bylaw regulations and how they apply to your development contact the Development Officer at 780-685-3925*

#### *Additional Permits*

In addition to a Development Permit, you may also require:

- ⇒ Building Permit
- ⇒ Gas Permit
- ⇒ Electrical Permit
- ⇒ Plumbing Permit
- ⇒ Private Sewage Treatment System

For further information on these permits or regulatory information, contact one of the agencies authorized by Alberta Municipal Affairs to issue these permits at <http://www.municipalaffairs.alberta.ca/permits>

# Do you need a Development Permit?

Development permits are required in Clear Hills County pursuant to the Clear Hills County Land Use Bylaw. A development permit ensures that the proposed use of the land does not conflict with surrounding uses and that the proposed development is set back the appropriate distances from the property lines and the roadways, located in a safe location (not too close to water bodies or oil and gas facilities).

When you are planning to construct a new building, structurally renovate an existing building, or change the use (or intensity of use) of your property, you will need a Development Permit.

*All Development located within 0.8km of a Provincial Highway requires a Roadside Development Permit from Alberta Transportation.  
For more information contact 780-427-2731.*

## Development Permit Application

Development Permit Applications forms are available at the County office or on the County website ([www.clearhillscounty.ab.ca](http://www.clearhillscounty.ab.ca)). There is no charge for agricultural, residential and commercial development penalty should you develop without an approved Development Permit. Industrial applications are \$100 for every \$100,000 of development.

For Development applications, the following information is required but not limited to:

- ⇒ Property owners signature
- ⇒ Development type, start date, completion date and construction costs
- ⇒ Site Plan
- ⇒ Floor Plan
- ⇒ Signed right of entry form

## Development continued...

The Clear Hills County Land Use Bylaw also details development NOT requiring a permit. A few common ones are:

- ⇒ Any farm use building, shed, dugout (located at least 40.8m/134 feet from the road right-of-way or minor accessory use must otherwise conform to the provisions of the Land Use Bylaw.
- ⇒ Minor repair or maintenance to a building (providing there are no structural changes)
- ⇒ The construction or repair of a fence that is less than 1 meter (3 feet) in height in front yards and 2 meters (6 feet) in height in rear and side yards.
- ⇒ Decks (provided they have no walls or roof and are less than .6 meters (2 feet) from the ground level.
- ⇒ Accessory buildings (shed etc.) under 9.29<sup>2</sup> (100m<sup>2</sup>) that do not have a foundation.



# Celebrating July 1st Canada Day

On July 1, 1867, the British North America Act created the Dominion of Canada as a federation of four provinces. This event is known as the Confederation of Canada. The four original provinces were created from the former British colonies of Nova Scotia, New Brunswick and the Province of Canada, which was divided into the provinces of Quebec and Ontario. Canada's boundaries have been extended since 1867, the country now consists of 10 provinces and 3 territories.

On June 10, 1868, Canada's Governor General proclaimed Canadians should celebrate the anniversary of the confederation. July 1 became a statutory holiday, known as Dominion Day, in 1879. However, no official celebrations were held until the 50th anniversary in 1917 and the 60th anniversary in 1927. After World War II, Dominion Day was celebrated more frequently and more events were organized by the national government. After the centenary of confederation in 1967,

Dominion Day events became more widespread. July 1 became popularly known as Canada Day. The date was officially known as Canada Day from 1983 onwards.



## Seniors' Week June 1-7, 2020

Seniors are a valuable part of our province. Alberta is home to nearly 470,000 seniors. As the number of older adults continues to grow, so do our opportunities to spend time with the seniors in our lives, whether they be family members, friends or members of your community.

People over 65 play a number of important roles, such as caregivers,

volunteers, mentors, business owners and employees. Seniors make significant contributions to their families and communities, and are an important source of knowledge, history and a key link between our past and future.

Seniors' Week is a great time to acknowledge and appreciate seniors. It is a wonderful opportunity to spend some time

with the seniors in your life.

Grandparents, parents, friends, neighbors—we all know and love seniors in our lives. Seniors' Week is a chance for us to celebrate and recognize their contributions and show them that their involvement to our communities benefits Albertans of all ages.



**Does your organization need money?**

**The Hines Creek & District Recreation Board is now accepting grant applications to help you with Recreational and Cultural Projects.**

**Due to our Municipal Office being closed to COVID-19. Applications are online at [www.hinescreek.com](http://www.hinescreek.com) or contact the office to receive an application through the mail, email, or fax.**

**For more information contact the office at 780-494-3690 or email [executiveassistant@hinescreek.com](mailto:executiveassistant@hinescreek.com).**

**Deadline for applications is June 15, 2020**

June 1–7, 2020

# Seniors' Week



For ideas on how to recognize and celebrate seniors while keeping everyone safe, visit:  
<https://www.alberta.ca/seniors-week.aspx>

Share your stories and videos using #abseniors

Alberta 

# INVITATION TO TENDER

# Haying



**The Alberta Conservation Association is accepting tenders to harvest tame hay on the following properties:**

## Montagneuse Uplands

Northeast quarter of Section 28 and Southeast quarter of 29, Township 083, Range 06, West of the 6th Meridian (Approximately 96 acres)

## Reiner Homestead

Northwest quarter of Section 9 and Southwest quarter of Section 16, Township 083, Range 05, West of the 6th Meridian (Approximately 107 acres)

Tenders will be accepted as *dollars per acre only* until noon **Thursday, June 25, 2020**. A **25% deposit** in the form of a money order or certified cheque must accompany the tender and be payable to Alberta Conservation Association. Full payment is required by the successful bidder before harvesting (cutting) the hay.

The hay will be **cut and baled** between July 15th and August 15th, 2020 and the bales **must be removed** before September 15th, 2020. The successful bidder will forfeit the deposit upon refusal to do the haying.

**Please Note:** The highest bid or any bid is not necessarily accepted. Please mark **Haying Tender** and the **Property Name** on the envelope.

**Tender forms may be obtained from the following:**

### Alberta Conservation Association

Jon Van Dijk  
Northwest Business Unit  
9001-94 Street  
Peace River, Alberta T8S 1G9  
Cell: 780-618-3550  
Fax: 780-624-1278

or

### Alberta Conservation Association

Garret McKen  
Northwest Business Unit  
9001-94 Street  
Peace River, Alberta T8S 1G9  
Cell: 780-219-2077

or

### Alberta Environment and Parks

Danielle Gabruck  
Public Lands Division  
Box 819, Provincial Building  
10209-109 Street  
Fairview, Alberta T0H 1L0  
Phone: 780-835-7200  
Fax: 780-835-3233

*Alberta Conservation Association (ACA) is a non-profit, non-government association.  
Our Mission: ACA conserves, protects, and enhances wildlife and fish populations  
and their habitats for Albertans to enjoy, value, and use.*

# PSYCHOLOGICAL FIRST AID - AFTER A PANDEMIC, DISASTER OR EMERGENCY

MAY 11, 2020 1:00 PM - 3:00 PM

MAY 20, 2020 9:00 AM - 11:00 AM

JUNE 10, 2020 10:00 AM - 12:00 PM

JUNE 19, 2020 9:00 AM - 11:00 AM

MICROSOFT TEAMS - ONLINE

**Psychological First Aid (PFA) is a way of people helping people immediately after a disaster or emergency. PFA providers give practical support in a way that respects the person's dignity, culture, and abilities. PFA involves offering practical support, listening to and comforting people, and connecting them to information, community services, and social supports.**

**Cost: FREE**

**Open to public, register at :**

**[register.rockyview.ab.ca/public/](https://register.rockyview.ab.ca/public/)**

## Clear Hills County Rental Equipment

EQUIPMENT	DEPOSIT	AG RATE	COMMERCIAL RATE	COMMUNITY RATE
<b>BBQ (NEW)</b>	\$100.00	\$50.00	\$100.00	No Charge 2 days
<b>Chem Wipe Applicators-</b>				
Quad Mount (rope wick)	\$50.00	No charge	No Charge	No Charge 2 days
Hand Held (rope wick)	\$50.00	No charge	No Charge	No Charge 2 Days
Push/Pull Roller Applicator	\$50.00	No charge	No Charge	No Charge 2 Days
Rotowiper (3)	\$50.00	No charge	No Charge	No Charge 2 days
Community Centre	\$50.00	\$50.00	\$100.00	No Charge 2 days
Corral Panels	\$50.00	\$50.00	\$100.00	No Charge 2 days
Eco Bran Applicator	\$50.00	\$50.00	\$100.00	No Charge 2 days
<b>Extra Hose</b>	\$50.00 (if rented by itself)	\$1.00	\$5.00	\$1.00
Grain Bag Extractor	\$350.00	\$350.00	\$700.00	No charge 2 days
Grain Bag Roller	\$50.00	No charge	No Charge	No Charge 2 days
Grain Bagger & truck unloader.	\$350.00	\$350.00	\$700.00	No Charge 2 days
Grain Vac	\$400.00	\$200.00	\$400.00	No Charge 2 days
Grills	\$50.00	\$5.00	\$25.00	No Charge 2 days
Land Leveller	\$260.00	\$130.00	\$130.00	No Charge 2 days
Loading Chute	\$50.00	\$25.00	\$50.00	No Charge 2 days
Manure Spreader	\$300.00	\$150.00	\$300.00	No Charge 2 days
Mulch Applicator	\$50.00	\$25.00	\$50.00	No Charge
Post Pounder	\$250.00	\$125.00	\$250.00	No charge 2 days
Rock Picker	\$600.00	\$300.00	\$600.00	No Charge 2 Days
Rock Rake	\$600.00	\$300.00	\$600.00	No Charge 2 Days
Roller Mill	\$50.00	\$20.00	\$40.00	No Charge 2 Days
Bale Spear Scale	\$100.00	\$30.00	\$150.00	No Charge 2 days
Scare Cannon	\$50.00	No Charge	\$50.00	No Charge
"SMOKE" Signs	\$60.00	No Charge	No Charge	No Charge
<b>Sprayers</b>				
Backpack	\$50.00	No Charge	No Charge	No Charge
Quad Mounted	\$50.00	No Charge	\$50.00	No Charge 2 days
Quad Pull Type	\$50.00	No Charge	\$50.00	No Charge 2 days
Skidmount (3)	\$50.00	No Charge	\$50.00	No Charge 2 days
Truck Mount	\$200.00	No charge	No Charge	No Charge 2 days
Sickle Mower	\$100.00	\$50.00	\$100.00	No Charge 2 days
Steam Table	\$50.00	\$5.00	\$25.00	No Charge 2 days
Tables & Chairs	\$50.00	\$1.00/table& \$.50/Chair	\$1.00/table& \$.50/Chair	No Charge 2 days
Toilets	\$100.00	\$40.00	\$100.00	No Charge 2 days
Tree Spade	\$300.00	\$50.00	\$300.00	No Charge 2 days
Wash Station	\$50.00	\$10.00	\$25.00	No Charge 2 days
<b>Water Pump</b>				
Summer (April - Sept)	\$100.00	\$75.00	\$300.00	No Charge 2 days
Winter (Oct - March)	\$1,000.00	\$200.00	\$500.00	No Charge 2 days
Wire Roller	\$50.00	\$25.00	\$50.00	No Charge 2 days

# Ditching.

## Working safely around our facilities

To ensure our pipelines and facilities operate safely, written consent from TC Energy must be obtained in Canada before any of the following:

- Constructing or installing a facility across, on, along or under a TC Energy pipeline right-of-way.
- Conducting ground disturbance (excavation or digging) on or within the prescribed area (30 metres or 100 feet from the centreline of the pipeline).
- Driving a vehicle, mobile equipment or machinery across a TC Energy pipeline right-of-way outside the travelled portion of a highway or public road.
- Using any explosives within 300 metres or 1,000 feet of TC Energy's pipeline right-of-way.



Click  
Before  
You Dig.com

### Before ditching:

Make a locate request either online ([www.clickbeforeyoudig.com](http://www.clickbeforeyoudig.com)), via mobile apps (Saskatchewan and Quebec) or via phone. The One-Call centre will notify owners of buried utilities in your area, who will send representatives to make these facilities with flags, paint or other marks, helping you avoid damaging them.

Apply for written consent using TC Energy's new online application form ([writtenconsent.transcanada.com](http://writtenconsent.transcanada.com) or call 1-877-872-5177). Often written consent for minor activities can be obtained directly from a regional TC Energy representative through a locate request.

### What is the prescribed area?

The prescribed area extends 30 metres on either side of the pipeline centreline. Ground disturbance within this zone requires written consent. Contact your local One-Call centre to request a locate and TC Energy will come to the site and mark the pipeline. The existence of the prescribed area does not necessarily mean development of the land cannot occur within the prescribed area.

## Important contact information

### One-Call centres

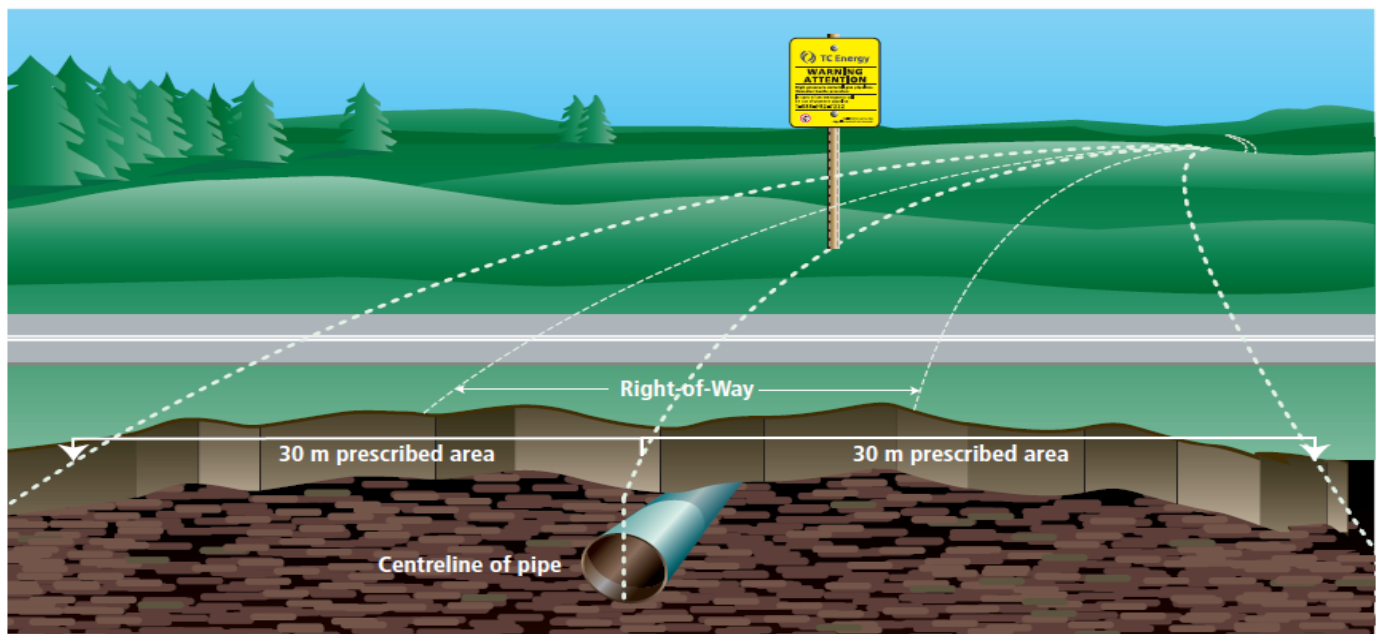
Online locate requests . . . . .	<a href="http://www.clickbeforeyoudig.com">www.clickbeforeyoudig.com</a>
British Columbia . . . . .	1-800-474-6886
Alberta . . . . .	1-800-242-3447
Saskatchewan . . . . .	1-866-828-4888
Manitoba . . . . .	1-800-940-3447
Ontario . . . . .	1-800-400-2255
Quebec . . . . .	1-800-663-9228

### Written consent

Online application . . . . .	<a href="http://writtenconsent.transcanada.com">writtenconsent.transcanada.com</a>
Phone . . . . .	1-877-872-5177
Email . . . . .	<a href="mailto:crossings@transcanada.com">crossings@transcanada.com</a>
Quebec email . . . . .	<a href="mailto:quebec_crossings@transcanada.com">quebec_crossings@transcanada.com</a>

### General inquiries

Land . . . . .	1-866-372-1601
Public awareness . . . . .	1-855-458-6715
Emergency . . . . .	1-888-982-7222





## 2020 Biggest Vegetable Contest

### Contest categories:

Beets	Carrots	Corn
Onions	Potatoes	Pumpkins
Tomatoes	Turnip	Zucchini
Other Squash	Most Unique	Cabbage

**2 entry groups:** Adults 13 & over

Kids: 12 & under

**First Place: \$50 each group & category**

The Biggest Vegetable Contest weighing stations will be set up at each of the following locations over a one week period in September: Bear Canyon, Cleardale, David Thompson, Hines Creek & Worsley.

Winners will be announced at the end of the contest, and the pictures of winners with their entries will be published in the October County newsletter and the following April at the Agricultural Trade Show.

Worsley Health Centre

# JUNE

# 2020

Our hours are 9:00-12:00 closed from 12:00 to 1:00 1:00-4:00

Sunday	Monday	Tuesday	Wednesday	Thursday	Friday	Saturday
	1 Nurse Practitioner Clinic- call for appointment	2	3 Nurse Practitioner Clinic- call for appointment	4	5 Nurse Practitioner Clinic-call for appointment	6
7	8 Nurse Practitioner Clinic- call for appointment	9 <i>Immunization</i> Clinic- call for appointment	10 Nurse Practitioner Clinic- call for appointment	11 .	12 Nurse Practitioner Clinic-call for appointment	13
14	15 Nurse Practitioner Clinic- call for appointment	16	17 Nurse Practitioner Clinic- call for appointment	18	19 Nurse Practitioner Clinic- call for appointment	20
21	22 Nurse Practitioner Clinic-call for appointment	23 <i>Immunization</i> Clinic- call for appointment	24 Nurse Practitioner Clinic- call for appointment	25	26 Nurse Practitioner Clinic- call for appointment	27
28	29 Nurse Practitioner Clinic- call for appointment	30				

Please call the Health Centre to book Immunization, Tiny Teeth and Nurse Practitioner appointments

Please note: Doctors are no longer doing clinic's at the Worsley Health Centre.

Always call the Health Centre before coming: schedule is subject to change

Worsley Health Centre 780-685-3752

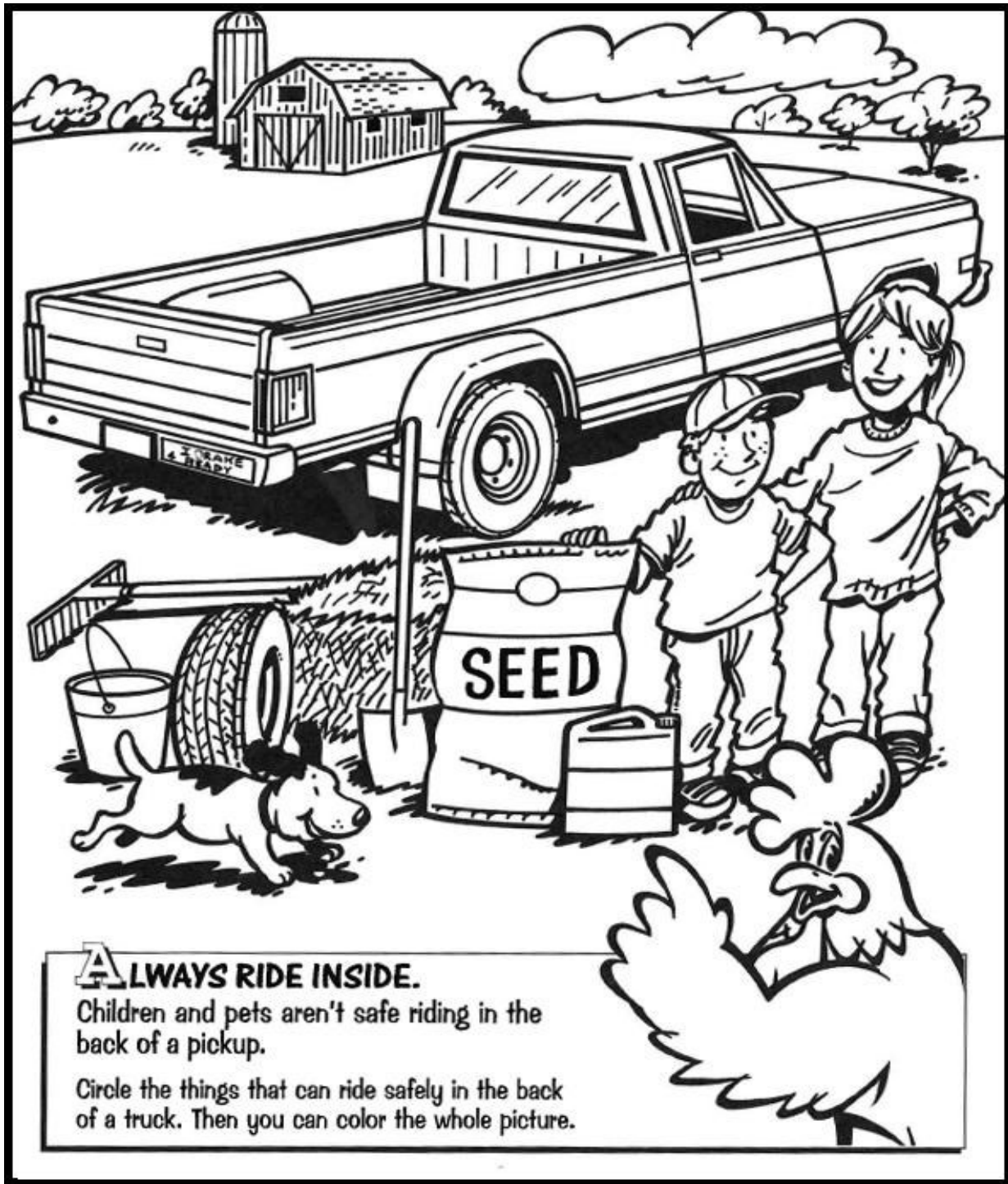
Fairview Medical Clinic 780-835-4255

Fairview Public Health 780-835-4951

Fairview Hospital 780-835-6100

**Emergency 911**

**Health Link 811**



Name: \_\_\_\_\_

Parent's Name: \_\_\_\_\_

Phone: \_\_\_\_\_

Mailing Address: \_\_\_\_\_

Category: \_\_Preschool \_\_K-1st grade \_\_2nd-3rd grade \_\_4th-5th grade \_\_6th grade &amp; over

Color the farm safety poster and mail to the Clear Hills County office by June 15th.

# Community Groups & Organizations, Facilities & Contacts

## Worsley & District Library

780-685-3842

[www.worsleylibrary.ab.ca](http://www.worsleylibrary.ab.ca)

Worsley & District Library, housed in Worsley Central School, offers library services to the public the following days:

Tuesday & Fridays

8:00 a.m.—4:00 p.m.

The library is also opened before school and at noon hour on Mondays, Wednesdays and Thursdays. Please call ahead to confirm that the library is open.

As this is a school, we ask that patrons check in at the school office prior to coming into the library.

Your opinion matters to us. If you have read a book that you found particularly interesting and would like to promote it, why not drop us a line and tell us the book title, author, and what was enjoyable about the book. Your comments will be included on our library webpage at the address [www.worsleycentralschool.ca/Library.php](http://www.worsleycentralschool.ca/Library.php) as well as on our Facebook page at

[www.facebook.com/worsleylibrary](http://www.facebook.com/worsleylibrary)

We gratefully accept donations of gently used books and magazines.

## Hines Creek Arts & Craft

### Meeting Room

To book the room call Gail at 780-494-3290 or 780-772-1155

## Hines Creek Senior's

### Drop in Rental

For bookings call: 780-835-1397 or 780-494-2333

## Hines Creek Municipal Library

Tuesday, Wednesday, & Thursday

10:00 am—6:00 pm

Located in the Village of Hines Creek office building.

780-494-3879

## Bear Point Community

### Library Hours

Monday through Thursday

10:00 am—3:00 pm

## Worsley Pioneer Club

### New Members Welcome

Cards Wednesday 1:00 p.m.—

4:00 p.m. at the Worsley

Pioneer Club Hall

For rental information call:

## Church Services

### Worsley Baptist Church

Sunday School - 10:00 am

Sunday Services - 11:00 am & 7:00 pm

Wednesday Night Service - 7:00 pm

### Cleardale Gospel Chapel

Sunday Service - 11:00 am

### Immaculate Heart of Mary Parish Catholic Church

Sunday Service 1:00 pm

### All Saints Ukrainian

### Catholic Church

every second Sunday 2:30 pm

### Lighthouse Fellowship

Sunday Service 11:00 am

Pastor Mike Ansley

### Mighty Peace Cowboy

### Church

Every 1st and 3rd Tuesday Service 7:00 p.m.

At the Eureka River Hall

Pastor Gary Henderson

## NOTE:

**Due to the current public gather restrictions and self distancing due to COVID-19, hours and availability of the facilities listed on this page may not be as advertised.**

# June 2020

Sun	Mon	Tue	Wed	Thu	Fri	Sat
	1	2	3	4	5	6
7	8	9 <i>Council Mtg. 9:30 a.m.</i>	10	11	12	13
14	15	16 <i>ASB Mtg. 10:00 a.m.</i>	17	18	19	20
21 <i>Father's Day</i>	22	23 <i>Council Mtg. 9:30 a.m.</i>	24	25	26	27
28	29	30				



Box 240  
Worsley, AB T0H 3W0  
Phone: 780-685-3925  
Fax: 780-685-3960  
Email:  
info@clearhillscounty.ab.ca

**Allan Rowe**  
Chief Administrative Officer  
allan@clearhillscounty.ab.ca

**Lori Jobson**  
Corporate Services Manager  
lori@clearhillscounty.ab.ca

**Ron Jensen**  
Public Works Manager  
ron@clearhillscounty.ab.ca

**Audrey Bjorklund**  
Community Development  
Manager  
audrey@clearhillscounty.ab.ca

## COUNCIL CONTACT INFORMATION

[council@clearhillscounty.ab.ca](mailto:council@clearhillscounty.ab.ca)

**Division #1— Miron Croy** Reeve  
Box 1315, Fairview, AB T0H 1L0  
Phone: 780-596-2187

**Division #2—Peter Frixel**  
Box 552, Hines Creek, AB T0H 2A0  
Phone: 780-494-2467

**Division #3— Amber Bean** Deputy Reeve  
Box 596, Hines Creek, AB T0H 2A0  
Phone: 780-834-8871

**Division #4—Jason Ruecker**

Box 205 Worsley, AB T0H 3W0  
Phone: 780-835-0398

**Division #5—David Janzen**  
Box 179 Cleardale, AB T0H 3Y0  
Phone: 780-834-0197

**Division #6—Dan Fletcher**  
Box 53, Cleardale, AB T0H 3Y0  
Phone: 780-685-3750 or 780-835-0658

**Division #7—Raymond Wetmore**  
Box 70, Cherry Point, AB T0H 0T0  
Phone/Fax: 780-595-2188

## Agricultural Service Board Members

Brian Harcourt—Chairperson  
780-494-2231

Baldur Ruecker — Deputy Chair  
780-685-2546

David Janzen —Councillor  
780-834-0197

Garry Candy—Member at Large  
780-494-2055

MacKay Ross—Member at Large  
780-835-0356

Julie Watchorn—Member at Large  
780-685-3035

## Fire Trailer Locations

**Bear Canyon**—Water Plant  
NW 22 83 12 W6M

**Cleardale**—Water Plant  
SW 11 85 10 W6M  
780-685-3670

**Clear Prairie**—Jim Evans  
SW 34 87 10 W6M  
780-685-2610

**Deerhill**—Ken Knoepfli  
NW 9 84 2 W6M  
780-596-2259

**Eureka River**—Lee Franklin  
NE 24 86 6 W6M  
780-834-6080

**Royce**—Melvin Worobetz  
SE 16 83 6 W6M  
780-494-3420

**Whitelaw**—Bill Wald  
SW 28 83 1 W6M  
780-596-2121

**Montagneuse Valley**  
Jim Stephenson yard  
SE 36 85 5 W6M  
Jim 780-494-2458

## County Transfer Site Hours—May 1st to September 30th

All Transfer Sites are closed on Sunday

Transfer Site	Monday	Tuesday	Wednesday	Thursday	Friday	Saturday
<b>Bear Canyon</b>	12:00 pm 8:00 pm	closed	closed	closed	closed	closed
<b>Clear Prairie</b>	closed	closed	closed	4:00 pm 8:00 pm	closed	closed
<b>Cleardale</b>	closed	11:00 am 3:00 pm	closed	closed	closed	12:00 pm 8:00 pm
<b>David Thompson</b>	closed	closed	closed	closed	12:00 pm 8:00 pm	closed
<b>Eureka River</b>	closed	closed	12:00 pm 8:00 pm	closed	closed	closed
<b>Hines Creek</b>	closed	closed	closed	closed	closed	8:00 am 5:00 pm
<b>Royce</b>	closed	closed	closed	12:00 pm 8:00 pm	closed	closed
<b>Whitelaw</b>	closed	closed	closed	closed	closed	12:00 pm 8:00 pm
<b>Worsley</b>	closed	4:00 pm 8:00 pm	closed	closed	12:00 pm 8:00 pm	closed